

## DOCKETED

<b>Docket Number:</b>	15-RETI-02
<b>Project Title:</b>	Renewable Energy Transmission Initiative 2.0
<b>TN #:</b>	211313
<b>Document Title:</b>	Presentation - Environmental and Land Use Technical Group - Progress Update by Scott Flint, 5-2-16
<b>Description:</b>	N/A
<b>Filer:</b>	Patty Paul
<b>Organization:</b>	California Energy Commission
<b>Submitter Role:</b>	Commission Staff
<b>Submission Date:</b>	4/29/2016 4:31:55 PM
<b>Docketed Date:</b>	4/29/2016

# Renewable Energy Transmission Initiative 2.0

---

## Environmental and Land Use Technical Group

### Progress Update

May 2, 2016



California Public  
Utilities Commission



California Energy  
Commission



California ISO

# Technical Group Contributions

## Environmental and Land Use Technical Group

---

- Identify, compile, document, and make available state-wide data (and west-wide to the extent feasible) relevant to renewable energy planning.
- Discuss, and recommend methodologies, to use the assembled data to assess areas and combinations of areas to evaluate environmental sensitivities and land use considerations.
- Work interactively with RETI Plenary Group to evaluate conceptual-level combinations of potential renewable energy generation areas, transmission and potential transmission corridors.



California Public  
Utilities Commission



California Energy  
Commission



California ISO

# Plenary Group Month-by-month Timeline

Month	Objectives
January	Explore planning goals (GHG, renewables, and system)
February	Gather renewable resource information, studies of potential 2030 value
March	Understand environmental, land use, and transmission constraints and opportunities; Recommend assessment approach
April	Gather/build conceptual resource combinations
May	Explore environmental and transmission implications
June	Discuss draft options and implications for renewables and transmission
July	Analyze options and implications for common or critical elements
August	Review and refine conclusions and recommendations
September	Release draft report

# Environmental and Land Use Technical Group

---

- Completed
  - Data Basin Gateway
  - Assemble statewide datasets
  - Identify focus data sets for reporting
  - Identify reporting format

# Environmental Datasets

---

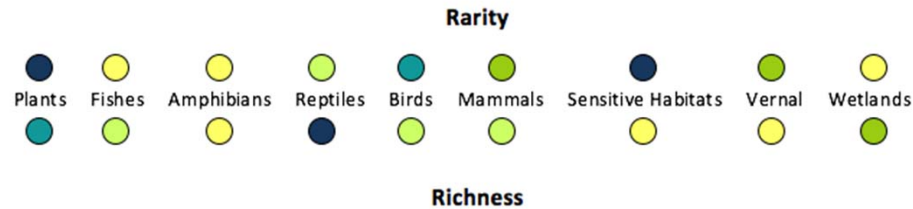
1. Protected Areas
2. Terrestrial Landscape Intactness
3. Federal Designated Critical Habitat
4. California Natural Diversity Database
5. Areas of Conservation Emphasis
6. Essential Habitat Connectivity Assessment
7. Important Bird Areas
8. Climate

# Environmental Profile Report

5. Areas of Conservation Emphasis (ACE II- California Department of Fish and Wildlife)  
<https://databasin.org/datasets/d5ae610954114029acae112386eee8c9>



Score values to be inserted in dot chart below

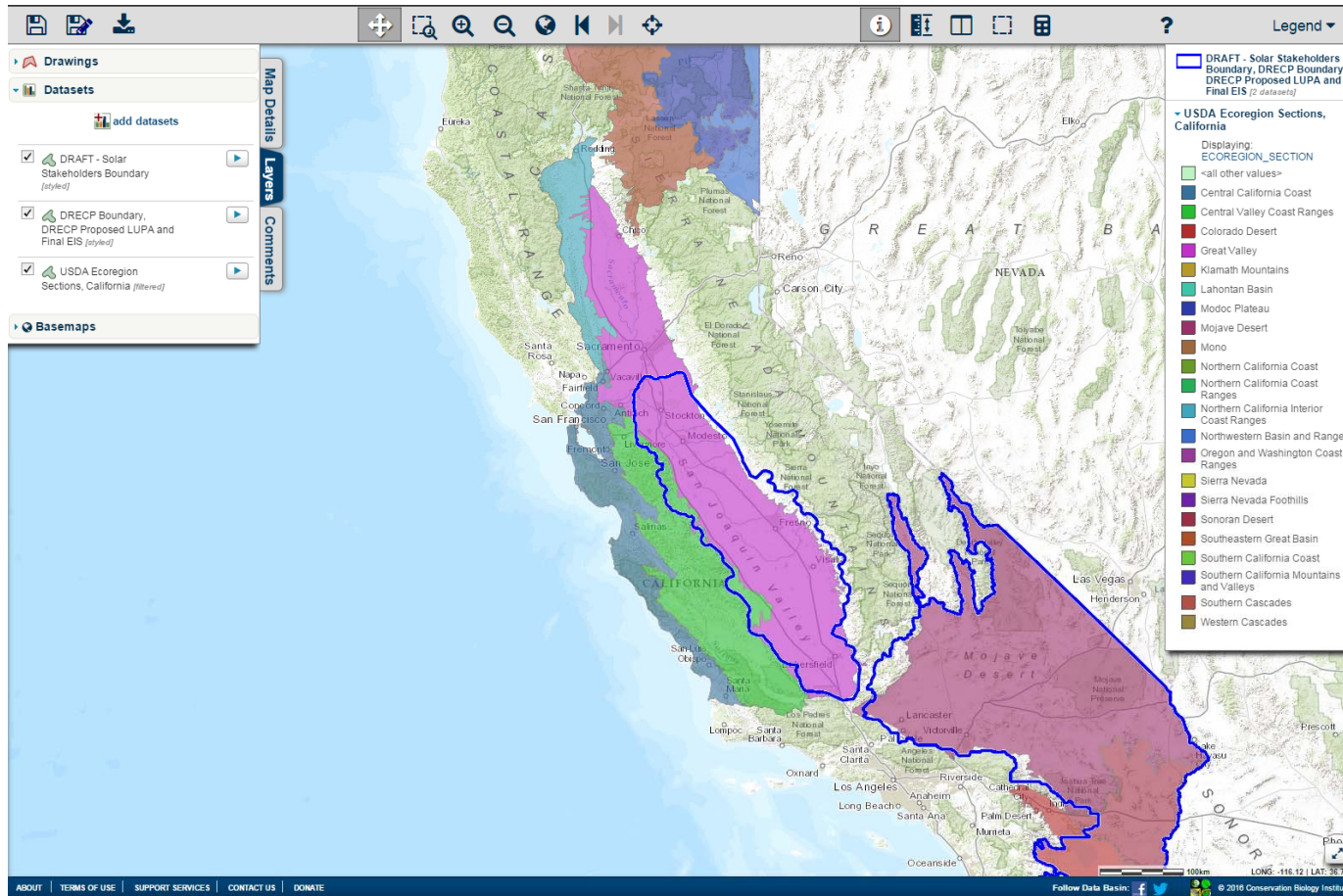


6. Connectivity (Essential Connectivity Areas of California)  
<https://databasin.org/datasets/4f6cd2c4e5b4461e9de63e7f7eb2a67a>

- Linkage 1 – 43 ac (very poor condition)  
 Linkage 2 – 356 ac (poor condition)  
 Linkage 3 – 2,345 ac (moderate condition)  
 Linkage 4 – 452 ac (good condition)

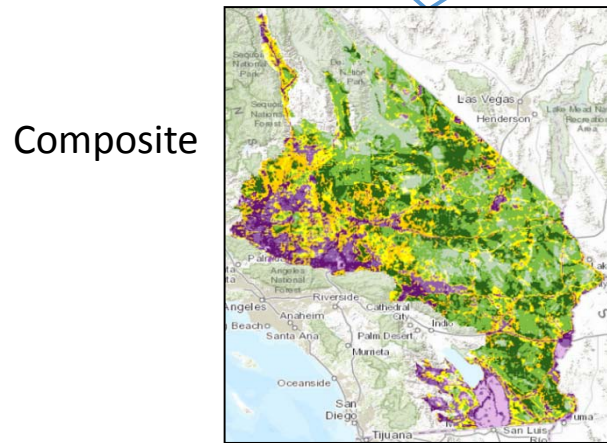
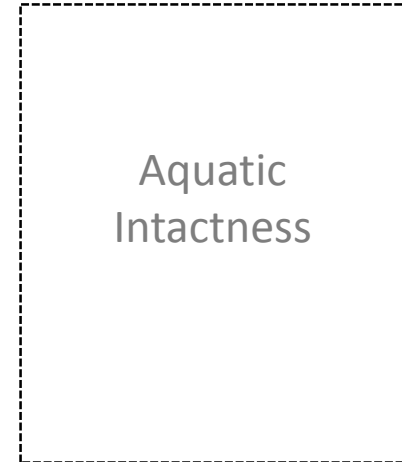
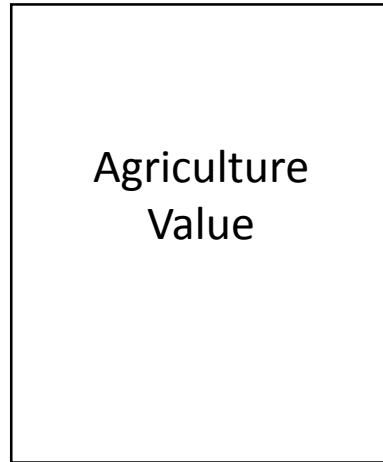
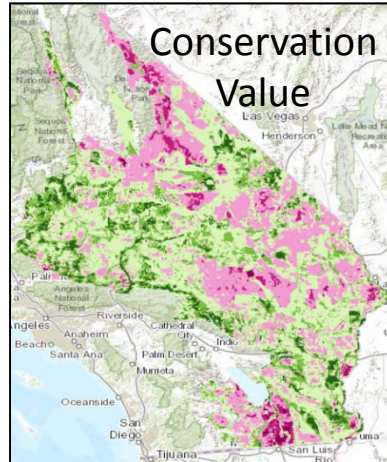
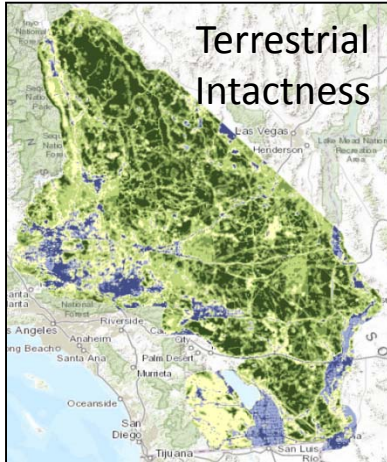


# Statewide Datasets

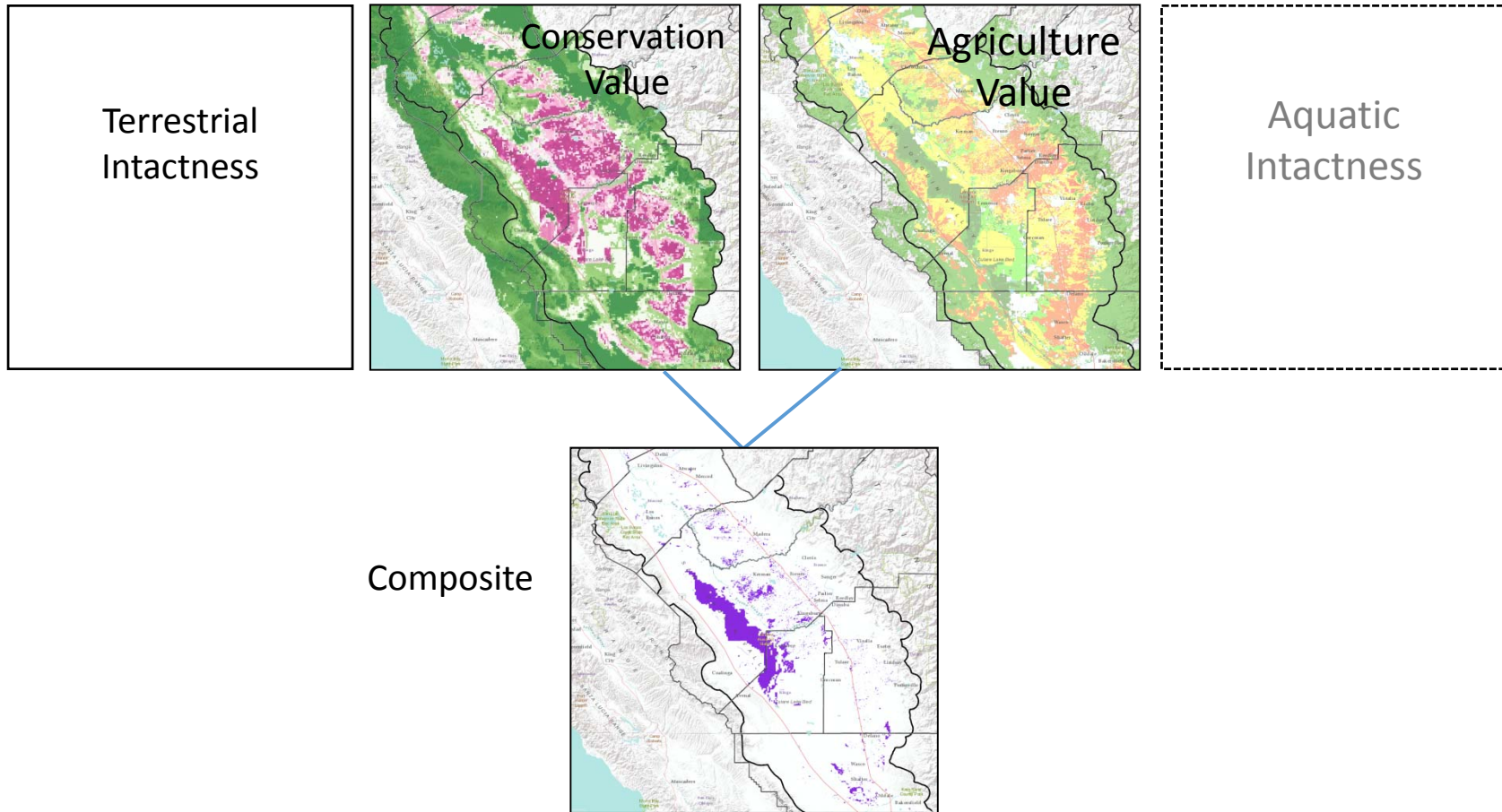




# Regional Datasets



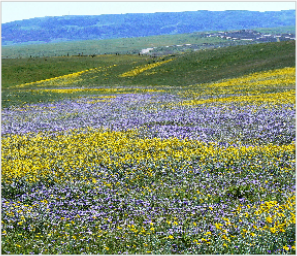
# Regional Datasets



# RETI 2.0 Datasets

**California Biological Data**  
Created by Conservation Biology Institute Jan 18, 2016

Manage... Add to...



**About**  
This gallery contains datasets pertaining to biological content in the State of California, including species, natural communities, and some model aggregation results.

**Tags**  
biological, values, california

This gallery is visible to everyone

**Gallery contains**

- 14 Folders
- 39 Datasets
- 6 Galleries

**Usage**

- bookmarked by 1 member

---

**Gallery Contents** | Gallery Credits | Attachments | Comments (0)

Sort by: Default | Display: [Grid View] [List View] [Settings]

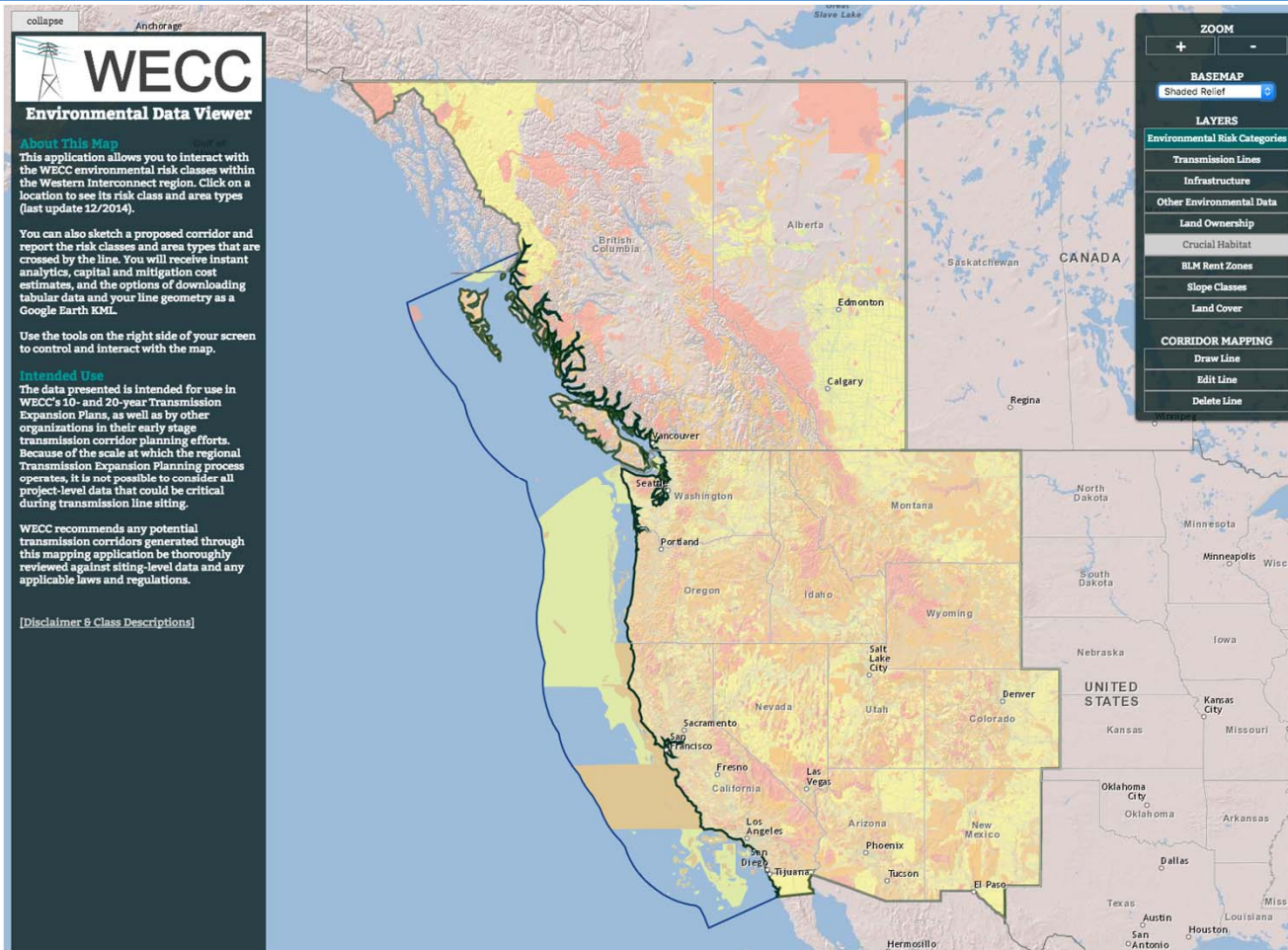
- Conservation Model Results (3 folders)
  - DRECP (5 items)
    - Dataset: Current Terrestrial Landscape Intactness (1km), DRECP
    - Dataset: Conservation Value (1km), DRECP
    - Dataset: Terrestrial Intactness - Conservation Value Combination (1km), DRECP
    - Dataset: Covered Species Stack - The Combined Distribution of 37 Covered Species ...
    - Dataset: Other Species Stack - The Combined Distribution of 55 Non-Covered ...
  - San Joaquin Valley (2 items)
  - Statewide (1 item)
- Natural Communities (4 folders)
- Species (4 folders)

# Environmental and Land Use Technical Group

---

- Next Steps
  - Review available datasets
  - Identify new and additional data sets
  - Review proposed reporting format
  
- Run a “test” area
- Aerial Impacts: Avian – Birds and Bats
- Summarize profiles and compare areas

# Environmental and Land Use Technical Group



# Environmental and Land Use Technical Group

---

- Next Steps
  - Integrate local agency land use data
  - Integrate with WECC wide environmental data, data from other states, and available project specific data sets