

DOCKETED

Docket Number:	15-RETI-02
Project Title:	Renewable Energy Transmission Initiative 2.0
TN #:	208287
Document Title:	Introduction Presentation
Description:	Introduction
Filer:	clare Laufenberg
Organization:	California Energy Commission
Submitter Role:	Commission Staff
Submission Date:	1/21/2016 12:14:01 PM
Docketed Date:	1/21/2016

Renewable Energy Transmission Initiative 2.0 Transmission Technical Work Group Workshop #1

January 22, 2015



California Public
Utilities
Commission



California Energy
Commission



California ISO

Today's Agenda

- Welcome
- Agenda and Scope
 - Review RETI 2.0 Objectives and TTIG Mandate
- California Planning Updates
- Neighboring Western Planning Region Updates
- WECC Update
 - Transmission Expansion Planning Policy Committee
- Interregional Project Developer Updates
- Public comments
- Wrap up



**California Public
Utilities
Commission**



**California Energy
Commission**



California ISO

RETI 2.0 Objectives

- Statewide, non-regulatory planning effort to help meet statewide GHG and renewable energy goals.
- Explore combinations of renewable generation resources in California and throughout the West that can best meet goals
- Identify land use and environmental opportunities and constraints to accessing these resources
- Build understanding of transmission implications of renewable scenarios, and identify common transmission elements
- Inform future planning and regulatory proceedings



**California Public
Utilities
Commission**

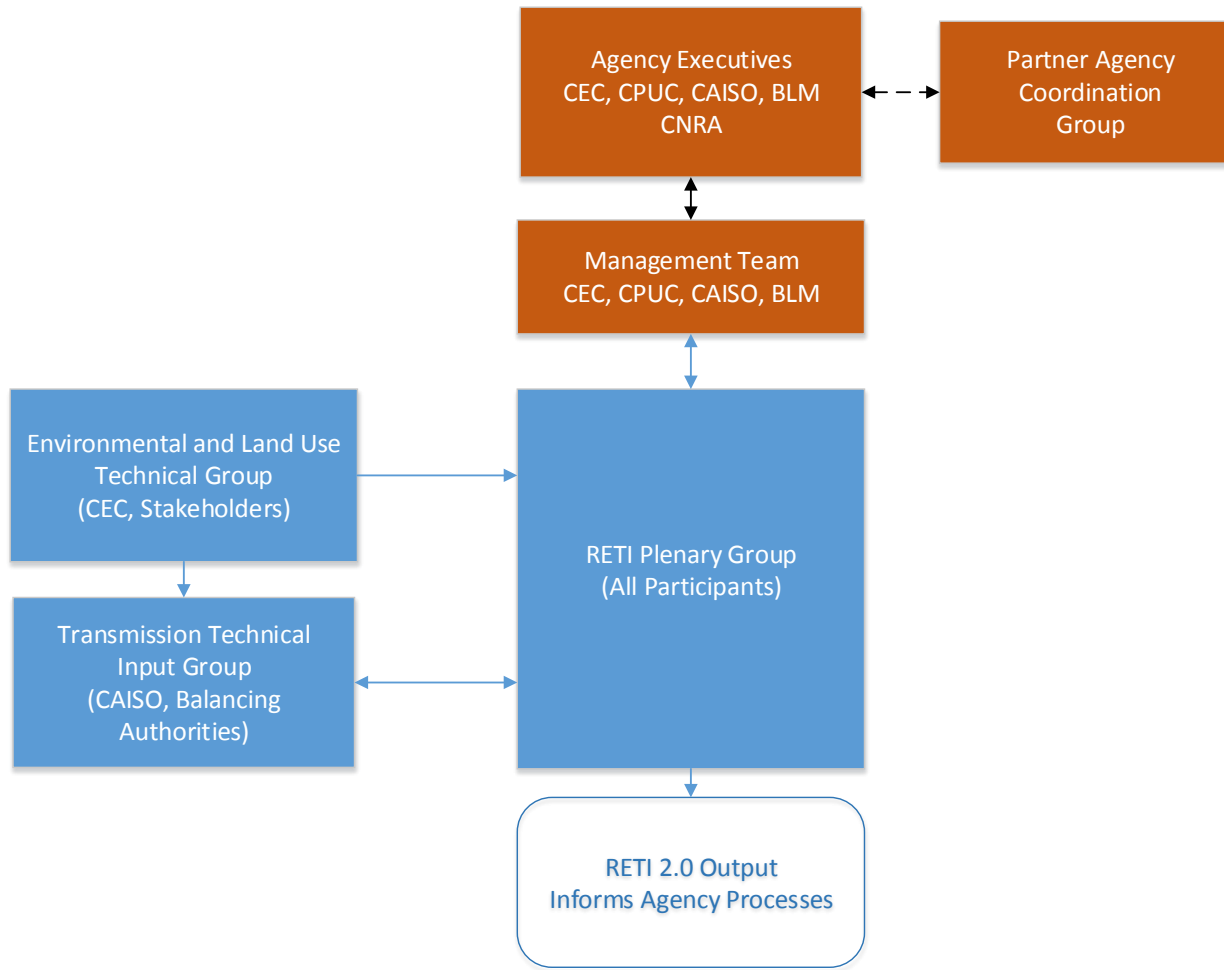


**California Energy
Commission**



California ISO

Organizational Structure



**California Public
Utilities
Commission**



**California Energy
Commission**



California ISO

Technical Group Contributions

Transmission Technical Input

- Characterize existing transmission system capacity and planned improvements/changes and their implications for accessing additional renewable resources
- Provide initial transmission input on likely in-state developments necessary to access potential renewable generation and refine the data as combinations of renewable resources are developed through other RETI groups' activities.
- Provide planning level transmission cost estimates and any available information on environmental and other permitting issues for in-state requirements, using existing data to the greatest extent possible
- Compile transmission planning information on potential WECC-wide system reinforcements that may provide or improve access to renewable generation or to integration resources
- Work interactively with RETI Plenary Group to evaluate transmission implications for accessing potential renewable energy generation areas



**California Public
Utilities
Commission**



**California Energy
Commission**



California ISO

Transmission Technical Input Group products feed into Plenary Group Times

Month	Objectives
January	Explore planning goals (GHG, renewables, and system)
February	Gather renewable resource information, studies of combined value
March	Understand environmental, land use, and transmission constraints and opportunities ; Recommend scenario approach
April	Build conceptual resource combinations; Engage local communities
May	Explore environmental and transmission implications
June	Propose draft scenarios of renewables and transmission
July	Analyze scenarios for common elements and solutions
August	Review and refine solutions; develop recommendations
September	Release draft report



California Public
Utilities
Commission



California Energy
Commission



California ISO

Next Steps for the TTIG

Given March deliverable: Transmission Group Report-Out

Technical Group recommendations on known constraints and opportunities in the transmission system, and recommendations on evaluating the transmission implications of resource combinations, including “tinker-toy” level identification of infrastructure, costs, and impacts

Questions for stakeholders:

1. Is the information presented today the type of information needed to inform the RETI 2.0 Process?
2. What other information and sources of information should the TTIG turn to?
3. What relevant information can you provide?
4. How does your proposal support/improve renewable integration in California and across the West?



California Public
Utilities
Commission



California Energy
Commission



California ISO