

DOCKETED

Docket Number:	15-AFC-02
Project Title:	Mission Rock Energy Center
TN #:	213014
Document Title:	Data Request Issues Resolution: Biological Resources
Description:	PowerPoint presentations made by CEC staff at the August 26,2016 public workshop
Filer:	Cathy Hickman
Organization:	California Energy Commission
Submitter Role:	Commission Staff
Submission Date:	8/29/2016 1:10:25 PM
Docketed Date:	8/29/2016



California Energy Commission

Data Request Issues Resolution Biological Resources

Public Workshop
Mission Rock Energy Center

August 26, 2016

Andrea Martine



California Energy Commission

Biological Resources

	DRs to which Applicant DID NOT Object (Set 1, June 24, 2016)	DR to which Applicant DOES Object (Aug. 1, 2016)
DR 23 (<i>Show area of Riparian Habitat on Fig. 5.2-6</i>)	X	
DR 24 (<i>Clarify Impacts to Riparian in Table 5.2-3</i>)	X	
DR 25 (<i>Clarify Gen-Tie Impacts to S and SS Spec. Habitat</i>)	X	
DR 26 (<i>Expl. Impacts to Riparian from Linears – NG and Process H2O</i>)	X	
DR 27 (<i>Plant List of Species Impacted by Linears</i>)	X	
DR 28 (<i>Notification of LSA Info</i>)		X



California Energy Commission

Biological Resources

Data Request #28

Request:

Notification of a Lake and Streambed Alteration Agreement

Need and Purpose:

To determine potential impacts to fish, wildlife, and plant resources in riparian habitat from the gen-tie, gas line, and water line. Work would occur in and near riparian habitat but more detailed information is necessary to determine possible impacts.

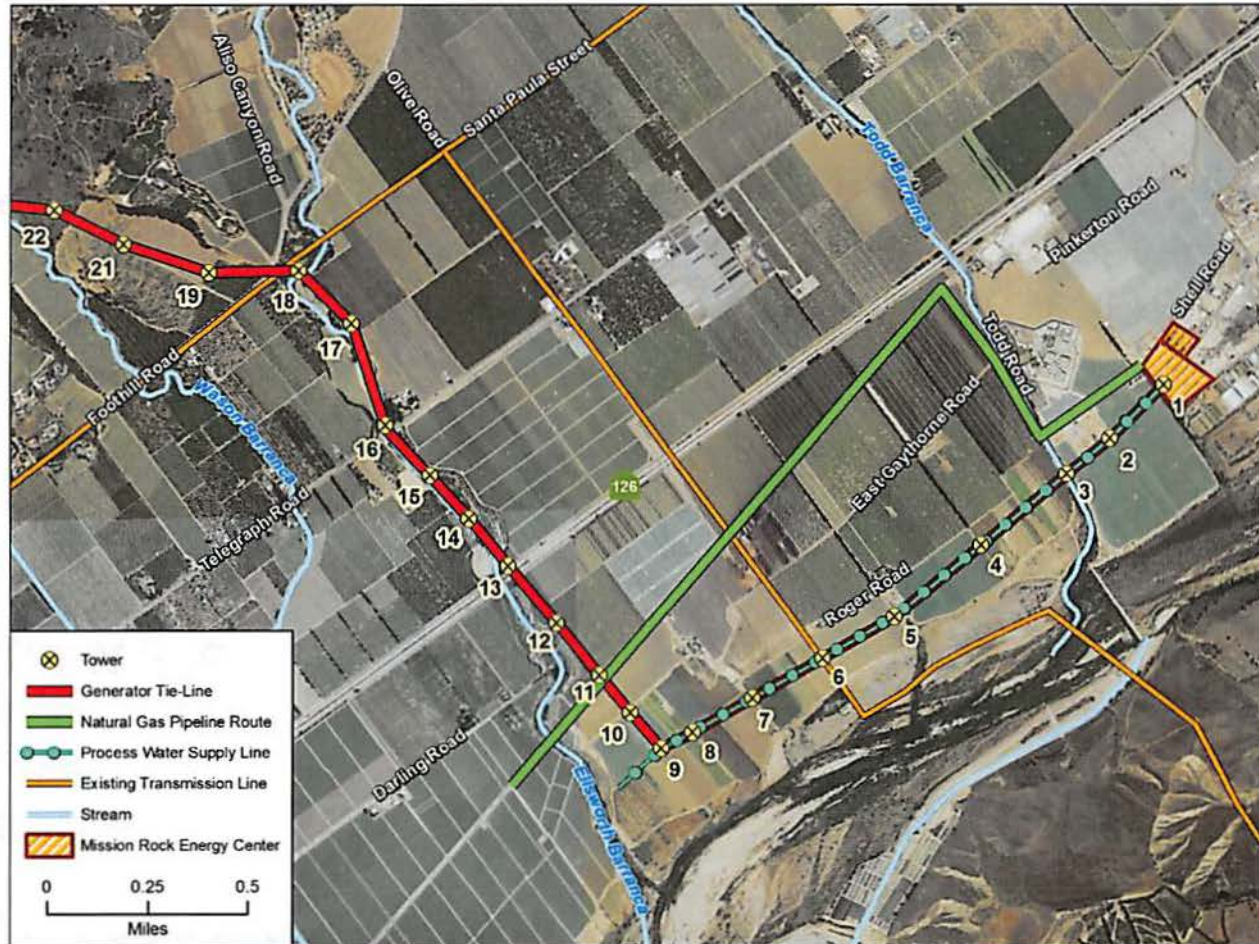
Intent:

The Notification provides a way to obtain the necessary information.



California Energy Commission

Biological Resources





Biological Resources

Alternative Questions for Information:

- Describe impacts to riparian habitat associated with the gen-tie.
- Describe the techniques that will be used to prevent sediment from entering drainages during and after construction.
 - *gen-tie, gas line, water line*
- Describe project avoidance and/or minimization measures to protect fish, wildlife, and plant resources.
 - *gen-tie, gas line, water line*
- Describe any project mitigation and/or compensation measures to protect fish, wildlife, and plant resources.
 - *gen-tie, gas line, water line*