

## DOCKETED

<b>Docket Number:</b>	06-AFC-09C
<b>Project Title:</b>	Colusa Generating Station - Compliance
<b>TN #:</b>	214076
<b>Document Title:</b>	Notice of Determination for the Revised Petition to Amend Colusa Generating Station
<b>Description:</b>	On September 30, 2016, PG&E submitted a revision to its original Petition for Amendment filed on June 28, 2016. The revised petition to amend requests approval of: 1) addition of a warehouse; 2) addition of electrical equipment and three electrical cabinets to allow gradual increase of load to the electric motors for each fan on the Air-Cooled Condenser.
<b>Filer:</b>	Anwar Ali
<b>Organization:</b>	California Energy Commission
<b>Submitter Role:</b>	Commission Staff
<b>Submission Date:</b>	10/17/2016 3:48:17 PM
<b>Docketed Date:</b>	10/17/2016

**CALIFORNIA ENERGY COMMISSION**

1516 NINTH STREET  
SACRAMENTO, CA 95814-5512  
www.energy.ca.gov



**NOTICE OF DETERMINATION  
PETITION TO AMEND  
COLUSA GENERATING STATION  
(06-AFC-09C)**

On June 28, 2016 DayZen, LLC, on behalf of Pacific Gas and Electric Company (PG&E), filed a petition to amend (amendment) with the California Energy Commission (Energy Commission) requesting modifications to the Colusa Generating Station (CGS). PG&E submitted a revision to this amendment on September 30, 2016.

CGS is a 660-megawatt, combined-cycle facility located in an unincorporated area of Colusa County, six miles north of the community of Maxwell. The project was certified by the Energy Commission on April 23, 2008; and construction was initiated on October 2, 2008.

**DESCRIPTION OF PROPOSED MODIFICATIONS**

The June 28, 2016 amendment (TN 212004) sought approval to modify the CGS to: 1) add a new warehouse; 2) add electrical equipment and three electrical cabinets to allow gradual increase of load to the electric motors for each fan on the air-cooled condenser (ACC); and 3) install rotating intake screens to control algae blooms at the water intakes for the Tehama Colusa Canal (TCC).

The revised amendment submitted on September 30, 2016 (TN 213864) eliminated the component pertaining to the installation of the rotating screens at the TCC water intakes. PG&E has requested to bifurcate the initial petition into two separate amendments. For the revised amendment currently under consideration by the Energy Commission, PG&E has requested first to approve the proposed project modifications pertaining to the addition of: 1) a new warehouse; and 2) electrical equipment to allow for variable loading of the ACC (ACC soft start). For the second, future, amendment, PG&E will submit a separate amendment request for the installation of the water intake screens at the TCC at a later date.

For additional information, the Energy Commission's webpage for this facility, <http://www.energy.ca.gov/sitingcases/colusa/index.html>, has a link to the current petition to amend (TN 213864) accessible through the webpage in the box labeled "Compliance Proceeding." Click on the "Documents for this Proceeding (Docket Log)" option.

**ENERGY COMMISSION STAFF REVIEW AND DETERMINATION**

Pursuant to section 1769(a)(2) of Title 20, California Code of Regulations, Commission approval of a petition to amend is not required "(w)here staff determines that there is no possibility that the modifications may have a significant effect on the environment, and if the modifications will not result in a change or deletion of a condition adopted by the commission in the final decision or make changes that would cause the project not to comply with any applicable laws, ordinances, regulations, or standards [LORS]...."

Energy Commission staff has determined for this petition that formal approval by the Energy Commission at a noticed Business Meeting is not required, and the proposed modifications meet the criteria for approval at the staff level because:

- The modifications will not have any significant effect on the environment;
- Existing conditions of certification are sufficient to cover the proposed modifications without changes to, or deletions of, any conditions of certification; and
- The project as modified will maintain full compliance with applicable LORS.

Staff's conclusions for each of the above technical or environmental areas are summarized in the following table.

**SUMMARY OF STAFF RESPONSES TO PETITION**

TECHNICAL/ENVIRONMENTAL AREAS REVIEWED	STAFF RESPONSE			Revised Conditions of Certification Recommended
	Technical Area Not Affected	No Significant Environmental Impact or LORS Inconsistency*	Process As Amendment	
Air Quality		X		N/A
Biological Resources	X			N/A
Cultural Resources		X		N/A
Efficiency	X			N/A
Facility Design		X		N/A
Geological and Paleontological Resources		X		N/A
Hazardous Materials Management		X		N/A
Land Use		X		N/A
Noise and Vibration		X		N/A
Public Health		X		N/A
Reliability		X		N/A
Socioeconomics		X		N/A
Soil and Water Resources		X		N/A
Traffic and Transportation		X		N/A
Transmission Line Safety and Nuisance	X			N/A
Transmission System Engineering	X			N/A
Visual Resources		X		N/A
Waste Management		X		N/A
Worker Safety and Fire Protection		X		N/A

\*No Energy Commission approval is necessary where staff determines there is no possibility that the proposed modifications would have a significant effect on the environment, and the modifications would not result in a change in or deletion of a condition adopted by the Commission in the Final Decision, or make changes that would cause project noncompliance with any applicable laws, ordinances, regulations, or standards (Cal. Code Regs., tit. 20, § 1769 (a)(2)).

Energy Commission technical staff reviewed the petition for potential environmental effects and consistency with applicable LORS. Staff has determined that the technical or environmental areas of Biological Resources, Efficiency, Transmission Line Safety and Nuisance, and Transmission System Engineering are not affected by the proposed changes.

For the technical areas of Air Quality, Cultural Resources, Facility Design, Geological and Paleontological Resources, Hazardous Materials Management, Land Use, Noise and Vibration, Public Health, Reliability, Socioeconomics, Soil and Water Resources, Traffic and Transportation, Visual Resources, Waste Management, and Worker Safety and Fire Protection, staff has determined the project would continue to comply with applicable LORS and no changes to any conditions of certification are necessary to ensure that no significant impacts occur. Therefore, staff is processing the request as a Staff Approved Project Modification. Staff notes the following for these technical areas:

- **Air Quality.** The impacts of the proposed project modifications would be less than significant with the implementation of the Conditions of Certification **AQ-SC3** through **AQ-SC5**. The proposed project modification would not require changes to any Air Quality conditions of certification. The project would continue to comply with applicable LORS.
- **Cultural Resources.** The proposed construction of improvements at the CGS would not affect any known cultural resources. Although the proposed modification could result in impacts to as-yet-identified, buried cultural resources, implementation of Conditions of Certification **CUL-1** through **CUL-7** would reduce such impacts to less than significant. Condition of Certification **CUL-7** requires the project owner to cease work within the "immediate vicinity" of an inadvertent cultural resource discovery, whereas Colusa County General Plan Policy CON 3-2 requires work cessation within 100 feet of the discovery. The Cultural Resources Mitigation and Monitoring Plan required under **CUL-3**, defines "immediate vicinity" for work cessation as 100 feet from an inadvertent discovery. The proposed amendment, therefore, would not require any change in the CGS conditions of certification to retain conformance with LORS.
- **Facility Design.** For the construction of the new warehouse, the ACC soft start's electrical cabinets and their concrete pads, and installation of the new compressor pad and associated electrical work, the project owner must comply with the California Building Code (CBC) and related engineering LORS. Implementation of the existing Facility Design conditions of certification identified in the April 2008 Decision would ensure compliance with CBC and all applicable LORS.
- **Geological and Paleontological Resources.** Based on the information provided in the amendment petition, the proposed modifications would have no significant impact on geologic or paleontologic resources, or impacts to public health and safety due to geologic hazards. The proposed modifications would not require any change to the conditions of certification related to geologic or paleontologic resources. Compliance with current geology LORS and Conditions of Certification **GEO-1**, **GEN-1**, and **CIVIL-1** specified in the April 2008 Decision would mitigate the effects of geologic hazards at the site.
- **Hazardous Materials Management.** Several hazardous materials will be used during the installation and construction of the new warehouse and three electrical cabinets. Similar to equipment maintenance activities, these materials would include solvents, gasoline, lubricants, and welding gases which are already included in the annual compliance report under the existing **HAZ-1** Condition of Certification. No

extremely hazardous or regulated hazardous materials will be used on site specifically for any of the construction activities listed above. Therefore, with project owner's continued compliance with existing Conditions of Certification, **HAZ-1** specifically, the proposed modifications would not have a significant effect on the environment and would continue to comply with all applicable LORS.

- **Land Use.** The proposed construction of the new warehouse would comply with the design standards specified in the M-2 zone (heavy industrial) of the Colusa County Zoning Code, as required by Condition of Certification **LAND-1**. Land use impacts would be less than significant and the project would continue to be consistent with the April 2008 Decision as well as the revised Colusa County Zoning Code and 2030 General Plan. The installation of electrical equipment for the ACC soft start would not affect the technical area of land use.
- **Noise and Vibration.** Construction work associated with the proposed project modifications would be temporary and would occur during the daytime hours. The proposed modifications would have no effect on the plant's operational noise. Any noise generated during these construction activities would result in a less than significant impact with implementation of the existing Noise conditions of certification in the April 2008 Decision.
- **Public Health.** All emissions from the construction of the proposed project modifications would be limited and negligible and much less than the emissions analyzed for licensed facility. The plant construction emissions evaluated in the Air Quality section of the April 2008 Decision determined that they would result in less than significant environmental impacts with the implementation of the Air Quality conditions of certification. No significant impacts for public health would occur due to the construction of the proposed project modifications.
- **Reliability.** Starting and stopping each ACC fan repeatedly to accommodate plant cycling induces stresses on its gearbox contributing to higher than desired failure rates of the gearboxes and fan motors. In order to reduce these stresses, the project owner has proposed to install soft start electrical equipment within three new electrical equipment cabinets. The proposed soft start equipment would control the flow of electricity to allow each fan motor to gradually increase electric load to the motor thereby reducing start-up inertia stresses. The addition of the ACC soft start capability would increase the power plant's reliability, as this would result in reduction in the breakdown of fan motors due to the reduced stresses on the gearboxes associated with plant cycling.
- **Socioeconomics.** The proposed amendment would have less than significant socioeconomic impact as the associated activities would require minimal workforce for a few months. Implementation of Conditions of Certification **SOCIO-1** (procure material and supplies in Colusa and Glenn counties) and **SOCIO-2** (payment of school impact fees to Maxwell Unified School District) would ensure compliance with applicable LORS.
- **Soil and Water Resources.** The proposed amendment would not result in a significant impact on soil and water resources, as the mitigation for the licensed project would also mitigate for the potential impacts of the proposed project

modifications. The Drainage, Erosion, and Sediment Control Plan required in Condition of Certification **SOIL&WATER-2** would apply to the proposed project modifications; therefore there would be no significant impacts to water supply and water quality. Additionally, there would be no significant impacts due to flooding. With continued implementation of the existing conditions of certification, impacts to soil and water resources would be less than significant and the project would comply with applicable LORS.

- **Traffic and Transportation.** The construction workforce is anticipated to require a maximum of 6 workers on site for a maximum of 60 days. Based on the minimal number of trips that would be generated by workers and delivery trucks, traffic impacts would be less than significant.
- **Visual Resources.** The proposed project modifications would not substantially alter existing views from sensitive offsite viewing points. The new warehouse structure would be similar in design to the existing adjacent warehouse. The new equipment would be located under the ACC. The proposed modifications would need to meet the requirements of Conditions of Certification **VIS-1** (color treatment of structures), **VIS-2** (lighting requirements), and applicable LORS. Based on the location of the equipment, the views offsite would be blocked by existing facilities on the site, therefore visual impacts would be less than significant.
- **Waste Management.** The hazardous and non-hazardous materials generated during construction would include paint, wires, waste oil, empty containers, and possibly trace amounts of miscellaneous building materials. The proposed project modifications would not result in any additional environmental impacts related to waste management compared to those identified for the licensed project provided that the project owner complies with Condition of Certification **WASTE-5**. For the proposed project modifications, the project owner would be required to comply with Condition of Certification **WASTE-5** by submitting information on the total construction waste generated and ensure wastes are disposed of properly.
- **Worker Safety and Fire Protection.** With implementation of the existing conditions of certification, the proposed project modifications would not have any significant effect on the environment and would continue to comply with all applicable LORS. Construction activities associated with the project modifications would comply with worker safety and fire safety requirements identified in the health and safety plans as required by Condition of Certification **WORKER SAFETY-1** for the licensed project.

The **Environmental Justice Population Figure** (attached) shows 2010 census blocks in the six-mile radius of the CGS with a minority population greater than or equal to 50 percent. The population in these census blocks represents an Environmental Justice (EJ) population based on race and ethnicity as defined in the Council on Environmental Quality's *Environmental Justice: Guidance Under the National Environmental Policy Act*. Staff has determined that the proposed modifications would not cause any significant environmental impacts. Therefore, there are no significant impacts to any population within the CGS six-mile radius, including environmental justice population.

This Notice of Determination has been mailed to the Energy Commission's facility mail list of interested parties and property owners adjacent to the facility site. It has also been emailed to the facility listserv. The listserv is an automated Energy Commission e-mail system by which information about this facility is e-mailed to parties who have subscribed. To subscribe, go to the Energy Commission's webpage for this facility, cited above, scroll down the right side of the project's webpage to the box labeled "Subscribe," and provide the requested contact information.

Any person may file an objection to staff's determination within 14 days of the date of this Notice on the grounds that the project modification does not meet the criteria set forth in section 1769(a)(2). Absent any relevant objections, the amendment petition will be approved 14 days after this Notice is docketed. To use the Energy Commission's electronic commenting feature to object to staff's determination, go to the Energy Commission's webpage for this facility, cited above, click on the "Submit e-Comment" link, and follow the instructions in the on-line form. Be sure to include the facility name in your comments. Once submitted, the Energy Commission Dockets Unit reviews and approves your comments, and you will receive an e-mail with a link to them.

Written comments may also be mailed or hand-delivered to:


California Energy Commission  
Dockets Unit, MS-4  
Docket No. 06-AFC-09C  
1516 Ninth Street  
Sacramento, CA 95814-5512

All comments and materials filed with and approved by the Dockets Unit will be added to the facility Docket Log and be publicly accessible on the Energy Commission's webpage for the facility.

If you have questions about this Notice, please contact Anwar Ali, Compliance Project Manager, at (916) 654-5020, or by fax to (916) 654-3882, or via e-mail at [anwar.ali@energy.ca.gov](mailto:anwar.ali@energy.ca.gov).

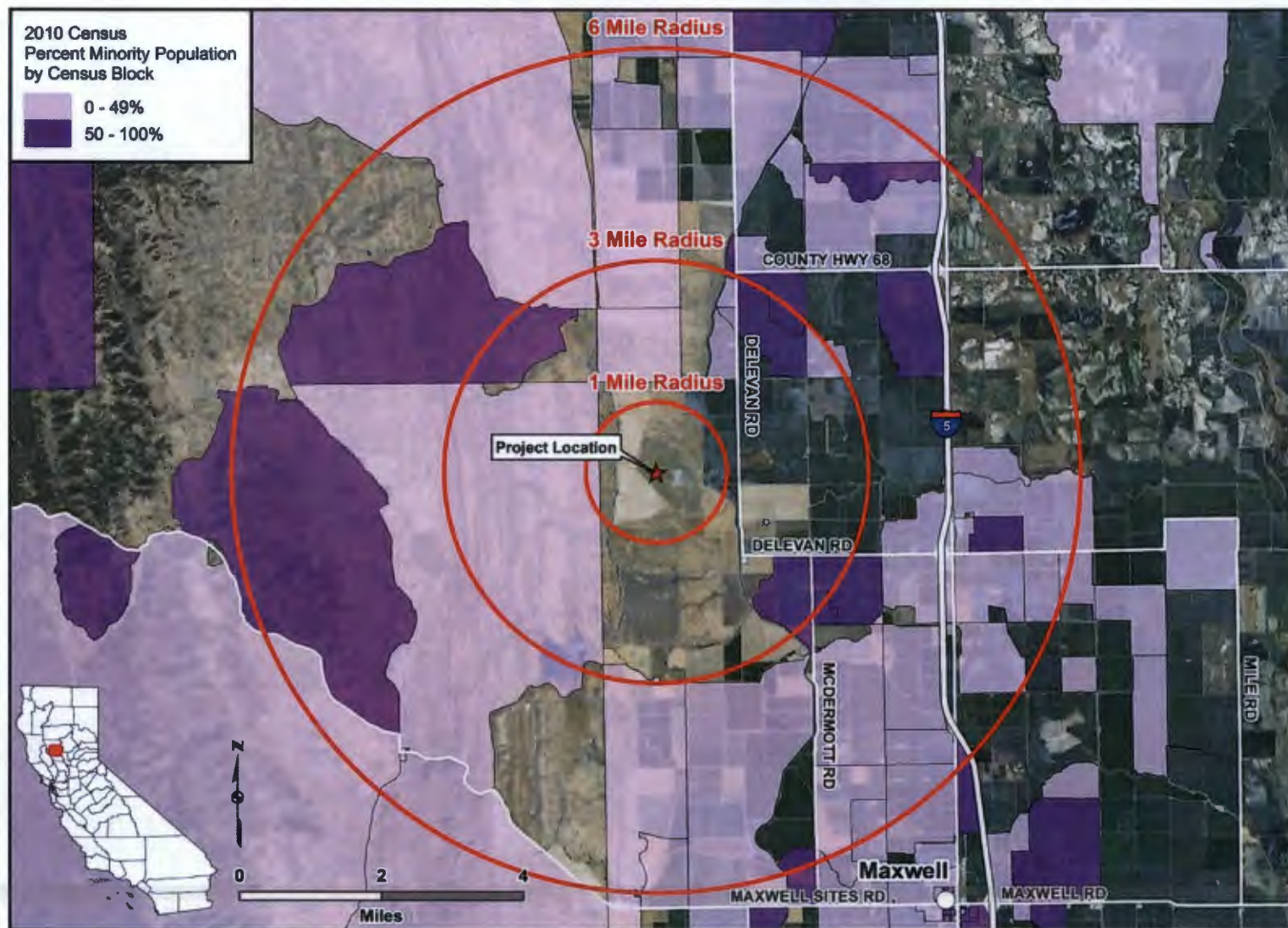
For information on participating in the Energy Commission's review of the petition, please call the Public Adviser at (800) 822-6228 (toll-free in California) or send your e-mail to [publicadviser@energy.ca.gov](mailto:publicadviser@energy.ca.gov). News media inquiries should be directed to the Energy Commission Media Office at (916) 654-4989, or by e-mail to [mediaoffice@energy.ca.gov](mailto:mediaoffice@energy.ca.gov).

Date 10/17/16

  
\_\_\_\_\_  
**Christine Root**  
Compliance Office Manager  
Siting, Transmission & Environmental Protection  
Division

CC: Colusa Mail list 7172  
Colusa listserv

**ENVIRONMENTAL JUSTICE POPULATION FIGURE**  
Colusa Generating Station - Environmental Justice Population Figure



CALIFORNIA ENERGY COMMISSION - SITING, TRANSMISSION AND ENVIRONMENTAL PROTECTION DIVISION  
SOURCE: Census 2010 PL 94-171 Data