

DOCKETED

Docket Number:	15-AFC-01
Project Title:	Puente Power Project
TN #:	220289
Document Title:	PUENTE POWER PROJECTâ€™ BIOLOGICAL RESOURCES ILLUSTRATIVE FIGURES FOR PRESENTATION AT EVIDENTIARY HEARING
Description:	Figures 1 through 3 are illustrative depictions of the area that would otherwise be encompassed in a full 100 foot buffer along the north end of the project and demolition access road.
Filer:	Raquel Rodriguez
Organization:	California Energy Commission
Submitter Role:	Commission Staff
Submission Date:	7/21/2017 9:20:15 AM
Docketed Date:	7/21/2017

Memorandum

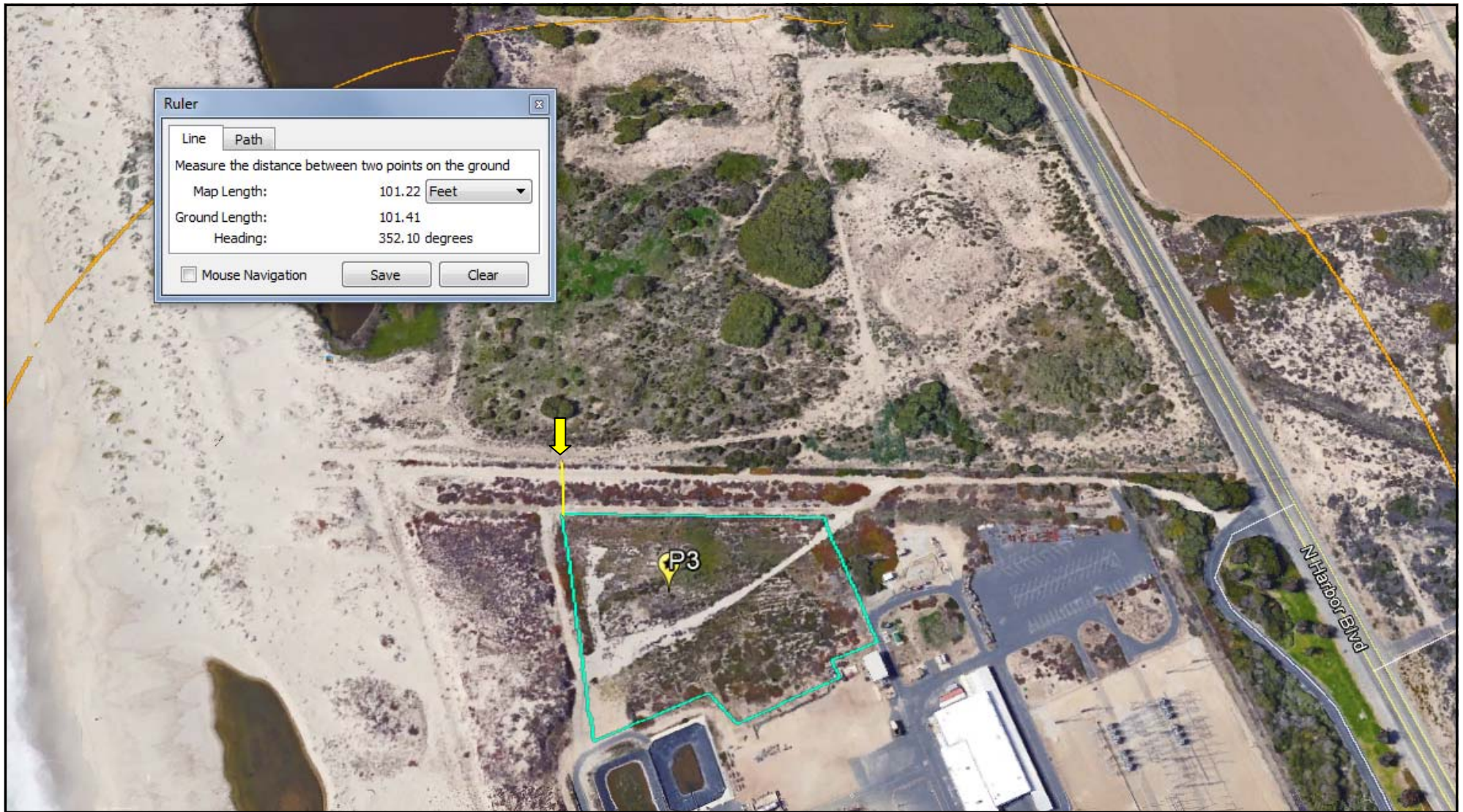
Date: July 21, 2017
Telephone: (916) 651-0966

To: Docket No. 15-AFC-01
From: California Energy Commission – Leonidas Payne
1516 Ninth Street Project Manager
Sacramento, CA 95814-5512

Subject: PUENTE POWER PROJECT— BIOLOGICAL RESOURCES ILLUSTRATIVE FIGURES FOR PRESENTATION AT EVIDENTIARY HEARING

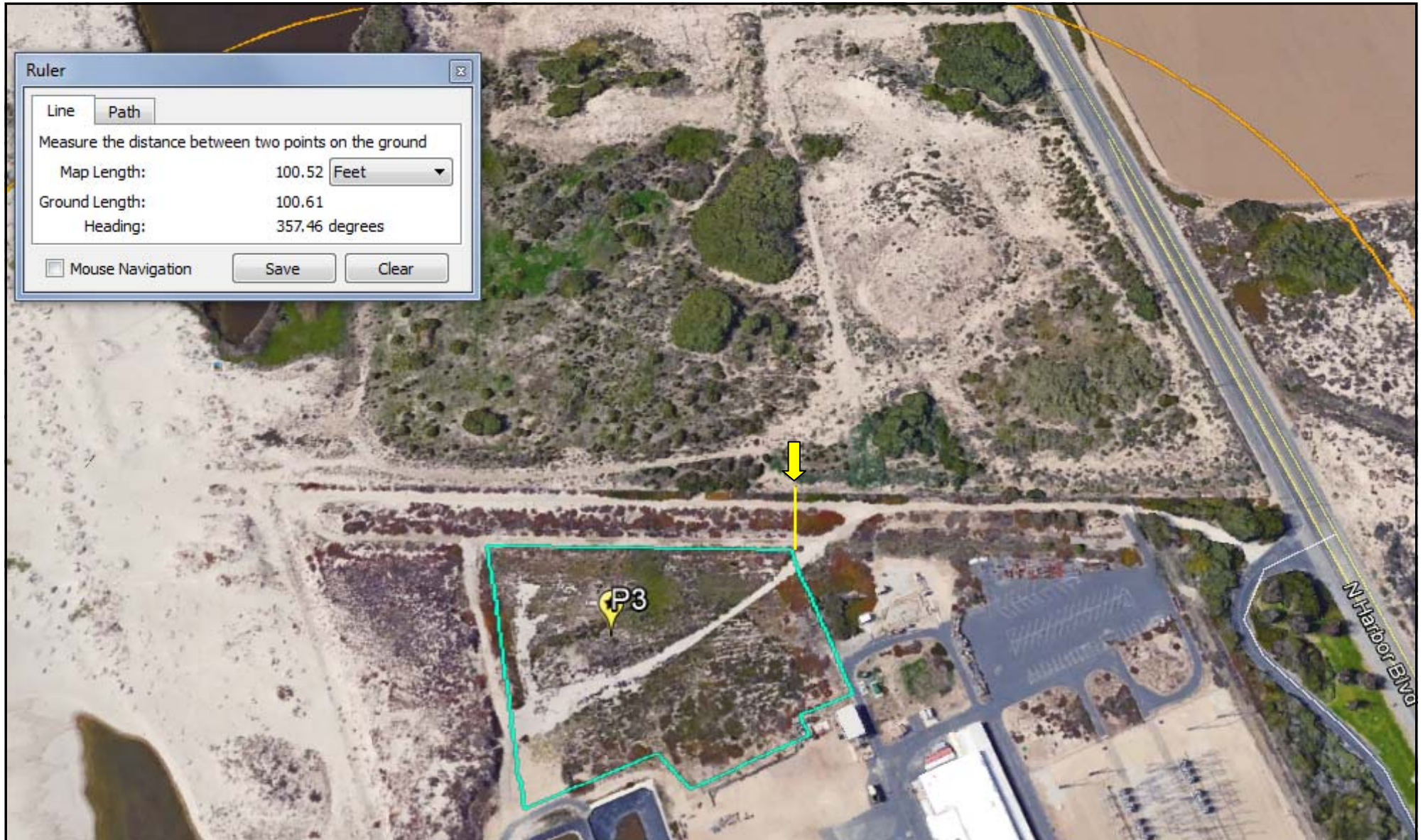
The attached Figures 1 through 3 are illustrative depictions of the area that would otherwise be encompassed in a full 100 foot buffer along the north end of the project and demolition access road, and will be included in materials presented for discussion at the upcoming July 26-28 Evidentiary Hearings on the Puente Power Project.

FIGURE 1 — ILLUSTRATIVE LIMIT OF 100' BUFFER @ NORTHWEST CORNER OF SITE



↓ = Limit of 100 foot buffer, encroaching on adjacent McGrath Lake preserve land.

FIGURE 2 — ILLUSTRATIVE LIMIT OF 100' BUFFER @ NORTHEAST CORNER OF SITE



↓ = Limit of 100 foot buffer, encroaching on adjacent McGrath Lake preserve land.

FIGURE 3—SITE CONTEXT AND EXTENT OF OMITTED 100 FOOT BUFFER

