

DOCKETED

Docket Number:	15-AFC-01
Project Title:	Puente Power Project
TN #:	215469
Document Title:	Biological Resources RSA Workshop Presentation
Description:	FSA staff workshop presentations. The Biological Resources, Cultural Resources, Environmental Justice, Land Use, and Traffic and Transportation presentations were made, the others were not.
Filer:	Cenne Jackson
Organization:	California Energy Commission
Submitter Role:	Commission Staff
Submission Date:	1/20/2017 3:26:23 PM
Docketed Date:	1/20/2017



California Energy Commission

Puente Power Project Final Staff Assessment Biological Resources

Carol Watson and Jon Hilliard

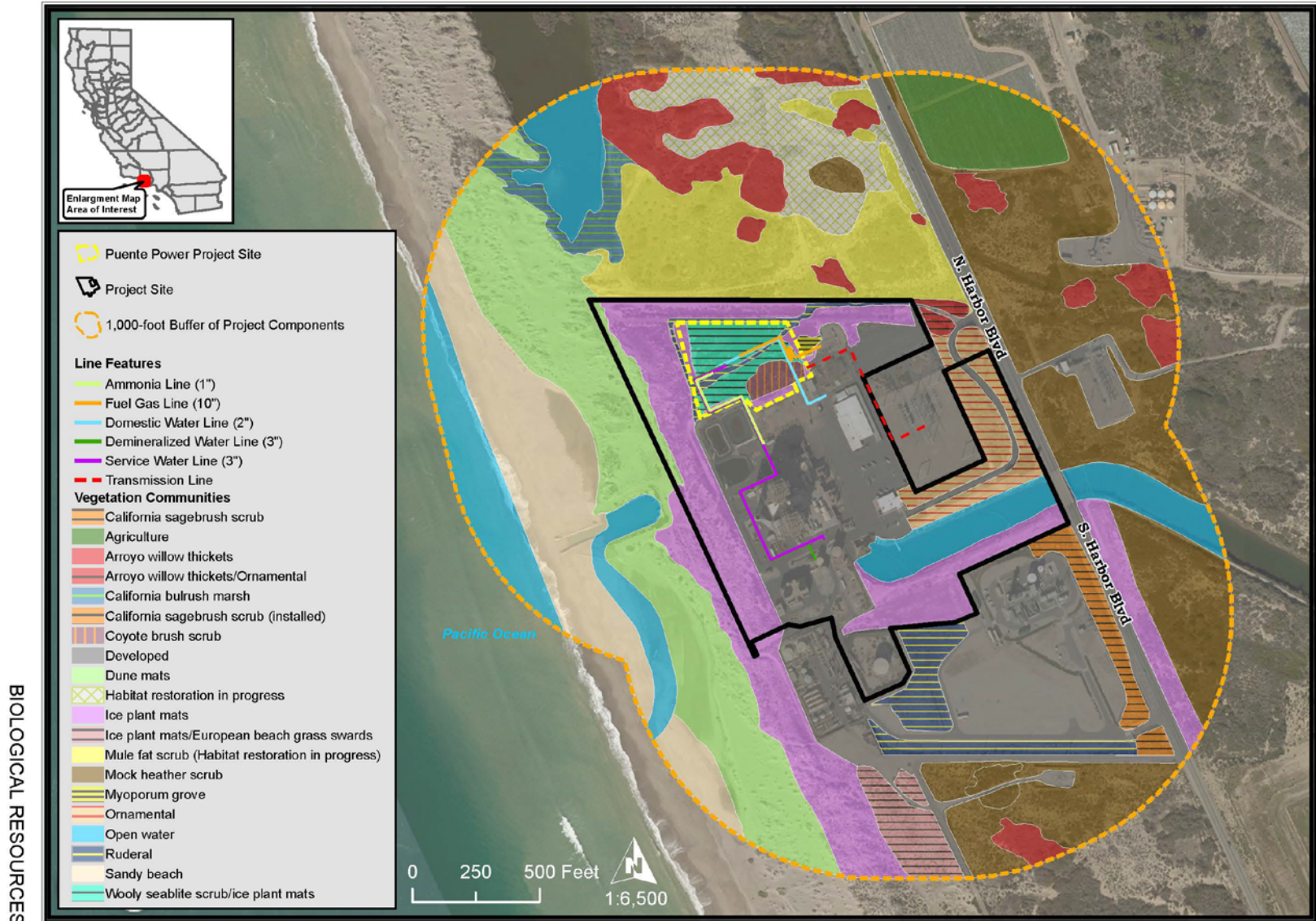
January 10, 2017
Puente FSA Workshop
Oxnard, CA



Overview of Onsite Biological Resources

- ▶ Project site has been historically disturbed, graded, and/or used for spoils storage for years.
- ▶ Contains few natural resources and primarily consists of degraded woolly seablite-ice plant mats.
- ▶ Situated adjacent sensitive habitat and wildlife, including USFWS-designated western snowy plover critical habitat to the west.
- ▶ Species occurring at the site are typically common species, acclimated to development (small rodents, lizards, and birds). There is also potential for less urbane species, primarily birds, to fly over the site, or perch on adjacent structures such as the Mandalay Bay Generating Station.

BIOLOGICAL RESOURCES - FIGURE 3
Puente Power Project FSA - Vicinity Vegetation



BIOLOGICAL RESOURCES

CALIFORNIA ENERGY COMMISSION, SITING, TRANSMISSION AND ENVIRONMENTAL PROTECTION DIVISION

SOURCE: Puente Power Project (P3) 15-AFC-01, Figure 2.7-8 and Figure 4.2-2, Bing Aerial, and ESRI.



Staff Analysis Modifications

Modifications from PSA to FSA – prompted by comments received, applicant’s project changes (removal of outfall structure and transmission line update), and additional analysis.

Primary modifications include:

- ▶ Avoidance of ESHA (100-foot buffer) and enhanced weed abatement on northern boundary of project (Condition **BIO-7**);
- ▶ Enhanced noise monitoring (Condition of Certification **BIO-8**);
- ▶ Increased wetland mitigation ratio (Condition **BIO-9**); and
- ▶ Added Condition of Certification **BIO-10**, to address potential impacts of removal of the ocean outfall structure.
- ▶ Conditions incorporate measures to comply with Fish & Game Code Sec. 1600.



Coastal Commission Wetlands

Coastal Commission Report recommends a 4:1 mitigation ratio.

- ▶ Considerations include:
 - Vegetation on the site historically included a mosaic of habitats and may indicate partial re-emergence of native species.
 - The difficulties inherent to restoration of wetland plants.
 - Mitigation results in different functions and values.

Wetlands Mitigation

- ▶ 2.03-acre wetland
- ▶ 4:1 mitigation ratio recommended in FSA
- ▶ =8.12 acres of compensatory wetlands (salt marsh or dune swale wetlands, based on CDFW input)



California Energy Commission

Questions / Comments?