

DOCKETED

Docket Number:	15-AFC-01
Project Title:	Puente Power Project
TN #:	215431-3
Document Title:	Exhibit - Salinity SCCOOS
Description:	N/A
Filer:	Lisa Belenky
Organization:	Center for Biological Diversity
Submitter Role:	Intervenor
Submission Date:	1/18/2017 3:12:36 PM
Docketed Date:	1/18/2017

Home (/) / Data & Products (/data/) / Automated Shore Stations

Automated Shore Stations

Santa Monica will be down until further notice.

Automated shore stations consist of a suite of sensors that are attached to piers at several locations along the California coast. These automated sensors measure temperature, salinity, chlorophyll, and water level at frequent intervals in the nearshore coastal ocean. This data can provide local and regional information on mixing and upwelling, land run-off, and algal blooms.

Latest Data

Time Legend: older than 30 mins

Auxiliary data

Stearns Wharf (./timeline/?main=single&station=stearns_wharf)

01/17/2017 14:11:34 -08:00 (Tue) Pacific Time
01/17/2017 22:11:34 UTC

temperature	14.4831 celsius
pressure	3.104 dbar
chlorophyll	5 ug/L
salinity	32.9487 1e-3

Santa Monica Pier (./timeline/?main=single&station=santa_monica_pier)

07/13/2015 05:55:42 -07:00 (Mon) Pacific Time

07/13/2015 12:55:42 UTC

temperature	19.1068 celsius
pressure	1.384 dbar
chlorophyll	0.7027 ug/L
salinity	32.939 1e-3

Newport Pier (./timeline/?main=single&station=newport_pier)

01/12/2017 02:11:10 -08:00 (Thu) Pacific Time

01/12/2017 10:11:10 UTC

temperature	15.1431 celsius
pressure	2.634 dbar
chlorophyll	0.1554 ug/L
salinity	33.0541 1e-3

Scripps Pier (./timeline/?main=single&station=scripps_pier)

01/17/2017 14:12:06 -08:00 (Tue) Pacific Time

01/17/2017 22:12:06 UTC

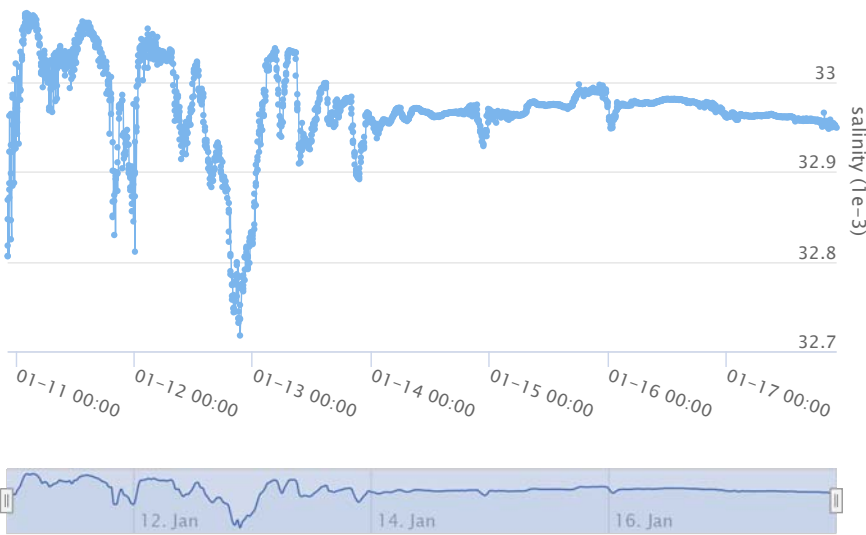
temperature	15.1859 celsius
pressure	3.718 dbar
chlorophyll	0.1333 ug/L
salinity	33.1747 1e-3

Stearns Wharf Santa Monica Pier Newport Pier Scripps Pier

Compare (./timeline/?main=multi&at

Attribute: Salinity

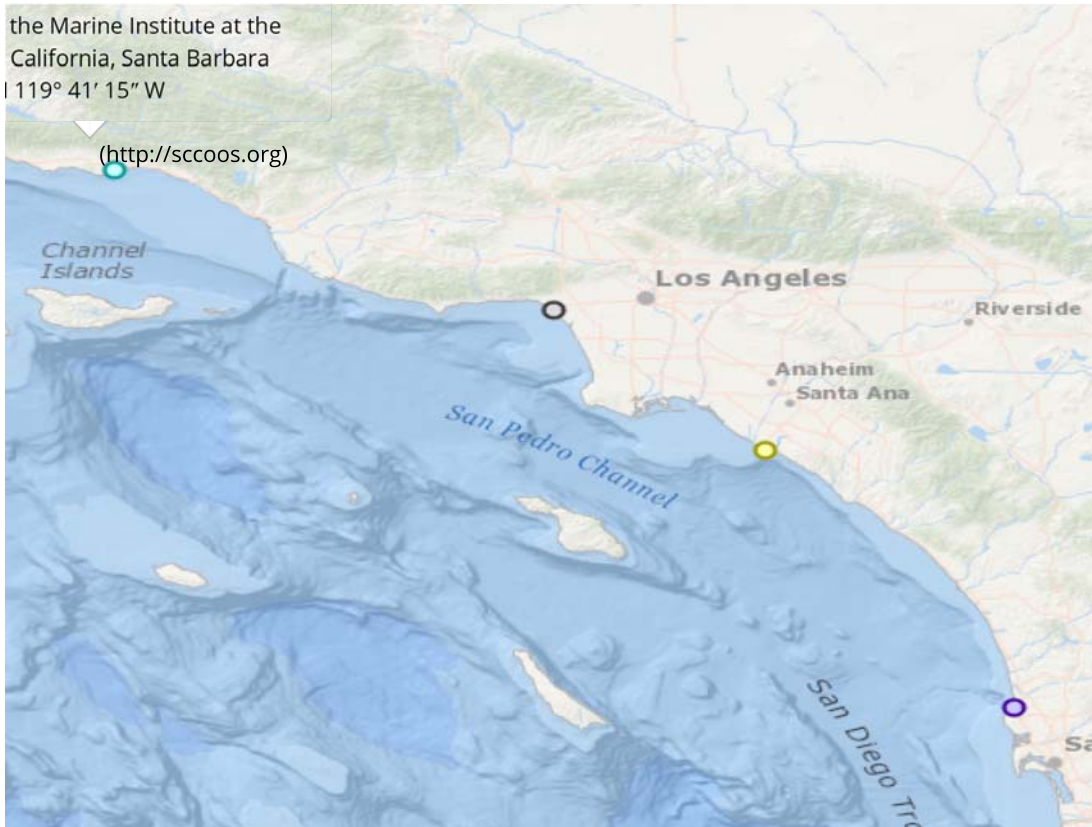
Zoom 6h 12h 1d 3d 1w



Quality Controlled

Download CSV ([http://sccoos.org/erddap/tabledap/autos.csvp?station,time,salinity&salinity_flagPrimary=1&station="stearns_wharf"&time>=2017-01-10T22:11:34.000Z&orderBy\(%22time%22\)\)](http://sccoos.org/erddap/tabledap/autos.csvp?station,time,salinity&salinity_flagPrimary=1&station='stearns_wharf'&time>=2017-01-10T22:11:34.000Z&orderBy(%22time%22))))

Data range available for this station: 09/16/2005 - 01/17/2017 [View More Data \(./timeline/?main=single&station=stearns_wharf\)](#)



Automated Shore Stations Program Profiles

Stearns Wharf

Operated and maintained by the Marine Institute at the University of California, Santa Barbara. The instrument package is mounted at a nominal depth of 2 meters Mean Lower Low Water (MLLW). Historical data has been collected continuously since August 16, 2005.

Santa Monica Pier

DECOMMISSIONED. Previously operated by the Scripps Institution of Oceanography (SIO) in collaboration with Institute of the Environment at the University of California, Los Angeles. The instrument package is mounted at a nominal depth of 2 meters MLLW. Historical data has been collected from April 4, 2005 to January 1, 2016.

Newport Pier

Operated by the Scripps Institution of Oceanography (SIO) in collaboration with Orange County Sanitation District. The instrument package is mounted at a nominal depth of 2 meters MLLW. Historical data has been collected continuously since February 10, 2005.

Scripps Pier

Operated by the Scripps Institution of Oceanography (SIO). The instrument package is mounted at a nominal depth of 5 meters MLLW. Historical data has been collected continuously since April 4, 2005.

Quality Control Documentation (<http://sccoos.org/about/dmac/autosqc/>)

Data Access is available in a number of formats and protocols

- THREDDS Data Server (<http://sccoos-obs0.ucsd.edu/thredds/SASS/catalog.html>)
- ERDDAP Data Server (<http://sccoos.org/erddap/index.html>)



(<http://www.nws.noaa.gov/com/weatherreadynation/>)



(<https://facebook.com/SCCOOS/>)

Copyright © 2017 Southern California Coastal Ocean Observing System