

DOCKETED

Docket Number:	15-AFC-01
Project Title:	Puente Power Project
TN #:	212741-5
Document Title:	Presentation - Preliminary Staff Assessment Land Use
Description:	PowerPoint presentations made by CEC staff at the July 21, 2016 public workshop, including Alternatives, Air Quality, Biology, Environmental Justice, Land Use, Public Health, and Soil & Water Resources.
Filer:	Patty Paul
Organization:	California Energy Commission
Submitter Role:	Commission Staff
Submission Date:	8/11/2016 12:07:09 PM
Docketed Date:	8/11/2016



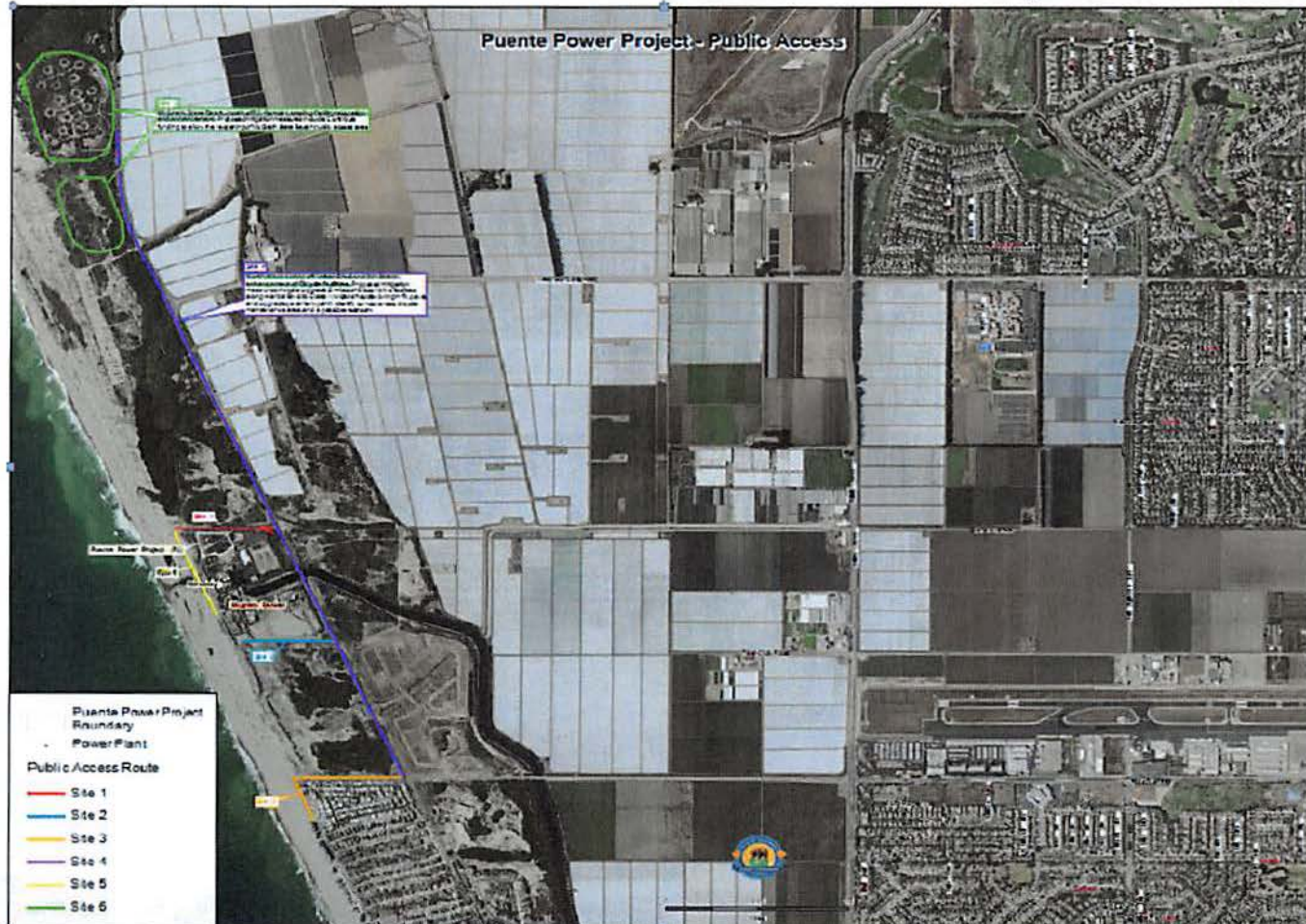
California Energy Commission

Puente Power Project Preliminary Staff Assessment Land Use

Ashley Gutierrez and Eric Knight



Public Access Options





Option 5

- Public use easement or dedication of land (1,800 linear feet of beach frontage)
- Walkway or boardwalk linking McGrath State Beach and Mandalay Beach City/County Park
- Educational signs delineating sensitive habitat areas
- Trash cans
- Routine Maintenance





California Energy Commission

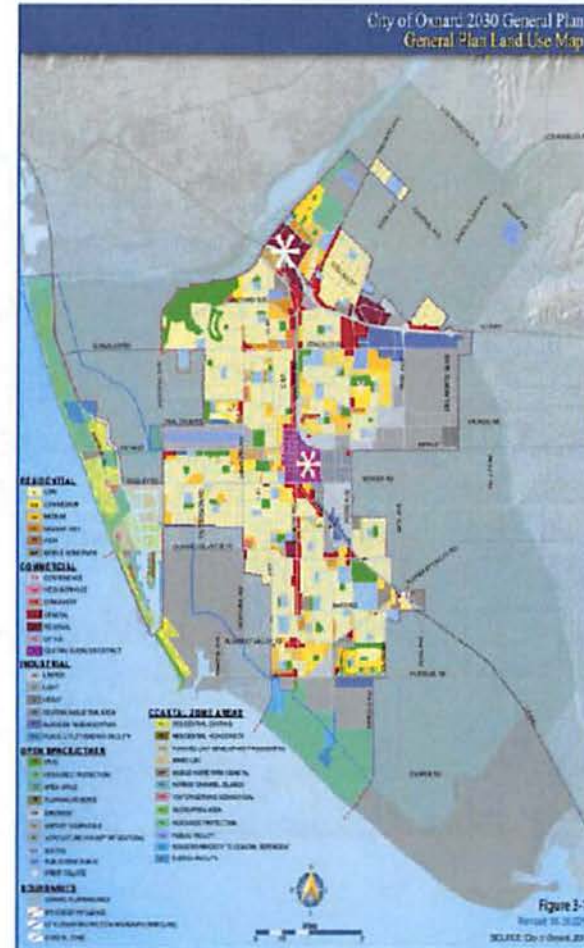
CITY OF OXNARD 2030 GENERAL PLAN MAP

Open Space/Other

- PK** Park
- RP** Resource Protection
- OS** Open Space
- PR** Planning Reserve
- EW** Easement
- AC** Airport Compatible
- AG** Agriculture (County Of Ventura)
- SC** School
- PS** Public/Semi Public
- EF** Energy Facility
- UV** Urban Village

Coastal Zone Areas

- REX** Residential Existing
- RHD** Residential High Density
- PLD** Planned Unit Development Residential
- MU** Mixed Use
- MHP** Mobile Home Park Coastal
- HC** Harbor Channel Islands
- VSC** Visitor Serving Commercial
- REA** Recreation Area
- RP** Resource Protection
- PLB** Public Facility
- ICD** Industry Priority To Coastal Dependent
- PLU** Public Utility/Energy Facility





2030 General Plan Amendment

Direct Impacts:

- Conflict with local LORS (2030 General Plan June 2016 Amendment).
- General Plan Amendments will be fully analyzed and addressed by staff in the Final Staff Assessment.