

## DOCKETED

<b>Docket Number:</b>	93-AFC-02C
<b>Project Title:</b>	Compliance - Application for Certification SMUD's Proctor & Gamble Cogeneration Project
<b>TN #:</b>	203734
<b>Document Title:</b>	Data Response, Set 1B (Response to Emailed Cultural Resources Data Request)
<b>Description:</b>	Addition of an Auxiliary Boiler and Associated Facilities, Procter & Gamble Project
<b>Filer:</b>	Dale Rundquist
<b>Organization:</b>	Sacramento Cogeneration Authority
<b>Submitter Role:</b>	Applicant
<b>Submission Date:</b>	2/24/2015 1:15:46 PM
<b>Docketed Date:</b>	2/24/2015

---

# **Addition of an Auxiliary Boiler and Associated Facilities, Procter & Gamble Project**

**(93-AFC-2C)**

**Data Response, Set 1B  
(Response to Emailed Cultural  
Resources Data Request)**

Submitted to the  
**California Energy Commission**

Submitted by  
**Sacramento Cogeneration Authority**

February 24, 2015

With Assistance from  
**CH2MHILL**  
2485 Natomas Park Drive  
Suite 600  
Sacramento, CA 95833

# Contents

---

<b>Section</b>	<b>Page</b>
<b>Introduction</b> .....	<b>1</b>
<b>Cultural Resources (12)</b> .....	<b>2</b>

## **Figures**

Figure 12-1	Location of Boiler 1B
Figure 12-2	Boiler 1B
Figure 12-3N	Boiler Room - North Elevation
Figure 12-3S	Boiler Room - South Elevation
Figure 12-3E	Boiler Room - East Elevation
Figure 12-3W	Boiler Room - West Elevation
Figure 12-4	Roll-up Door to be Removed
Figure 12-5	Inside Entry Door
Figure 12-6	Inside Entry Door & Left-side of Roll-up Door
Figure 12-7	Boiler Work Area
Figure 12-8	Boiler Work Area
Figure 12-9	Ceiling above Boiler 1B
Figure 12-10	Ceiling above Boiler 1B
Figure 12-11	Ceiling above Boiler 1B

# Introduction

---

Attached are the Sacramento Cogeneration Authority's (SCA) responses to the California Energy Commission (CEC) Staff's Cultural Resources data requests emailed on February 5, 2015 for the SCA Procter & Gamble Petition to Amend (93-AFC-2C).

Graphics are numbered in reference to the data request number. For example, the first figure used in response to Data Request 12 is Figure 12-1, and so on.

# Cultural Resources

---

## Data Request:

12. Cultural staff needs to see photographs of the “Old Boiler House” at the old Campbell’s Soup facility. The photographs will need to be all elevations of the building, the roll-up door, the interior and the roof. Photographs will need to include all areas where work will be required to remove the Boiler 1B as outlined in the Data Response to Data Requests 5 and 6, found on pages 3 and 4 of the Data Responses.

Or could a site visit be arranged at the old Campbell Soup facility so staff could see the above information firsthand?

**Response:** An aerial photograph showing the location of the building in which Boiler 1B is located at the former Campbell Soup facility is provided as Figure 12-1. A photo of Boiler 1B inside the building, in its current location, is provided as Figure 12-2. Photos showing the building elevation are provided as Figure 12-3N (north elevation), Figure 12-3S (south elevation), Figure 12-3E (east elevation), and Figure 12-3W (west elevation). Figure 12-4 shows the exterior of the roll-up door and side entrance door that will be removed. Figure 12-5 and 12-6 are interior photos of the entrance door and adjacent roll-up door. Figures 12-7 and 12-8 are photos of the working area around the boiler. Figures 12-9 through 12-11 are photos of the ceiling area above Boiler 1B.

After reviewing these photos, please let us know if you would like us to arrange a site visit.

**Figures**

---

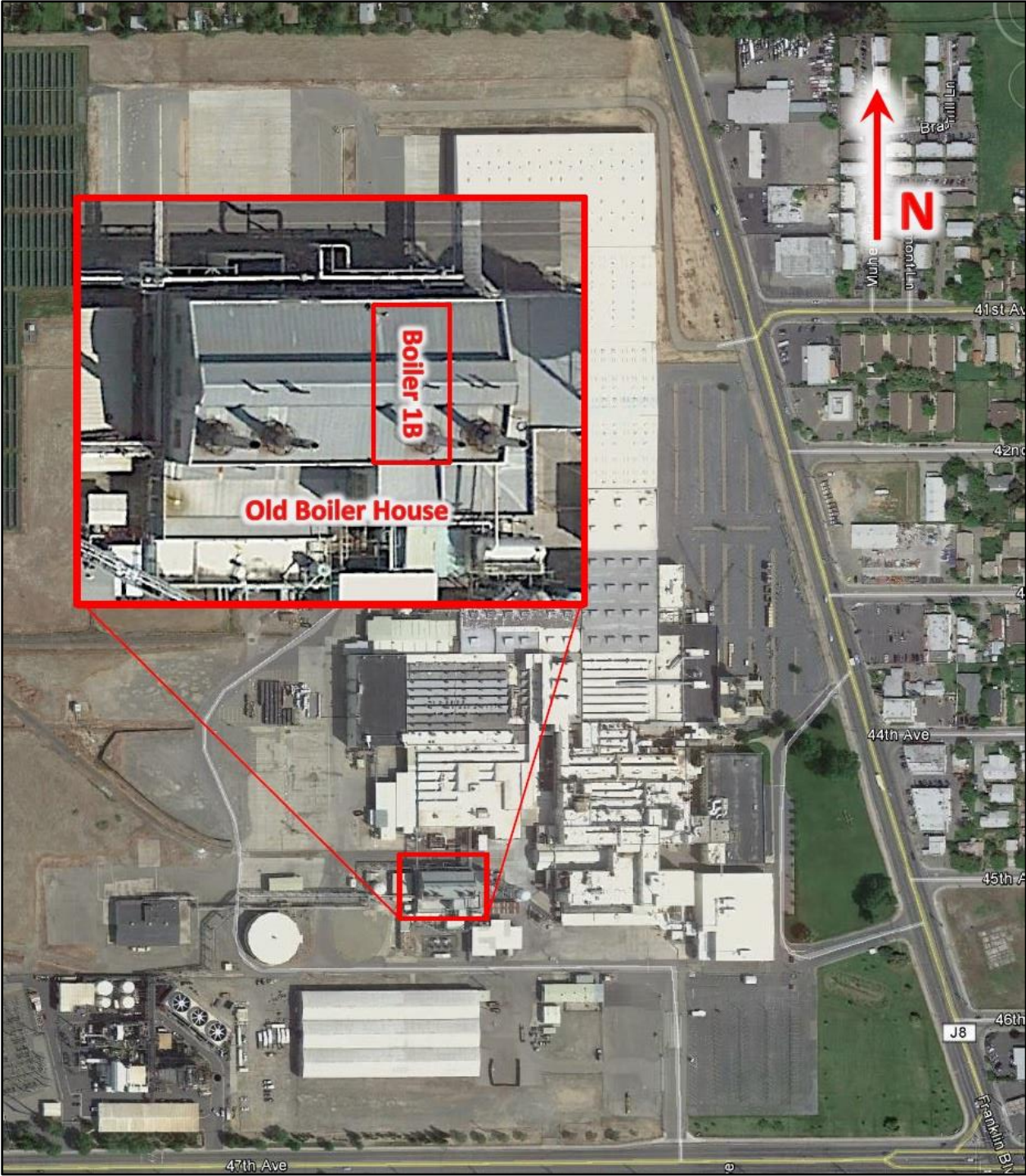


Figure 12-1. Location of Boiler 1B





Figure 12-2. Boiler 1B





Figure 12-3N. Boiler Room - North Elevation



Figure 12-3S. Boiler Room - South Elevation



Figure 12-3E. Boiler Room - East Elevation





Figure 12-3W. Boiler Room - West Elevation



Figure 12-4. Roll-up Door to be Removed





Figure 12-5. Inside Entry Door





Figure 12-6. Inside Entry Door & Left-side Roll-up Door



Figure 12-7. Boiler Work Area



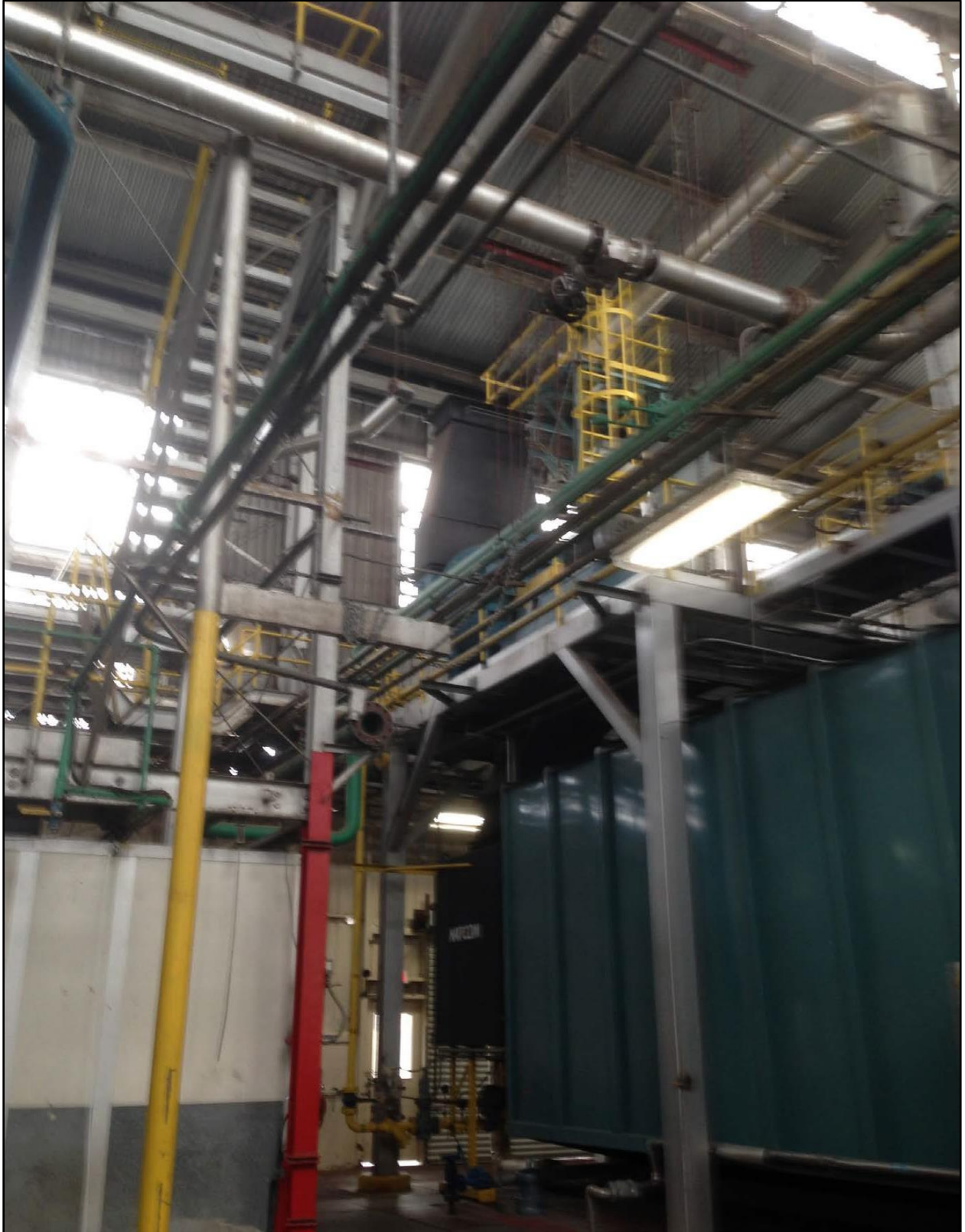


Figure 12-8. Boiler Work Area



Figure 12-9. Ceiling Above Boiler IB



Figure 12-10. Ceiling Above Boiler





Figure 12-11. Ceiling Above Boiler IB