

DOCKETED	
Docket Number:	23-SB-02
Project Title:	SB X1-2 Implementation
TN #:	270508
Document Title:	Resupply Requirements for Planned Refinery Turnarounds Presentation by Dave Hackett
Description:	Resupply Requirements for Planned Refinery Turnarounds Presentation by Dave Hackett for the Transportation Fuels Reliability Assessment Workshop on June 8 2026
Filer:	Isabella Bianchi
Organization:	Stillwater Associates LLC
Submitter Role:	Commission Staff
Submission Date:	6/10/2026 3:37:17 PM
Docketed Date:	6/10/2026



Resupply Requirements for Planned Refinery Turnarounds

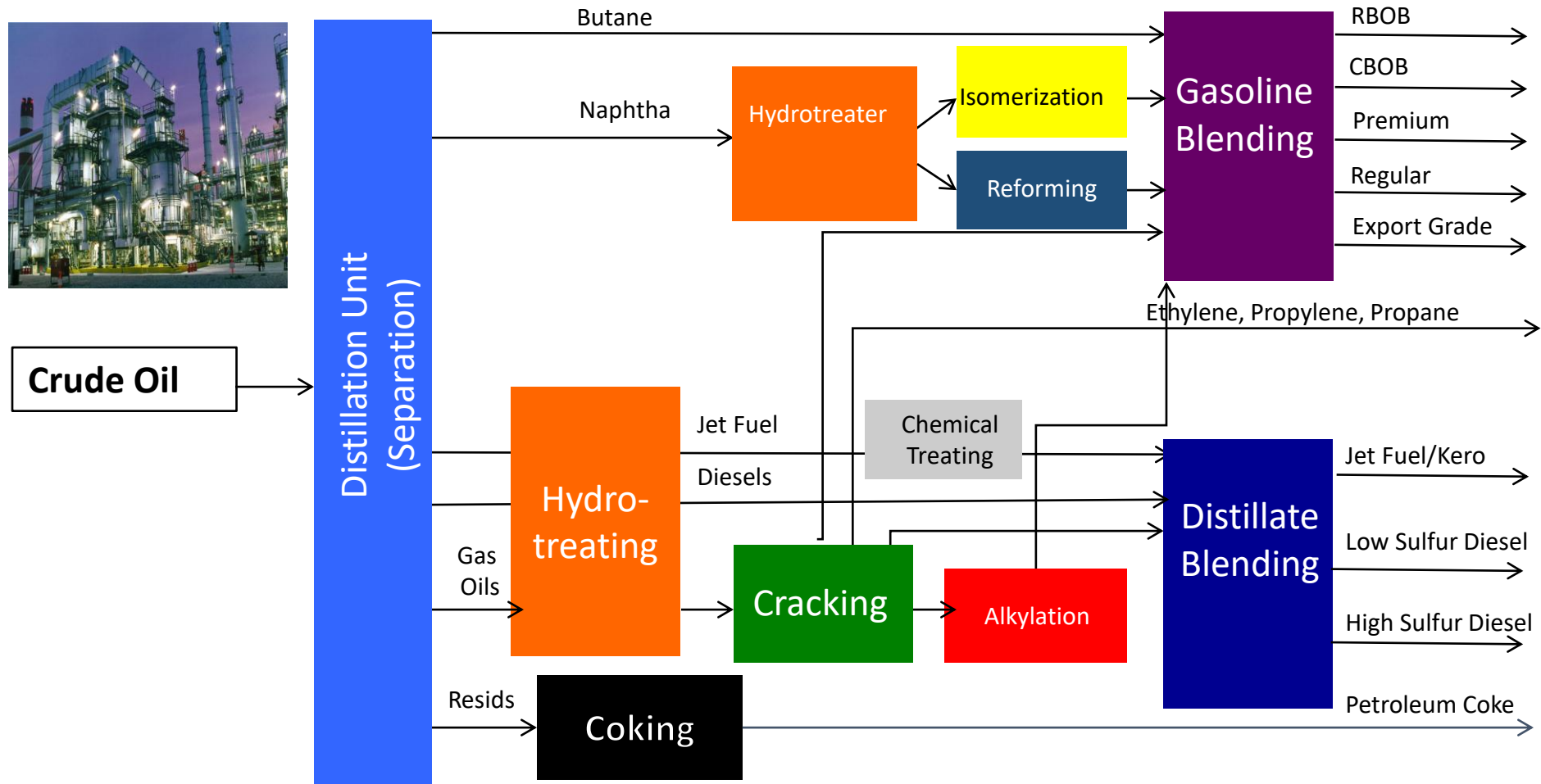
Prepared for the California Energy Commission
June 8, 2026



How do refiners supply
their customers when
the refinery is in
turnaround?



Oil refineries are complex machines



The industry term for planned refinery maintenance is “turnaround”.

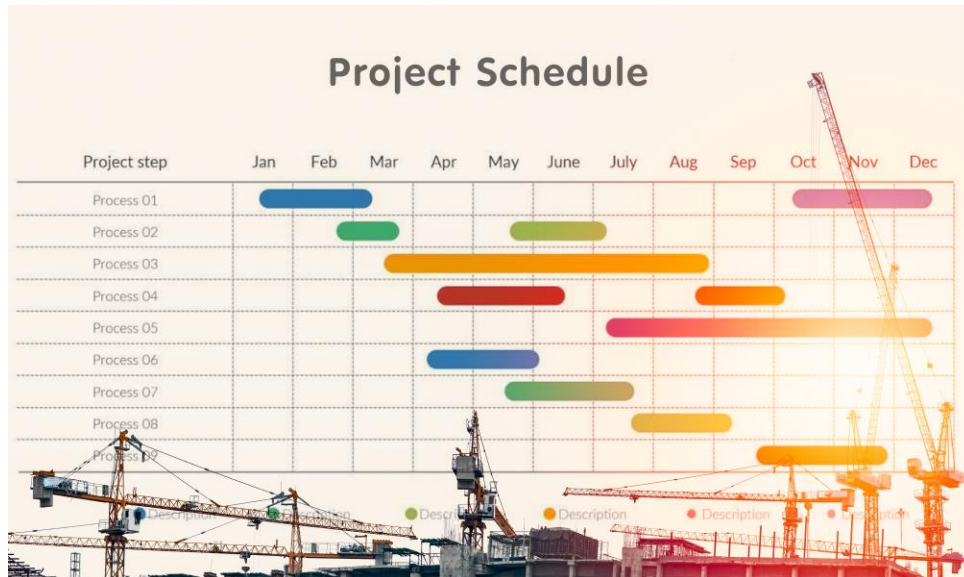
1. All refinery processing units require routine maintenance.
 - a. A process unit down for planned maintenance is said to be in turnaround.
 - b. The turnaround cycle can vary from a few months to 5+ years, depending on permitting, operating severity, unit performance, etc.
 - c. Normally the maintenance of separate units is grouped together.
2. A major turnaround will bring down the crude unit, catalytic cracker, hydrocracker, and or/coker. These are on a 3–5-year cycle.
 - a. The duration is often 5-7 weeks for a major turnaround.
 - b. Planning for a major turnaround starts 18 to 24 months in advance.



Source: Aegion Energy Services

Schedules for turnaround timing & duration are established well in advance.

1. Refiners time turnarounds for the slack demand season.
 - a. In California, slack demand season is January to March and October/November.
2. Refiners should not coordinate the timing of turnarounds with their competitors because of anti-trust concerns.
3. Maintenance contractors frequently coordinate the timing because their people and equipment will be working at several refineries at the same time.
4. As part of turnaround planning, refiners plan to replace lost contracted gasoline production by scheduling additional supply through inventory build, purchases from other refineries, and/or imports.



The companies have contracts to supply their customers

It is the job of the Supply Department to cover those contracts while the refinery is down for maintenance



Because of the planned resupply to meet their contracts, turnarounds are not a major driver of gasoline price volatility



Stillwater Associates®
...experience runs deep

Thank you.
Questions?