

DOCKETED

Docket Number:	26-OPT-01
Project Title:	Vaca Dixon Power Center Project
TN #:	270296
Document Title:	Revised Appendix P Simulated Views_VDPC
Description:	Updated appendix, incorporating responses included in Data Request Response Set #1.
Filer:	Adam Morrison
Organization:	Rincon Consultants, Inc.
Submitter Role:	Applicant Consultant
Submission Date:	5/27/2026 12:27:24 PM
Docketed Date:	5/27/2026

Appendix P

Simulated Views

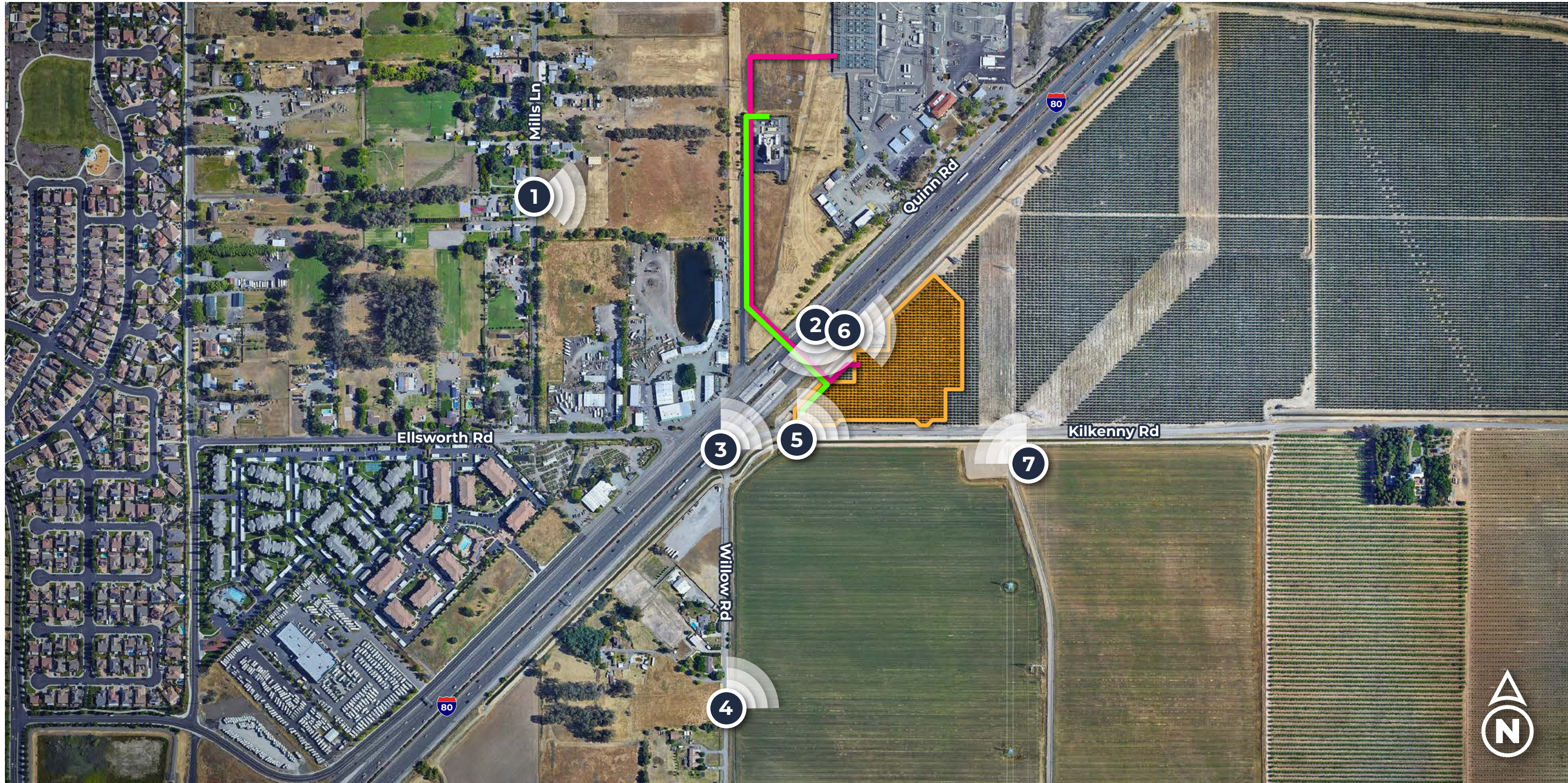
VACA DIXON

POWER CENTER PROJECT

- ① Viewpoint Location
- Vaca Arges BESS Site
- Vaca Dixon Gen-Tie
- Arges Gen-Tie

Visualization is for discussion purposes only.
Final design is subject to change pending
engineering and regulatory review.

Vaca Dixon BESS LLC
Arges BESS LLC



VACA DIXON

POWER CENTER PROJECT

VIEWPOINT 1

1/22/2025 · 2:47 pm · Looking East



- ① Viewpoint Location
- Vaca Arges BESS Site
- Vaca Dixon Gen-Tie
- Arges Gen-Tie

Photo simulations are for discussion purposes only.
Final design is subject to change pending public,
engineering, and regulatory review.

Vaca Dixon BESS LLC
Arges BESS LLC



EXISTING CONDITIONS



PROPOSED CONDITIONS 1 YEAR GROWTH

VACA DIXON

POWER CENTER PROJECT

VIEWPOINT 1

1/22/2025 • 2:47 pm • Looking East



- 1 Viewpoint Location
- Vaca Arges BESS Site
- Vaca Dixon Gen-Tie
- Arges Gen-Tie

Photo simulations are for discussion purposes only. Final design is subject to change pending public, engineering, and regulatory review.

Vaca Dixon BESS LLC
Arges BESS LLC



EXISTING CONDITIONS



115 kV Arges Gen-Tie Line

13.8 kV Vaca Dixon Gen-Tie Line

PROPOSED CONDITIONS

OVERLAY

1 YEAR GROWTH

Objects displayed in yellow will be fully or partially obscured by terrain and vegetation.

VACA DIXON

POWER CENTER PROJECT

VIEWPOINT 1

1/22/2025 · 2:47 pm · Looking East



- ① Viewpoint Location
- Vaca Arges BESS Site
- Vaca Dixon Gen-Tie
- Arges Gen-Tie

Photo simulations are for discussion purposes only.
Final design is subject to change pending public,
engineering, and regulatory review.

Vaca Dixon BESS LLC
Arges BESS LLC



EXISTING CONDITIONS



PROPOSED CONDITIONS 5 YEAR GROWTH

VACA DIXON

POWER CENTER PROJECT

VIEWPOINT 1

1/22/2025 • 2:47 pm • Looking East



- ① Viewpoint Location
- Vaca Arges BESS Site
- Vaca Dixon Gen-Tie
- Arges Gen-Tie

Photo simulations are for discussion purposes only.
Final design is subject to change pending public,
engineering, and regulatory review.

Vaca Dixon BESS LLC
Arges BESS LLC



EXISTING CONDITIONS



115 kV Arges Gen-Tie Line

13.8 kV Vaca Dixon Gen-Tie Line

PROPOSED CONDITIONS

OVERLAY

5 YEAR GROWTH

Objects displayed in yellow will be fully or partially obscured by terrain and vegetation.







VACA DIXON

POWER CENTER PROJECT

VIEWPOINT 2

8/14/2025 · 9:18 am · Looking South



- ② Viewpoint Location
- Vaca Arges BESS Site
- Vaca Dixon Gen-Tie
- Arges Gen-Tie

Photo simulations are for discussion purposes only.
Final design is subject to change pending public,
engineering, and regulatory review.

Vaca Dixon BESS LLC
Arges BESS LLC



EXISTING CONDITIONS



PROPOSED CONDITIONS 1 YEAR GROWTH

VACA DIXON

POWER CENTER PROJECT

VIEWPOINT 2

8/14/2025 · 9:18 am · Looking South



- ② Viewpoint Location
- Vaca Arges BESS Site
- Vaca Dixon Gen-Tie
- Arges Gen-Tie

Photo simulations are for discussion purposes only.
Final design is subject to change pending public,
engineering, and regulatory review.

Vaca Dixon BESS LLC
Arges BESS LLC



EXISTING CONDITIONS



PROPOSED CONDITIONS 5 YEAR GROWTH

AD SPACE
916-698-7526



AD SPACE
916-698-7526



AD SPACE
916-698-7526



VACA DIXON

POWER CENTER PROJECT

VIEWPOINT 3

8/14/2025 · 9:29 am · Looking Northeast



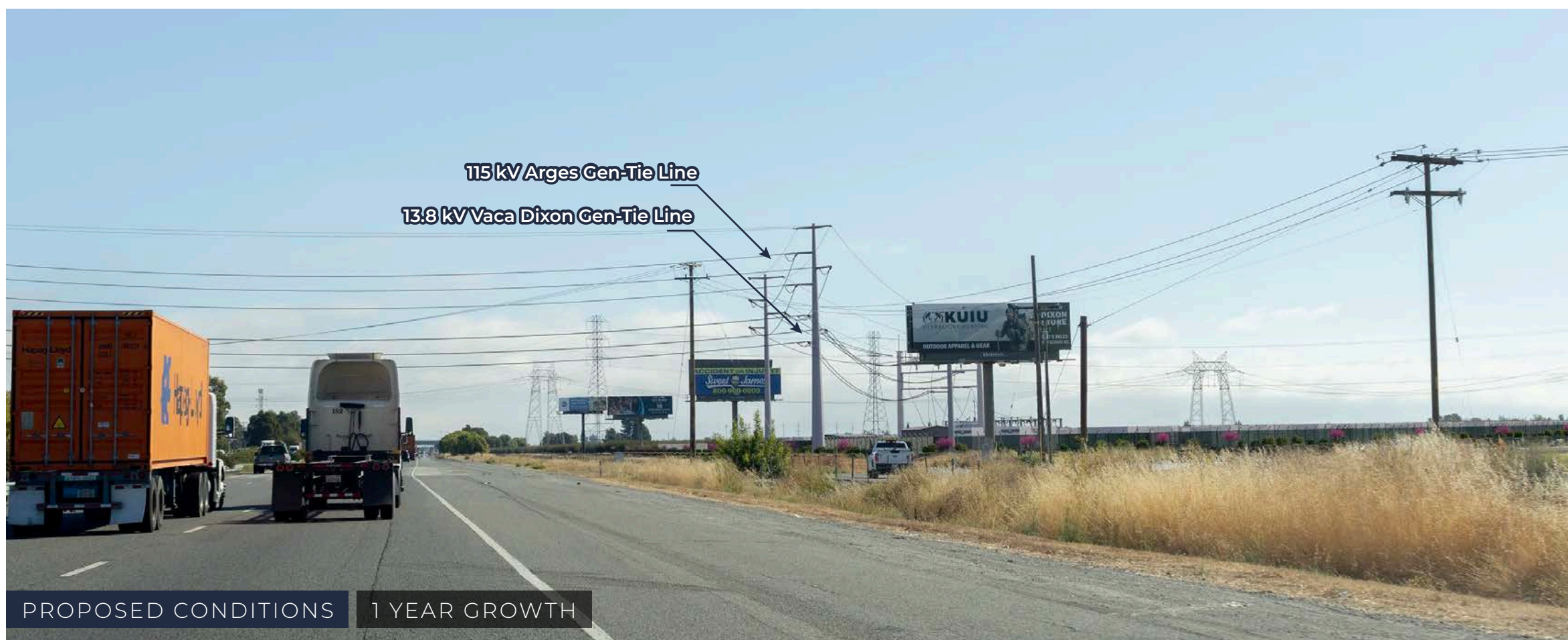
- 3 Viewpoint Location
- Vaca Arges BESS Site
- Vaca Dixon Gen-Tie
- Arges Gen-Tie

Photo simulations are for discussion purposes only.
Final design is subject to change pending public,
engineering, and regulatory review.

Vaca Dixon BESS LLC
Arges BESS LLC



EXISTING CONDITIONS



PROPOSED CONDITIONS 1 YEAR GROWTH



EXISTING CONDITIONS



PROPOSED CONDITIONS 5 YEAR GROWTH

VACA DIXON

POWER CENTER PROJECT

VIEWPOINT 3

8/14/2025 · 9:29 am · Looking Northeast



- 3 Viewpoint Location
- Vaca Arges BESS Site
- Vaca Dixon Gen-Tie
- Arges Gen-Tie

Photo simulations are for discussion purposes only.
Final design is subject to change pending public, engineering, and regulatory review.

Vaca Dixon BESS LLC
Arges BESS LLC





COIDENTERMINAU
Sweet & Lense
800-944-0000

KUIU
OUTDOOR APPAREL & GEAR
DIXON
STRIKE
BIRCH
P. 1000000000





COIDENTERMINAU
Sweet & Luscious
800-944-0000

KUIU
OUTDOOR APPAREL & GEAR

DIXON
SHIRTS
800-944-0000





EXISTING CONDITIONS



PROPOSED CONDITIONS 1 YEAR GROWTH

VACA DIXON

POWER CENTER PROJECT

VIEWPOINT 4

8/14/2025 · 9:44 am · Looking Northeast



- 4 Viewpoint Location
- Vaca Arges BESS Site
- Vaca Dixon Gen-Tie
- Arges Gen-Tie

Photo simulations are for discussion purposes only. Final design is subject to change pending public, engineering, and regulatory review.

Vaca Dixon BESS LLC
Arges BESS LLC



EXISTING CONDITIONS



PROPOSED CONDITIONS 5 YEAR GROWTH

VACA DIXON

POWER CENTER PROJECT

VIEWPOINT 4

8/14/2025 · 9:44 am · Looking Northeast



- 4 Viewpoint Location
- Vaca Arges BESS Site
- Vaca Dixon Gen-Tie
- Arges Gen-Tie

Photo simulations are for discussion purposes only. Final design is subject to change pending public, engineering, and regulatory review.

Vaca Dixon BESS LLC
Arges BESS LLC





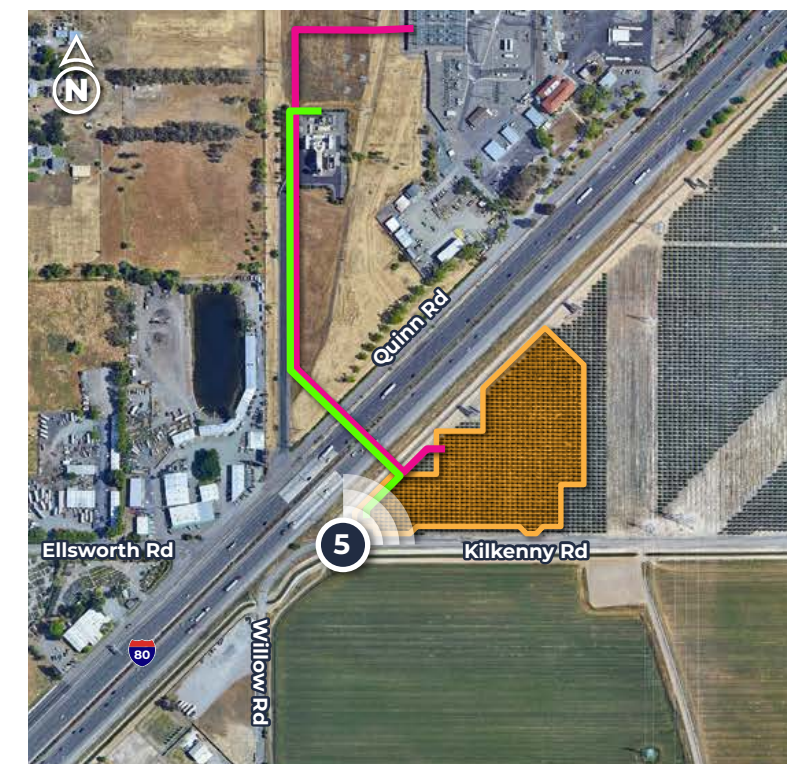


VACA DIXON

POWER CENTER PROJECT

VIEWPOINT 5

3/12/2026 · 3:27 pm · Looking Northeast



- 5 Viewpoint Location
- Vaca Arges BESS Site
- Vaca Dixon Gen-Tie
- Arges Gen-Tie

Photo simulations are for discussion purposes only.
Final design is subject to change pending public,
engineering, and regulatory review.

Vaca Dixon BESS LLC
Arges BESS LLC



EXISTING CONDITIONS



PROPOSED CONDITIONS 1 YEAR GROWTH

WAS A TRUCK • BIKE CRASH?
Sweet James
800-300-0000
©2011 Sweet James LLC





EXISTING CONDITIONS



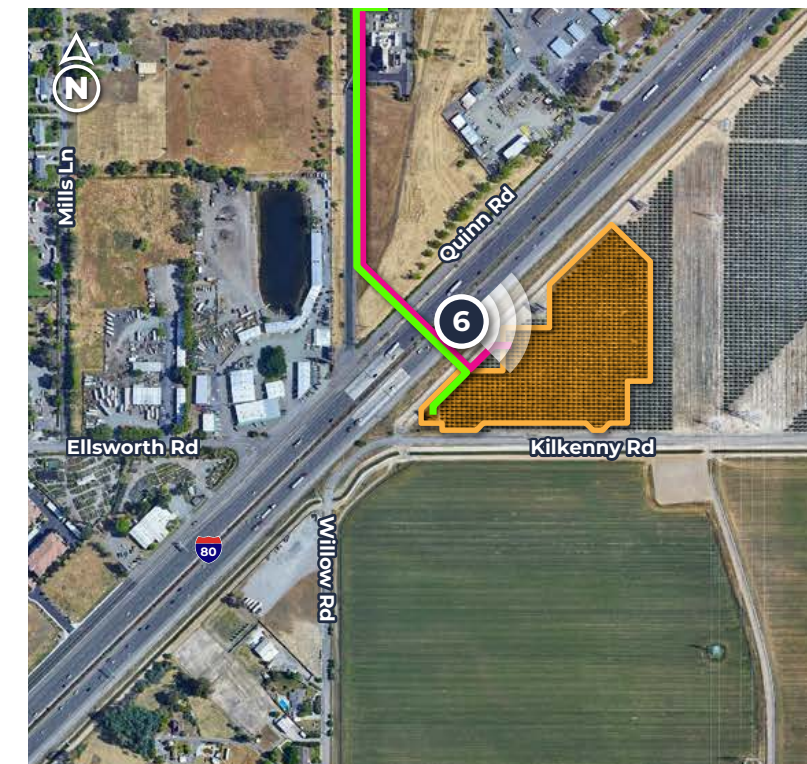
PROPOSED CONDITIONS 1 YEAR GROWTH

VACA DIXON

POWER CENTER PROJECT

VIEWPOINT 6

3/12/2026 · 3:09 pm · Looking East



- 6 Viewpoint Location
- Vaca Argos BESS Site
- Vaca Dixon Gen-Tie
- Argos Gen-Tie

Photo simulations are for discussion purposes only.
Final design is subject to change pending public,
engineering, and regulatory review.

Vaca Dixon BESS LLC
Argos BESS LLC

• BIKE CRASH?
St James
900-0000
California • Los Angeles • Sweet James LLP
CLEAR CHANNEL



K • BIKE CRASH?
St James
900-0000
California • Los Angeles • Street James LLP
CLEAR CHANNEL





EXISTING CONDITIONS

VACA DIXON

POWER CENTER PROJECT

AERIAL VIEWPOINT 7

3/20/2026 · 12:52 pm · Looking Northwest



- ⑦ Viewpoint Location
- Vaca Arges BESS Site
- Vaca Dixon Gen-Tie
- Arges Gen-Tie

Photo simulations are for discussion purposes only.
Final design is subject to change pending public,
engineering, and regulatory review.

Vaca Dixon BESS LLC
Arges BESS LLC



PROPOSED CONDITIONS | 1 YEAR GROWTH

VACA DIXON

POWER CENTER PROJECT

AERIAL VIEWPOINT 7

3/20/2026 · 12:52 pm · Looking Northwest



- ⑦ Viewpoint Location
- Vaca Dixon Gen-Tie
- Vaca Arges BESS Site
- Arges Gen-Tie

Photo simulations are for discussion purposes only.
Final design is subject to change pending public,
engineering, and regulatory review.

Vaca Dixon BESS LLC
Arges BESS LLC



A



B

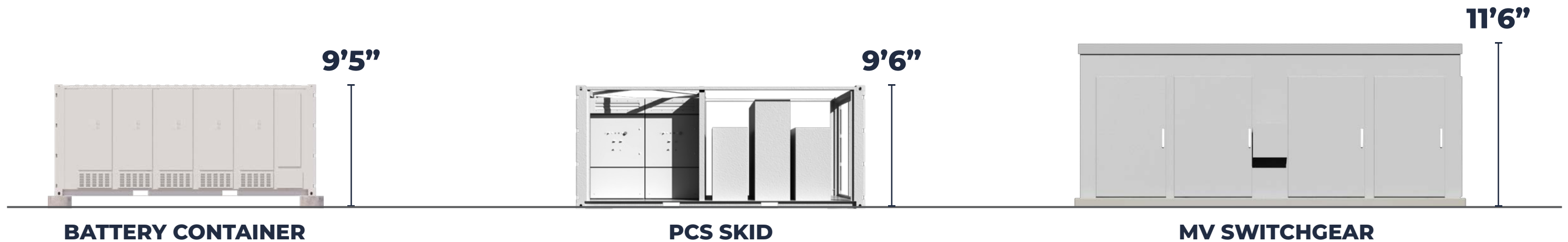


C



D





Appendix A

FHWA Rating Forms

Visual Resource Survey:		
Viewpoint: KOP #1	Key View:	
Date: 1/22/25	Existing Conditions	
Description: Representative view of residences on Mills Lane		
Photo Orientation: Northeast		
Viewer Position: _____ Inferior <input checked="" type="checkbox"/> Level _____ Superior		
View	Notes (describe existing conditions)	
Foreground (0 - 1/2 mile)	The foreground includes light green turf grass bounded by brown and black fence posts with grey barbed wire strung between. Beyond the green fields there is a field of light grey-brown dry grasses and brush and more grey barbed wire fencing strung between wooden fence posts. Beyond the dry brush there are utility lines strung between a series of brown wooden utility poles and tall grey metal lattice steel towers with lines overhead, all of which interrupt and clutter the skyline. The foreground beyond the utility lines includes views of large white and cream colored industrial buildings with metallic features. There are also tall	
Middleground (1/2 - 4 miles)	The middleground is not visible from this point due to intervening features in the foreground, such as large trees in the foreground and industrial structures.	
Background (> 4 miles)	The background is not visible from this point due to intervening features in the foreground, such as large trees and industrial structures.	
Vividness		
Feature	Score*	Notes (describe existing conditions)
Landform	1	There are no prominent landforms visible from KOP #1. The topography is flat.
Vegetation	4	There are mature trees and various grasses and shrubs visible throughout the frame. The leafless deciduous trees and shrubs do not contrast highly with the surrounding landscape, while the evergreen trees provide solid, soft masses of deep green which are contrasted against the sky. The overall landscape is not distinct or unique from others in the vicinity.
Water Feature		There are no water features visible from KOP #1.
Human-Made	4	Manmade features including fences, utility poles and lattice steel towers, overhead utility infrastructure (i.e. gen-tie and distribution lines), and industrial buildings (VDPP) are skylined and prominent within the frame, and highly visible beyond the existing vegetation in the foreground.
Overall	3.0	
Intactness		
Overall	3	The human-made features visible from this location clutter the view and do not enhance its existing character. The view is not intact due to human-made features present throughout the view which are incompatible with the natural features of the landscape.
Unity		
Overall	3	The view from KOP 1 is not visually coherent, and natural and built elements compete for dominance within the view. The foreground view up to the horizon line is rural in nature with visually consistent swaths of turf. The dry brush and scattered trees provide a transition from the open, rural landscape into the developed buildings and infrastructure beyond the vegetated areas. The existing utility infrastructure and the VDPP structures visible above the horizon line detract from the landscape features and are not harmonious or balanced.
Overall Visual Quality Score	3.0	

*Score Key:

1 - Very Low; 2 - Low; 3 - Moderately Low; 4 - Average; 5 - Moderately High; 6 - High; 7 - Very High

Visual Resource Survey:		
Viewpoint: KOP #1	Key View:	
Date: 1/22/25	With Project	
Description: Representative view of residences on Mills Lane		
Photo Orientation: Northeast		
Viewer Position: _____ Inferior <input checked="" type="checkbox"/> Level _____ Superior		
View	Notes (change from existing conditions)	
Foreground (0 - 1/2 mile)	The foreground with the project is minimally changed. The existing vegetation, fencing, and structures remain visible. The proposed project introduces additional grey metal poles and utility lines, but these match in color and scale to the existing lines visible from this location.	
Middleground (1/2 - 4 miles)	The Project does not change the condition of the middleground view.	
Background (> 4 miles)	The Project does not change the condition of the background view.	
Vividness		
Feature	Score*	Notes (change from existing conditions)
Landform	1	There are no prominent landforms visible from KOP #1. The topography is flat.
Vegetation	4	There would be no or minimal changes to vegetation visible from KOP #1.
Water Feature		There are no water features visible from KOP #1.
Human-Made	3	The proposed project would introduce additional human-made features with distinct horizontal and vertical linear elements which would contrast highly against the sky and present as a prominent feature within the view. These features would be similar in form and function as existing infrastructure present within the view; however, proposed gen-tie adds human-made features into the existing landscape which clutter the view and compete for visual dominance.
Overall	2.7	
Intactness		
Overall	2.5	The proposed gen-tie is highly visible and further reduces the intactness of the view.
Unity		
Overall	2.5	The proposed project would introduce additional human-made features which compete for dominance within the view and detract from landscape features.
Overall Visual Quality Score	2.6	

*Score Key:

1 - Very Low; 2 - Low; 3 - Moderately Low; 4 - Average; 5 - Moderately High; 6 - High; 7 - Very High

Visual Resource Survey:		
Viewpoint:	KOP #2	Key View:
Date:	8/14/25	Existing Conditions
Description:	Representative view of westbound motorist on I-80.	
Photo Orientation:	South	
Viewer Position:	_____ Inferior <u> X </u> Level _____ Superior	
View	Notes (describe existing conditions)	
Foreground (0 - 1/2 mile)	The foreground of the view is dominated by linear human-made elements, including a three-lane highway with black asphalt painted with yellow and white road markings and a metallic steel guardrail. Tufts of green shrub vegetation growing up around the guardrail separate, and largely obscure, the roadway and traffic coming the opposite direction. Beyond the roadway on the left side of the image there are rows of orchards characterized by mid-sized, uniform green trees. A tall rectangular billboard is prominent near the center of the image with red, white, and black writing highly contrasted against the sky. Right of the billboard, the tan finish of a small building is complementary to the surrounding brown and tan grasses. Existing utility lines strung between tall wooden poles are visible as a series of continuous lines strung across the image: behind the orchard, over the building, and over I-80 before disappearing off the right side of the frame. The utility lines and top crossbars of the utility poles are skylined.	
Middleground (1/2 - 4 miles)	The middleground is made up of tall, skylined evergreen trees visible across the center and on the left side of the frame. Green street signs and metal street sign support structures are faintly visible on the right side of the frame.	
Background (> 4 miles)	Hazy hillsides dotted with dark patches of vegetation are visible in the distant background along the right side of the image; a short peek of the hills is also present below the billboard.	
Vividness		
Feature	Score*	Notes (describe existing conditions)
Landform	2.5	Views of distant hillsides in the background are mostly obscured by man-made features and vegetation. The middle and foreground have flat topography.
Vegetation	3	Vegetation in the foreground is broken up by linear human-made features. The orchards on the left side of the image present as a solid green line, and are typical of the area. Large trees in the middleground are nondescript. The vegetation forms diffuse dotting which moderately contrasts with the distant hillsides and skyline.
Water Feature		There are no water features visible from KOP #2.
Human-Made	4	The view is cluttered with several human-made features, including asphalt roads, various colored signs, and existing utility infrastructure. These features are not distinct or dramatic.
Overall	3.2	
Intactness		
Overall	2	The human-made features visible from this location clutter the view and do not enhance its existing character. The view is not intact due to human-made features present throughout the view which are incompatible with the natural features of the landscape.
Unity		
Overall	2	The view from KOP 2 is not visually coherent, and numerous human-made features clutter and compete for dominance within the view.
Overall Visual Quality Score	2.4	

*Score Key:
1 - Very Low; 2 - Low; 3 - Moderately Low; 4 - Average; 5 - Moderately High; 6 - High; 7 - Very High

Visual Resource Survey:		
Viewpoint:	KOP #2	Key View:
Date:	8/14/25	With Project
Description:	Representative view of westbound motorist on I-80.	
Photo Orientation:		
Viewer Position:	_____ Inferior <u> X </u> Level _____ Superior	
View	Notes (change from existing conditions)	
Foreground (0 - 1/2 mile)	The proposed project would result in additional grey metal utility poles on the right side of the frame and several additional utility lines over the roadway. Additionally, the green and white BESS battery containers would be visible along the roadway on the right side of the frame. These would be slightly obscured due to their color and the planting of ornamental trees along the property edge to provide a visual buffer to motorists, however these features would remain visible in the foreground.	
Middleground (1/2 - 4 miles)	The Project does not change the condition of the middleground view.	
Background (> 4 miles)	The Project does not change the condition of the background view.	
Vividness		
Feature	Score*	Notes (change from existing conditions)
Landform	2.5	The Project does not change the existing landform nor block views of the near and distant landscape.
Vegetation	2	Vegetation in the immediate foreground along the roadway and in the middleground would remain unchanged by the proposed project. The project would include the removal of the existing orchard to be replaced by the proposed BESS facility. Regular rows of evergreen ornamental hedges, trees, and flowering perennials form a variable edge of green which breaks up views of the BESS facility beyond. Vegetation remains consistent with similar vegetation present in the vicinity.
Water Feature		There are no water features visible from KOP #2.
Human-Made	3	The proposed project would add additional human-made features to the foreground. The neutral-toned BESS containers are partially screened by vegetation and are not distinctly visible. The Project gen-tie line and structures become the primary focus of this view and contrast against the sky. The new utility poles and lines would be especially prominent in the foreground.
Overall	2.5	
Intactness		
Overall	1.5	Increased visibility of utility infrastructure results in a decrease of intactness in the view.
Unity		
Overall	1	Additional project gen-tie lines and structures visible against the backdrop of the sky increases their visibility and reduces visual unity. The prominence of the proposed infrastructure detracts from the landscape features.
Overall Visual Quality Score	1.7	

*Score Key:
1 - Very Low; 2 - Low; 3 - Moderately Low; 4 - Average; 5 - Moderately High; 6 - High; 7 - Very High

Visual Resource Survey:		
Viewpoint: KOP #3	Key View:	
Date: 8/14/25	Existing Conditions	
Description: Representative view of eastbound motorists on I-80		
Photo Orientation: Northeast		
Viewer Position: _____ Inferior <u> X </u> Level _____ Superior		
View	Notes (describe existing conditions)	
Foreground (0 - 1/2 mile)	The immediate foreground is made of up black asphalt painted with white roadway lines. A small see-through fence separating I-80 from Kilkenny Road can faintly be seen inbetween swaths of tall yellow grass with intermittent clumps of large green shrubs lining the roadway. Large, grey lattice steel towers and wooden utility poles strung with utility lines are skylined across the center of the view. Orchard trees form a solid green line across the horizon. Four large billboards parallel the right side of the roadway above the orchard canopy.	
Middleground (1/2 - 4 miles)	Near the center of the image, a concrete overpass forms a short horizontal line. Due to intervening vegetation and features, no other features are visible in the middleground from KOP #3.	
Background (> 4 miles)	The background is not visible from this location due to the flat topography of the area, intervening features, and low clouds hazing the surroundings.	
Vividness		
Feature	Score*	Notes (describe existing conditions)
Landform	1	There are no prominent landforms visible from KOP #3. The topography is flat.
Vegetation	3	Majority of the foreground is made up of roadway and manmade features. There is some prominent vegetation along the right side of the roadway (the grasses, shrubs, and orchard).
Water Feature		There are no water features visible from KOP #3.
Human-Made	4	The view is cluttered with human-made features, including asphalt roads, various colored billboards, and existing overhead utility infrastructure. These features are not distinct or dramatic, and compete for visual dominance.
Overall	2.7	
Intactness		
Overall	2	The human-made features visible from this location clutter the view and do not enhance its existing character. The view is not intact due to human-made features present throughout the view which are incompatible with the natural features of the landscape.
Unity		
Overall	2	The view from KOP 3 is not visually coherent, and numerous human-made features clutter and compete for dominance within the view.
Overall Visual Quality Score	2.2	

*Score Key:
1 - Very Low; 2 - Low; 3 - Moderately Low; 4 - Average; 5 - Moderately High; 6 - High; 7 - Very High

Visual Resource Survey:		
Viewpoint: KOP #3	Key View:	
Date: 8/14/25	With Project	
Description:		
Photo Orientation:		
Viewer Position: _____ Inferior <u> X </u> Level _____ Superior		
View	Notes (change from existing conditions)	
Foreground (0 - 1/2 mile)	The Project would result in additional grey metal utility poles on the right side of the frame in the foreground and additional overhead utility lines that cross over I-80. Additionally, the Project would remove the existing orchard that is visible along the right side of the roadway and replace it with several BESS battery storage containers. Rows of ornamental trees would be planted along the property boundary to provide a visual buffer; however, these containers would remain visible in the foreground from this location.	
Middleground (1/2 - 4 miles)	The Project does not change the condition of the middleground view.	
Background (> 4 miles)	The Project does not change the condition of the background view.	
Vividness		
Feature	Score*	Notes (change from existing conditions)
Landform	1	The Project does not change the existing landform nor block views of the near and distant landscape.
Vegetation	2.5	The Project would include in the removal of the orchard that is visible along the right side of I-80. Green shrubs and regularly-spaced trees form an irregular dotted line surrounding, and largely obscuring, the BESS facility. Vegetation along the roadside would not be effected by the Project.
Water Feature		There are no water features visible from KOP #3.
Human-Made	3.5	The proposed project would add additional human-made features to the foreground. The neutral-toned BESS infrastructure is generally obscured by a green screen fence and vegetation, and are not distinctly visible. The Project gen-tie line and structures clutter the view, compete for dominance, and contrast against the sky, but are largely consistent with existing infrastructure and human-made features within the view.
Overall	2.3	
Intactness		
Overall	1.5	While the proposed gen-tie structures are similar in form and function as existing utility infrastructure visible from KOP #3, the increased visibility of the proposed infrastructure results in a decrease of intactness in the view.
Unity		
Overall	1.5	Additional project gen-tie lines and structures breaking up the backdrop of the sky increases their visibility and reduces visual unity. The complex linear forms created by the proposed infrastructure detracts from the landscape features.
Overall Visual Quality Score	1.8	

*Score Key:
1 - Very Low; 2 - Low; 3 - Moderately Low; 4 - Average; 5 - Moderately High; 6 - High; 7 - Very High

Visual Resource Survey:		
Viewpoint: KOP #4	Key View:	
Date: 8/14/25	Existing Conditions	
Description: Representative view from residences on Willow Road		
Photo Orientation: Northeast		
Viewer Position: _____ Inferior <input checked="" type="checkbox"/> Level _____ Superior		
View	Notes (describe existing conditions)	
Foreground (0 - 1/2 mile)	There is a row of light yellow and brown shrubs in the immediate foreground followed by a strip of brown dirt and a large, solid field of green grass is the most consistent features in the view. Across the field a large orchard characterized by evenly-spaced medium sized trees forms a dotted green line across the center of the frame. Traffic from I-80 is visible on the left side of the frame. Four billboards are elevated above the treeline in the middleground. Large lattice steel towers strung with utility lines are skylined and span across the frame.	
Middleground (1/2 - 4 miles)	Dispersed views of utility lines strung across large, grey lattice steel towers are present in the middleground, intermittently obscured by intermittent bunches of large green trees. Features in the middleground are irregular and cluttered.	
Background (> 4 miles)	Faint silhouettes of distant utility towers are present along the horizon on the right side of the image. The background is generally not visible from this location due to the flat topography of the area, intervening features, and low clouds hazing the surroundings.	
Vividness		
Feature	Score*	Notes (describe existing conditions)
Landform	1	There are no prominent landforms visible from KOP #4. The topography is flat.
Vegetation	5	The row of golden grasses and solid green, large grassy field contrasts with the tones of surrounding features and is prominent in the foreground. The even line of orchard trees beyond the field provides a dark edge at the top of the field, but does not contrast highly with surrounding features above the horizon. The skylined trees in the middleground are irregular in form but typical of the area.
Water Feature		There are no water features visible from KOP #4.
Human-Made	4	The centerline of the view is cluttered with human-made features which contrast to varying degrees against the sky, including various colored billboards, and existing overhead utility structures and lines. These features are not distinct or dramatic, and compete for visual dominance.
Overall	3.3	
Intactness		
Overall	4	The human-made features visible from this location clutter the view and distract from natural features within the view. The view is not intact due to human-made features present throughout the view which are incompatible with the natural features of the landscape.
Unity		
Overall	3	The view from KOP 4 is not visually coherent, and visual dominance is split between features below and above the horizon line. Below the horizon, the view is dominated by the consistent textures and colors of the green field, banded by the dark green line of orchard trees along the center of the view. Above the horizon, a mix of large trees and human-made features (utility infrastructure, billboards) compete for dominance and interrupt the backdrop of the sky.
Overall Visual Quality Score	3.4	

*Score Key:
1 - Very Low; 2 - Low; 3 - Moderately Low; 4 - Average; 5 - Moderately High; 6 - High; 7 - Very High

Visual Resource Survey:		
Viewpoint: KOP #4	Key View:	
Date: 8/14/25	With Project	
Description: Representative view from residences on Willow Road		
Photo Orientation:		
Viewer Position: _____ Inferior <input checked="" type="checkbox"/> Level _____ Superior		
View	Notes (change from existing conditions)	
Foreground (0 - 1/2 mile)	The immediate foreground would be unchanged by the proposed project. Along the horizon, the proposed BESS facility is largely obscured by a green screen perimeter fence, and surrounding rows of green shrubs and trees. Trees and billboards behind the facility are cluttered and irregular.	
Middleground (1/2 - 4 miles)	The addition of large utility poles and utility lines forms complex lines visible against the sky, and further clutters the middleground.	
Background (> 4 miles)	The Project does not change the condition of the background view.	
Vividness		
Feature	Score*	Notes (change from existing conditions)
Landform	1	There are no prominent landforms visible from KOP #4. The topography is flat.
Vegetation	4.5	The Project would result in no changes to the large field in the immediate foreground; however, it would result in the removal of the existing orchard and the addition of utility infrastructure which would slightly obscure views of trees in the middleground. The existing orchard would be replaced with several BESS battery storage containers. Rows of ornamental trees would be planted along the property boundary to provide a visual buffer; however, these containers would remain visible in the foreground from this location.
Water Feature		There are no water features visible from KOP #4.
Human-Made	3.5	The proposed project would not effect views of the grassy field in the immediate foreground, but would add additional human-made features visible along the horizon and against the sky. The neutral-toned BESS facility is generally obscured by a green screen fence and vegetation around the perimeter, and is not distinctly visible. The Project gen-tie line and structures add more horizontal and vertical linear features which further clutter the view across the center of the frame, but are compatible in form and function and blend in unremarkably with existing infrastructure within the view.
Overall	3.0	
Intactness		
	3.5	While the proposed gen-tie structures are similar in form and function as existing utility infrastructure visible from KOP #4, the increased presence of human-made features and visibility of the proposed infrastructure results in a decrease of intactness in the view.
Unity		
	2.5	The proposed project would not change the unified view of the immediate foreground. However, the introduction of additional human-made features which compete for dominance along the horizon and detract from landscape features.
Overall Visual Quality Score	3.0	

*Score Key:
1 - Very Low; 2 - Low; 3 - Moderately Low; 4 - Average; 5 - Moderately High; 6 - High; 7 - Very High

Visual Resource Survey:		
Viewpoint: KOP #5	Key View:	
Date: 4/1/26	Existing Conditions	
Description: Representative view of local motorists and residences off Kilkenny Road		
Photo Orientation: Northeast		
Viewer Position: _____ Inferior <input checked="" type="checkbox"/> Level _____ Superior		
View	Notes (describe existing conditions)	
Foreground (0 - 1/2 mile)	The worn asphalt roadway creates a smooth band of grey in the immediate foreground, with bare, tan earth leading up to an orchard. A large orchard characterized by evenly-spaced medium-sized trees form a soft swath of green across the center of the frame. Tufts of green and yellow grasses are present between the rows of orchard trees and small earthen berms peek out between the grasses, in line with the tree rows.	
Middleground (1/2 - 4 miles)	A large blue and yellow billboard is skylined and highly visible above the orchard canopy. Intermittent views of three distinct utility lines strung across large, grey lattice steel towers are present at the same height as the orchard canopy, intermittently obscured by the tree canopies. Features in the middleground are distinctly humanmade.	
Background (> 4 miles)	The background is not visible from this location due to the flat topography of the area and intervening features.	
Vividness		
Feature	Score*	Notes (describe existing conditions)
Landform	1	There are no prominent landforms visible from KOP #5. The topography is flat.
Vegetation	4	The rows of green orchard canopies and tufts of green and gold grasses contrast with the tones of surrounding humanmade features and is prominent in the foreground. The even line of orchard trees are skylined, and are irregular in form but typical of the area.
Water Feature		There are no water features visible from KOP #5.
Human-Made	3	The asphalt roadway in the foreground of the view is worn and does not contrast highly with the adjacent bare-earthen roadside. Humanmade features encroach the middleground of the view, with three utility lines strung between lattice steel towers introducing linear elements above, and at, the top of the orchard treeline. The bright blue and yellow billboard in the middleground contrasts highly against the soft, green treeline and against the sky, and its solid rectangular form is distinct from the natural features of the orchard.
Overall	2.7	
Intactness		
Overall	3	The human-made features visible from this location clutter the view and distract from vegetative features within the view. The view is not intact due to human-made features present throughout the view which are inconsistent in form, line, and color.
Unity		
Overall	2.5	The view from KOP 5 is not visually coherent, and human-made features in the middleground clutter and compete for dominance within the view.
Overall Visual Quality Score	2.7	

*Score Key:
1 - Very Low; 2 - Low; 3 - Moderately Low; 4 - Average; 5 - Moderately High; 6 - High; 7 - Very High

Visual Resource Survey:		
Viewpoint: KOP #5	Key View:	
Date: 4/1/26	With Project	
Description: Representative view of local motorists and residences off Kilkenny Road		
Photo Orientation:		
Viewer Position: _____ Inferior <input checked="" type="checkbox"/> Level _____ Superior		
View	Notes (change from existing conditions)	
Foreground (0 - 1/2 mile)	The foreground is dominated by humanmade features. In the immediate foreground, the proposed BESS facility is largely obscured by a green screen perimeter fence and tiered perimeter plantings consisting of green, flowering, and colorful trees and shrubs. The perimeter fence is topped with three regularly-spaced strands of barbed wire, which contribute to the clutter of lines across the center of the view. Overhead utility lines, TSPs, and substation structures are visible above the perimeter fence and introduce horizontal and vertical linear features which are highly contrasted against the sky.	
Middleground (1/2 - 4 miles)	The removal of foreground trees increased exposure of existing utility structures and the large billboard. The structures and utility lines form complex lines visible against the sky, and further clutters the middleground.	
Background (> 4 miles)	The background remains obscured by intervening features.	
Vividness		
Feature	Score*	Notes (change from existing conditions)
Landform	1	The Project does not change the existing landform nor block views of the near and distant landscape.
Vegetation	1	The Project would introduce additional ornamental landscaping in the immediate foreground; however, it would result in the removal of the existing orchard, which was the prominent vegetative feature in the view. The existing orchard would be replaced by the BESS facility and proposed substation with a green screen perimeter fence. Rows of ornamental vegetation would be planted along the property boundary to provide a visual buffer; however, humanmade features would be visually dominant.
Water Feature		There are no water features visible from KOP #5.
Human-Made	1	The proposed project would introduce additional humanmade features which would be visually prominent in the immediate foreground and against the sky. The neutral-toned BESS facility is generally obscured by a green screen fence and ornamental vegetation around the perimeter, and is not distinctly visible. The Project gen-tie line and structures add more horizontal and vertical linear features which clutter the view across the center of the frame. The existing billboard and lattice steel structures visible in the middleground would be more highly visible with the removal of existing orchard vegetation.
Overall	1.0	
Intactness		
	1	While the proposed gen-tie structures are similar in form and function as existing utility infrastructure visible from KOP #5, the increased presence of human-made features and visibility of the proposed infrastructure is varied and cluttered, and results in a decrease of intactness in the view.
Unity		
	1	The proposed project would introduce varied additional human-made features and increase exposure of existing humanmade features, all of which compete for visual dominance and detract from landscape features.
Overall Visual Quality Score	1.0	

*Score Key:
1 - Very Low; 2 - Low; 3 - Moderately Low; 4 - Average; 5 - Moderately High; 6 - High; 7 - Very High

Visual Resource Survey:		
Viewpoint:	KOP #6	Key View: Existing Conditions
Date:	4/1/26	
Description: Representative view of eastbound motorist on I-80.		
Photo Orientation: East		
Viewer Position: _____ Inferior <input checked="" type="checkbox"/> Level _____ Superior		
View	Notes (describe existing conditions)	
Foreground (0 - 1/2 mile)	The foreground of the view contains varied bands of color and texture, alternating between humanmade and natural elements. In the immediate foreground, the worn asphalt roadway forms a smooth, grey surface leading up to a solid band of softly-textured green and gold grasses topped with flecks of white seedheads and flower clusters. Strands of barbed wire strung across evenly-spaced steel posts are visible above the grass line, and between which a tan bare-earthen berm and access road is visible with intermittent green clusters of shrubs. Above the road surface, an orchard of mid-sized green trees form neat rows and a soft silhouette against the sky, with green and gold grasses between the trees. On the left side of the image, a distinct blue and yellow billboard is skylined and contrasts highly against the surrounding features.	
Middleground (1/2 - 4 miles)	The middleground is made up of tall, skylined lattice steel towers supporting a series of utility lines. The towers contrast highly and are much larger in scale than the surrounding natural features. The utility lines form a series of horizontal, linear features which present distinctly against the sky. On the left side of the image, an irregular patch of broad-canopied grey-green trees are silhouetted against the sky. Toward the right side of the image, a cluster of coniferous trees form a deep green swath of silhouettes, distinctly darker than other vegetation visible from KOP 6.	
Background (> 4 miles)	The background is not visible from this location due to the flat topography of the area and intervening features.	
Vividness		
Feature	Score*	Notes (describe existing conditions)
Landform	1	There are no prominent landforms visible from KOP #6. The topography is flat.
Vegetation	3.5	Vegetation in the foreground is broken up by linear human-made features. The grassy road edge presents a soft band of green and gold in the immediate foreground, and the orchards present consistent green tree canopies and understory grasses which form a distinct centerline of the view - both of which are typical of the area. Two clusters of trees in the middleground are taller and skylined, with pale green and dark green treetops contrasting clearly against the sky.
Water Feature		There are no water features visible from KOP #6.
Human-Made	2	The view is cluttered with several human-made features, including asphalt roads, a large colorful billboard, metal fencing, and existing utility infrastructure. The asphalt roadway and barbed wire fencing are not distinct or dramatic. The solid, colorful surface of the billboard on the left side of the image contrasts highly with other features in the view. The existing utility infrastructure is highly visible and distinct against the sky, and the linear/angular features of the infrastructure contrast with the surrounding natural forms.
Overall	2.2	
Intactness		
Overall	2	The human-made features visible from this location clutter the view and do not enhance its existing character. The view is not intact due to human-made features present throughout the view which are incompatible with the natural features of the landscape.
Unity		
Overall	2	The view from KOP 6 is not visually coherent, and numerous human-made features clutter and compete for dominance within the view.
Overall Visual Quality Score	2.1	

*Score Key:
1 - Very Low; 2 - Low; 3 - Moderately Low; 4 - Average; 5 - Moderately High; 6 - High; 7 - Very High

Visual Resource Survey:		
Viewpoint:	KOP #6	Key View: With Project
Date:	4/1/26	
Description: Representative view of eastbound motorist on I-80.		
Photo Orientation:		
Viewer Position: _____ Inferior <input checked="" type="checkbox"/> Level _____ Superior		
View	Notes (change from existing conditions)	
Foreground (0 - 1/2 mile)	The proposed project would not result in changes to the immediate foreground. Above the road surface, in place of the existing orchard, the proposed project facilities would become the dominant visual feature within the view. The proposed substation facility would introduce a series of overhead structures, consisting of steel frames and solid rectilinear components. Overhead utility lines create a series of arced and horizontal features visible against the sky. A green screened perimeter fence partially obscures views of the lower components, and most of the proposed BESS containers. The tops of the BESS containers and project control house are visible just above the fence line. Regularly-spaced ornamental shrubs and trees slightly soften the edge of the project facility. On the left side of the image, the existing blue and yellow billboard remains skylined and contrasts against the surrounding features.	
Middleground (1/2 - 4 miles)	Project gen-tie and overhead structures are consistent with the forms and lines of existing overhead lattice steel towers and utility lines visible in the middleground. The clusters of trees on the left side of the image are more obscured by Project BESS containers, but their canopies are still visible above these components. The cluster of coniferous trees on the right side of the image are largely obscured by Project substation components, and are only visible when looking underneath the steel frame structures of the proposed substation .	
Background (> 4 miles)	The Project does not change the condition of the background view.	
Vividness		
Feature	Score*	Notes (change from existing conditions)
Landform	1	The Project does not change the existing landform nor block views of the near and distant landscape.
Vegetation	1.5	Vegetation in the immediate foreground along the roadway and in the middleground would remain unchanged by the proposed project. The project would include the removal of the existing orchard to be replaced by the proposed BESS facility and substation. Regularly-spaced plantings trees and flowering shrubs form a variable edge of green which breaks up views of the swath of green fencing behind. In the distant middleground, the canopies of existing trees are more obscured by project components, but still visible.
Water Feature		There are no water features visible from KOP #6.
Human-Made	1	The proposed project would add additional human-made features to the foreground which introduce visual clutter and compete for dominance within the view. The neutral-toned BESS containers and control building are generally screened by the green screen perimeter fence and are not distinctly visible. The Project gen-tie line, overhead structures, and substation components become the primary focus of this view and contrast against the sky.
Overall	1.2	
Intactness		
Overall	1	Increased visibility of utility infrastructure results in a decrease of intactness in the view.
Unity		
Overall	1	Additional project gen-tie lines and structures contrasted against the backdrop of the sky increases their visibility and reduces visual unity. The prominence of the proposed infrastructure detracts from the landscape features.
Overall Visual Quality Score	1.1	

*Score Key:
1 - Very Low; 2 - Low; 3 - Moderately Low; 4 - Average; 5 - Moderately High; 6 - High; 7 - Very High

Appendix B

KOP Correspondence with CEC

Re: [EXT] Re: Vaca Dixon Power Center - New Site KOP Review Request

From Hamblin, Mark@Energy <Mark.Hamblin@energy.ca.gov>

Date Mon 8/11/2025 5:10 PM

To Adam Morrison <amorrison@rinconconsultants.com>; Megan Knight <mknight@rinconconsultants.com>

Cc Katherine Green <kgreen@rinconconsultants.com>; Brenda Eells <beells@rinconconsultants.com>; Hannah Bireschi <hbireschi@rinconconsultants.com>; Robert Ray <rroy@patchservices.com>

CAUTION: This email originated from outside of Rincon Consultants. Be cautious before clicking on any links, or opening any attachments, until you are confident that the content is safe .

Adam,

In my earlier email I wanted to flag you that the project is in an "urbanized area" [\[1\]](#) as defined by CEQA. Because of being in an urbanized area, the applicable portion of CEQA Guidelines Appendix G, Section I, Aesthetics, subsection (c) asks "*If the project is in an urbanized area, would the project conflict with applicable zoning and other regulations governing scenic quality?*"

In my cursory review of the new project site, the city of Vacaville General Plan and zoning show the site designated "Business Park" and zoned "Business Park" (BP). The scenic quality requirements and regulation of the Business Park general plan designation and zoning are applicable to the project. A CEQA related adverse effect would exist if the project in an urbanized area conflicts with zoning and other regulations governing scenic quality. Building/structure elevations, site and development plans, plot plan, renderings address the matter. No "objects of aesthetic significance" are within the surrounding area of the project site.

The proposed KOPs shown are fine, but not required per Cal. Code Regs., tit. 20, div. 2, chap. 5, Appendix B Information Requirements (6)(C) in an urbanized area. Suggested yes.

[\[1\]](#) *For the purposes of CEQA, an "urbanized area" means either "(a) An incorporated city that meets either of the following criteria: (1) Has a population of at least 100,000 persons. (2) Has a population of less than 100,000 persons if the population of that city and not more than two contiguous incorporated cities combined equals at least 100,000 persons." (Pub. Res. Code § 21071[a]) An urbanized area also includes unincorporated area that satisfies criteria in Pub. Res. Code § 21071(b).*

Mark R. Hamblin, MPA
Environmental Protection Branch
Siting, Transmission and Environmental Protection Division
California Energy Commission
715 P Street, MS 40
Sacramento, CA 95814-5504
email: mark.hamblin@energy.ca.gov
website: energy.ca.gov

From: Adam Morrison <amorrison@rinconconsultants.com>

Sent: Thursday, August 7, 2025 2:44 PM

To: Hamblin, Mark@Energy <Mark.Hamblin@energy.ca.gov>; Megan Knight <mknight@rinconconsultants.com>

Cc: Katherine Green <kgreen@rinconconsultants.com>; Brenda Eells <beells@rinconconsultants.com>; Hannah Bireschi <hbireschi@rinconconsultants.com>; Robert Ray <rrey@patchservices.com>

Subject: Re: [EXT] Re: Vaca Dixon Power Center - New Site KOP Review Request

CAUTION: This email originated from outside of the organization. Do not click links or open attachments unless you recognize the sender and know the content is safe.

Good afternoon, Mark,

Thank you for your feedback. To clarify, the BESS facilities are proposed to be installed in the City of Vacaville, but the Project will also include a gen-tie line that crosses I-80 and connects to the existing VacaDixon Peaker Plant to the north. The gen-tie line would extend outside of the City of Vacaville boundaries.

We have attached revised KOP locations for further consideration and feedback, including the preliminary gen-tie design. We have included the two views from I-80, which you expressed support for in your initial response, as well as two additional views from publicly accessible areas that provide a view of the Project components outside of the "urbanized area" (i.e., the gen-tie line that extends outside the limits of the City of Vacaville). Please let us know if you have any additional feedback based on this information.

Thank you,
Adam



Adam Morrison

Senior Environmental Planner

amorrison@rinconconsultants.com

760-517-9127 Direct

San Diego, California

From: Hamblin, Mark@Energy <Mark.Hamblin@energy.ca.gov>

Sent: Thursday, July 31, 2025 1:25 PM

To: Megan Knight <mknight@rinconconsultants.com>

Cc: Kerr, Steven@Energy <Steven.Kerr@energy.ca.gov>; Katherine Green <kgreen@rinconconsultants.com>; Adam Morrison <amorrison@rinconconsultants.com>; Brenda Eells <beells@rinconconsultants.com>; Hannah Bireschi <hbireschi@rinconconsultants.com>; Robert Ray <rrey@patchservices.com>

Subject: [EXT] Re: Vaca Dixon Power Center - New Site KOP Review Request

CAUTION: This email originated from outside of Rincon Consultants. Be cautious before clicking on any links, or opening any attachments, until you are confident that the content is safe .

Megan,

I've included a few comments and observations regarding the new project location and the suggested KOPs. Please note that Steve Kerr is no longer with the Californian Energy Commission. He accepted a position in another state agency a couple weeks ago. His former CEC position is currently vacant. In the interim, Eric Knight, Branch Manager of the Environmental Protection Branch, is serving as the acting unit supervisor.

Mark R. Hamblin, MPA
Environmental Protection Branch
Siting, Transmission and Environmental Protection Division
California Energy Commission
715 P Street, MS 40
Sacramento, CA 95814-5504
email: mark.hamblin@energy.ca.gov
website: energy.ca.gov

From: Megan Knight <mknight@rinconconsultants.com>

Sent: Wednesday, July 30, 2025 4:37 AM

To: Hamblin, Mark@Energy <Mark.Hamblin@energy.ca.gov>

Cc: Kerr, Steven@Energy <Steven.Kerr@energy.ca.gov>; Katherine Green <kgreen@rinconconsultants.com>; Adam Morrison <amorrison@rinconconsultants.com>; Brenda Eells <beells@rinconconsultants.com>; Hannah Bireschi <hbireschi@rinconconsultants.com>; Robert Ray <rarray@patchservices.com>

Subject: Vaca Dixon Power Center - New Site KOP Review Request

CAUTION: This email originated from outside of the organization. Do not click links or open attachments unless you recognize the sender and know the content is safe.

Good morning Mark,

I hope this message finds you well! Due to constraints at the previous Vaca Dixon Power Center site, the project has been relocated immediately south of the old site (south of I-80). The project is now located within the incorporated boundaries of the City of Vacaville.

We are currently preparing to go out for a site visit to take KOP photos for our visual simulations and other character photos of the project vicinity, and are reaching out for your feedback on the locations we have selected as potential viewpoints for the project. I have attached a KMZ of the draft photo locations. Each KOP also includes details of the viewer group that particular KOP represents (i.e. motorists, residents, etc.). If you could please review, and let us know your thoughts, we would greatly appreciate it. We are also happy to setup a call to go over the locations if that is better suited for you.

Thanks so much for your time and talk to you soon!

Sincerely,



Megan Knight

Environmental Planner/Biologist

mknight@rinconconsultants.com

805-644-4455 Main | 805-329-5118 Direct

San Luis Obispo, California

July 31, 2025

Proposed Project: Vaca Arges

Assessor parcel number (APN): 0133-060-060

The project site is shown in agricultural production; orchard (see Google Maps aerial view and street view dated April 2025).

The subject property is within the boundary of the city of Vacaville. The city General Plan shows the property designated as "Business Park," and being in the "Business Park" (BP) zone district.

The property is within the "Northeast Growth Area Overlay District" of the city.

The Solano County General Plan shows I-80 as a county scenic roadway.

Key Observation Point(s) and Suggestions

A *key observation point* (KOP) is a fixed position in a publicly accessible location where a public view of the project is analyzed and evaluated in the landscape.

The project site is within an "urbanized area"¹ as defined by CEQA, the preparation of a photo-realistic simulation of the project in the existing landscape is not required by Environmental Protection Branch staff (see California Code of Regulations [CCR], Title 20, Division 2, Chapter 5, Appendix B Information Requirements (6)(B)). A KOP(s) is recommended.

Looking at your KOP suggestions shown on the KMZ, I would support your use of the KMZ location number 2a, (I-80 east bound) and 2b (I-80 west bound). I-80 is shown as a Scenic Roadway on the Solano County General Plan, Figure RS-5 Scenic Roadways. A suggestion, assign all KOPs numbers: KOP 1, KOP 2, et seq. instead of 2a, 2b.

The potential physical change by the proposed project to an existing object of aesthetic significance and the existing physical environment in the area is what is analyzed. In my cursory review, using Google Earth and Google Maps, I am not seeing any "objects of aesthetics significance" on the site or in the vicinity.

The proposed project site is near or in the 64,000-acre Dixon Ridge agricultural region as shown in the Solano County General Plan (see Chapter 3-Agriculture) and/or a Vacaville-Dixon greenbelt of land between the cities of Vacaville and Dixon.

¹ For the purposes of CEQA, an "urbanized area" means either "(a) An incorporated city that meets either of the following criteria: (1) Has a population of at least 100,000 persons. (2) Has a population of less than 100,000 persons if the population of that city and not more than two contiguous incorporated cities combined equals at least 100,000 persons." (Pub. Res. Code § 21071[a]) An urbanized area also includes unincorporated area that satisfies criteria in Pub. Res. Code § 21071(b).

Agricultural land between the cities of Vacaville and Dixon experiences high development pressure. In order to maintain the physical separation between the cities, to acknowledge the development pressure in this area, and to promote the viability of agricultural operations, the County of Solano and the cities have devised things like agricultural regions, agricultural reserve overlays, and greenbelts.

CEQA, and CEQA Guidelines Environmental Factor — Aesthetics

California Energy Commission must assess "... the physical environmental conditions in the vicinity of the project. This environmental setting will normally constitute the baseline physical conditions by which a lead agency ^[2] determines whether an impact is significant." (14 CCR § 15125[a])

CEQA states "'Environment' means the physical conditions which exist within the area which will be affected by a proposed project, including land, air, water, minerals, flora, fauna, noise, objects of historic or aesthetic significance [emphasis added]" (Pub. Res. Code § 21060.5)

The CEQA Guidelines also state a "'Significant effect on the environment' means a substantial, or potentially substantial, adverse change in any of the physical conditions within the area affected by the project including land, air, water, minerals, flora, fauna, ambient noise, and objects of historic or aesthetic significance ^[3] [emphasis added]." (14 CCR § 15382)

The CEQA Guidelines state "Effects analyzed under CEQA must be related to a physical change." (14 CCR § 15358[b])

The *CEQA Guidelines Appendix G Environmental Checklist Form, I. Aesthetics*, as amended December 28, 2018, provides questions (criteria) for evaluating whether a proposed project may have a "significant effect on the environment" involving the environmental factor "Aesthetics."

The applicable part of *CEQA Guidelines Appendix G Environmental Checklist Form, I. Aesthetics, c*, asks "If the project is in an urbanized area, would the project conflict with applicable zoning and other regulations governing scenic quality?" If the proposed project is in nonconformance with zoning and other regulations governing scenic quality, it would be an adverse effect for the purposes of CEQA and the CEQA Guidelines (a "significant effect on the environment").

Completing the evaluation typically entails examining aerial and street view imagery, reviewing Geographic Information System (GIS) information, assessing elevations,

² "'Lead agency' means the public agency which has the principal responsibility for carrying out or approving a project." (14 CCR § 15367)

³ An "object of historic significance" is a broad term that typically encompasses cultural or historical artifacts and relics over 50 years old (e.g., archaeological finds, structures, tools, weapons).

architectural and site development plans, drawings, and renderings, reviewing applicable federal, state, and local government codes and regulations, maps and plans, consulting tour book guides and road atlases, and a visit to the project site and the surrounding area.

Vaca Dixon Power Center - KOPs Recap

From Megan Knight <mknight@rinconconsultants.com>

Date Thu 2/26/2026 8:33 AM

To Jon Boyer <jboyer@mrpgenco.com>; Robert Ray <rroy@patchservices.com>; Renee.Longman@Energy.ca.gov <Renee.Longman@Energy.ca.gov>; mc.mca@comcast.net <mc.mca@comcast.net>; Christopher Lopez <clopez@mrpgenco.com>; Eric.Knight@energy.ca.gov <Eric.Knight@energy.ca.gov>

Cc Katherine Green <kgreen@rinconconsultants.com>; Brenda Eells <beells@rinconconsultants.com>; Adam Morrison <amorrison@rinconconsultants.com>

Good morning, all!

Thank you all so much for taking the time to review the KOP imagery with us, discuss the goals of the additional KOPs, and confirm the features meant to be characterized in each view. As discussed, Rincon will remobilize to capture additional photos for KOP 5 and KOP 6. Similar to the image shown during our call, KOP 5 will be located along Kilkenny Road, looking northeast, to capture foreground views of the Vaca Dixon BESS component with the Substation in the background. KOP 6 will be located along northbound I-80, near the GPS coordinate provided in the data request and looking east, to capture the Arges BESS and Substation components within the same frame of view. Both views will be photographed with adequate lighting so as to provide optimal depth of detail. Additionally, we will have a two-person team present to safely take photos from the roadway (rather than the side road[s]).

If you have any questions or would like to discuss anything further, please do not hesitate to ask. Thank you again and have a great rest of your week!



Megan Knight (She/Her/Hers)
Environmental Planner/Biologist
mknight@rinconconsultants.com
805-644-4455 Main | 805-329-5118 Direct
San Luis Obispo, California
Out of Office: 5/21-5/31