

DOCKETED

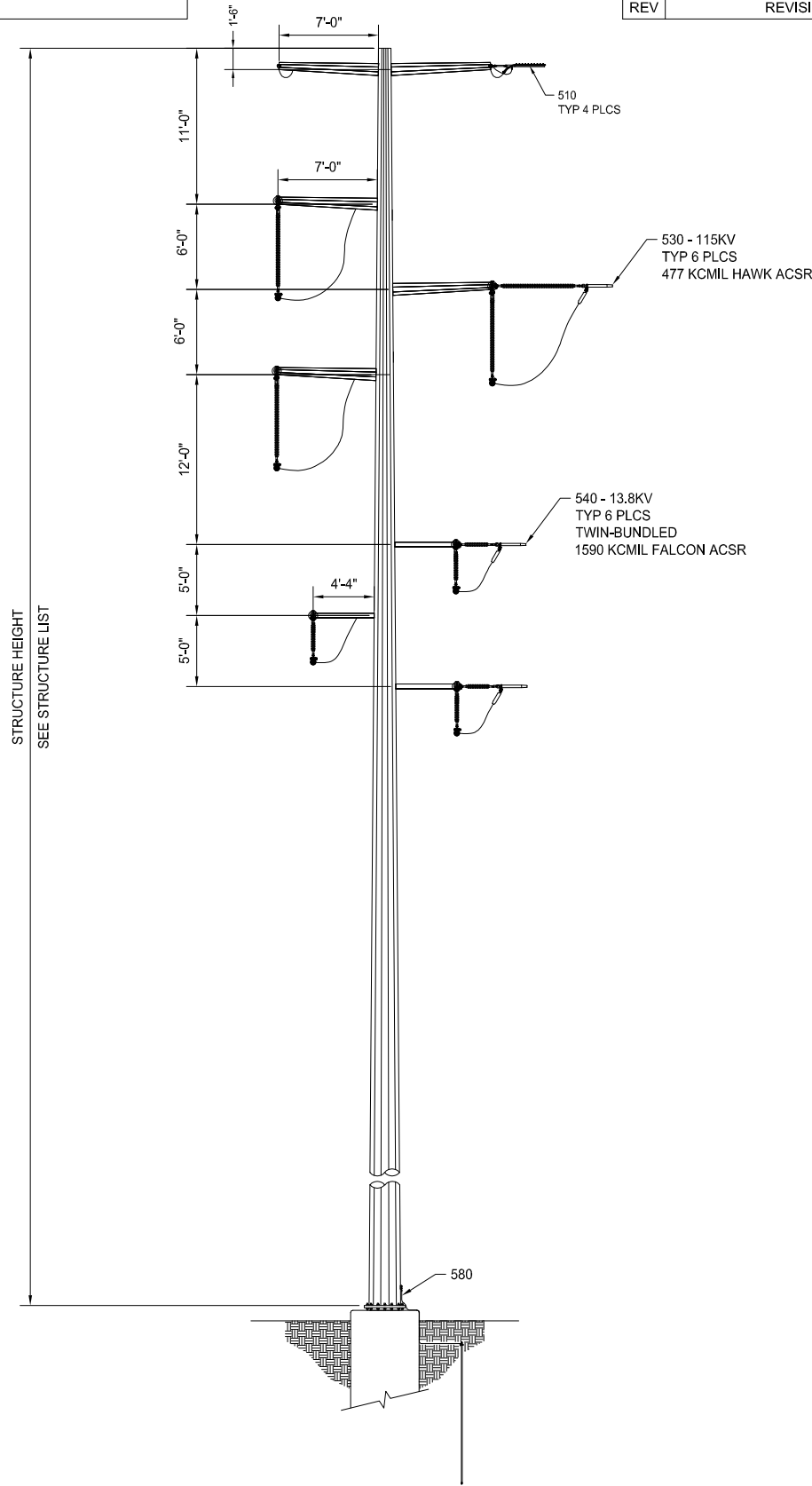
Docket Number:	26-OPT-01
Project Title:	Vaca Dixon Power Center Project
TN #:	270285
Document Title:	Appendix DR PD-1 Revised Drawings
Description:	Appendix to Data Request Response Set #1
Filer:	Adam Morrison
Organization:	Rincon Consultants, Inc.
Submitter Role:	Applicant Consultant
Submission Date:	5/27/2026 9:13:16 AM
Docketed Date:	5/27/2026

Appendix DR PD-1

Revised Drawings

THIS DRAWING WAS PREPARED BY POWER ENGINEERS, INC. FOR A SPECIFIC PROJECT, TAKING INTO CONSIDERATION THE SPECIFIC AND UNIQUE REQUIREMENTS OF THE PROJECT. REUSE OF THIS DRAWING OR ANY INFORMATION CONTAINED IN THIS DRAWING FOR ANY PURPOSE IS PROHIBITED UNLESS WRITTEN PERMISSION FROM BOTH POWER AND POWER'S CLIENT IS GRANTED.

A	CONCEPTUAL ONLY	06/13/2025	EJF	EJF	CAS	TWH
REV	REVISIONS	DATE	DRN	DSGN	CKD	APPD



DETAIL	DESCRIPTION	QTY
510	OHGW ASSEMBLY	4
520	OPGW ASSEMBLY	-
530	CONDUCTOR ASSEMBLY	6
540	UNDERBUILD ASSEMBLY	6
550	COMMUNICATION ASSEMBLY	-
560	GUY & ANCHOR ASSEMBLY	-
570	BRACES & CROSSARM ASSEMBLY	-
580	GROUNDING ASSEMBLY	1
590	MISCELLANEOUS ASSEMBLY	-

* SEE STRUCTURE LIST FOR SPECIFIC ASSEMBLIES

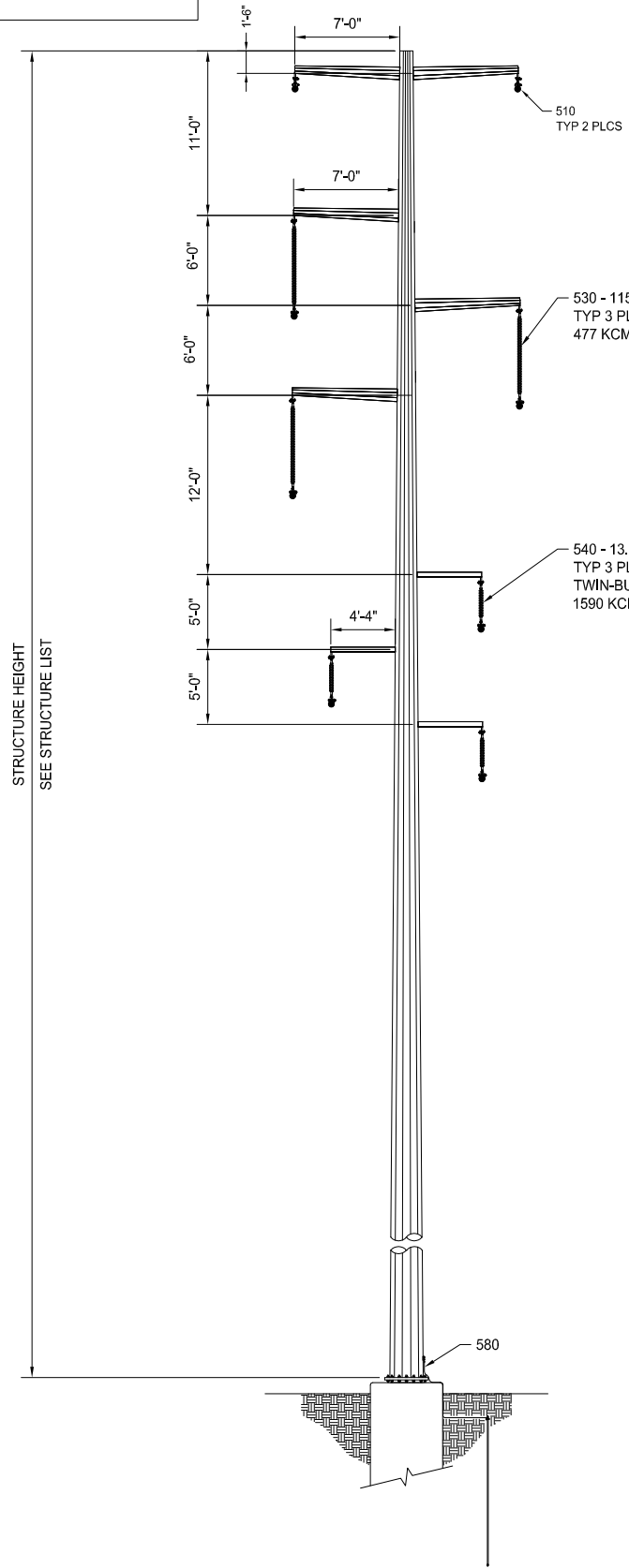
STR #	STRUCTURE HEIGHT (FT)
03	100
06	95
07	95
08	90

TL-05-01_DC DE.dwg

DSGN	EJF	06/13/2025		GOLDEN DEVELOPMENT	JOB NUMBER	REV
DRN	EJF	06/13/2025		VACA+ARGES BESS	0256726	A
CKD	CAS	06/13/2025		DC DEADEND (0-90°), DELTA W/ JUMPER STEEL POLE	DRAWING NUMBER	TL-05-01
SCALE: NTS			FOR 8.5x11 DWG ONLY			
REFERENCE DRAWINGS						

THIS DRAWING WAS PREPARED BY POWER ENGINEERS, INC. FOR A SPECIFIC PROJECT, TAKING INTO CONSIDERATION THE SPECIFIC AND UNIQUE REQUIREMENTS OF THE PROJECT. REUSE OF THIS DRAWING OR ANY INFORMATION CONTAINED IN THIS DRAWING FOR ANY PURPOSE IS PROHIBITED UNLESS WRITTEN PERMISSION FROM BOTH POWER AND POWER'S CLIENT IS GRANTED.

A	CONCEPTUAL ONLY	06/13/2025	EJF	EJF	CAS	TWH
REV	REVISIONS	DATE	DRN	DSGN	CKD	APPD



DETAIL	DESCRIPTION	QTY
510	OHGW ASSEMBLY	2
520	OPGW ASSEMBLY	-
530	CONDUCTOR ASSEMBLY	3
540	UNDERBUILD ASSEMBLY	3
550	COMMUNICATION ASSEMBLY	-
560	GUY & ANCHOR ASSEMBLY	-
570	BRACES & CROSSARM ASSEMBLY	-
580	GROUNDING ASSEMBLY	1
590	MISCELLANEOUS ASSEMBLY	-

* SEE STRUCTURE LIST FOR SPECIFIC ASSEMBLIES

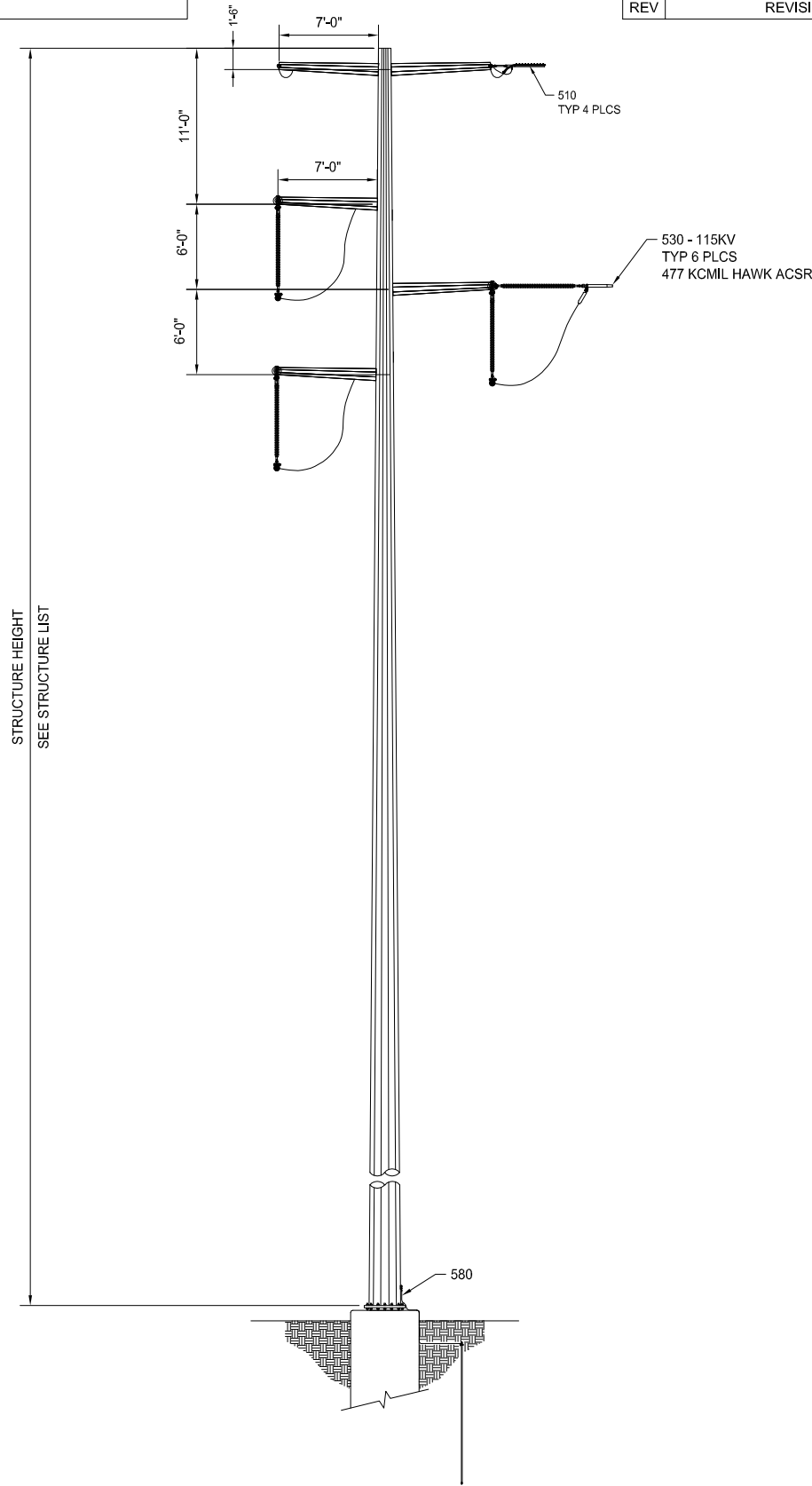
STR #	STRUCTURE HEIGHT (FT)
04	100
05	100

TL-05-02_DC SUSP.dwg

DSGN	EJF	06/13/2025		GOLDEN DEVELOPMENT	JOB NUMBER	REV
DRN	EJF	06/13/2025		VACA+ARGES BESS	0256726	A
CKD	CAS	06/13/2025		DC SUSPENSION (0°), DELTA STEEL POLE	DRAWING NUMBER	TL-05-02
SCALE: NTS			FOR 8.5x11 DWG ONLY			
REFERENCE DRAWINGS						

THIS DRAWING WAS PREPARED BY POWER ENGINEERS, INC. FOR A SPECIFIC PROJECT, TAKING INTO CONSIDERATION THE SPECIFIC AND UNIQUE REQUIREMENTS OF THE PROJECT. REUSE OF THIS DRAWING OR ANY INFORMATION CONTAINED IN THIS DRAWING FOR ANY PURPOSE IS PROHIBITED UNLESS WRITTEN PERMISSION FROM BOTH POWER AND POWER'S CLIENT IS GRANTED.

A	CONCEPTUAL ONLY	06/13/2025	EJF	EJF	CAS	TWH
REV	REVISIONS	DATE	DRN	DSGN	CKD	APPD



DETAIL	DESCRIPTION	QTY
510	OHGW ASSEMBLY	4
520	OPGW ASSEMBLY	-
530	CONDUCTOR ASSEMBLY	6
540	UNDERBUILD ASSEMBLY	-
550	COMMUNICATION ASSEMBLY	-
560	GUY & ANCHOR ASSEMBLY	-
570	BRACES & CROSSARM ASSEMBLY	-
580	GROUNDING ASSEMBLY	1
590	MISCELLANEOUS ASSEMBLY	-

* SEE STRUCTURE LIST FOR SPECIFIC ASSEMBLIES

STR #	STRUCTURE HEIGHT (FT)
01	70
02	100
09	80

TL-05-03_SC DE 115.dwg

	DSGN	EJF	06/13/2025		GOLDEN DEVELOPMENT	JOB NUMBER	REV
	DRN	EJF	06/13/2025		VACA+ARGES BESS	0256726	A
	CKD	CAS	06/13/2025		SC DEADEND (0-90°), DELTA W/ JUMPER STEEL POLE, 115KV ONLY	DRAWING NUMBER	TL-05-03
REFERENCE DRAWINGS	SCALE:		NTS	FOR 8.5x11 DWG ONLY			

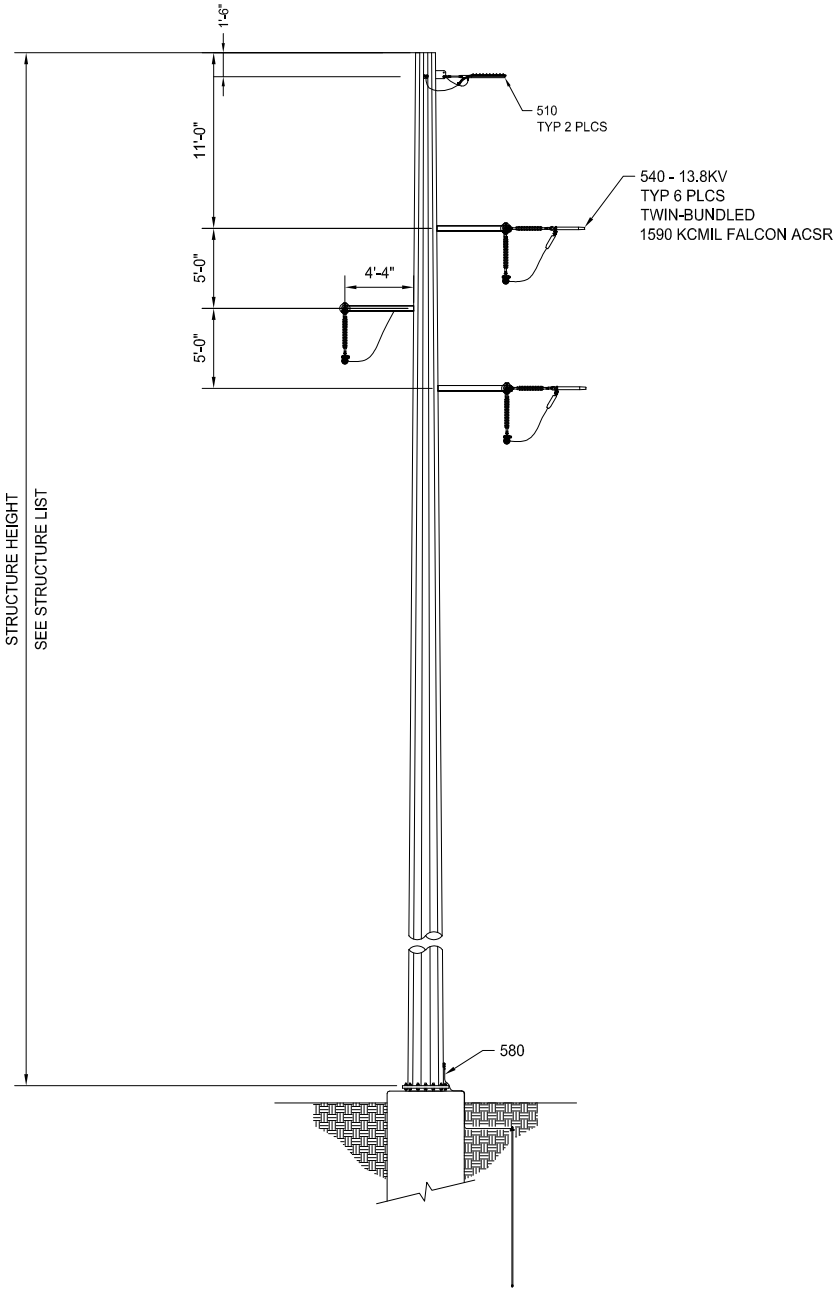
THIS DRAWING WAS PREPARED BY POWER ENGINEERS, INC. FOR A SPECIFIC PROJECT, TAKING INTO CONSIDERATION THE SPECIFIC AND UNIQUE REQUIREMENTS OF THE PROJECT. REUSE OF THIS DRAWING OR ANY INFORMATION CONTAINED IN THIS DRAWING FOR ANY PURPOSE IS PROHIBITED UNLESS WRITTEN PERMISSION FROM BOTH POWER AND POWER'S CLIENT IS GRANTED.

A	CONCEPTUAL ONLY	06/13/2025	EJF	EJF	CAS	TWH
REV	REVISIONS	DATE	DRN	DSGN	CKD	APPD

DETAIL	DESCRIPTION	QTY
510	OHGW ASSEMBLY	2
520	OPGW ASSEMBLY	-
530	CONDUCTOR ASSEMBLY	-
540	UNDERBUILD ASSEMBLY	6
550	COMMUNICATION ASSEMBLY	-
560	GUY & ANCHOR ASSEMBLY	-
570	BRACES & CROSSARM ASSEMBLY	-
580	GROUNDING ASSEMBLY	1
590	MISCELLANEOUS ASSEMBLY	-

* SEE STRUCTURE LIST FOR SPECIFIC ASSEMBLIES

STR #	STRUCTURE HEIGHT (FT)
03A	45
08A	45



STRUCTURE HEIGHT
SEE STRUCTURE LIST

TL-05-04_SC DE 13.dwg

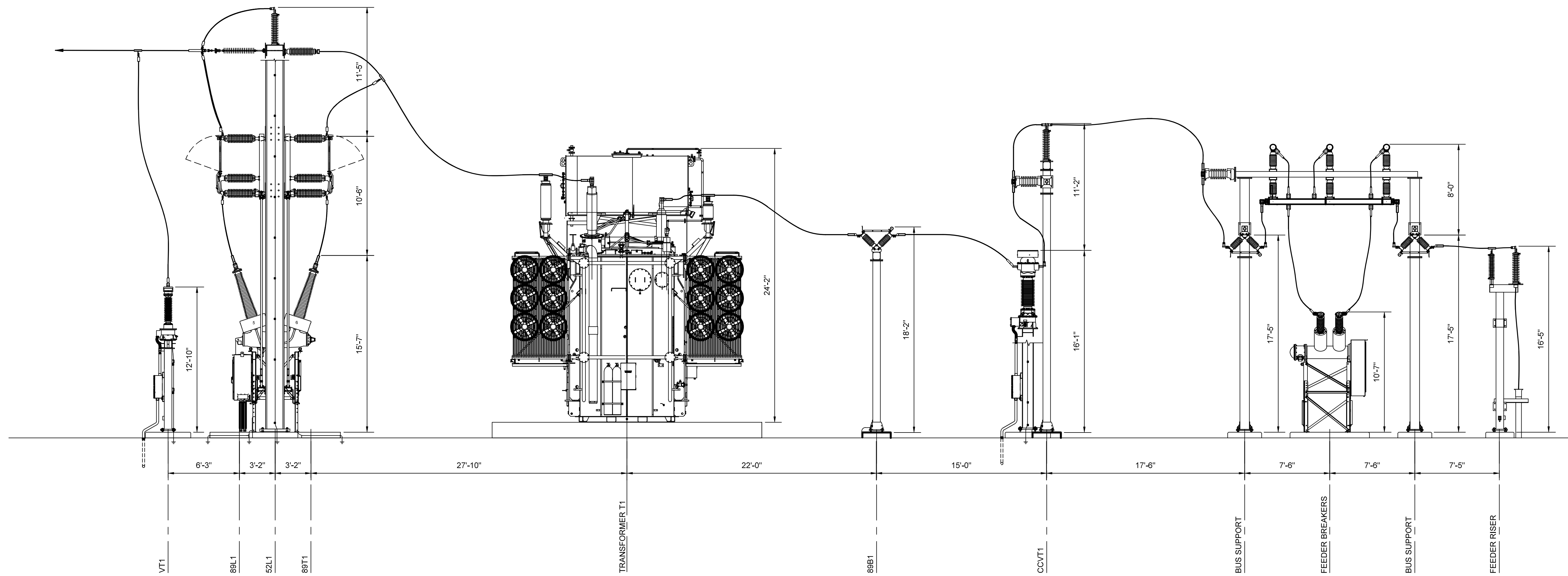
	DSGN	EJF	06/13/2025		GOLDEN DEVELOPMENT	JOB NUMBER	REV
	DRN	EJF	06/13/2025		VACA+ARGES BESS	0256726	A
	CKD	CAS	06/13/2025		SC DEADEND (0-90°), DELTA W/ JUMPER STEEL POLE - 13.8KV ONLY	DRAWING NUMBER	TL-05-04
REFERENCE DRAWINGS	SCALE: NTS			FOR 8.5x11 DWG ONLY			

PROJECT DATA

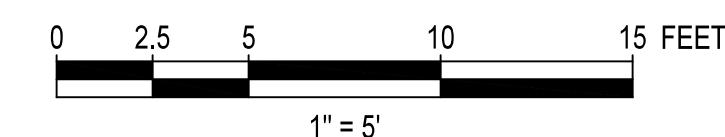
PROJECT ADDRESS: KILKENNY ROAD
 CITY OF VACAVILLE
 SOLANO COUNTY, CA, 95377
 APN: 0133060060
 PROJECT COORDINATES: 37.7121°, -121.4901°
 PROPERTY ACRES: 10.02 ±
 ZONING: BUSINESS PARK (BP)

SUBSTATION NOTES

- SUBSTATION FOOTPRINT SIZE SHOWN IN THIS DRAWING IS BASED OFF CLIENT PROVIDED DATA SHOWN IN "SP-100" AND DRAWING "E04-01-01" REVISION A.
- DIMENSIONS ARE PRELIMINARY AND SHALL BE FURTHER COORDINATED WITH GRADING DESIGNS BY OTHERS AFTER THE 30% DESIGN FOR FINAL SUBSTATION PAD SIZING, FENCE PLACEMENT, AND GATE LOCATIONS.



SECTION A
 SCALE 1"=5' E04-01-01



E04-02-01.DWG

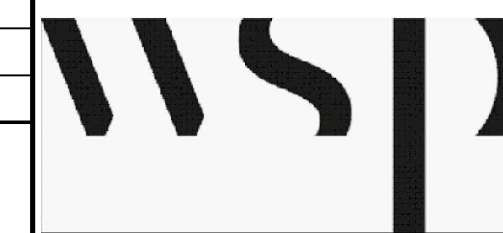
THIS DRAWING WAS PREPARED BY WSP, INC. FOR THIS SPECIFIC PROJECT, TAKING INTO CONSIDERATION THE SPECIFIC AND UNIQUE REQUIREMENTS OF THE PROJECT. REUSE OF THIS DRAWING OR ANY INFORMATION CONTAINED IN THIS DRAWING FOR ANY PURPOSE IS PROHIBITED UNLESS WRITTEN PERMISSION FROM BOTH WSP AND WSP'S CLIENT IS GRANTED.

CONCEPTUAL ONLY

NOT FOR CONSTRUCTION

REV	REVISIONS	DATE	DRN	DSGN	CKD	APPD	REFERENCE DRAWINGS
B	RE-ISSUED FOR PERMIT	03/13/226	JHD	KL	TH		
A	ISSUED FOR INFORMATION	11/21/2025	DW	JDJ	TWH		

DSGN	JDJ	11/21/2025
DRN	DW	11/21/2025
CKD	TWH	11/21/2025
SCALE:	1"=5'	
FOR 22x34 DWG ONLY		



MIDDLE RIVER POWER	JOB NUMBER	REV
ARGES BESS	0256726	B
115kV-34.5kV SUBSTATION ELEVATION	DRAWING NUMBER	E04-02-01