

**DOCKETED**

<b>Docket Number:</b>	26-SPPE-01
<b>Project Title:</b>	RB Inyokern Data Center (RBIDC)
<b>TN #:</b>	269626
<b>Document Title:</b>	RB Inyokern Data Center - SPPE Application - Appendix L
<b>Description:</b>	N/A
<b>Filer:</b>	Kyle Mohr
<b>Organization:</b>	R&L Capital Inc
<b>Submitter Role:</b>	Applicant Representative
<b>Submission Date:</b>	4/24/2026 11:50:34 AM
<b>Docketed Date:</b>	4/24/2026

# **RB INYOKERN DATA CENTER**

Application for Small Power Plant Exemption (SPPE)

*Inyokern, Kern County, California*

Docket Number - 26-SPPE-01

## **Supporting Document Appendix L**

Subsection(s):

- L.1 - Project One-Line
- L.2 - POI Location
- L.3 - Substation One-Line

# **RB INYOKERN DATA CENTER**

Application for Small Power Plant Exemption (SPPE)

*Inyokern, Kern County, California*

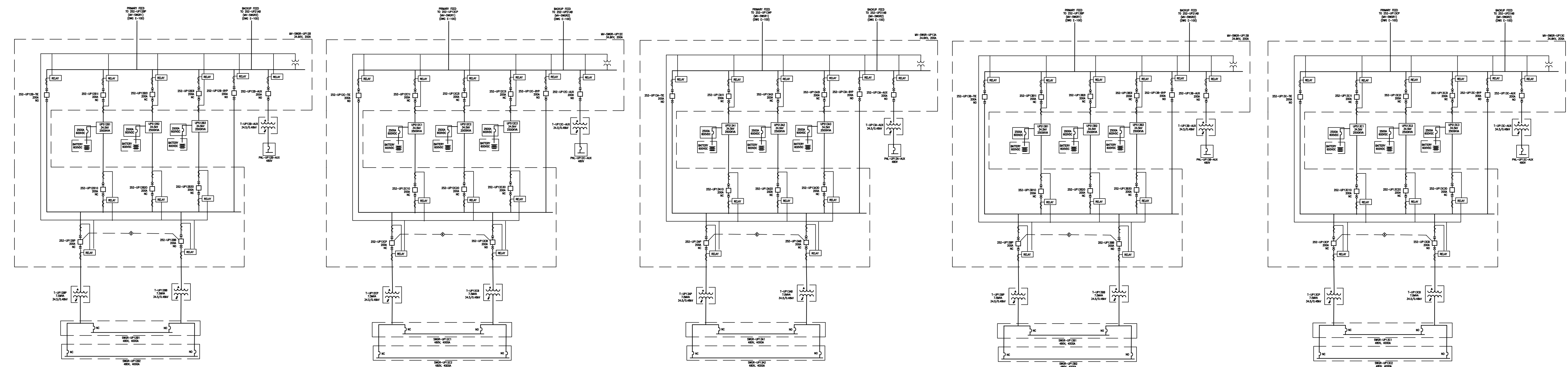
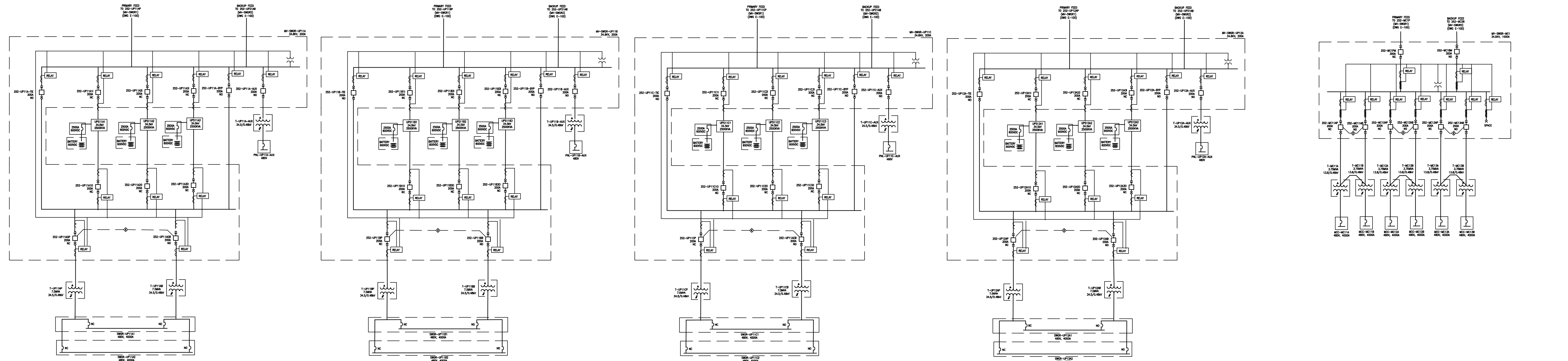
Docket Number - 26-SPPE-01

## **Supporting Document Appendix L**

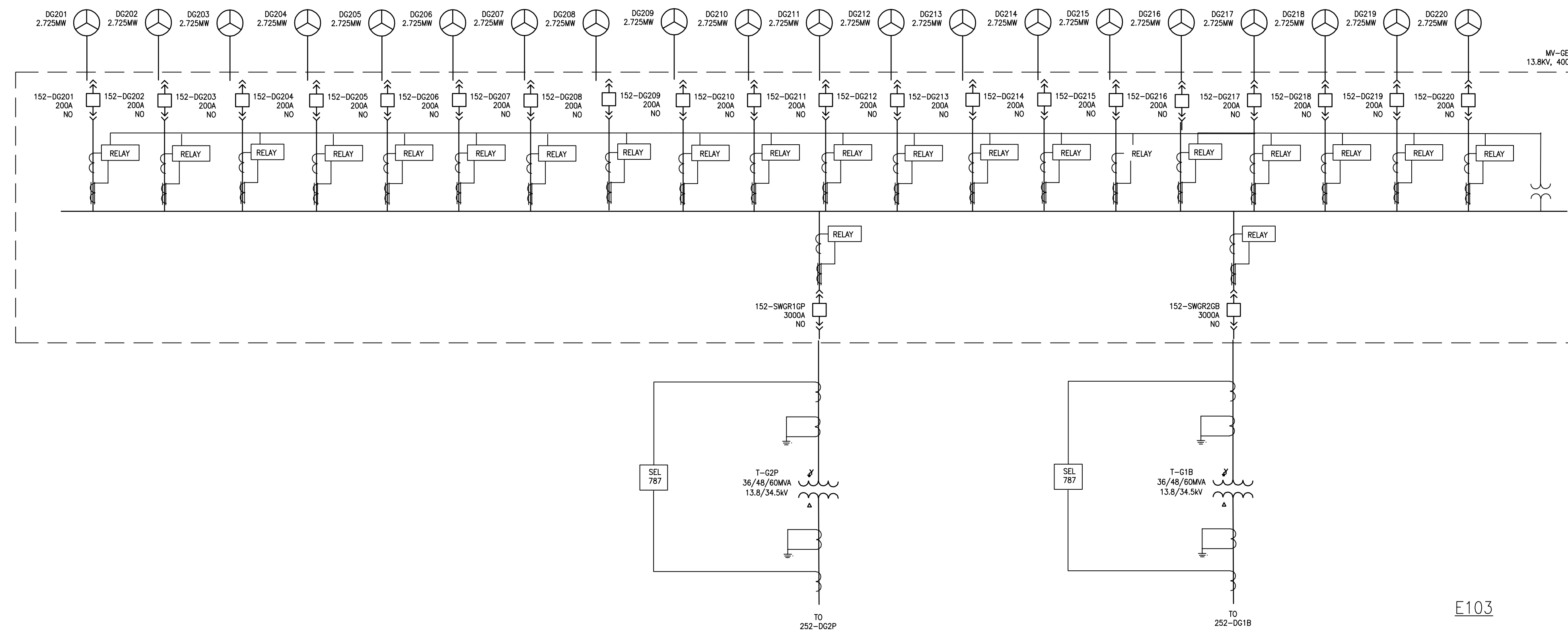
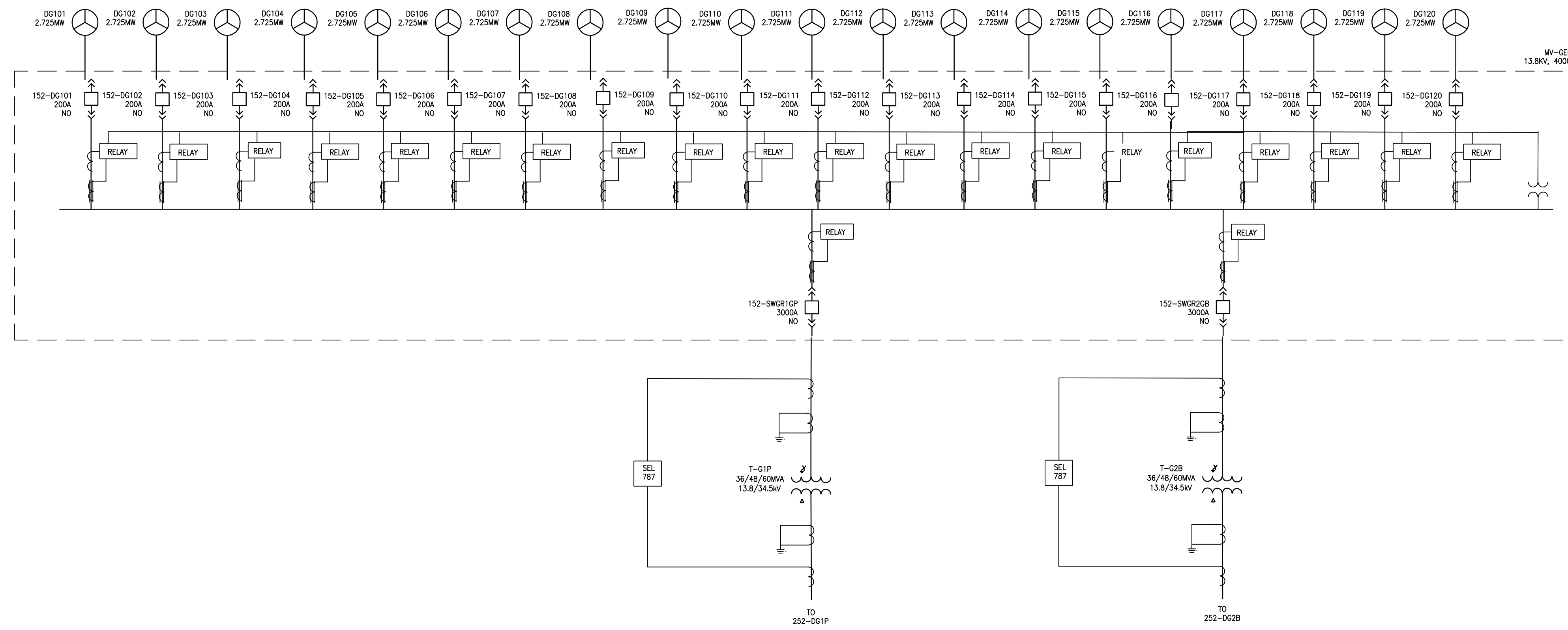
Subsection(s):

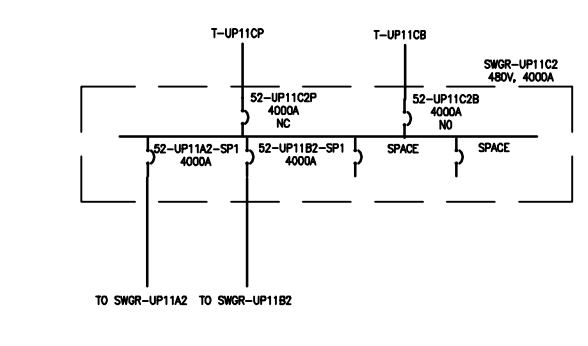
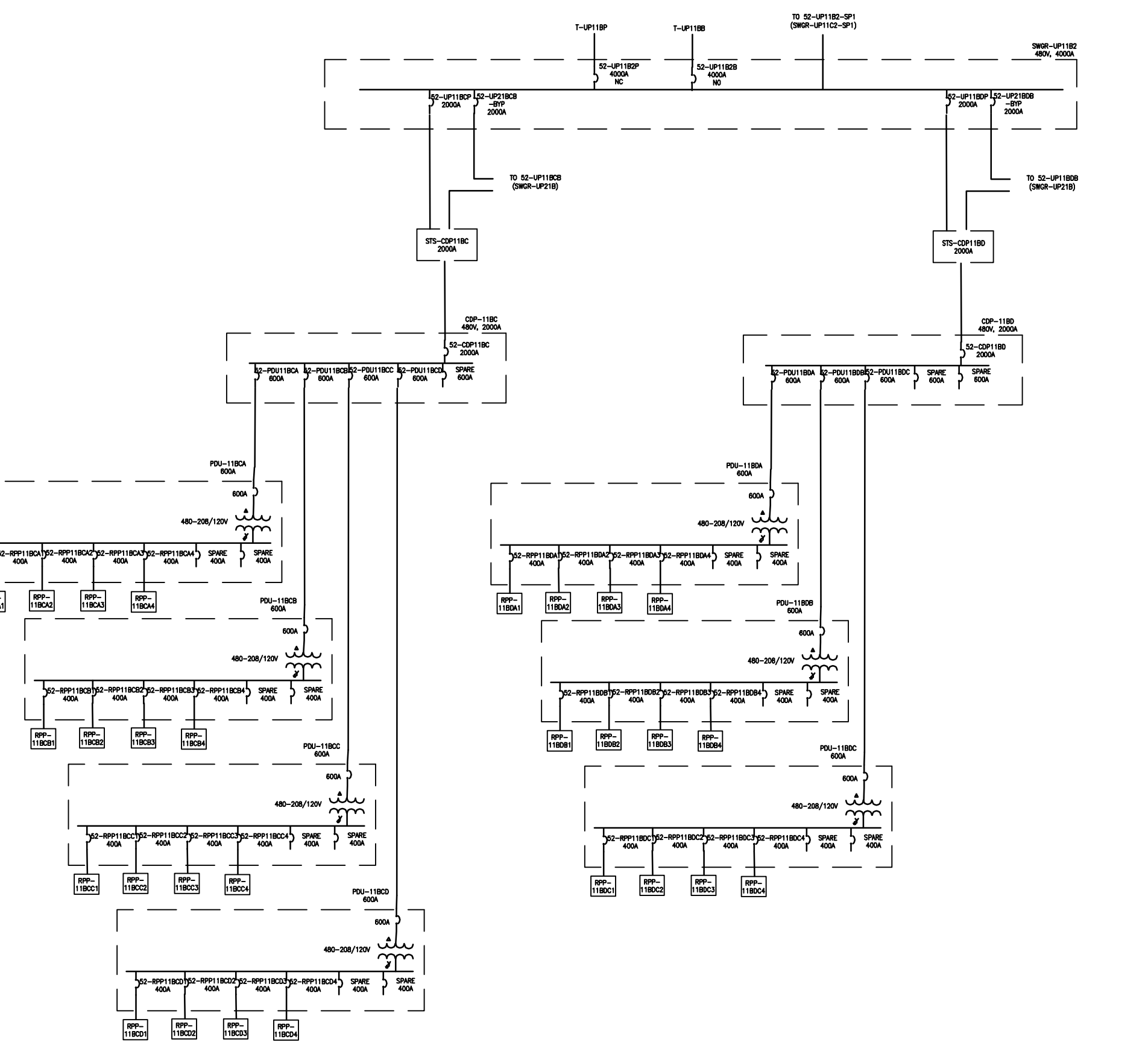
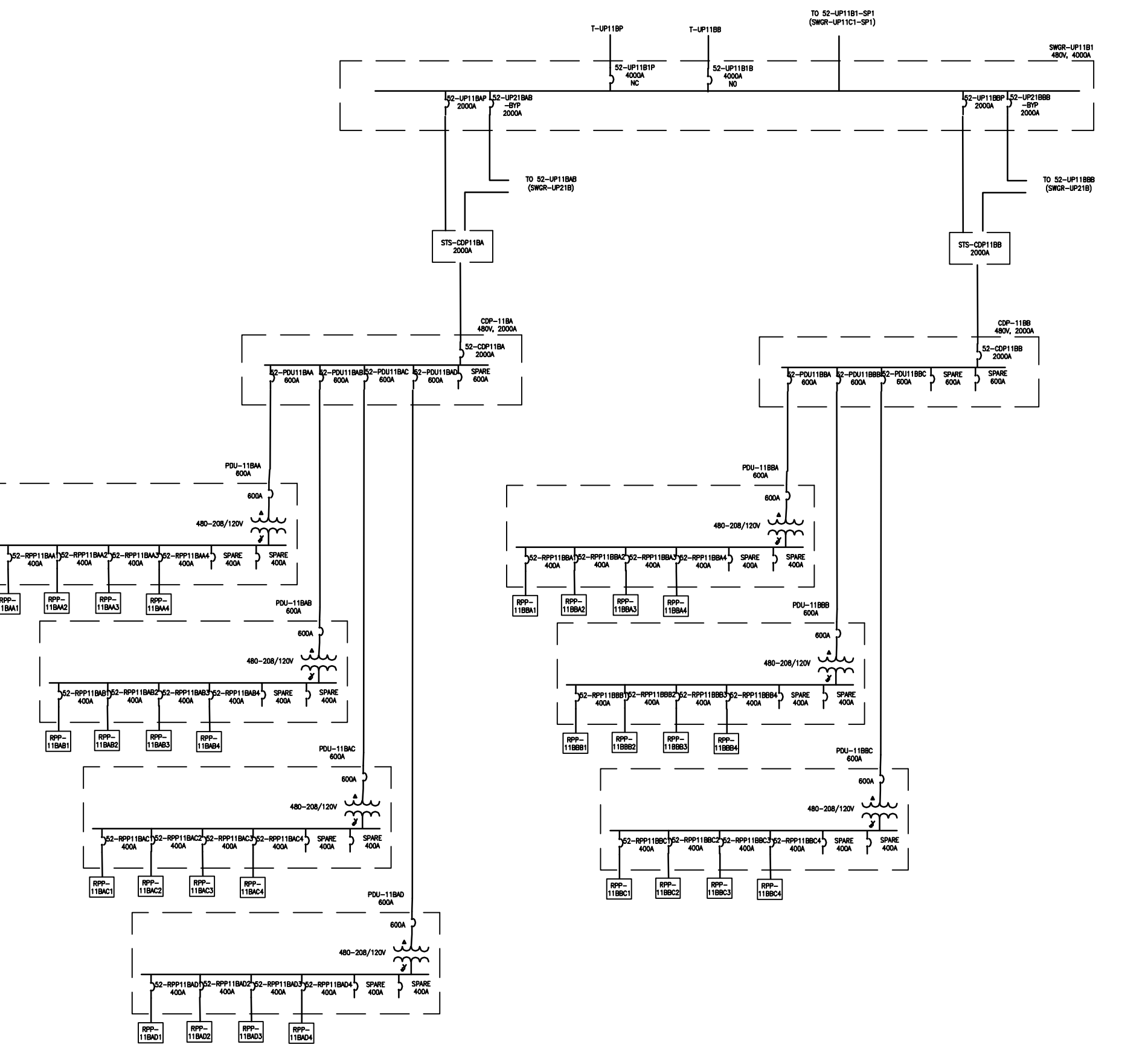
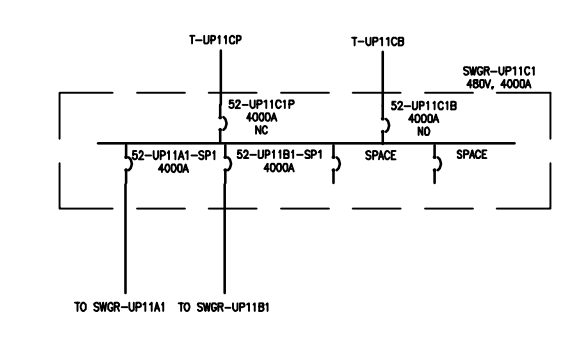
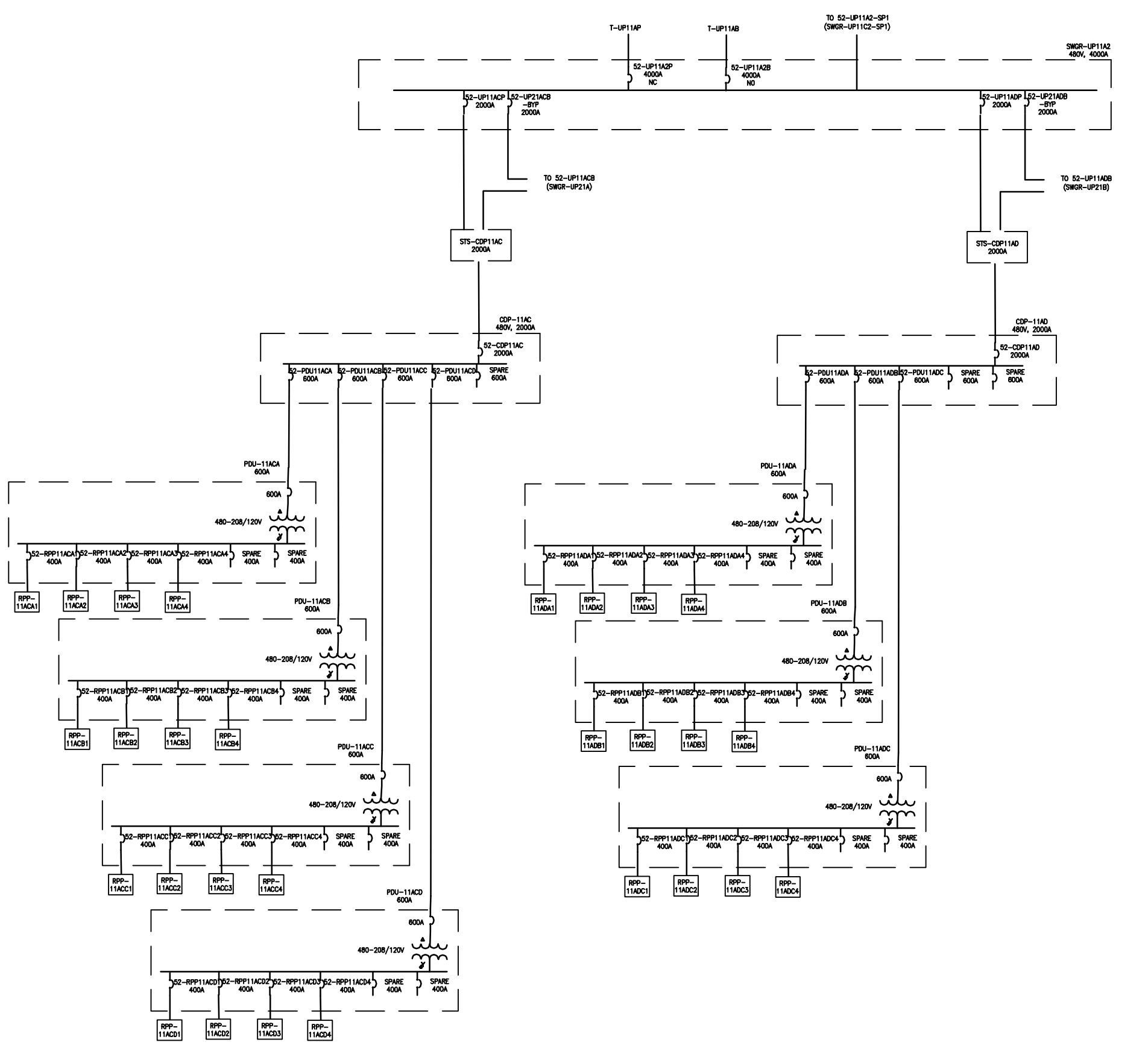
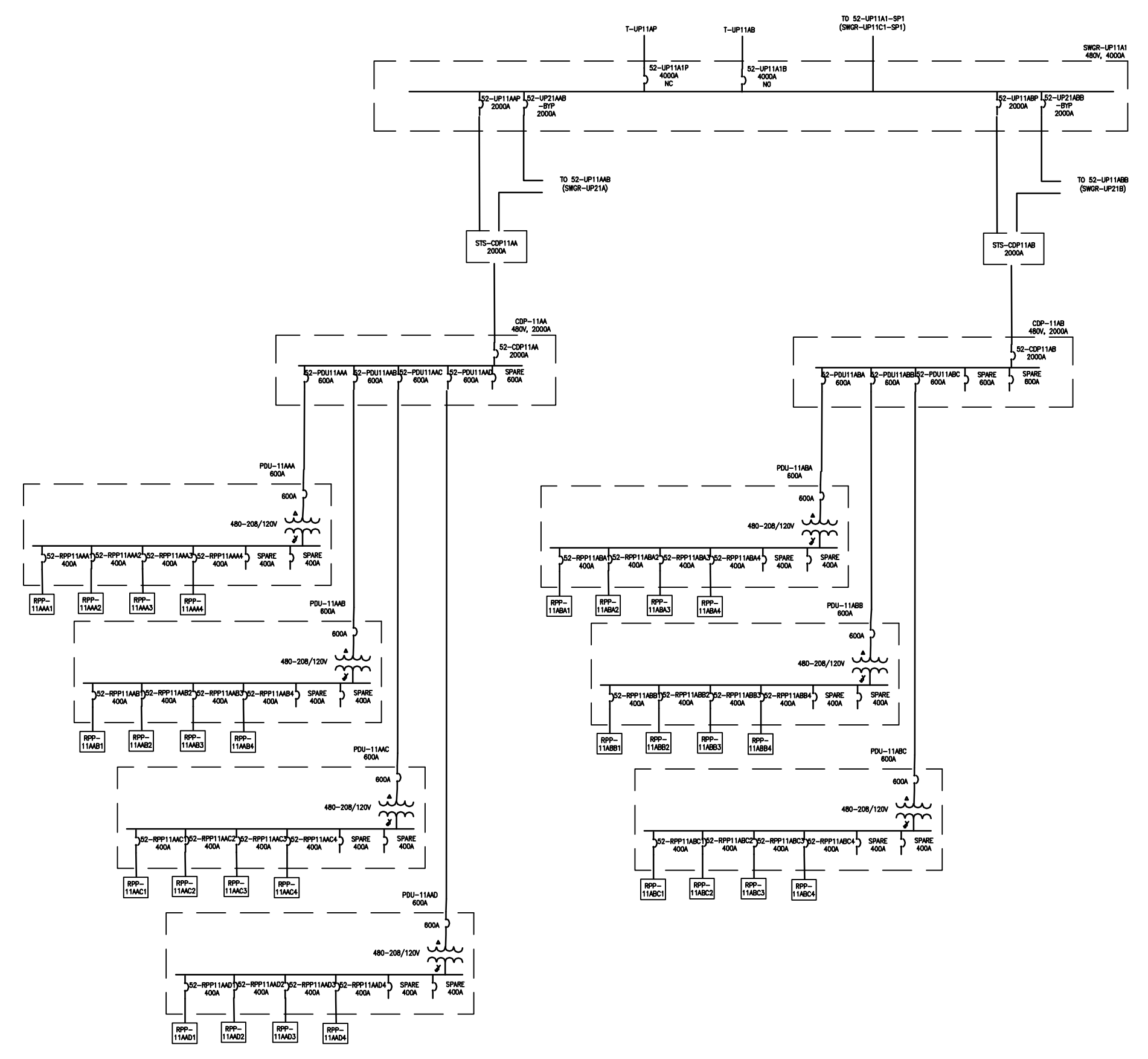
- L.1 - Project One-Line







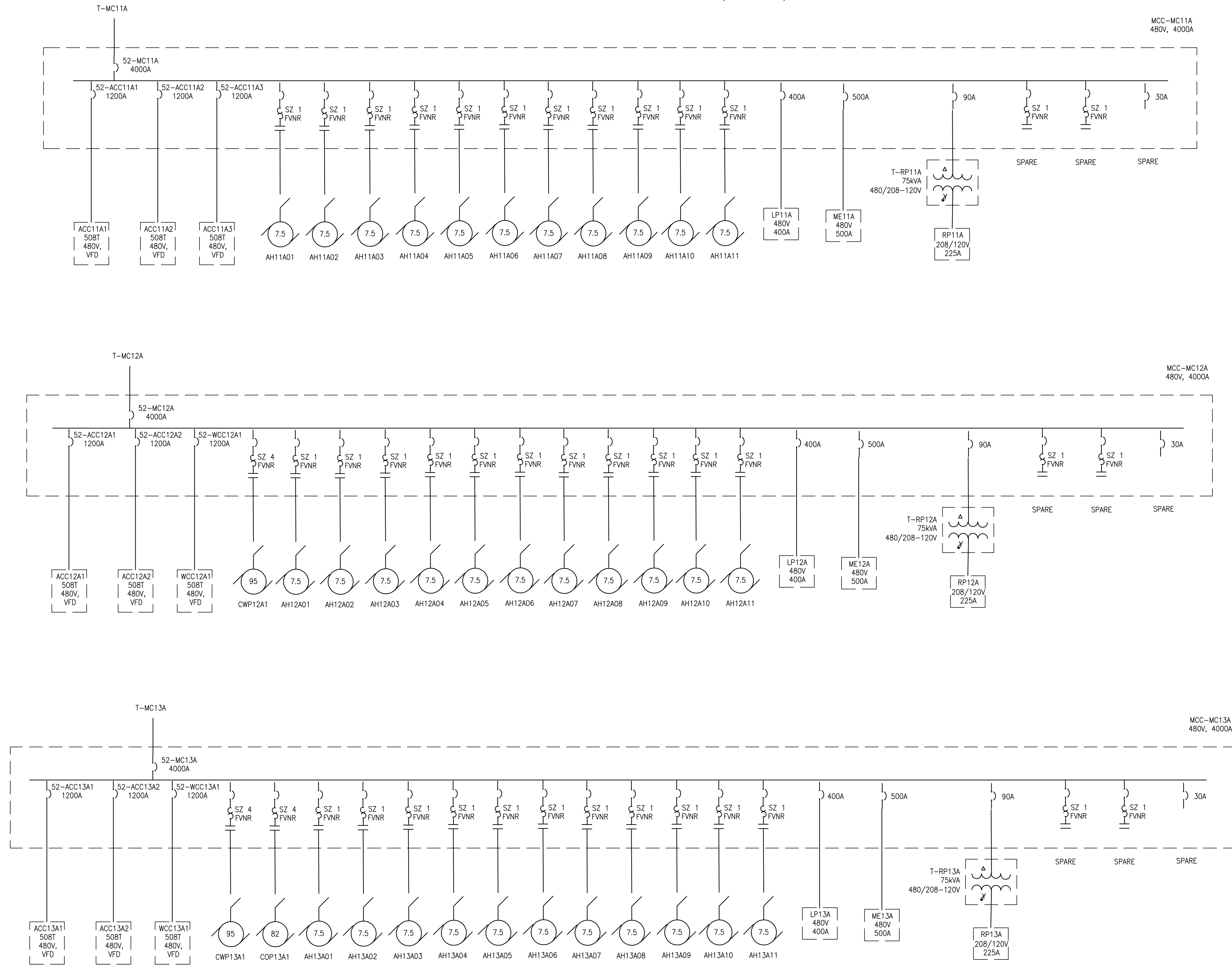




NOTES

1. SCHEDULE LOADS FOR SWR-UP111 IS TYPICAL FOR SWR-UP111, SWR-UP112, SWR-UP113, SWR-UP114, SWR-UP115, SWR-UP116, SWR-UP117, SWR-UP118, SWR-UP119, SWR-UP120, SWR-UP121, SWR-UP122, SWR-UP123, SWR-UP124, SWR-UP125, SWR-UP126, SWR-UP127, SWR-UP128, SWR-UP129, SWR-UP130, SWR-UP131, SWR-UP132, SWR-UP133, SWR-UP134, SWR-UP135, SWR-UP136, SWR-UP137, SWR-UP138, SWR-UP139, SWR-UP140, SWR-UP141, SWR-UP142, SWR-UP143, SWR-UP144, SWR-UP145, SWR-UP146, SWR-UP147, SWR-UP148, SWR-UP149, SWR-UP150, SWR-UP151, SWR-UP152, SWR-UP153, SWR-UP154, SWR-UP155, SWR-UP156, SWR-UP157, SWR-UP158, SWR-UP159, SWR-UP160, SWR-UP161, SWR-UP162, SWR-UP163, SWR-UP164, SWR-UP165, SWR-UP166, SWR-UP167, SWR-UP168, SWR-UP169, SWR-UP170, SWR-UP171, SWR-UP172, SWR-UP173, SWR-UP174, SWR-UP175, SWR-UP176, SWR-UP177, SWR-UP178, SWR-UP179, SWR-UP180, SWR-UP181, SWR-UP182, SWR-UP183, SWR-UP184, SWR-UP185, SWR-UP186, SWR-UP187, SWR-UP188, SWR-UP189, SWR-UP190, SWR-UP191, SWR-UP192, SWR-UP193, SWR-UP194, SWR-UP195, SWR-UP196, SWR-UP197, SWR-UP198, SWR-UP199, SWR-UP200.
2. SCHEDULE LOADS FOR SWR-UP112 IS TYPICAL FOR SWR-UP112, SWR-UP113, SWR-UP114, SWR-UP115, SWR-UP116, SWR-UP117, SWR-UP118, SWR-UP119, SWR-UP120, SWR-UP121, SWR-UP122, SWR-UP123, SWR-UP124, SWR-UP125, SWR-UP126, SWR-UP127, SWR-UP128, SWR-UP129, SWR-UP130, SWR-UP131, SWR-UP132, SWR-UP133, SWR-UP134, SWR-UP135, SWR-UP136, SWR-UP137, SWR-UP138, SWR-UP139, SWR-UP140, SWR-UP141, SWR-UP142, SWR-UP143, SWR-UP144, SWR-UP145, SWR-UP146, SWR-UP147, SWR-UP148, SWR-UP149, SWR-UP150, SWR-UP151, SWR-UP152, SWR-UP153, SWR-UP154, SWR-UP155, SWR-UP156, SWR-UP157, SWR-UP158, SWR-UP159, SWR-UP160, SWR-UP161, SWR-UP162, SWR-UP163, SWR-UP164, SWR-UP165, SWR-UP166, SWR-UP167, SWR-UP168, SWR-UP169, SWR-UP170, SWR-UP171, SWR-UP172, SWR-UP173, SWR-UP174, SWR-UP175, SWR-UP176, SWR-UP177, SWR-UP178, SWR-UP179, SWR-UP180, SWR-UP181, SWR-UP182, SWR-UP183, SWR-UP184, SWR-UP185, SWR-UP186, SWR-UP187, SWR-UP188, SWR-UP189, SWR-UP190, SWR-UP191, SWR-UP192, SWR-UP193, SWR-UP194, SWR-UP195, SWR-UP196, SWR-UP197, SWR-UP198, SWR-UP199, SWR-UP200.
3. LOADS FOR SWR-UP118 AND SWR-UP116 ARE TYPICAL FOR SWR-UP118, SWR-UP119, SWR-UP120, SWR-UP121, SWR-UP122, SWR-UP123, SWR-UP124, SWR-UP125, SWR-UP126, SWR-UP127, SWR-UP128, SWR-UP129, SWR-UP130, SWR-UP131, SWR-UP132, SWR-UP133, SWR-UP134, SWR-UP135, SWR-UP136, SWR-UP137, SWR-UP138, SWR-UP139, SWR-UP140, SWR-UP141, SWR-UP142, SWR-UP143, SWR-UP144, SWR-UP145, SWR-UP146, SWR-UP147, SWR-UP148, SWR-UP149, SWR-UP150, SWR-UP151, SWR-UP152, SWR-UP153, SWR-UP154, SWR-UP155, SWR-UP156, SWR-UP157, SWR-UP158, SWR-UP159, SWR-UP160, SWR-UP161, SWR-UP162, SWR-UP163, SWR-UP164, SWR-UP165, SWR-UP166, SWR-UP167, SWR-UP168, SWR-UP169, SWR-UP170, SWR-UP171, SWR-UP172, SWR-UP173, SWR-UP174, SWR-UP175, SWR-UP176, SWR-UP177, SWR-UP178, SWR-UP179, SWR-UP180, SWR-UP181, SWR-UP182, SWR-UP183, SWR-UP184, SWR-UP185, SWR-UP186, SWR-UP187, SWR-UP188, SWR-UP189, SWR-UP190, SWR-UP191, SWR-UP192, SWR-UP193, SWR-UP194, SWR-UP195, SWR-UP196, SWR-UP197, SWR-UP198, SWR-UP199, SWR-UP200.

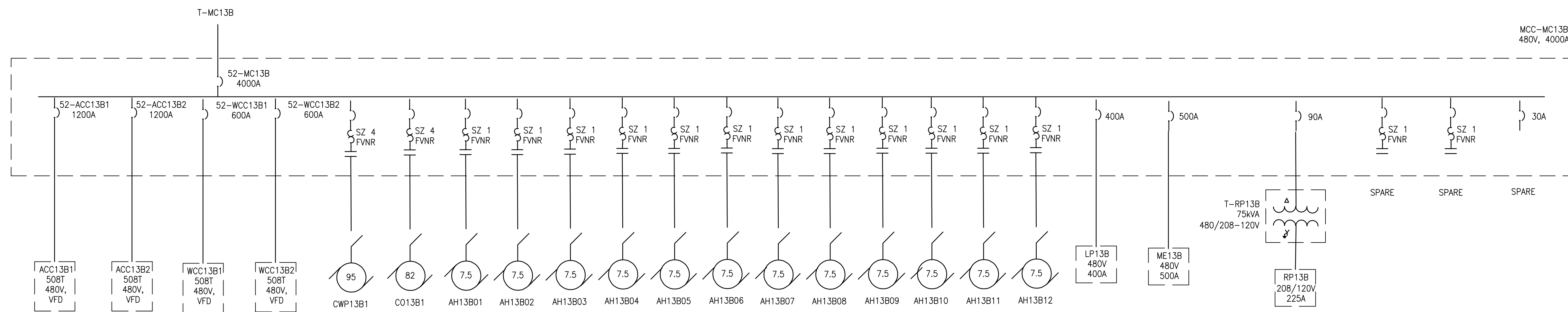
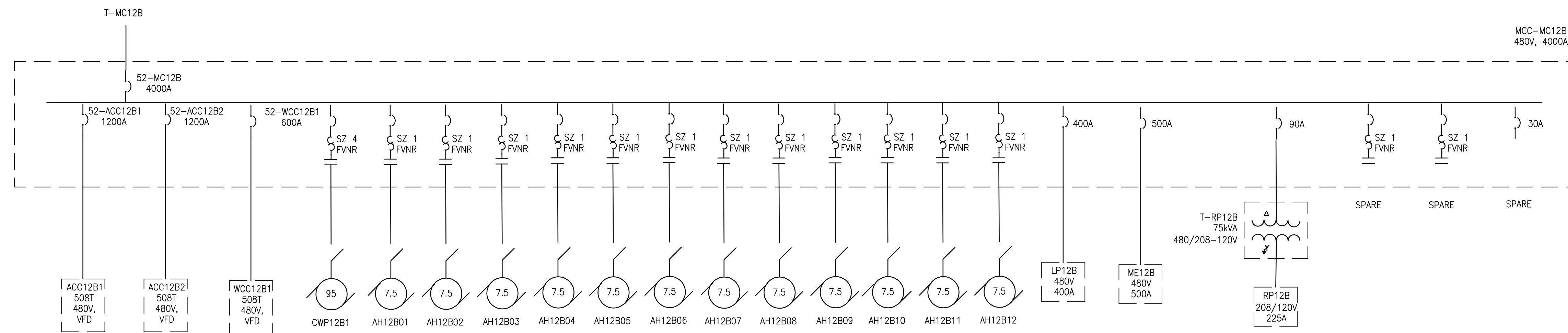
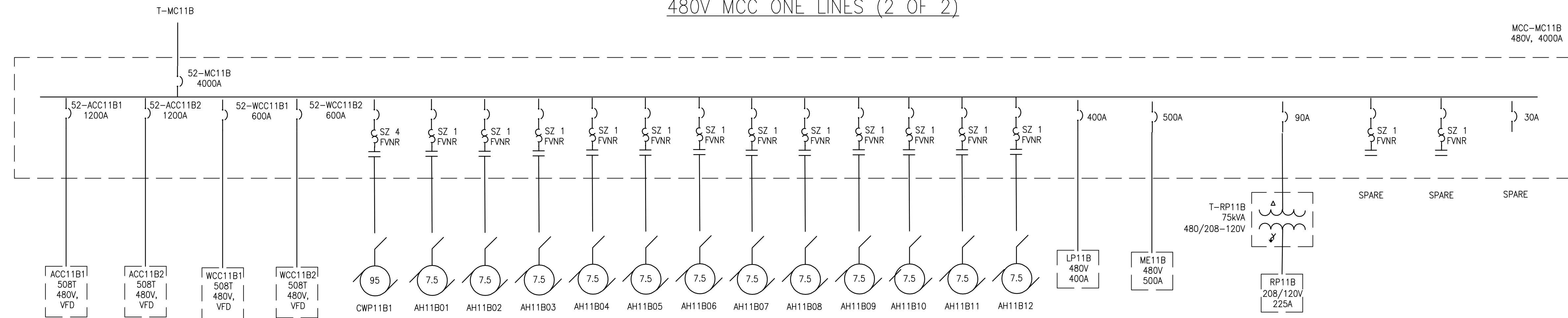
480V MCC ONE LINES (1 OF 2)



NOTES:  
1. UNIT 2 SHALL BE SIMILAR TO UNIT 1.

E111

480V MCC ONE LINES (2 OF 2)



NOTES:  
1. UNIT 2 SHALL BE SIMILAR TO UNIT 1.

E112

# **RB INYOKERN DATA CENTER**

Application for Small Power Plant Exemption (SPPE)

*Inyokern, Kern County, California*

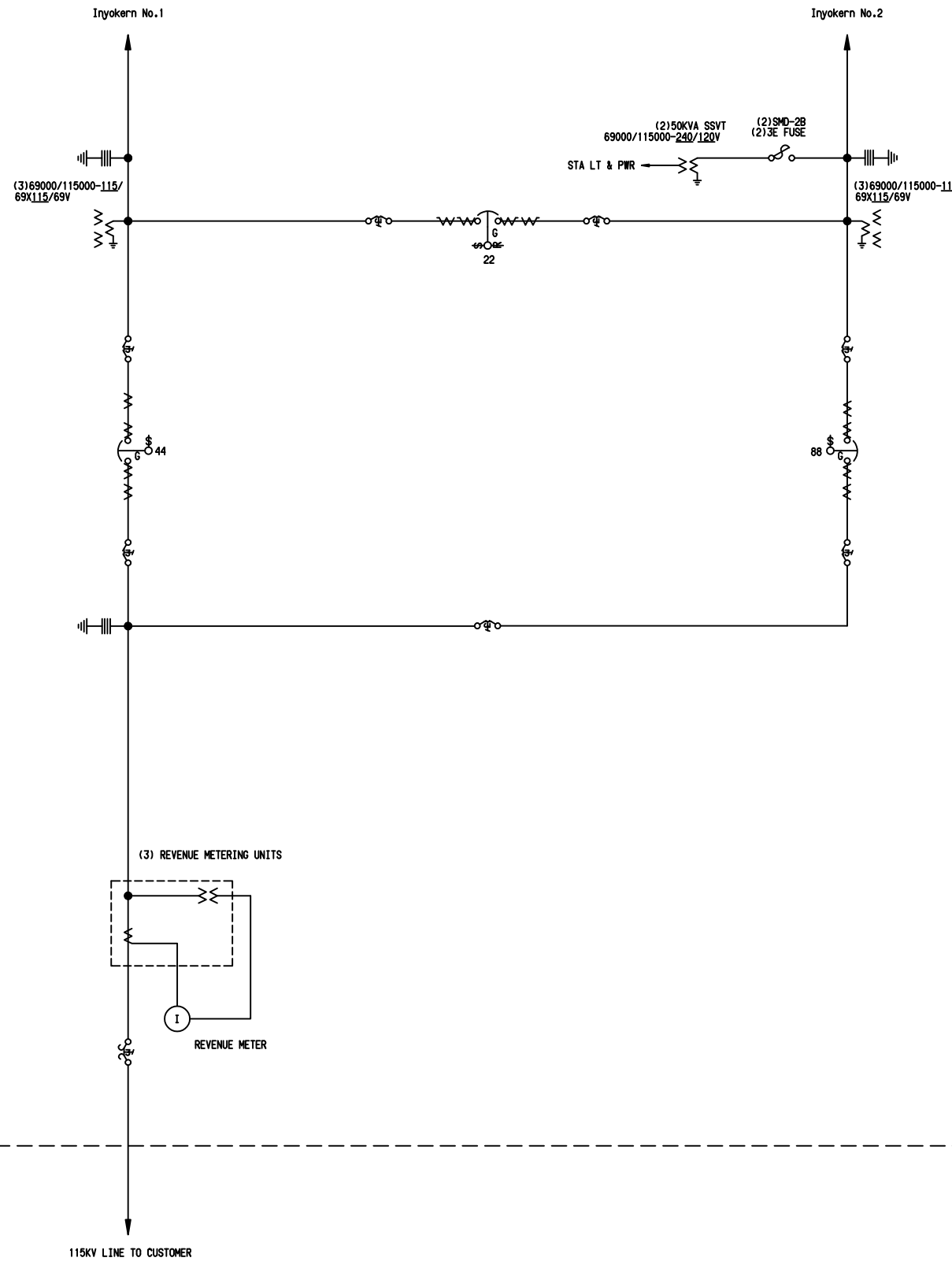
Docket Number - 26-SPPE-01

## **Supporting Document Appendix L**

Subsection(s):

- L.2 - POI Location

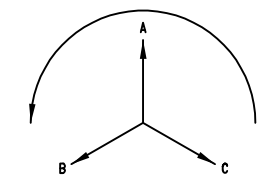




GPS COORDINATE: \_\_\_\_\_  
 LOCATION MAP: \_\_\_\_\_  
 CITY OF \_\_\_\_\_

TABLE OF CBS							
NUMBER	KV	MAKE	TYPE	AMP	LINE SIDE	BUS SIDE	DUTY
22,44,88	115	TBD	TBD	TBD	TBD	TBD	40KA

- NOTES:
- 60 CELL BATTERY.
  - SUPERVISORY CONTROL & DATA ACQUISITION (SCADA) VIA ENERGY MANAGEMENT SYSTEM (EMS) THRU REMOTE TERMINAL UNIT (RTU).
  - TELEMETERED QUANTITIES VIA ENERGY MANAGEMENT SYSTEM (EMS).  
 115KV LINE.....3I,3V,W,VAR



SCE  
 CUSTOMER

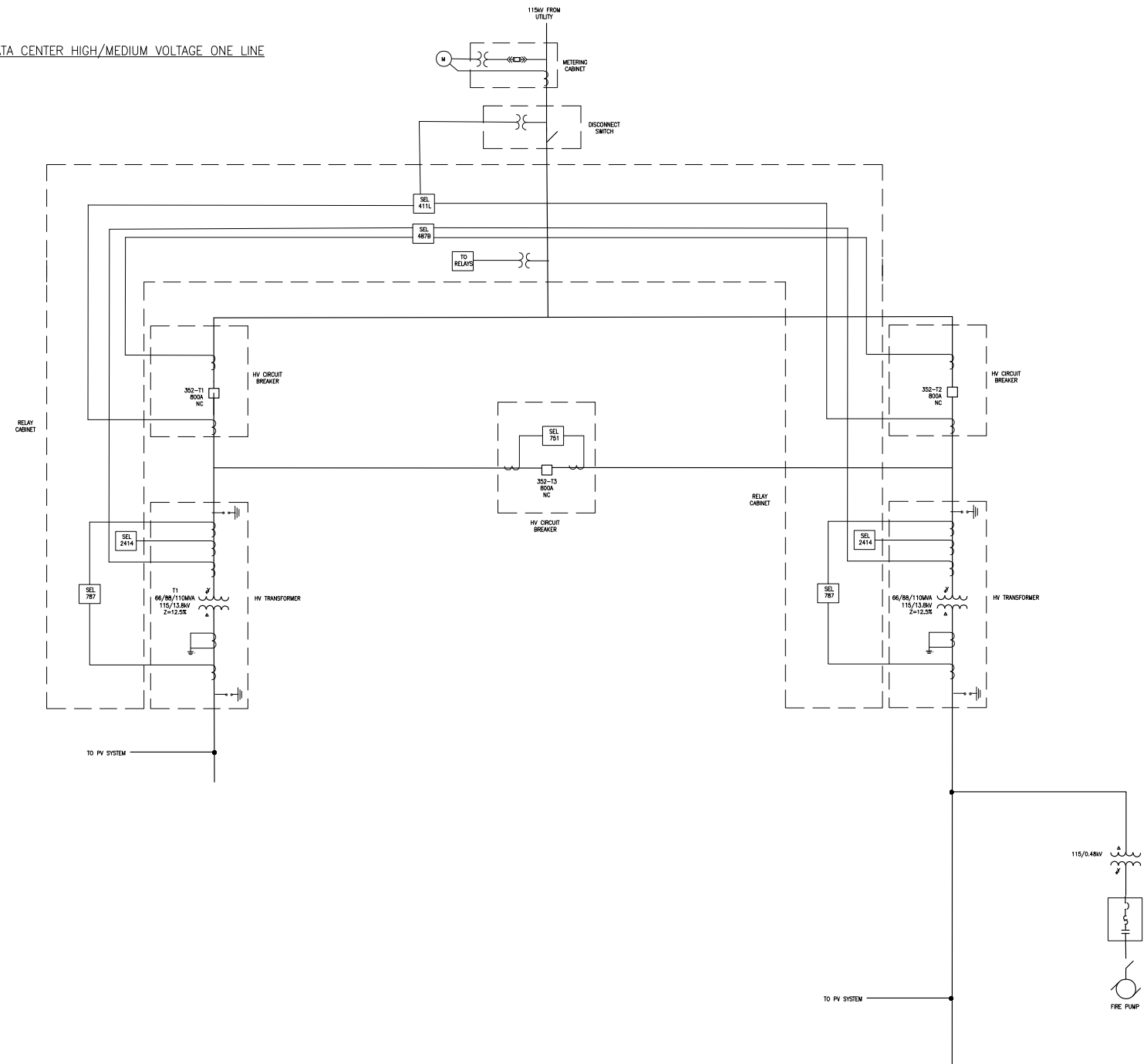


REFERENCE DRAWINGS	NO.	REVISIONS	DATE	SAP NO	SUPV	APPROVED	ENGR	CK'D	MADE	P.E.	NO.	REVISIONS	DATE	SAP NO	SUPV	APPROVED	ENGR	CK'D	MADE	P.E.		
												0	FOR R&L CAPITAL DATA CENTER MOS	10/8/2025								

ELECTRICAL CONSTRUCTION STATION - SCE INTERNAL -	FILE NAME:
ONE LINE FOR R&L CAPITAL DATA CENTER MOS	SHEET REV.
SCALE: NONE	

10/08/2025  
 F. HAN

INYOKERN, CA DATA CENTER HIGH/MEDIUM VOLTAGE ONE LINE



# **RB INYOKERN DATA CENTER**

Application for Small Power Plant Exemption (SPPE)

*Inyokern, Kern County, California*

Docket Number - 26-SPPE-01

## **Supporting Document Appendix L**

Subsection(s):

- L.3 - Substation One-Line

Inyokern 115 kV Compact Substation Redesign  
Preliminary Line Relocation

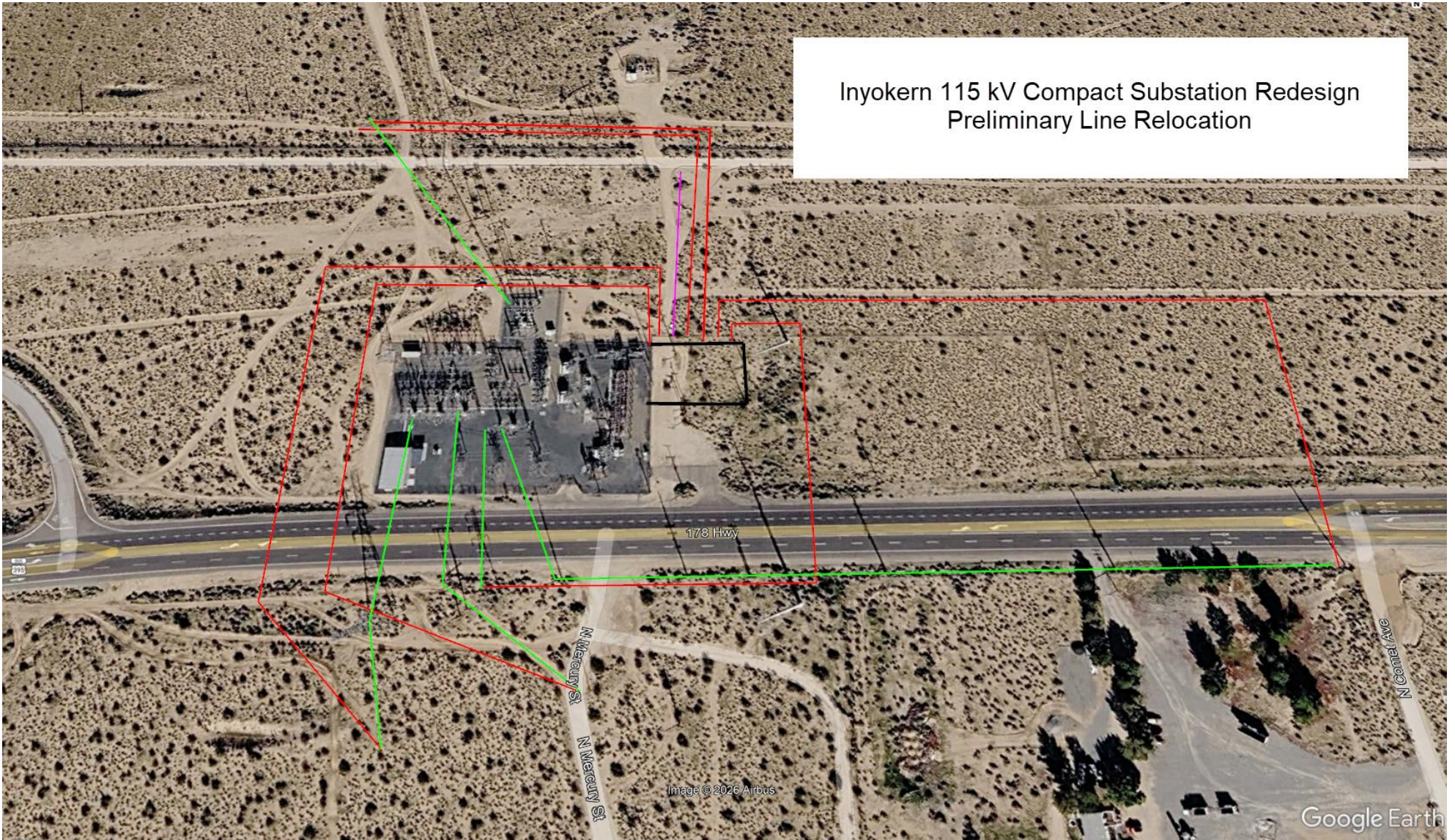


Image © 2026 Airbus

Google Earth

Inyokern- New R& L Capital Inc.- 115 kV Line Route 1  
Inyokern- New R& L Capital Inc.- 115 kV Line Route 2

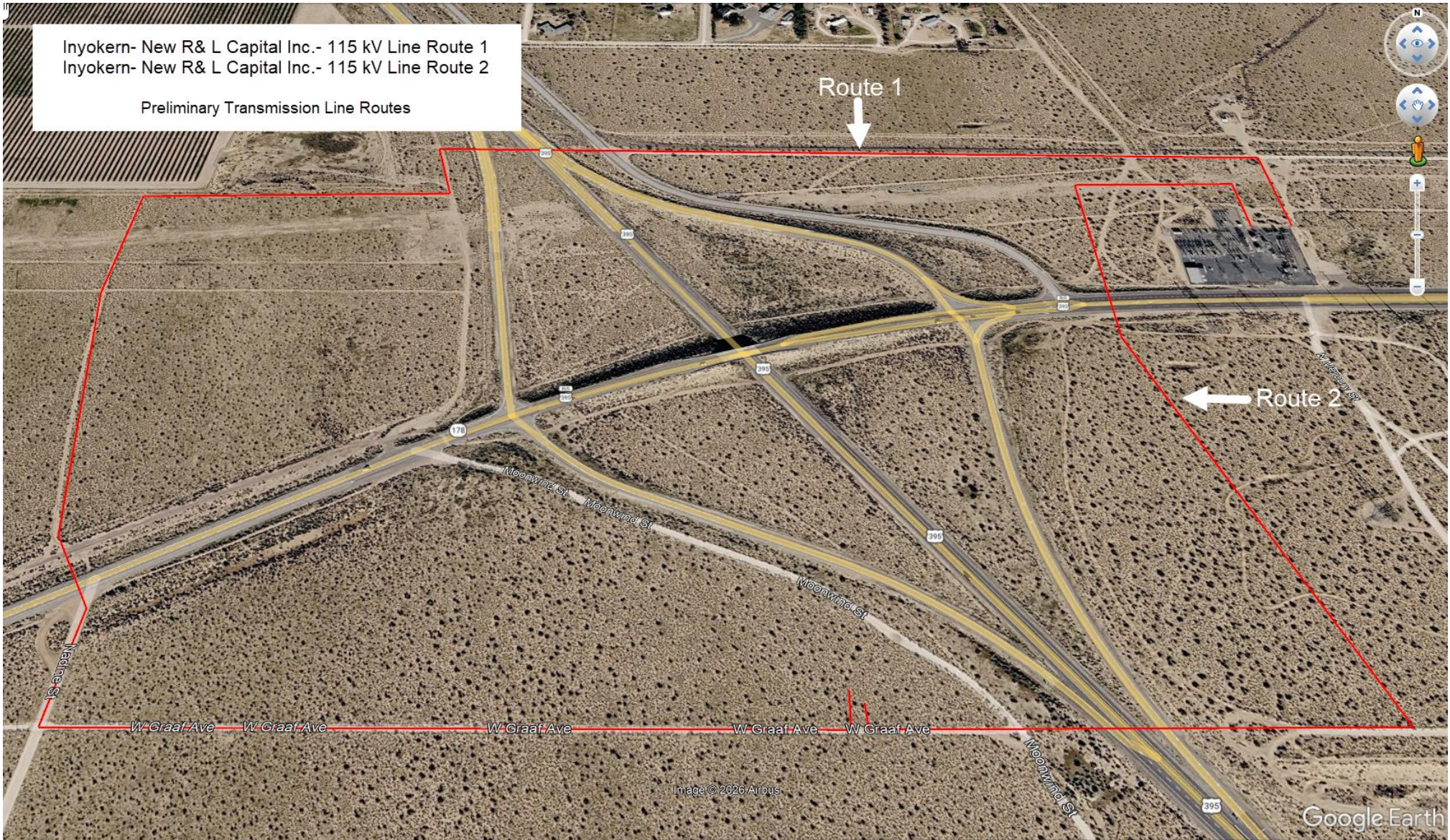
Preliminary Transmission Line Routes

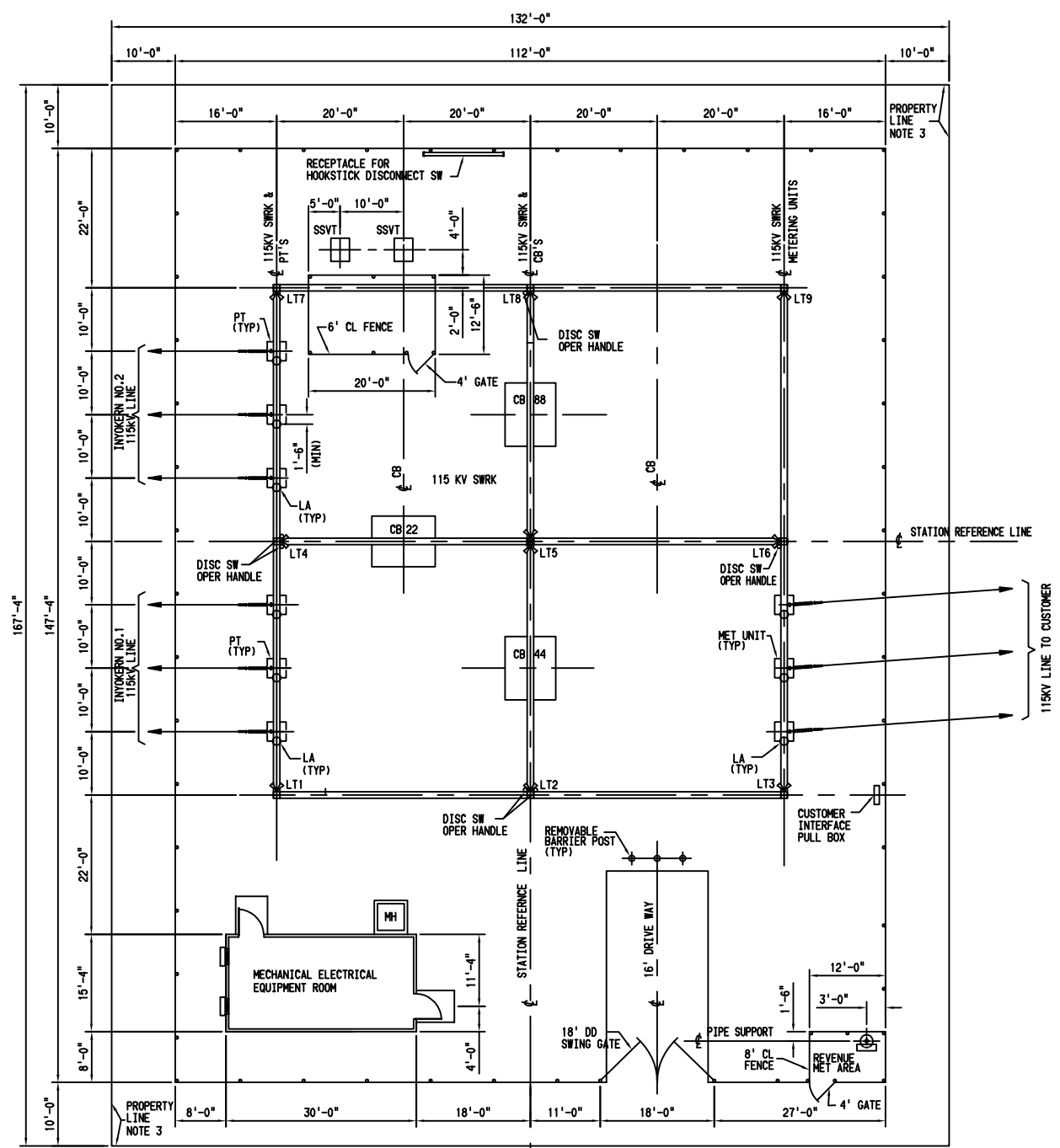
Route 1

Route 2

Image © 2026 Airbus

Google Earth





- NOTES:**
1. OVERALL SUBSTATION DIMENSIONS AND ITS CONFIGURATION MAY DIFFER DEPENDING ON SITE LIMITATIONS AND EQUIPMENT CONFIGURATIONS.
  2. STANDARD 115KV LINE IS OVERHEAD; HOWEVER, CAN BE UNDERGROUND PER CUSTOMER'S REQUEST OR CITY REQUIREMENT.
  3. SUBSTATION PROPERTY LINES WILL VARY SIGNIFICANTLY DEPENDING ON THE SIZE AND SHAPE OF THE SITE. A PERIMETER BUFFER OF 10 FT OR AS NEGOTIATED IS REQUIRED WITH THE CUSTOMER SHALL BE MAINTAINED BETWEEN THE ENCLOSED SUBSTATION AND THE SCE PROPERTY LINE ON ALL SIDES, EXCEPT FOR COMMON (SHARED) FENCE (S).



REFERENCE DRAWINGS	NO.	REVISIONS	DATE	SAP NO	SUPV	APPROVED	ENGR	CK'D	MADE	P.E.	NO.	REVISIONS	DATE	SAP NO	SUPV	APPROVED	ENGR	CK'D	MADE	P.E.		
												0	FOR R&L CAPITAL DATA CENTER MOS	10/08/2025								

ELECTRICAL CONSTRUCTION STATION — SCE INTERNAL —	FILE NAME:
PLOT PLAN FOR R&L CAPITAL DATA CENTER MOS	SHEET REV.
SCALE: _____	



