

DOCKETED

Docket Number:	25-OIIP-01
Project Title:	Informational Proceeding on Tribal Energy Sovereignty and Tribal Affairs
TN #:	269390
Document Title:	Tribal OIIP Regional Roundtable 5 - Chemehuevi
Description:	N/A
Filer:	Davina Whitethorne
Organization:	California Energy Commission
Submitter Role:	Commission Staff
Submission Date:	4/1/2026 1:51:41 PM
Docketed Date:	4/1/2026



**Regional Roundtable 5: CEC Order Instituting an
Informational Proceeding on Tribal Affairs and
Tribal Energy Sovereignty**

March 18, 2026

Meeting Logistics

- Public Comment Opportunities
- Principles of a Respectful Meeting

GAVIN NEWSOM
GOVERNOR



CHRISTINA E. SNIDER
TRIBAL ADVISOR

CALIFORNIA TRUTH & HEALING COUNCIL

PRINCIPLES FOR RESPECTFUL MEETINGS

Agenda for Today

- Morning Registration
- Welcome and Opening Remarks
- Tribal Consultation
- Tribal Energy Sovereignty
- Tribal Cultural Resource Considerations Regarding Clean Energy Development
- Lunch Break
- Best Practices for Tribal Energy Grants
- Tribal Energy Equity Indicators
- Improving Energy Project Development Processes
- Closing Remarks

Welcome and Opening Remarks

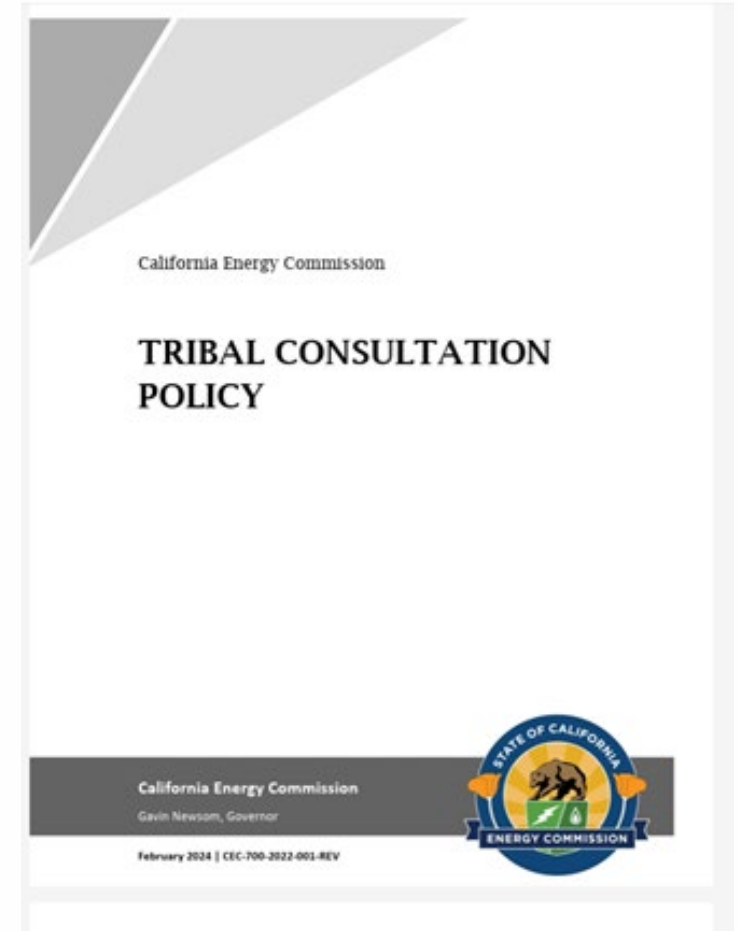


Tribal Consultation Policy



CEC Consultation Policy

- Adopted 2014
- Administrative Update February 2024
- California Natural Resources Agency Tribal Consultation Policy November 2012 (Recently updated 9/2025)
- Assembly Bill (AB) 923



CEC Tribal Consultation Policy Overview

- Identifies the responsibilities and organization of the CEC
- Designation of the CEC Tribal Liaison and Assistant Tribal Liaisons
- Affirms CEC Tribal Liaison participation in the Tribal Liaison Committee
- Outlines CEC's tribal consultation process
- Mechanisms for exchanging confidential information
- Stipulates filing and disclosure requirements concerning CEC tribal communications
- Suggests ways for fostering long-term relationships

Examples From Other Consultation Policies

- Adequate preparation
- Mutual respect
- Relationship building
- Co-management
- Traditional Ecological Knowledge
- Importance of cultural resources and restoration
- Transparency and on-going communication

What would Tribes like to See in CEC's Consultation Policy? (slide co-developed 03/18/26)

- Important to find balance between economic growth and protection of the environment and cultural resources
- Important to remember that without water from Lake Havasu, there would be no development of Southern California; important to realize sacrifices made by Tribes
- Should be funding mechanism to bring Tribal leaders and members to CEC in Sacramento (travel dollars for Tribes) to participate in conversations and policy planning
- Consulting around the nexus of energy and water
- Tribes have policies and ordinances – distinct Tribal policies should be recognized in a consultation policy; ensure Tribal Council/leaders understand what the CEC is doing.
- Including both wider meetins with staff/tribal members and consultation, which is with Tribal Council
- Bring in energy groups (Tribal led) to discuss awareness of industry and what is possible
- Capital Program to fund operations and maintenance and facilitate communication and outreach to Tribes
- Ensure Tribes are part of the planning process and any interconnection projects/programs; invite Tribes to planning meetings to ensure awareness

How to Implement CEC's Tribal Consultation Policy (slide co-developed 03/18/26)

- Important to defer to leadership; every Tribe is different.
- Supporting the travel costs for Tribes in addition to CEC site visits.
- Identifying people in each Tribe to carry work forward. Maintaining consistency even when leadership changes. Have Tribal liaisons within the Tribes to ensure communication avenues remain open and available
- Important for leadership to put the needs of the people first.
- Have more meetings and conversations for Tribes to share information to learn about the different needs of the Tribes
- Having awareness of what renewables are; how important they are to a Tribe; cost and the various energy policies associated with new technologies and energy options. Finding out funding options and/or feasibility of instituting new projects. More awareness around land impacts of renewables.
- Battery storage awareness for Tribes
- Additional insight from other government agencies, bring other voices into conversations
- Important to continue providing learning opportunities and reach all community members
- What does more educational resourced from CEC look like for Tribes?
 - Open workshops on various topics – CEC could bring in **trusted** experts, educators, consultants, contractors, developers, folks with built-in curriculum to share (ensure the experts are neutral and not just selling their business)
 - Start with conversations, then expand into workshops or seminars/trainings
 - What is a policy? How does it work, how could it be implemented?
 - Bring food and fun
- Would like to see CEC's effort expanded to other agencies; continued conversations
- Communicate impacts of policies to Tribes often.
- Trainings are important but should not take away from consultations. Consultations can inform trainings.
- Important to explain the difference among agencies and distinguish what each agency is responsible for what.
- Including staff members (ie THPOs, environmental dept) in consultations where appropriate.

Ahe'hee' - Thank You!



Tribal Energy Sovereignty



History of Resolution Committing to Support Tribal Energy Sovereignty





Components of Resolution Committing to Support Tribal Energy Sovereignty

Goals

- **support** tribal self-determination, self-government, and **energy sovereignty**;
- **enhance tribal consultation** and participation in decision-making related to clean energy planning and development in California;
- **improve the protection of sacred sites**, cultural resources, and access to ancestral lands;
- **increase tribal access** to federal and state energy funding opportunities;
- **provide opportunities** for economic diversification, career development; and investment in renewable energy for California tribes;



Components of Resolution Committing to Support Tribal Energy Sovereignty

Actions

- enter into memoranda of understanding (MOUs) with interested California tribes to establish **frameworks for collaboration** on key energy policy and planning initiatives;
- develop **capacity building** and technical assistance resources to support clean energy transitions, advance the development of tribal energy enterprises, and increase access to clean energy programs;
- increase **tribal set-asides** within State programs and funding opportunities;
- partner with California tribes to pursue **federal funding** opportunities;
- prioritize **community benefits** within programs, policies, and planning initiatives;
- enhance **land-use considerations** in clean energy planning for the protection of tribal cultural resources;
- increase cultural awareness and **knowledge of tribal priorities** among Commission staff to better inform the development of programs, policies, and planning initiatives.



Components of Resolution Committing to Support Tribal Energy Sovereignty

Actions Related to Land

- provide assistance to facilitate California tribal government access to existing **information concerning land that may be of interest** to California tribes, including the environmental condition of the land;
- encourage and support opportunities for entities with whom the Commission conducts business with or otherwise regulates or interacts, including, but not limited to, publicly owned utilities, to provide California tribes **access, use, and co-management of lands** and to work cooperatively with California tribes that are interested in acquiring lands in excess of State needs; and
- encourage and support local agencies, as defined by Government Code section 54221(a), with whom the Commission interacts, to **transfer ownership of surplus lands** with which California tribes have a cultural connection or are within a California tribe's ancestral land.

Where we are today...

State Funding Eligibility Expanded

- Energy Conservation Assistance Act (ECAA)

Capacity Funds

- California Clean Energy Policy and Planning Program (CCEPP)
- Offshore Wind Capacity Fund

Tribal Set-Asides

- Tribal Specific Equitable Building Decarbonization Program (Tribal EBD)

Removing Funding Barriers

- Tribal Electric Vehicle Infrastructure, Planning, and Workforce Training and Development

Tribal Engagement in Planning

- Offshore Wind
- SB 100

Advancing in Tribal Energy Sovereignty State Partnership Frameworks



Structural Models for Tribal Energy Sovereignty

TACE



Tribal Advocacy Council on Energy

What does tribal energy sovereignty look like for your tribe? (slide co-developed 03/18/26)

- Independence from rising costs and instability of economic factors, especially around fuel cost. Ability to underground transmission.
- Funding for tribally-led plans. Ensure Tribes are involved in the conversations around planning. Tribes have insight into what resources and options are available and have their own energy objectives. Primary source: Solar fields, above ground energy delivery systems; fossil fuels a secondary source.
- Goal is to have reliable power that is managed and run by Tribes.
- Develop a plan to create own composting capabilities for agriculture.
- Support a path forward in planning regarding increase in usage of energy and water.
- Energy sovereignty ideas are shaped by past memories of outages and more recently, increases in energy costs.
- Ability to produce own power.
- Need for funding for residential home batteries to help manage rates.
- Sovereignty means Tribes not having to pay for power

Additional feedback continued on next slide

What does tribal energy sovereignty look like for your tribe? (slide co-developed 03/18/26 - continued)

- Program to attach residential solar batteries on homes; additional funding to do this.
- Funding to help support cost of energy around extreme weather (heat and/or cold).
- Broader inclusion for power safety programs and carve outs for rural tribal communities.
- Flexibility or expansion in state language within policies so that they can be modified to correspond with tribal laws or needs (especially around extreme events). Recognizing that there are going to be situations that come up for tribe and creating legal language for that.
- When tribes aren't specifically included in the policy, it's left up to interpretation. Explicitly include tribes in programs.
- Affordability and affordable solutions; have plans that incorporate feedback from agencies (assistance to help members get hooked up to power sources)
- Self-determination and control; Recognizing that tribes are a nation within a nation, not just looped into DEI initiatives
- Managing energy future and economic development
- Infrastructure and resilience; Cultural and environmental alignment
- Supporting Tribal Energy Resource Agreements (TERAs) and Tribal Energy Development Organizations (TEDOs)
- Protecting Mother Earth should be a focus
- Taking over existing power systems is challenging because would be incurring the costs for updating older systems.
- Increasing electricity access for unelectrified homes.

What would be the most critical thing to include in the draft Tribal Energy Sovereignty Policy? What can the CEC do to better support tribal energy sovereignty goals? (slide co-developed 03/18/26)

- Supporting ways Tribe can leverage is water rights – potential of pumped storage or create hydroelectric power. Utilize own water to create energy
- Make funding available with no strings attached.
- Demonstration projects: sometimes feels like sometimes tribes are a target for untested technologies. When it doesn't work, tribes stuck with it. When project didn't work, there should be funding to remove these projects.
- More technical assistance, not just for energy space but for grant writing. Funding for energy plans. Assisting with feasibility studies.
- Create delivery infrastructure to distribute water, irrigate farms, provide for community
- Accessing information from Native Heritage Commission – ensure information is up-to-date and making sure communication avenues are open.
- Expand communication and ensure information gets to all community members
- Energy Master Plan – how does a Tribe become energy independent and better understand what is available.
- Explore collaboration and crisscross of funding from other agencies to put towards energy projects
- Flexibility is key around policy language and funding opportunities

Morning Break



Tribal Cultural Resource Considerations Regarding Clean Energy Development



Introduction

- Power plants can affect tribal cultural resources
- Project planning: limits time, consultation, flexibility
- Advance planning: encourages time, consultation, flexibility
- Two previous examples of advance planning
- Overview of potential advance planning process

Background on DRECP

- Desert Renewable Energy Conservation Plan
- Lead Agency: Bureau of Land Management
- Cultural Resource Assistance: California Energy Commission
- Resource Management and Energy Development (10.8M Acres)
- Driven by federal laws and regulations
- Needed to assess cultural resource sensitivity

Summary of Data-gathering Initiative

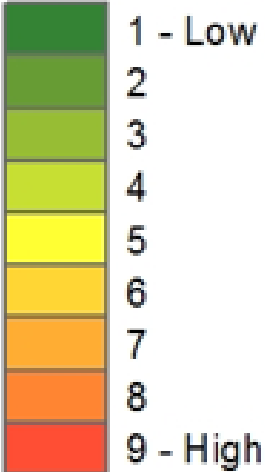
1. One-mile grid over the DRECP area
2. 10% random sample of 1-mile squares
3. Records searches within the sampled squares
4. GIS: archaeological resource locations and attributes
5. Total archaeological resources in sample squares: 4,057

Summary of DGI Methods (continued)

6. Square sensitivity based on frequency and density
7. Kriging estimated archaeological sensitivity of unsampled squares
8. GIS processing abstracts resource locations
9. GIS: mapped places in public ethnographies
10. Compiled other supplementary GIS layers

DGI Archaeological Sensitivity Map

Archaeological Resource Sensitivity



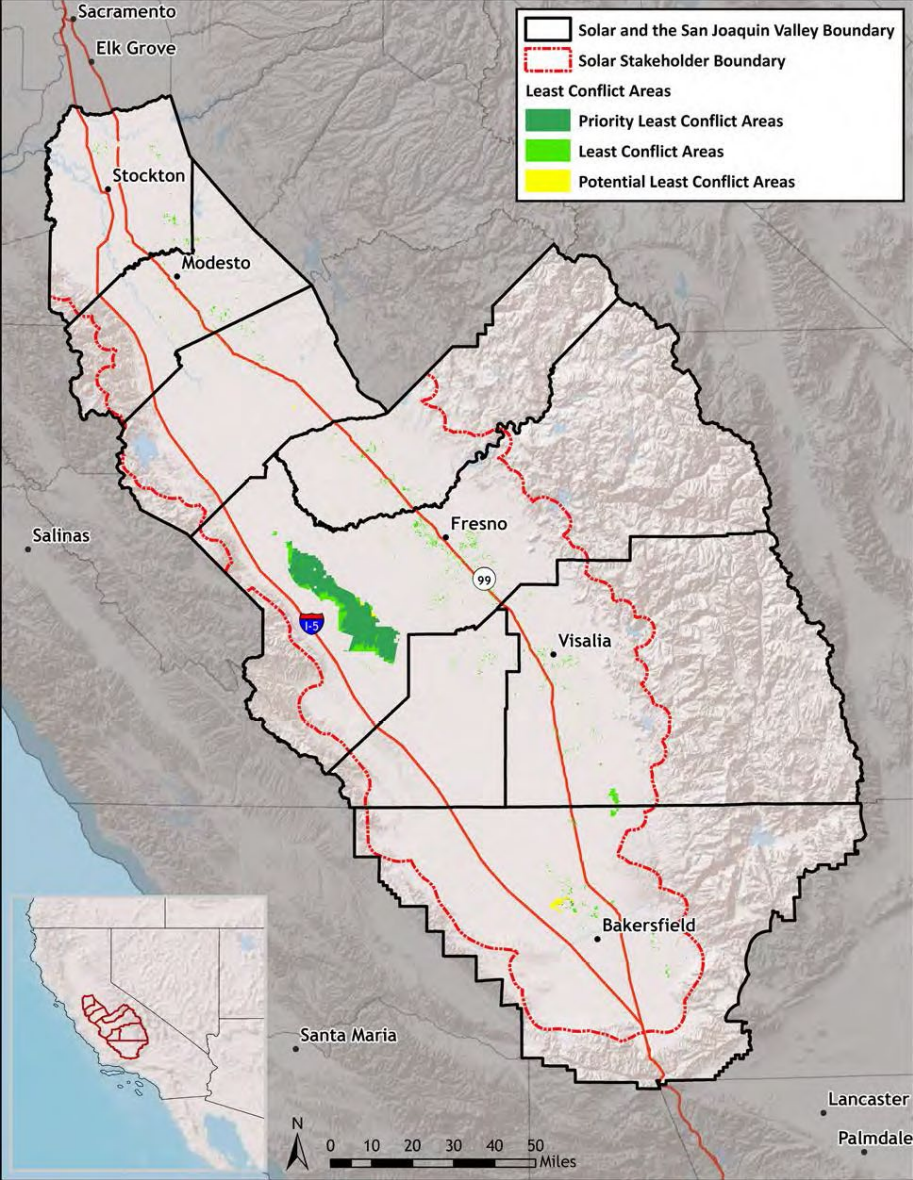
San Joaquin Valley Solar

- **Least-Conflict Areas for San Joaquin Valley Solar**
- Agencies, agriculture, bio & tribal conservation, industry
- Covered 9.5M acres across eight counties
- Not driven by laws or regulations
- Tribes affected and steward important knowledge

San Joaquin Valley Solar: Cultural and Tribal Cultural Resource Methods

1. Initiated tribal consultation
2. Convened virtual and in-person meetings
3. Documented written and verbal comments
4. Tribally led information-gathering and GIS mapping
5. Integrated tribal data into other data
6. Tribal review of the outcome
7. Published approved results (*A Path Forward*)

San Joaquin Valley Solar: Tribally Identified Least-Conflict Areas

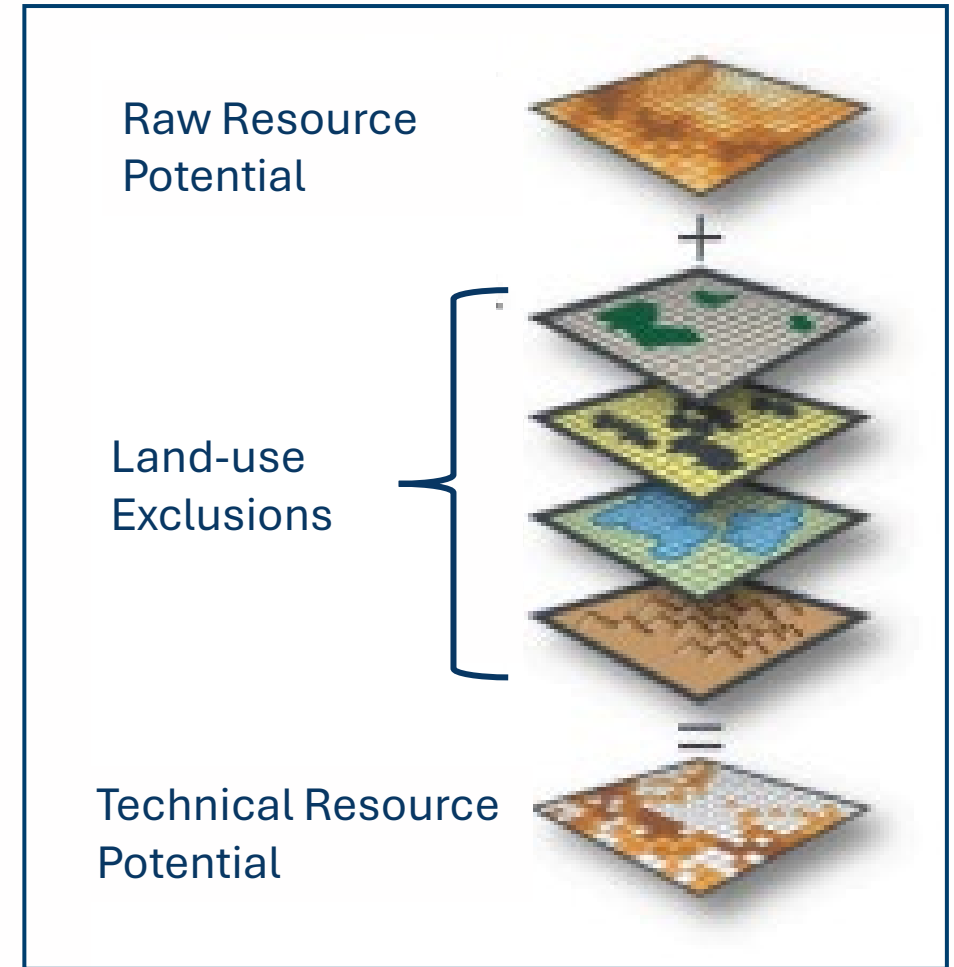


Introduction to CEC Land Use Screens

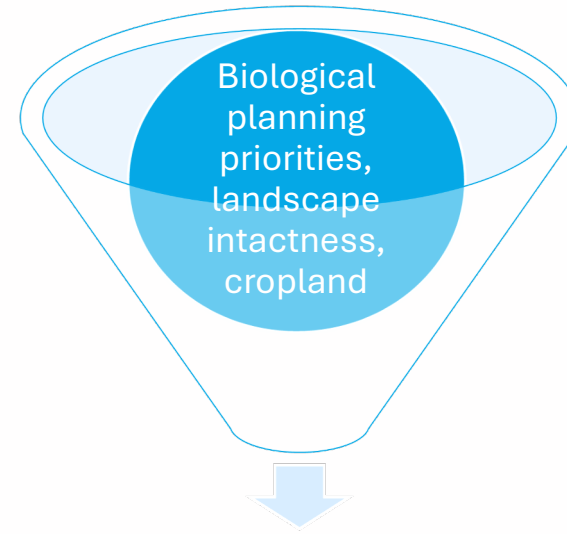
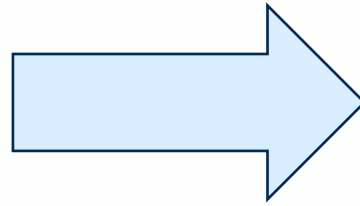
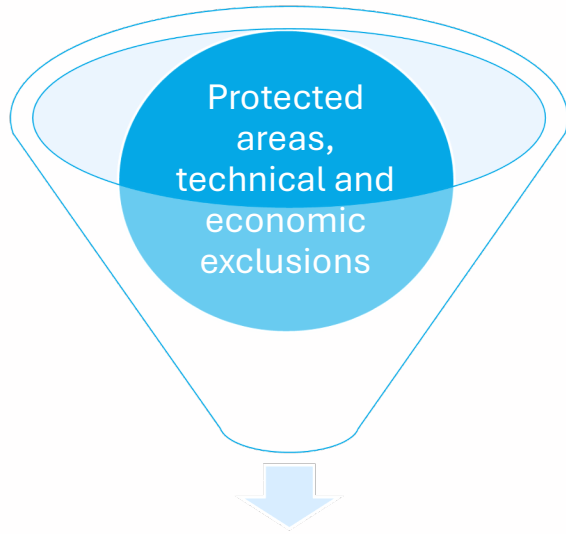


Land Use Screens for Electric System Planning

- Achieving climate goals requires significant clean and renewable energy development (e.g., solar, wind) and rapid build rates
- Environmental and land use “screens”
 - Identify at a high level where build is feasible (technical resource potential)
 - Highlight areas that may face possible constraints and conflicts, including areas of environmental sensitivity, conservation, and other land uses (e.g. cropland)
 - Inform state planning efforts, including IRP/TPP and SB 100
- Screens are landscape-level planning information: intended to inform high-level estimates of renewable build, not specific project locations
- Last major update of CEC Land Use Screens in 2023: [Report and Data Viewer](#) covering solar, wind, and conventional geothermal resources



Screens Example: Identifying Technical Resource Potential (Solar)



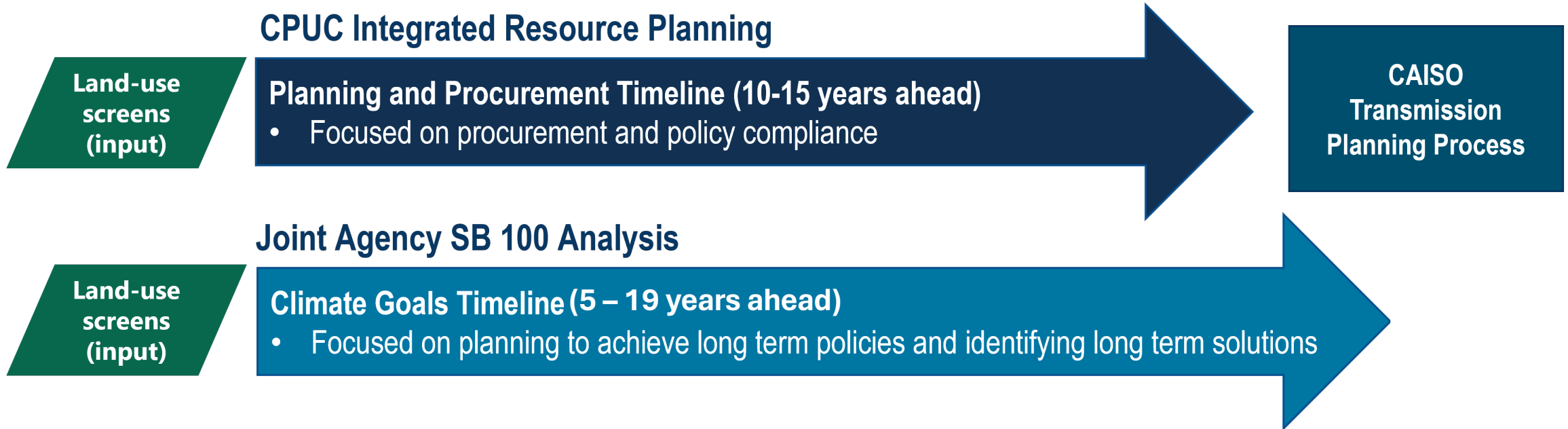
Solar technical resource potential after applying these “base” exclusions



Lower-Implication land: Solar technical resource potential after applying additional environmental constraints



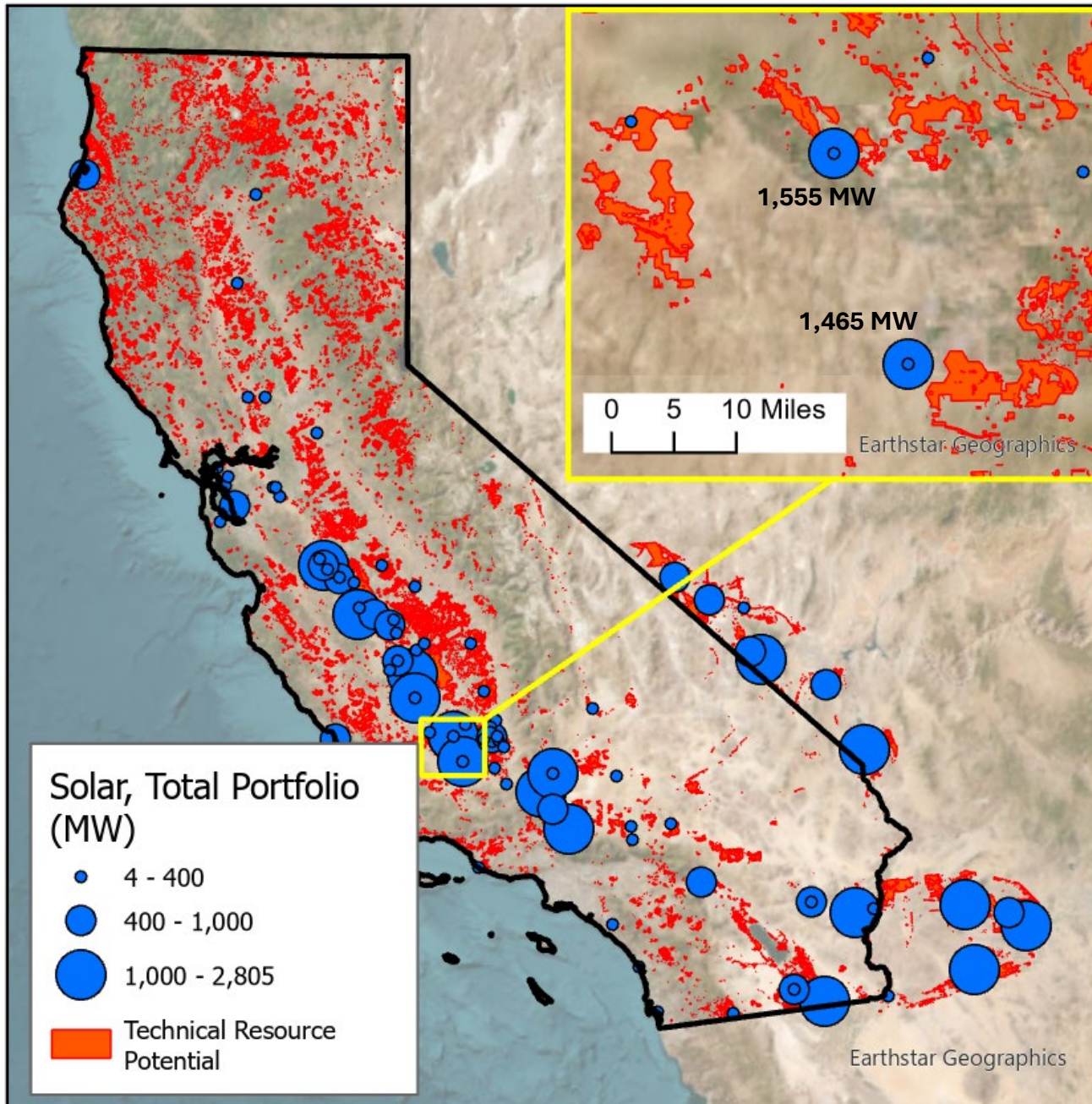
Land Use in State Resource Planning



Land-use screens:

- Increase transparency in planning processes
- Support early identification of issues or barriers to development, which in turn supports long-lead time transmission investments

Example of Land Use Data in State Resource Planning: 2026-2027 TPP 2036 Base Case Portfolio, Solar Resources



- This MW “mapping” is used in the CPUC Integrated Resource Planning (IRP) process to guide development of new transmission
- Informed by land use and environmental information from the screens
- Does not currently explicitly account for tribal cultural resources
- See slide 4 of [this deck](#) onwards for more information on how land use data and other factors are used to determine mapping

Opportunities for Participation in Land Use Planning

These public energy planning processes incorporate the land use screens

- CPUC Integrated Resource Planning (IRP) Process
 - Annual cycle, first workshop in Spring 2026
 - More information [here](#) and [here](#); subscribe [here](#)
- CEC Land Use Screens Update
 - Notice will be posted to a public [CEC docket](#); stay tuned

Comparing Approaches: Status Quo

Typical Project Planning Sequence

- Developer's due-diligence planning: variable tribal outreach
 - Developer often options project site
- The developer prepares an application
 - Sometimes the first agency viewing
- Permitting agencies conduct their environmental impact review
 - Tribal consultation is most intense here

Comparing Approaches: Advance Planning

- Can reduce schedule-related pressure
- Can increase consultation frequency and quality
- Reduces pressure associated with optioned land
- Fewer conflicts about confidential information
- Can reduce risks for tribes and developers

What Are Some Benefits to Using Tribal Land Use Screens?

Slide co-developed 03/18/26

- Is there priority or acknowledgement of water sources in these methods? How do we reduce evaporation loss in conjunction with energy development (solar fields, etc.)?
- Need to align resources when applying land use planning.
- A focus on conservation, include grey water implementation and capture systems
- Water and energy are dependent – land planning needs to focus on both resources
- Could assist Tribes when completing grant applications as supporting documentation.

What Are Some Drawback to Using Tribal Land Use Screens?

Slide co-developed 03/18/26

- Details of advance planning matter. Data has to be reliable, accessible, dependable.
- Should not replace consultation.
- Confidentiality concerns.
- Overemphasis on technological solutions risks losing human element. Also need to physically be on the land.

Could this approach be improved?

Slide co-developed 03/18/26

- The use of land use screens will never replace Tribal consultations
- Tools are helpful but should only supplement conversations with Tribes
- Maps improve any type of reporting
- It should have tables that specify certain data this is recorded/shown in map
- Have GIS involved each time
- Data has to be reliable, dependable and correct
- Important to remember the human element; do not rely too much on technology; there are concerns that GIS and other technological approaches will replace the human element to the detriment of tribal cultural resources
- Nothing should replace people to people contact when gathering information
- Important to see the land in-person – decisions can be made after viewing the land and surrounding areas

Additional feedback continued on next slide

Are other methods and approaches needed?

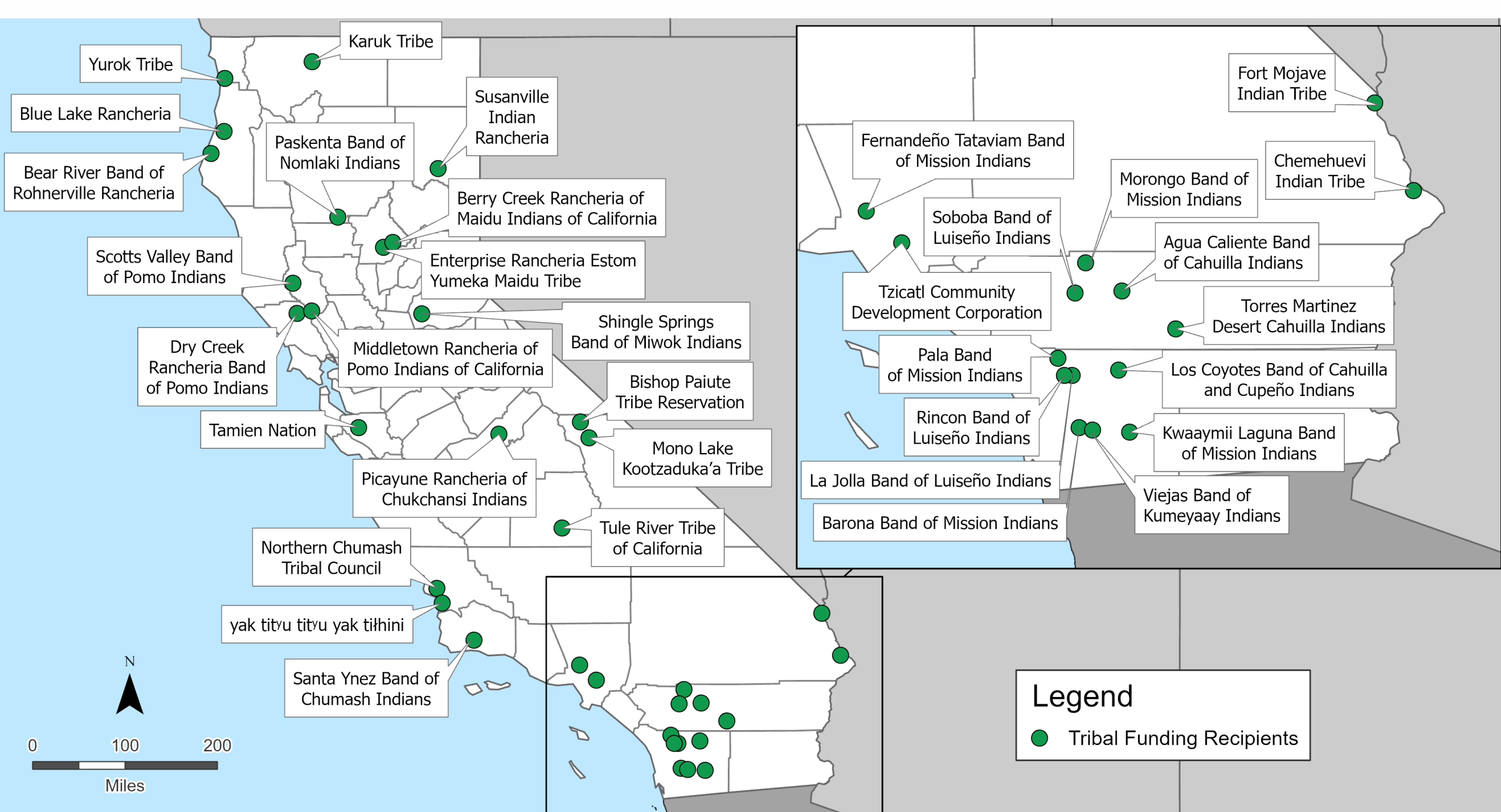
Slide co-developed 03/18/26

- Landscapes are constantly changing – important for regular visual, in-person inspections
- Looking at something in three-dimensional views (in-person) is different from two-dimensional views
- Predictive models are not always reliable
- Only way to truly understand the importance of a region is to be on the land
- Important to protect land, resources and history
- Essential to work collaboratively with Tribes

Lunch Break

A decorative horizontal bar consisting of a dark teal segment on the left and a blue segment on the right that tapers to a point on the right side.

Expected to resume around 1:00 pm



Best Practices for Tribal Energy Grants



CEC Tribal Grants Working Group

Goals:

- Inform OIIP Process
- Identify Challenges
- Share Solutions
- Coordinate Implementation
- Collaboration Across Divisions to Build Capacity

EXAMPLE GRANT STRUCTURES



Example 1: Equitable Building Decarbonization Program, Tribal Direct Install

Overview: Retrofits to buildings and homes owned by tribes, tribal members, or tribal organizations.

Structure of grant:

- Tribal formula allocation with option for additional funding:
- Choice between direct grant administration or community-based organization as “implementer.”



Example 2: Clean Transportation Program

Tribal Electric Vehicle Infrastructure, Planning and Workforce Training and Development

Overview: provided funding for Tribes, Tribal Organizations, and Tribally-owned businesses for:

1. EV Charging Infrastructure
2. EV Infrastructure Planning
3. EV Workforce Training and Development

Structure of grant:

- Supporting planning and building capacity
- Direct apply or apply with a partner organization



Example 3: Fifth Climate Change Assessment Tribal Research Grant Program

Overview: supports tribally led research, implementation of resilience projects, and information sharing amongst tribes. Tribal Research Grant Program focused on climate research, Indigenous Knowledges, and similar projects deemed a priority by California tribes.

Structure of grant:

- Two rounds of funding
- Intended to encourage tribally led research to address California-specific tribal research needs
- Application office hours

Example 4: Funding Tribal Microgrids

Overview: Over \$130 million towards Tribal Microgrids funded through:

- Electric Program Investment Charge (EPIC)
- Long Duration Energy Storage (LDES)
- California Energy Commission's Energy Conservation Assistance Act (ECAA)



DISCUSSION



How do you hear about CEC grant opportunities? How would you like to hear about them? (slide co-developed 03/18/26)

- Word-of-mouth
- Use Social Media – members find info here
- Emails; updated distribution lists
- Tribal leadership receives government to government correspondence.
- Make sure leadership is included in general communications. CEC needs to stay on top of leadership changes.
- Newsletter, emails
- Website visits
- Personal calls from CEC staff (Davina); direct outreach via phone is best.
- Email overload is an issue; difficult to sift through information that may be relevant. Calls help flag what is most relevant because tribes need to prioritize what they will be able to pursue.
- Difficult trying to find projects/available funding that may fit with needs of a Tribe.
- Information comes too late at times – Tribes need a lot of data to be able to complete application and it takes time.

How can CEC better reduce the barriers to applying for grants? (slide co-developed 03/18/26)

- All grants that CEC offers should be eligible for tribes. If there are restrictions, make those clear so tribes know which grants to prioritize.
- Community looks to leadership when issues arise.
- Are there grants available to help Tribes better support their communities around resiliency and emergency situations?
- Grant funding is too restrictive and needs to address the issues that Tribes are experiencing.
- Equity is important and needs to be a bigger factor in grant funding, especially for rural tribes. CEC should have Map of where CEC funding has gone on tribal projects. Should prioritize equity within tribal funding. Heat map of where the most funding has gone. Ensure the funds are going to Tribes who need it the most
- Personal phone call outreach when funding is available
- Grant matching funds is a barrier; some Tribes do not have the funds.
- Not enough time to complete applications.
- Tribal land is a high-cost living area; funds should be allocated accordingly. Completing projects may also be more expensive in these areas.

What challenges have you experienced in grant administration? (slide co-developed 03/18/26)

- Need ofor Technical assistance – understanding grant language and state language
- NRCS Grants (environmental agricultural programs) as one example of technical assistance. Included:
 - Consultations and prep work
 - Willingness of NRCS to come out in person and connect with Tribe
 - Collaborative working relationships
 - Communication is key – knowing what is expected and required up front to be able to prepare
 - Cooperative agreement – NRCS does surveys, site maps, most work is done by NRCS, with additional funding going to the Tribes.
- Funding does not cover cost of consultants or planners.
- Important to get input from the Tribe and be onsite to see where the work will be done.
- Land and terrain can be a hurdle in getting grant funding.
- Includes planning and consultant w/in grant funding

THANK YOU!



Tribal Energy Equity Indicators



Energy Equity Indicators Tool

Data Visualization and Mapping



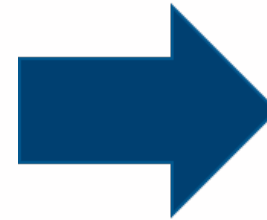
Database of Equity Data



Geographic Data Layers



Data Access and Analysis



Insights to Help
Prioritize CEC Efforts
and Investments for
Tribes

Relevance to Other OIIP Efforts

Energy Resources

- Motivate equitable distribution of clean energy resources by increasing transparency
- Track progress over time to measure impact of CEC efforts

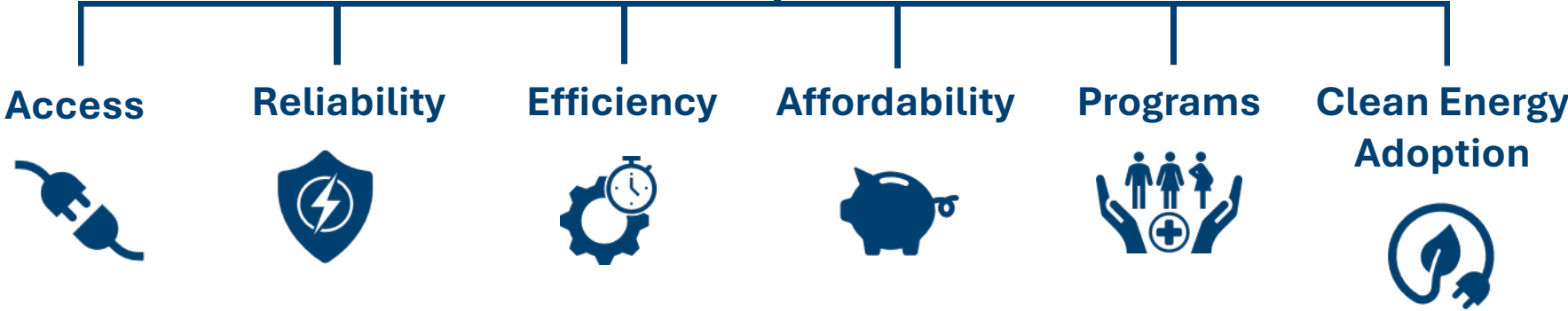
Energy Grants

- Help identify communities that could use support to tackle their energy challenges
- Provide quantitative metrics to help strengthen grant proposals

Energy Equity Metrics Categorization



Energy Metrics



Supplementary Metrics



Community



Health



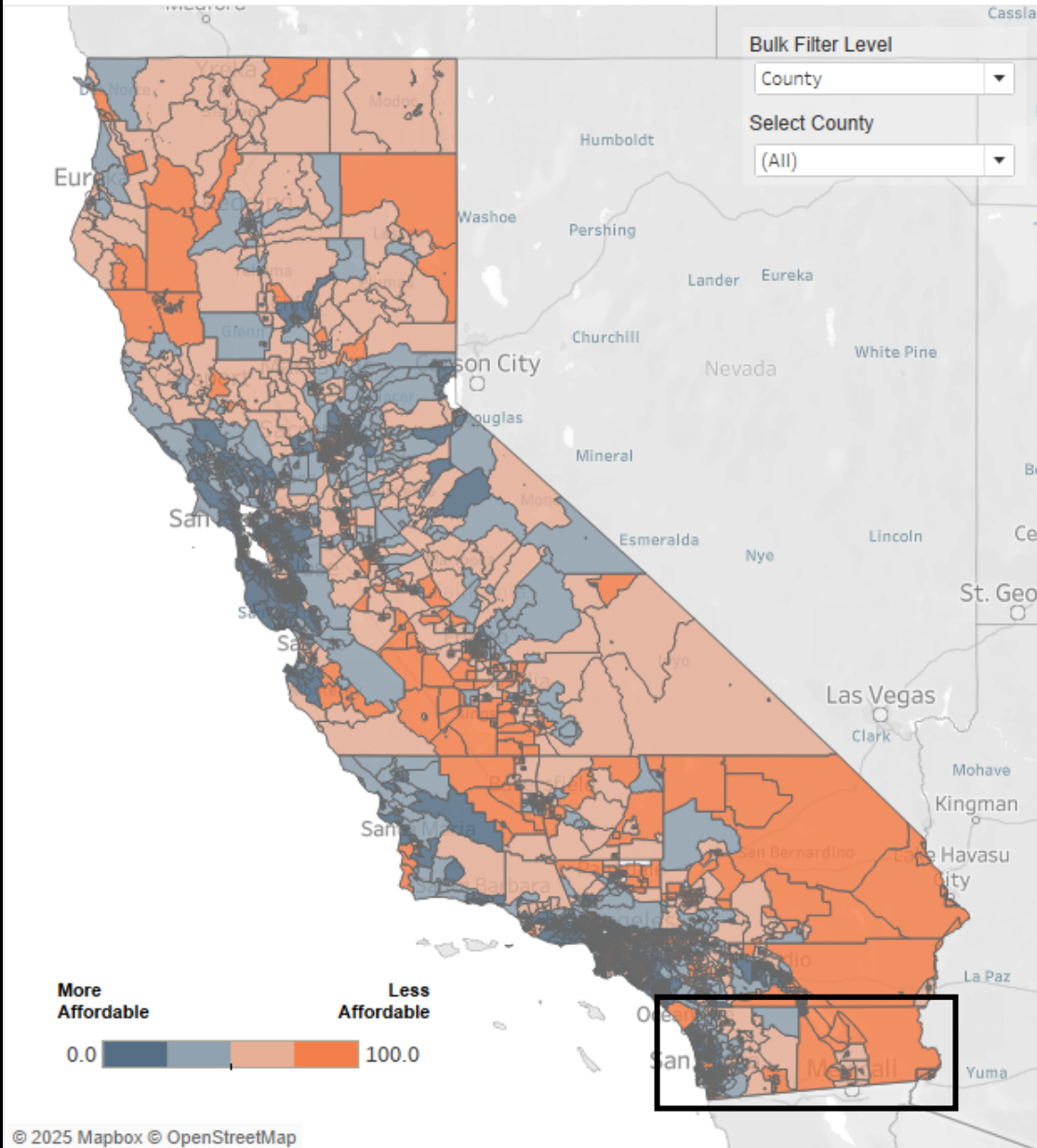
Safety



Socioeconomics

A Deep Dive into Energy Affordability

Energy Affordability Index by Census Tract



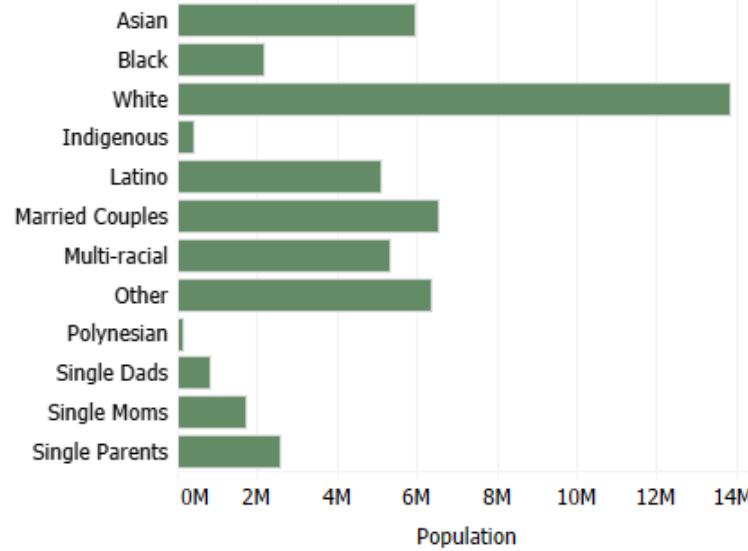
Pearson Correlation Tool

Independent Variable:
Energy Affordability Index

Vulnerability Variable:
Energy Affordability Index

r = 1.00

Community Characteristics



Population Selected **39,234,926**

Average Household Size **3.0**

Average Energy Affordability Index **50.00**

Average Energy Burden **2.1%**

Total Energy Affordability Gap **59,216.8M**

Filters

Geographic Level:

- Census Tract
- ZIP Code
- City
- County
- State Assembly District
- State Senate District
- Natural Gas Provider
- Electric Power Provider

Metric:

- Energy Affordability Index
- Energy Affordability Gap
- Energy Burden

Home Ownership Type:

- Combined
- Owners
- Renters

Energy Affordability Index:

- Show All
- Filter Top 25%

SB 535 DACs Filter:

- Show All
- DACs

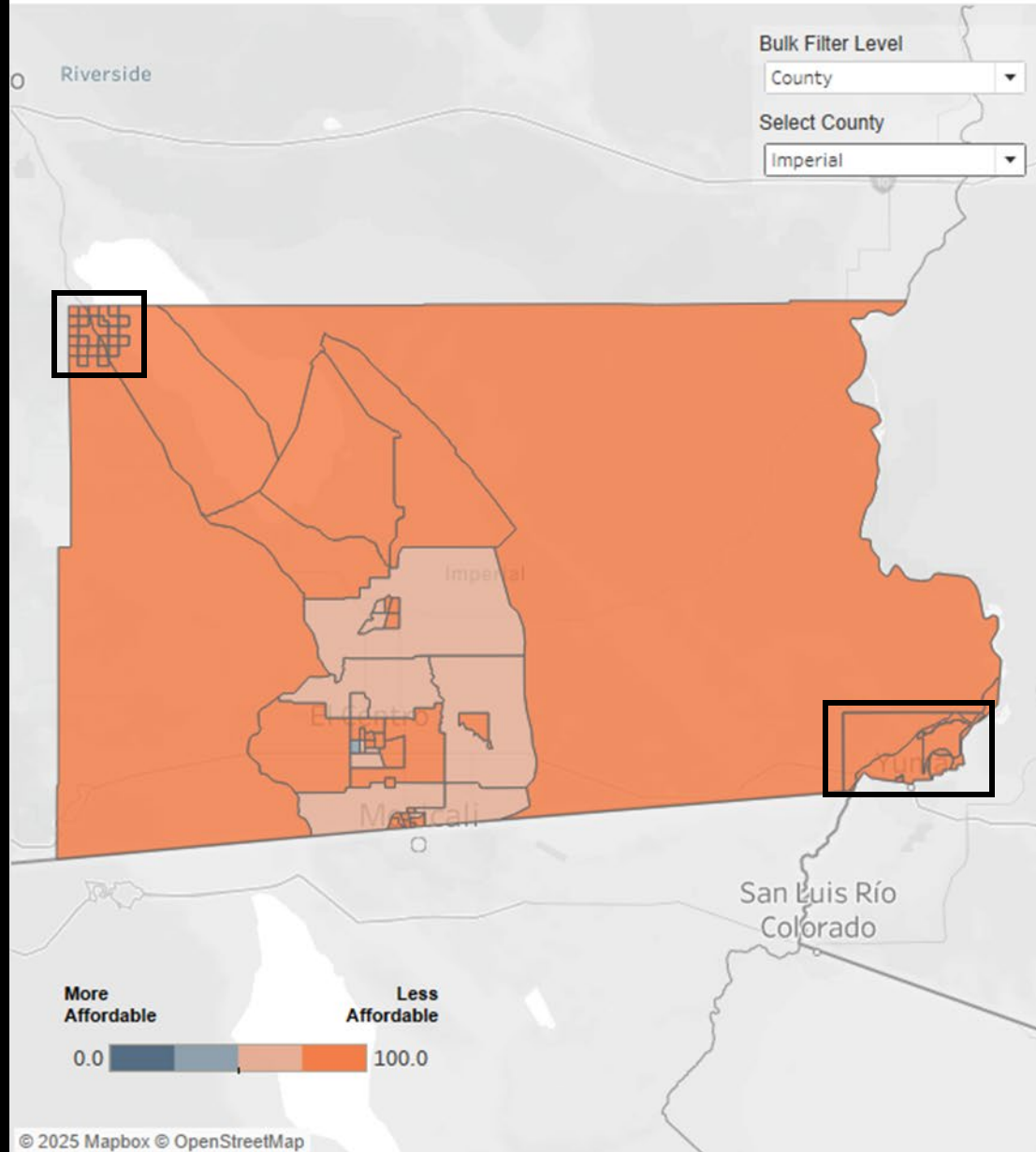
Justice Census Tract Filter

- Show All
- Justice Census Tracts



A Deep Dive into Energy Affordability

Energy Affordability Index by Census Tract



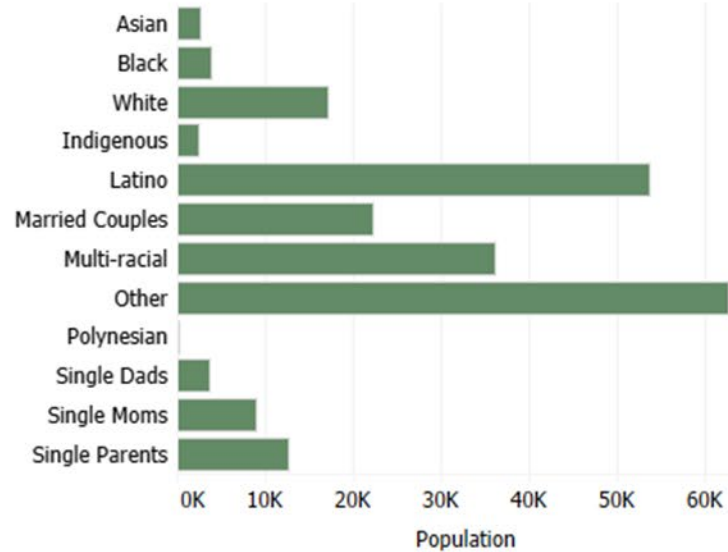
Pearson Correlation Tool

Independent Variable: Energy Affordability Index

Vulnerability Variable: Energy Affordability Index

$r = 1.00$

Community Characteristics



Population Selected **178,682**

Average Household Size **3.7**

Average Energy Affordability Index **81.63**

Average Energy Burden **3.7%**

Total Energy Affordability Gap **85.0M**

Filters

Geographic Level:

- Census Tract
- ZIP Code
- City
- County
- State Assembly District
- State Senate District
- Natural Gas Provider
- Electric Power Provider

Metric:

- Energy Affordability Index
- Energy Affordability Gap
- Energy Burden

Home Ownership Type:

- Combined
- Owners
- Renters

Energy Affordability Index:

- Show All
- Filter Top 25%

SB 535 DACs Filter:

- Show All
- DACs

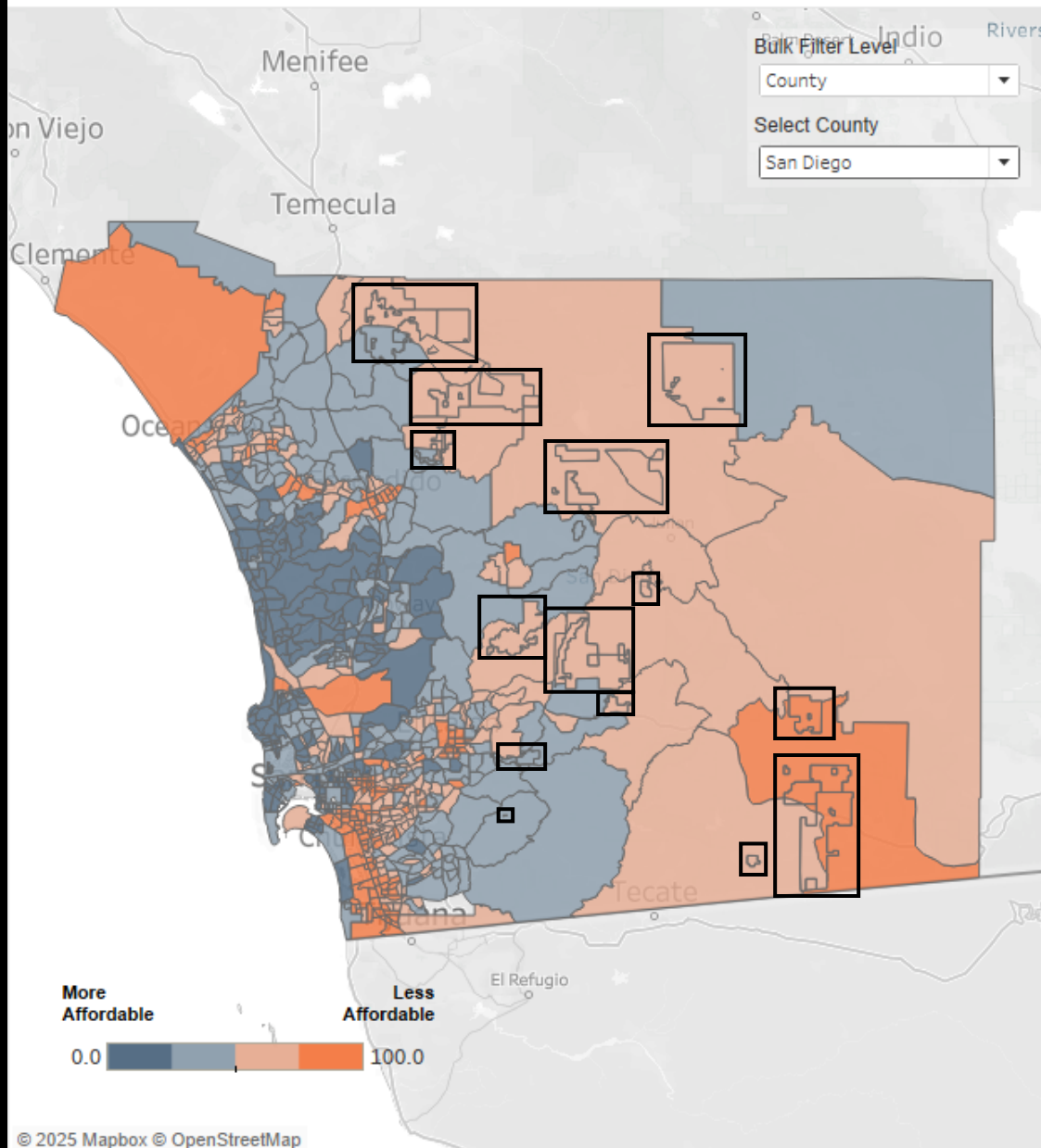
Justice Census Tract Filter

- Show All
- Justice Census Tracts



A Deep Dive into Energy Affordability

Energy Affordability Index by Census Tract



Pearson Correlation Tool

Independent Variable:

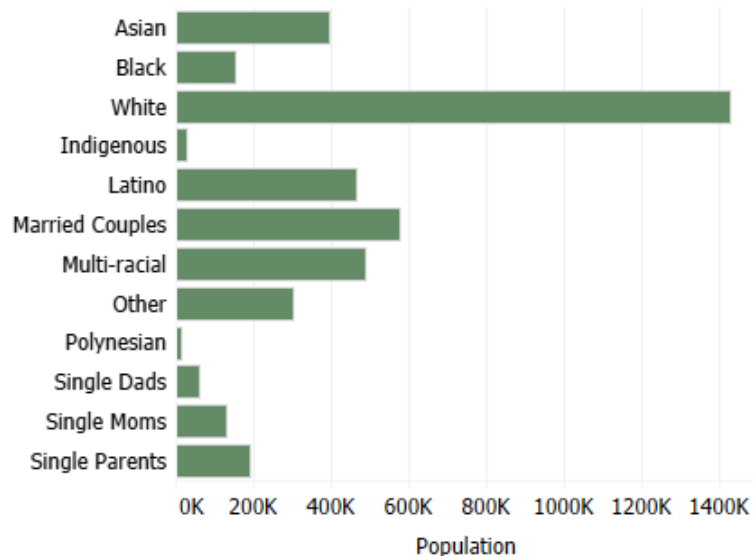
Energy Affordability Index

Vulnerability Variable:

Energy Affordability Index

r = 1.00

Community Characteristics



Population Selected **3,273,354**

Average Household Size **2.9**

Average Energy Affordability Index **46.65**

Average Energy Burden **1.7%**

Total Energy Affordability Gap **7,741.2M**

Filters

Geographic Level:

- Census Tract
- ZIP Code
- City
- County
- State Assembly District
- State Senate District
- Natural Gas Provider
- Electric Power Provider

Metric:

- Energy Affordability Index
- Energy Affordability Gap
- Energy Burden

Home Ownership Type:

- Combined
- Owners
- Renters

Energy Affordability Index:

- Show All
- Filter Top 25%

SB 535 DACs Filter:

- Show All
- DACs

Justice Census Tract Filter

- Show All
- Justice Census Tracts



Discussion-Guiding Questions

- How could your tribe utilize these metrics or this tool?
 - Would it be useful for energy planning?
 - Would it be useful for grant funding?

- Are there any other uses that your tribe would find beneficial?
 - Are there features or metrics you would like to see added?

- Do you have any other thoughts on how Energy Equity Indicators can better meet tribal needs?

Thank You!



Quenby Lum, Energy End Use Survey Specialist
Martín Flores, Energy Equity and Energy Modeling Specialist

Group email: EnergyEquityIndicators@energy.ca.gov

Afternoon Break



Improving Energy Project Development Processes



Purpose of Discussion

- Explore potential approaches to improve coordination and consultation on energy related projects
- Identify and strengthen roles for participation in both tribal and non-tribal energy related project development
- Improve consideration of cultural resources on non-tribal land
- Identify non-process issues that impact effective communications and coordination

Example Approaches for Energy Project Development Process

- Project development is **iterative**
- Unexpected variables may result in **changes to a project**
- **Communication** should occur throughout all processes
- Project **data transparency and accessibility** needed throughout all processes

Project Process Example

1. Project Potential & Project Options

- Preliminary assessment of opportunity
- Data collection
- Determine ownership structure
- Permitting and environmental compliance considerations

2. Project Refinement

- Planning and development
- Engineering and design

3. Project Implementation

- Financing
- Construction

4. Project Operations and Maintenance (O&M)

- Post-construction management of project

1. Project Potential & Options

Determine if basics met for project development and explore roles, ownership structure, and regulatory considerations

- Possible site locations, restrictions, and conflicts
- Feasibility studies
- Need or demand for project or resource
- Understand tribal roles and business structure
- Explore opportunities for tribal partnerships
- Identify permitting other use considerations

Project Potential & Options

(Co-developed input 3/18/26)

- Tribal Benefits Agreements
- How does a Tribe revisit right-of-ways that were granted before DOI needed Tribes' permission?
 - Supporting tribes in identifying and leveraging existing right-of-ways
 - Importance of tribal sovereignty and Trust Doctrine.

2. Project Refinement

Finalize project structure and decisions

- Finalize ownership structure i.e. tribal, community, or developer
- Determine regulatory requirements, technology, and costs
- Environmental studies, CEQA, NEPA



3. Project Implementation

Project contract and construction

- Finalize pre-construction agreements and finances



4. Project O&M



Conduct or ensure ongoing O&M including repair and replacement of items as needed

- Warranties and O&M agreements
- System performance and monitoring

Thank You!

Useful links:

- DOE reference slides: [The Five-Step Process Framework for Project Development](#)
- [Tribal Program | California Energy Commission](#)

Closing Comments



Upcoming Funding Opportunities

- Tribal Set-aside
Equitable Building
Decarbonization
 - Guidelines posted
- Electric Program
Investment Charge 5
(EPIC 5)
 - Consultation open

Ways to Stay Engaged

- Follow the proceeding around the state!
 - 7 more regional roundtables in Round 1!
- Sign-Up for the “Tribal Program” email list.
- Request tribal consultation
- Submit written comments to the docket.

SUBSCRIBE

Tribal Program

Email *

SUBSCRIBE

Next OIP Regional Roundtable: Tomorrow

Information available soon!

THANK YOU!

