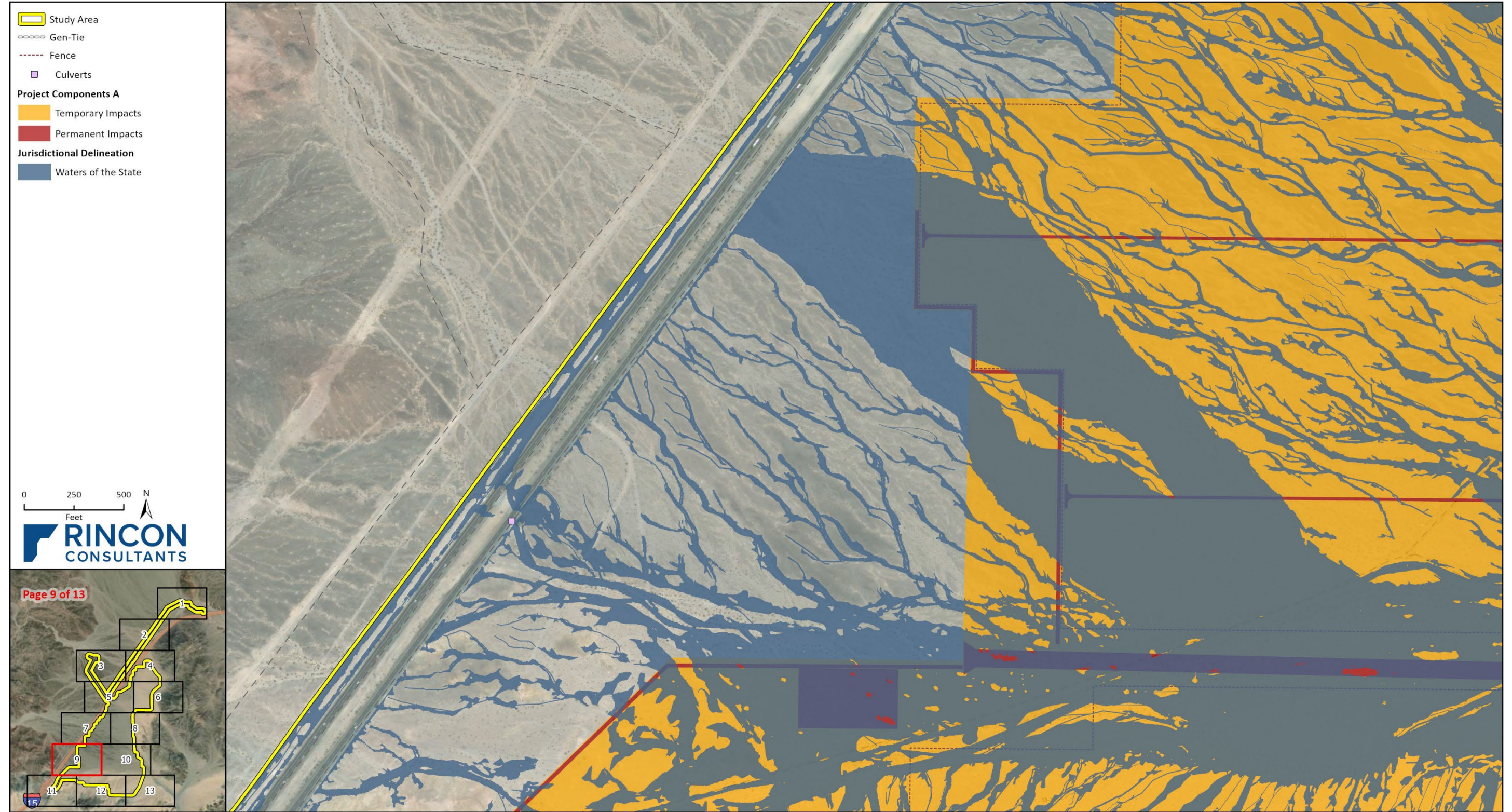


DOCKETED	
Docket Number:	24-OPT-03
Project Title:	Soda Mountain Solar
TN #:	268996
Document Title:	Updated Appendix D (part 2) to the aquatic resources delineation
Description:	This docket item provides an updated appendix D (part 2) to the aquatic resources delineation and impact analysis in response to the email from the CEC dated March 5, 2026.
Filer:	Hannah Arkin
Organization:	Resolution Environmental
Submitter Role:	Applicant Representative
Submission Date:	3/11/2026 8:39:30 AM
Docketed Date:	3/11/2026

Appendix D, Part 2

Figures

Figure 11j Project A –Aquatic Resources Impacts



Imagery provided by ESRI and its licensors © 2026.
Additional data provided by USGS, 2023.

25-17243-10
Fig 2 Jurisdictional Delineation - ProjComp A

Figure 11k Project A –Aquatic Resources Impacts

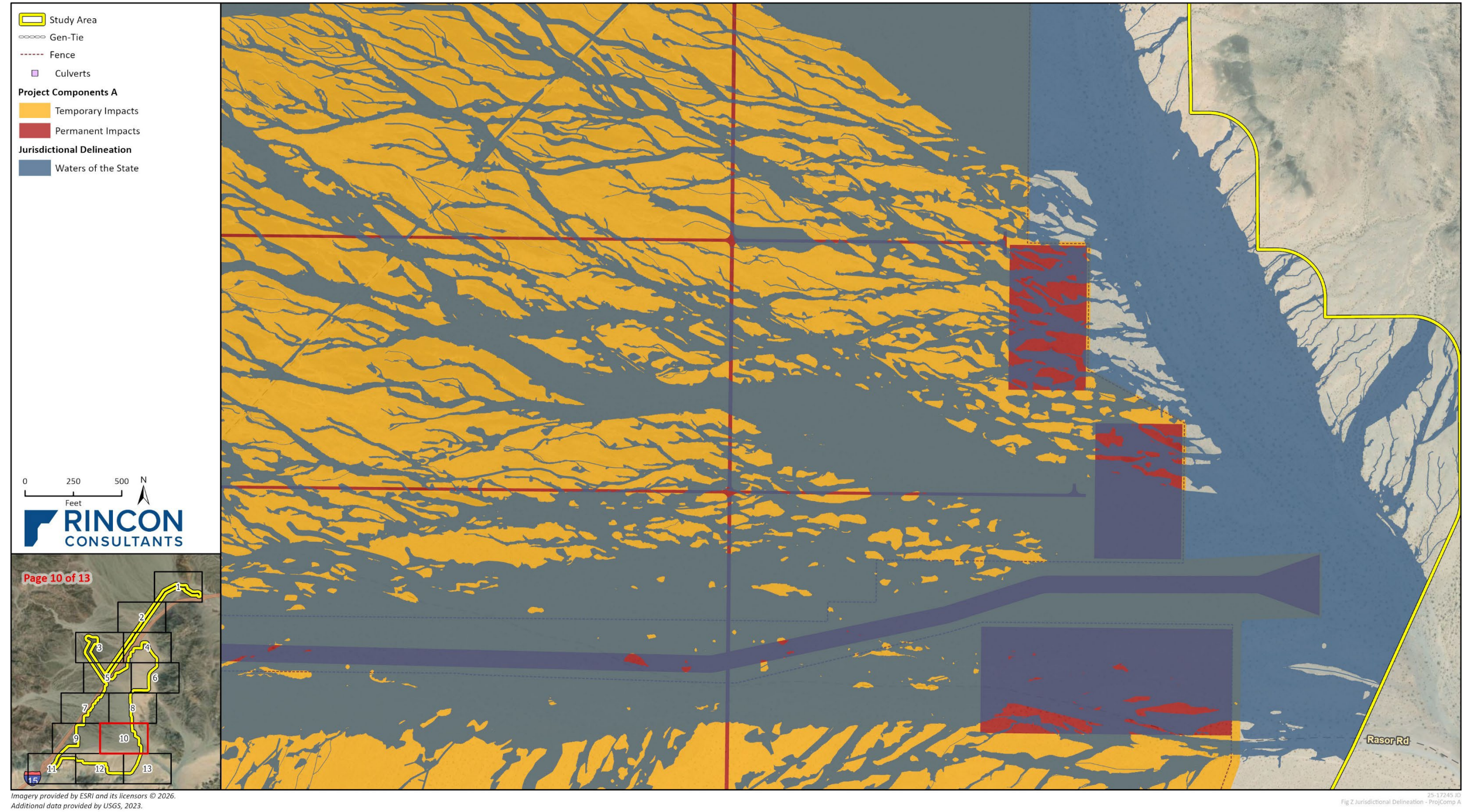


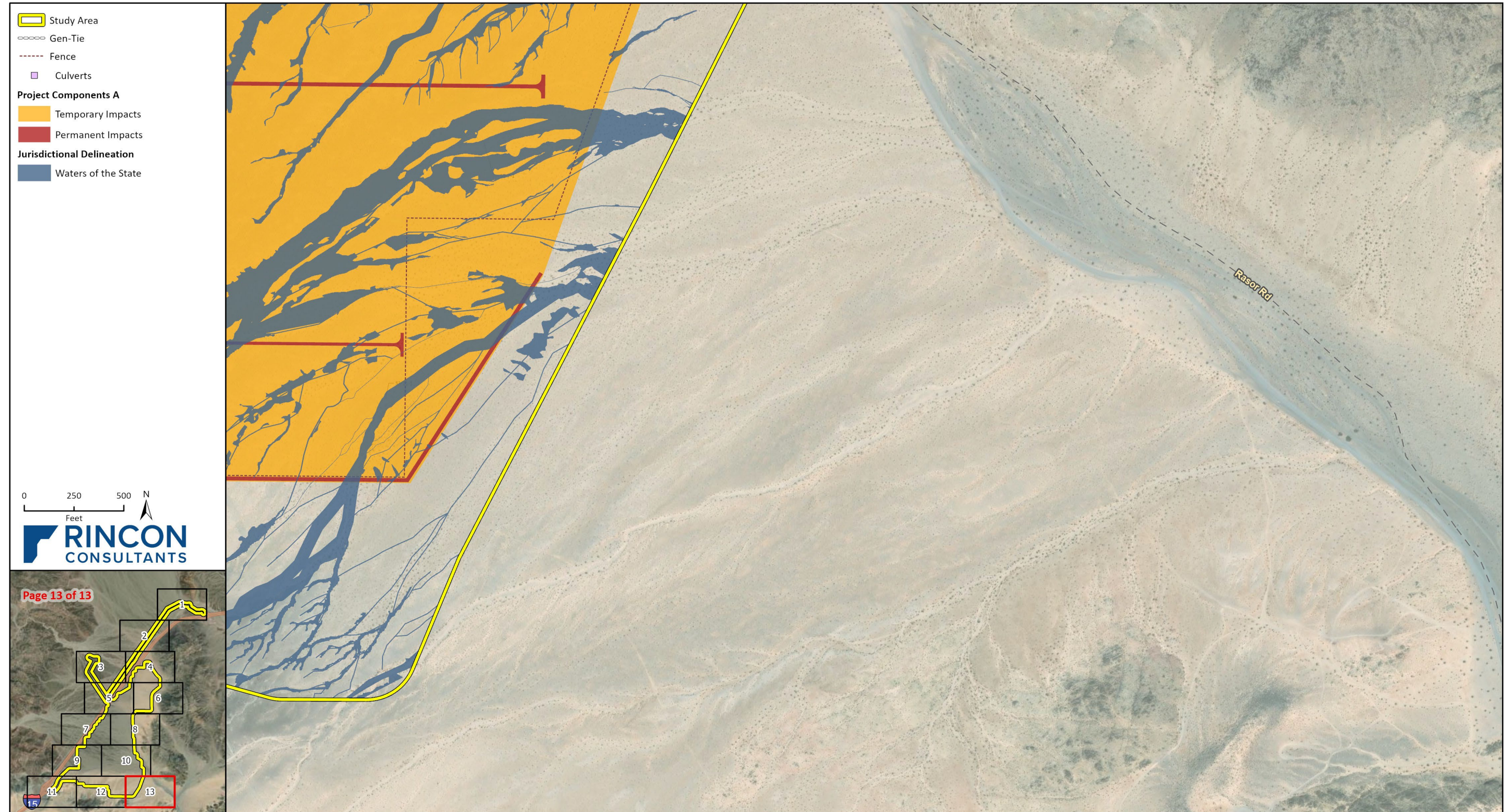
Figure 111 Project A –Aquatic Resources Impacts



Figure 11m Project A –Aquatic Resources Impacts

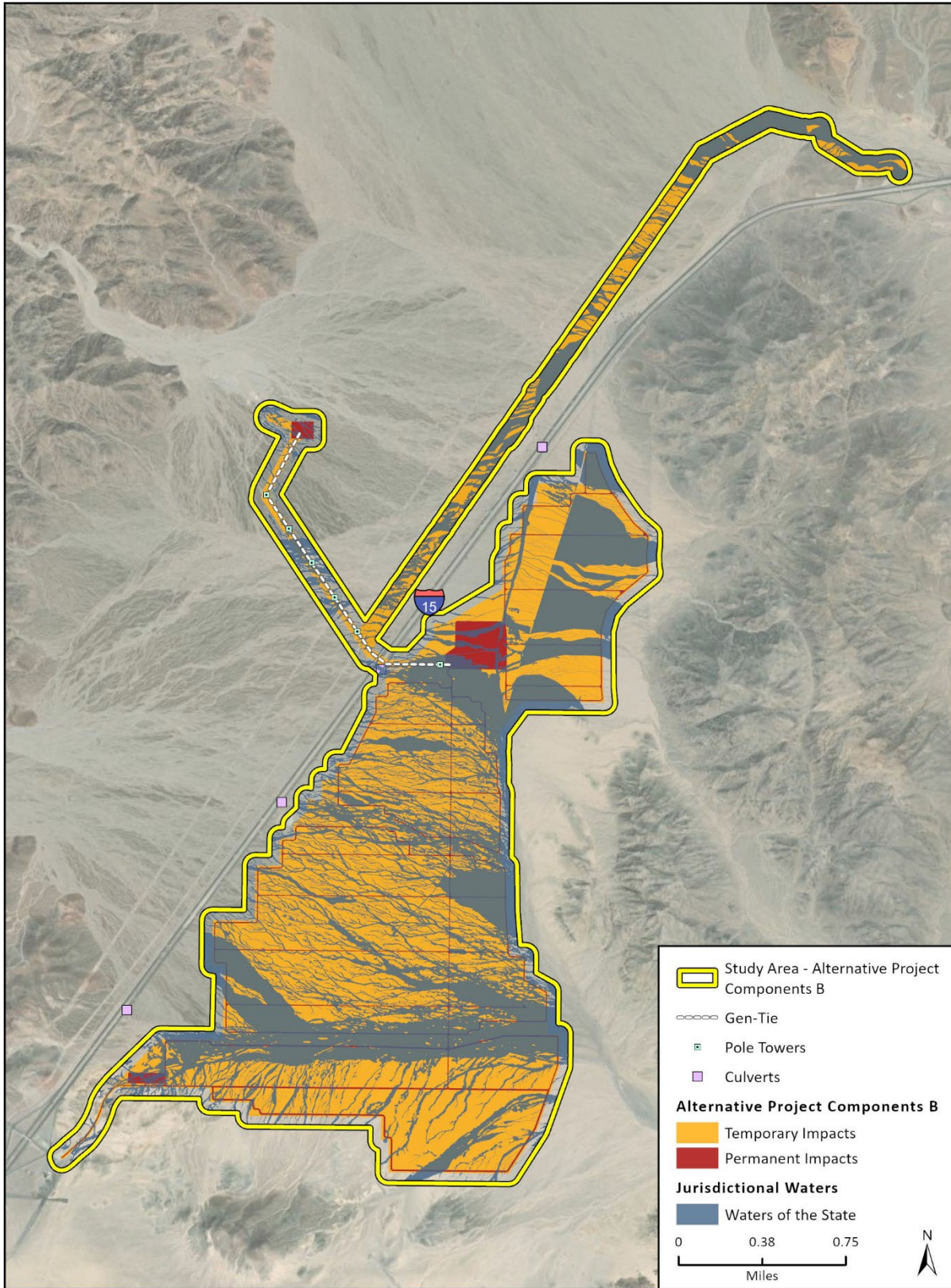


Figure 11n Project A –Aquatic Resources Impacts



This page intentionally left blank.

Figure 12a Alternative Project B – Aquatic Resources Impacts Overview



This page intentionally left blank.

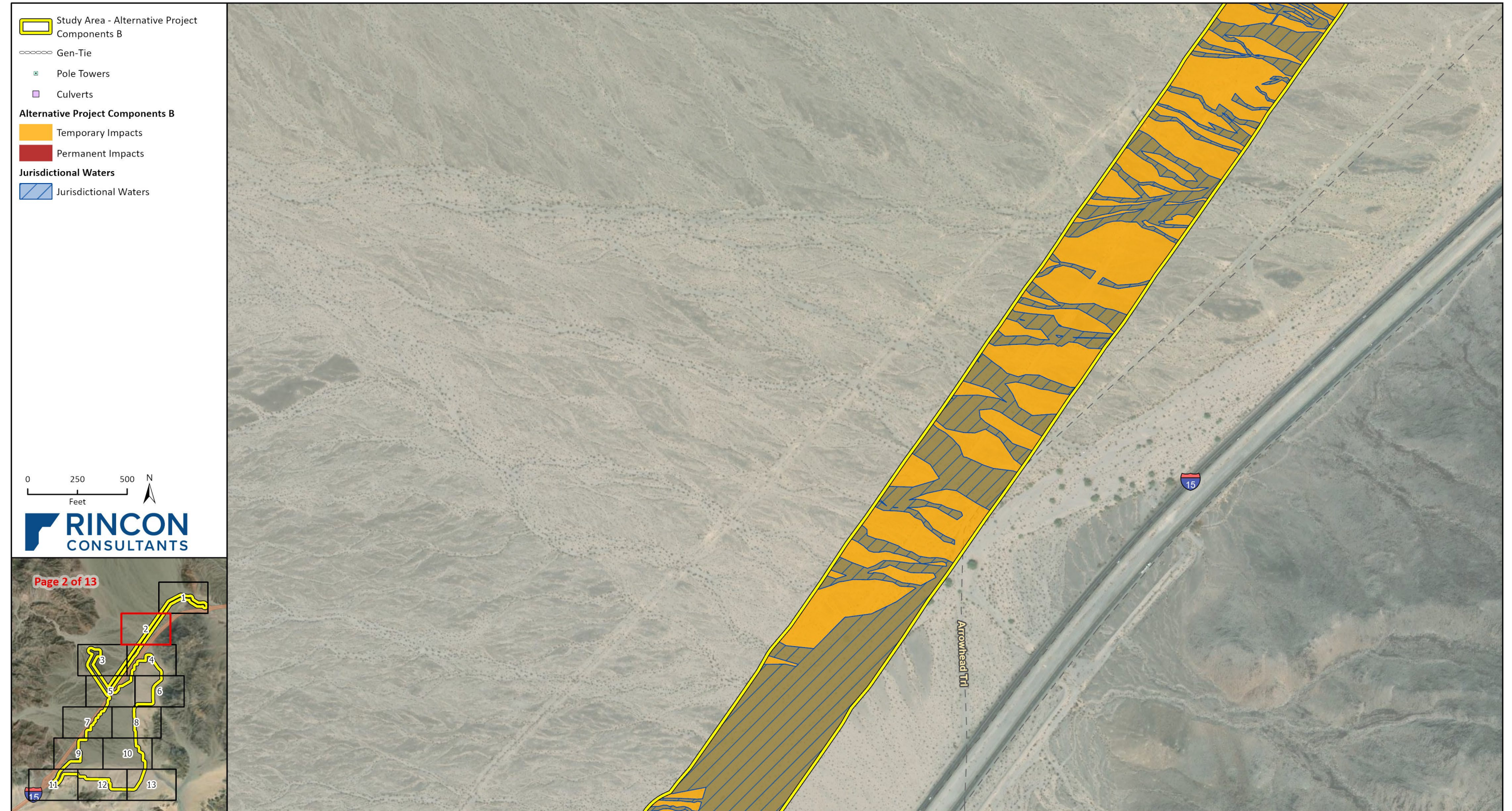
Figure 12b Alternative Project B –Aquatic Resources Impacts



Imagery provided by ESRI and its licensors © 2026.
Additional data provided by USGS, 2023.

25-17245.D
Fig 2 Jurisdictional Delineation - AltProjComp B

Figure 12c Alternative Project B –Aquatic Resources Impacts



Imagery provided by ESRI and its licensors © 2026.
Additional data provided by USGS, 2023.

25-17245-10
Fig 2 Jurisdictional Delineation - AltProjComp B

Figure 12d Alternative Project B –Aquatic Resources Impacts

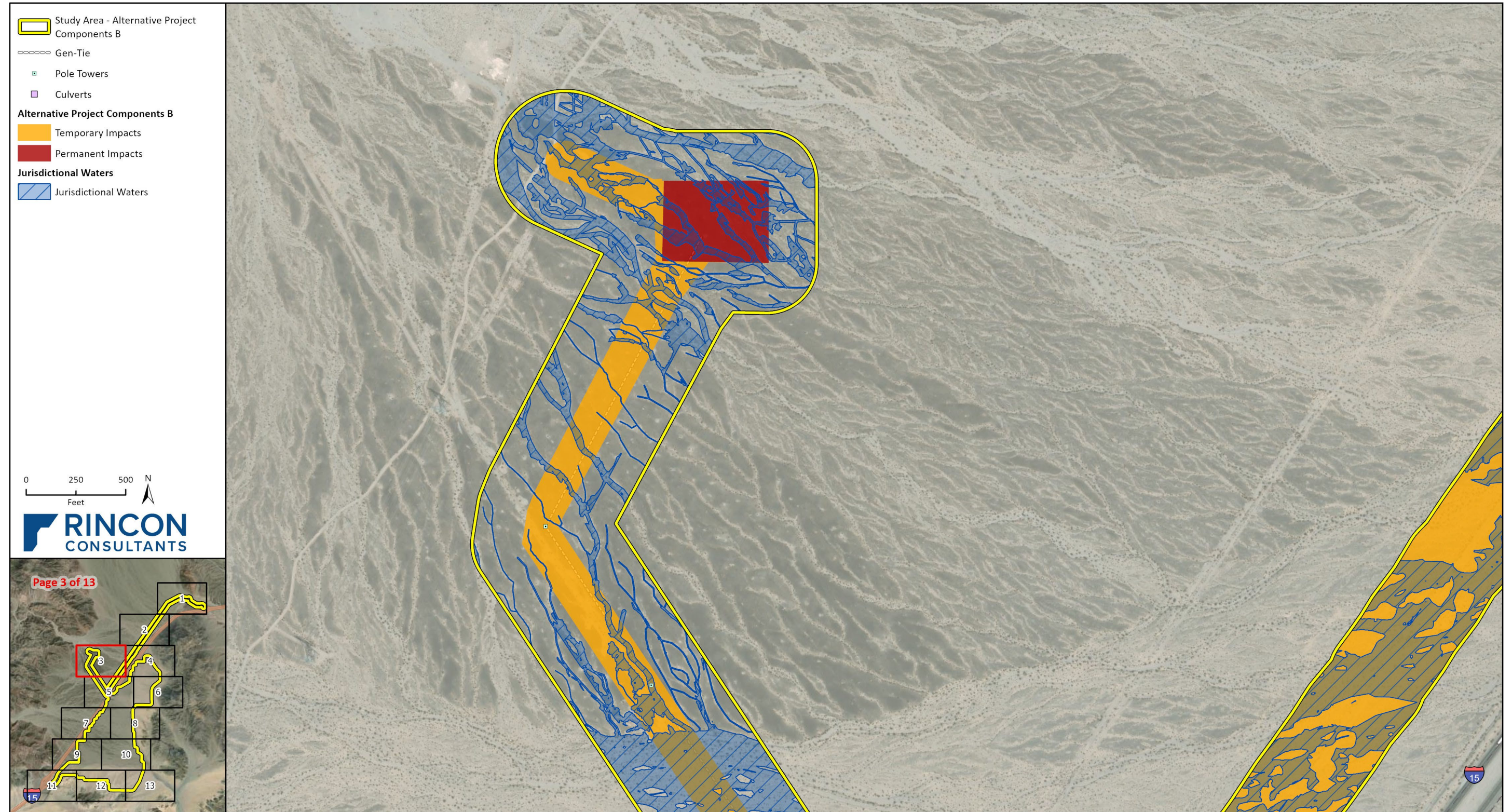
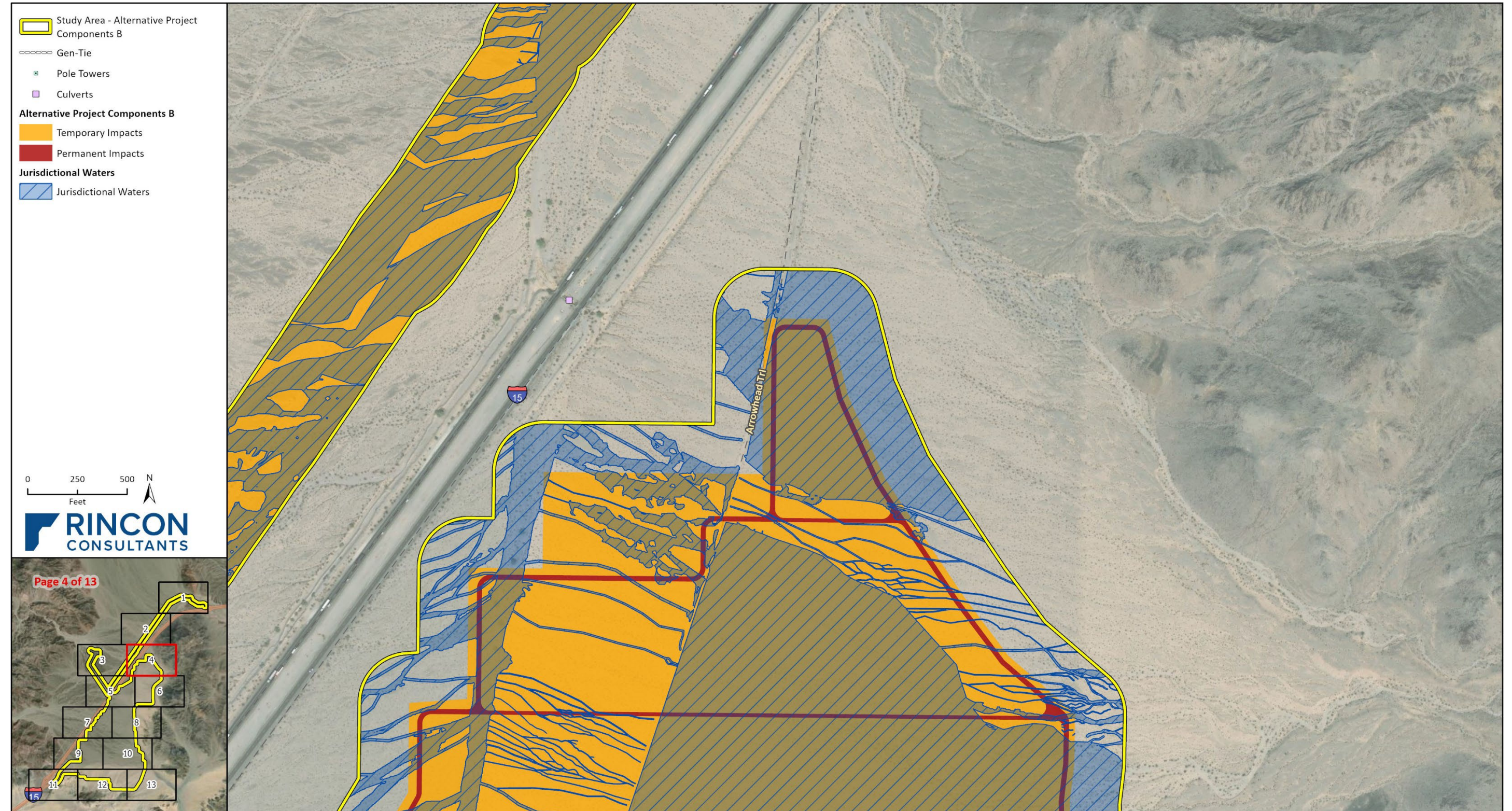


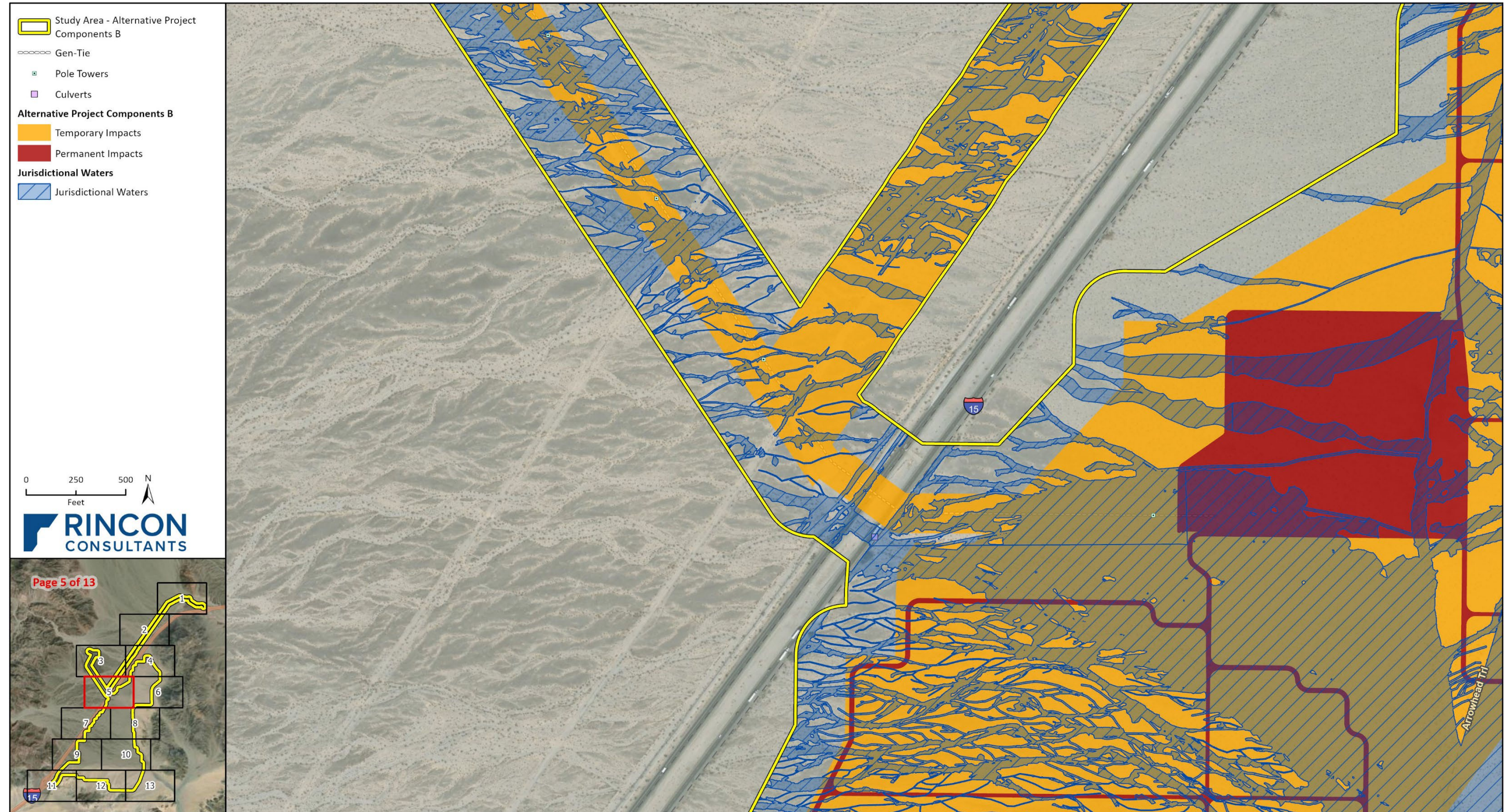
Figure 12e Alternative Project B –Aquatic Resources Impacts



Imagery provided by ESRI and its licensors © 2026.
Additional data provided by USGS, 2023.

25-17245-10
Fig 2 Jurisdictional Delineation - AltProjComp B

Figure 12f Alternative Project B –Aquatic Resources Impacts



Imagery provided by ESRI and its licensors © 2026.
Additional data provided by USGS, 2023.

25-17245 ID
Fig 2 Jurisdictional Delineation - AtProjComp B

Figure 12g Alternative Project B –Aquatic Resources Impacts

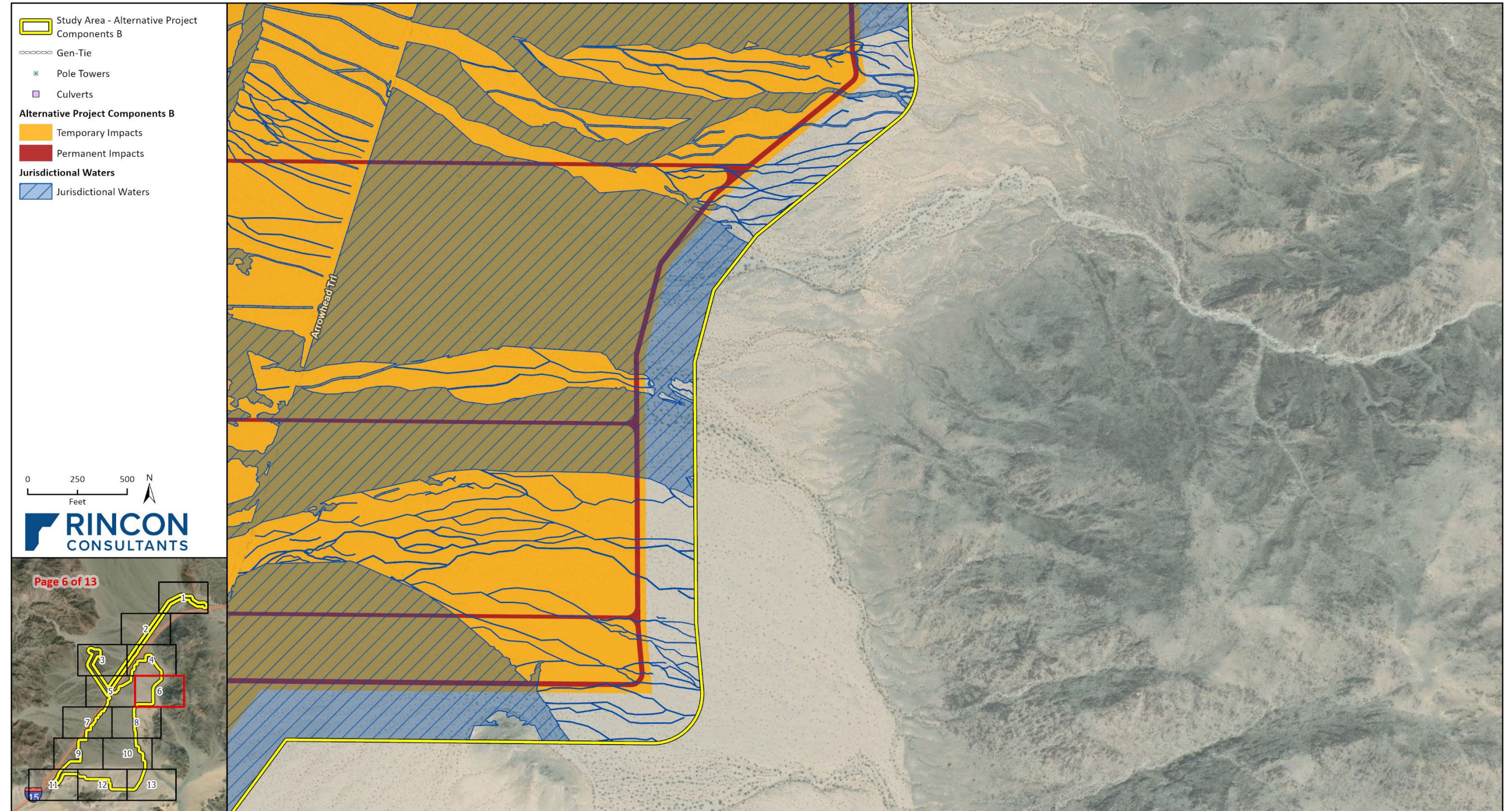


Figure 12h Alternative Project B –Aquatic Resources Impacts

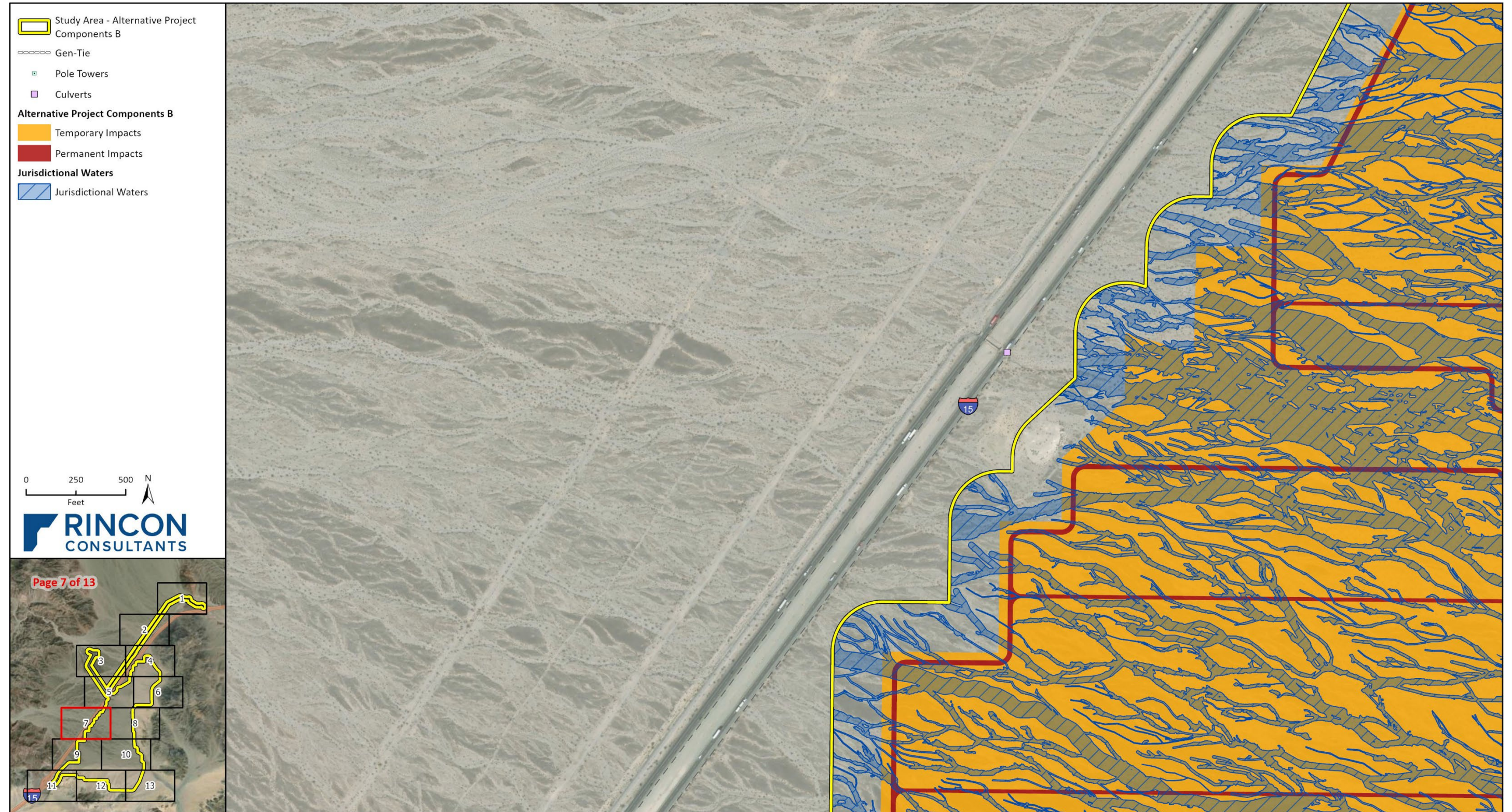


Figure 12i Alternative Project B –Aquatic Resources Impacts

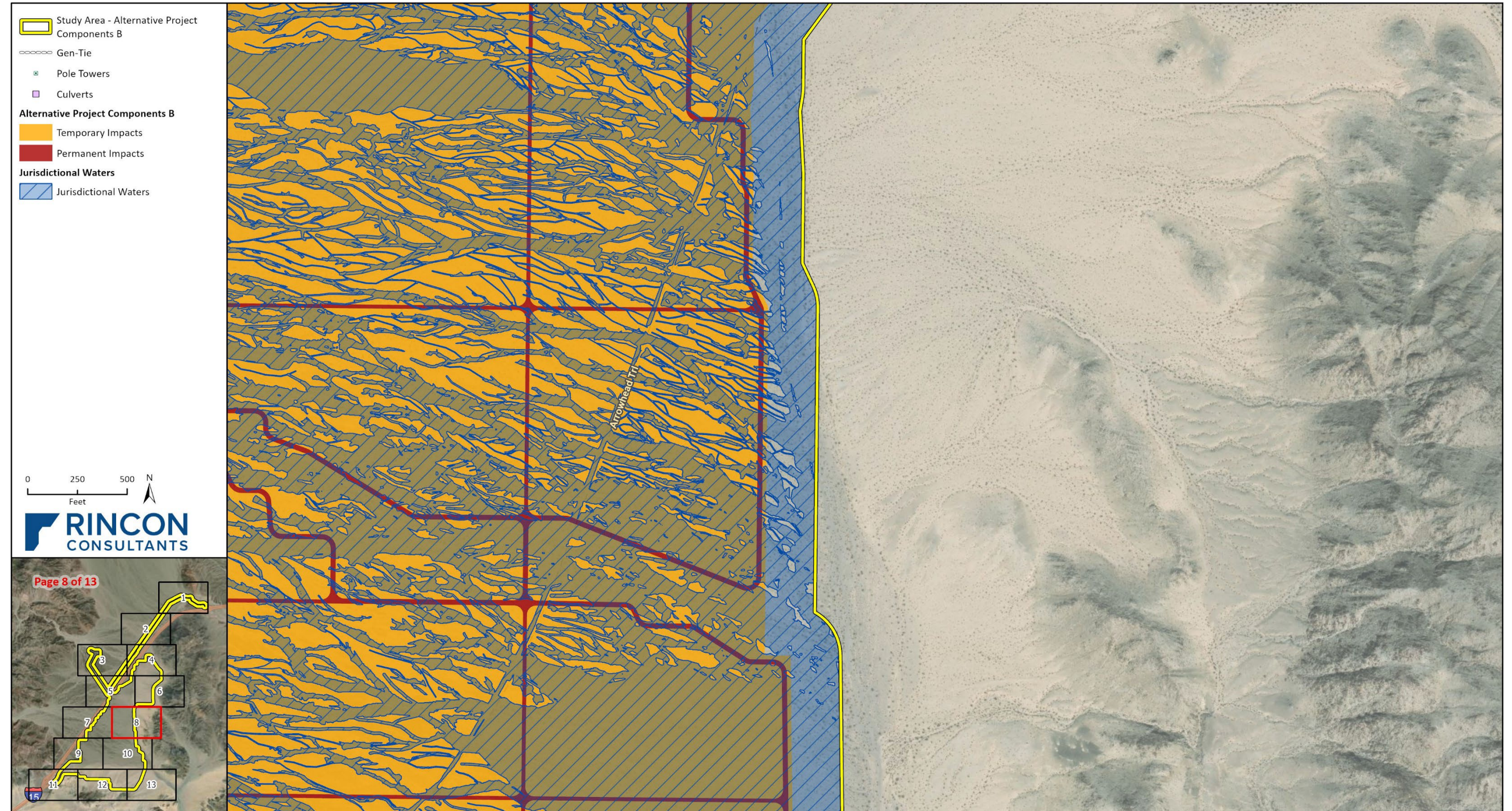


Figure 12j Alternative Project B –Aquatic Resources Impacts

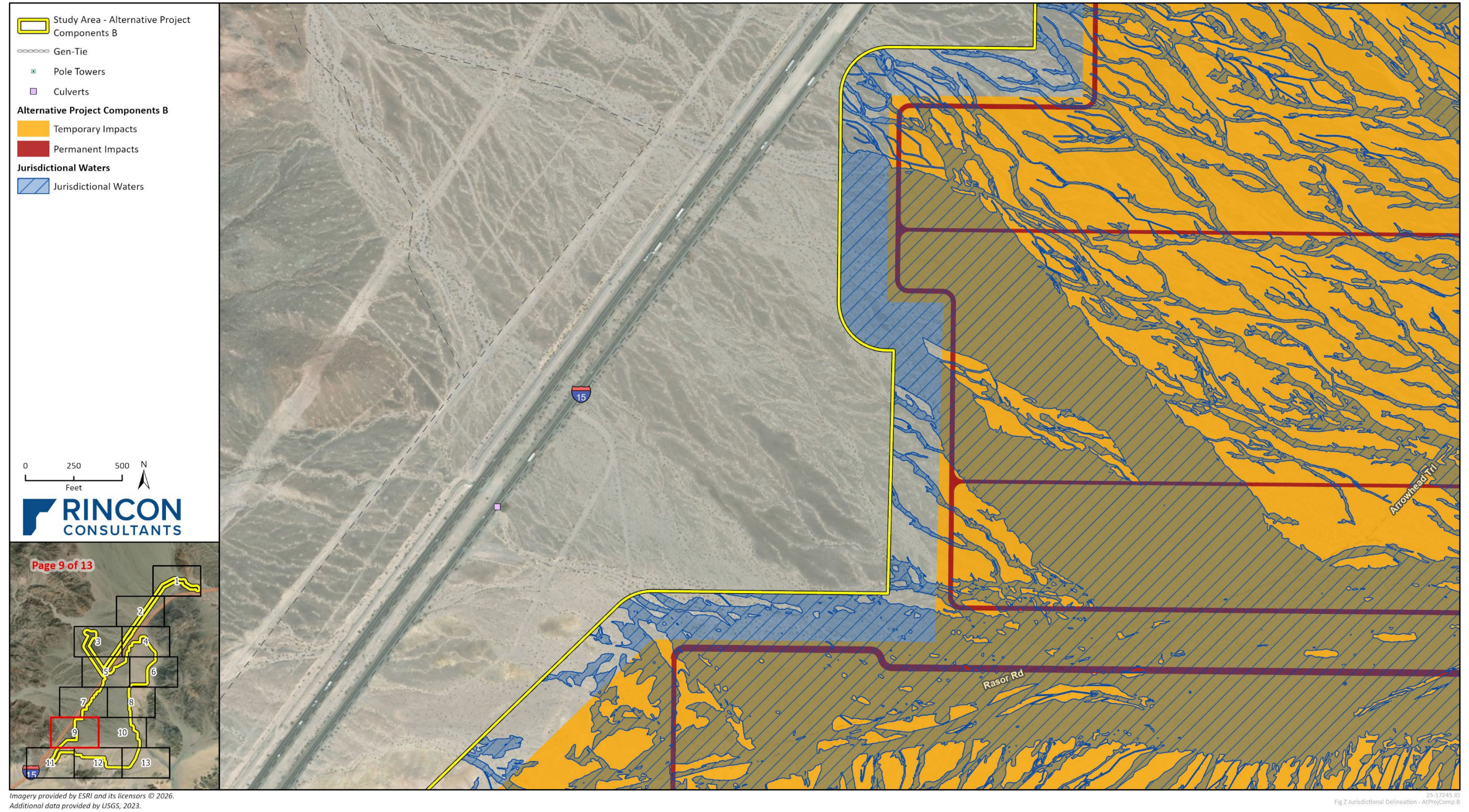
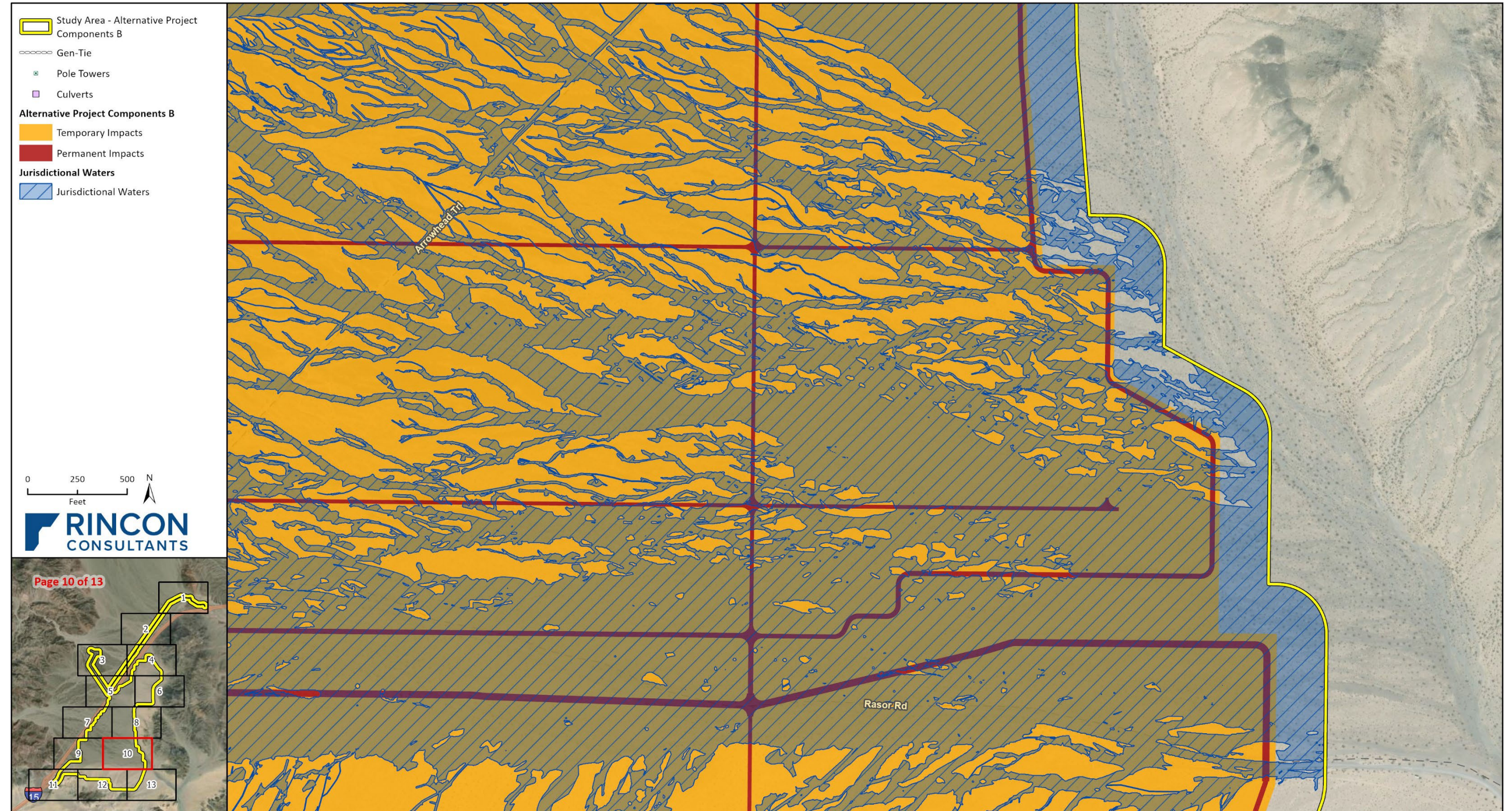


Figure 12k Alternative Project B –Aquatic Resources Impacts



Imagery provided by ESRI and its licensors © 2026.
Additional data provided by USGS, 2023.

25-17245-10
Fig 2 Jurisdictional Delineation - AltProjComp B

Figure 12I Alternative Project B –Aquatic Resources Impacts



Imagery provided by ESRI and its licensors © 2026.
Additional data provided by USGS, 2023.

25-17245 ID
Fig 2 Jurisdictional Delineation - AtProjComp B

Figure 12m Alternative Project B –Aquatic Resources Impacts

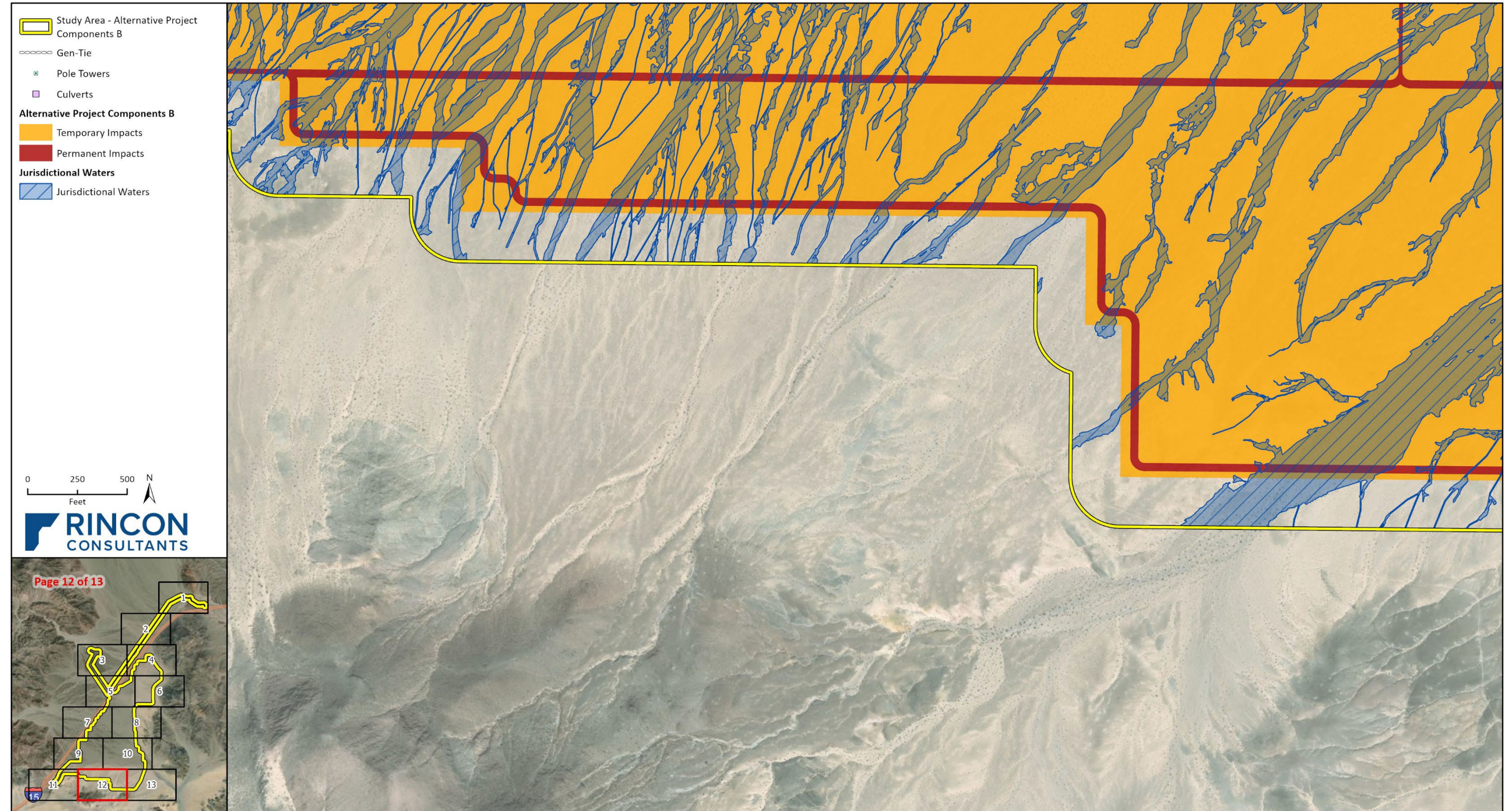
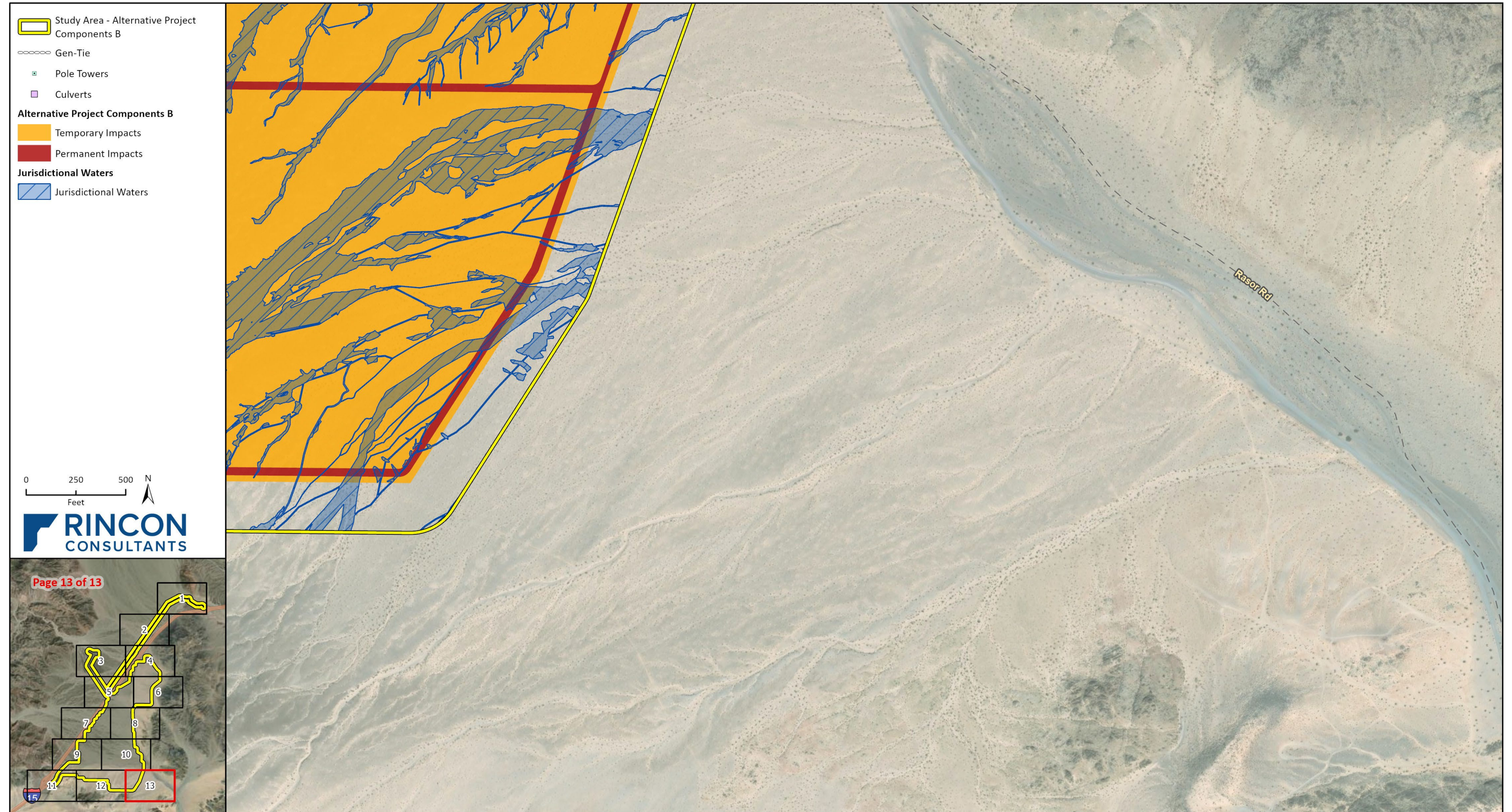


Figure 12n Alternative Project B –Aquatic Resources Impacts



This page intentionally left blank.