

DOCKETED	
Docket Number:	25-OPT-02
Project Title:	Prairie Song Reliability Project
TN #:	268983
Document Title:	Prairie Song Reliability Project Opt-In Application Informational and Environmental Scoping Meeting
Description:	PowerPoints Presentation Prairie Song Reliability Project Opt-In Application Informational and Environmental Scoping Meeting Docket Number: 25-OPT-02 February 24, 2026
Filer:	Marichka Haws
Organization:	California Energy Commission
Submitter Role:	Commission Staff
Submission Date:	3/10/2026 1:57:59 PM
Docketed Date:	3/10/2026



PRAIRIE SONG RELIABILITY PROJECT OPT-IN APPLICATION

Informational and Environmental Scoping Meeting

Docket Number: 25-OPT-02

February 24, 2026



Pledge of Allegiance



I pledge allegiance to the flag of the United States of America, and to the Republic for which it stands, one Nation under God, indivisible, with liberty and justice for all.



Meeting Logistics

- Meeting is hybrid and recorded.
- Instruction for Zoom closed captioning service:
 - **To Activate:** click on “live transcript” icon and then choose either “show subtitle” or “view full transcript”.
 - **To Stop:** click "exit" from “live transcript” or select “hide subtitle” icon.
- Please be mindful of the audio for those participating online; speak slowly and clearly.
- Agenda includes time for public comment and input.



Agenda

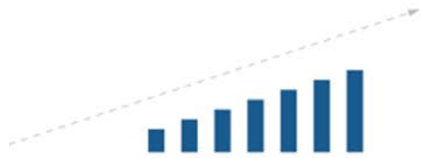
- **Welcome**
- **CEC Staff Presentation**
 - Opt-In Certification Program
- **Applicant Presentation**
 - Proposed project
- **CEC Staff Presentation**
 - Staff Assessment and Scope and Content of the Environmental Analysis
- **CEC Presentation**
 - Public participation and California Native American tribal consultation opportunities
- **Government Comments**
 - California Native American tribes
 - Elected Officials
 - Government Agencies
- **Public Comment**
- **Next Steps**
- **Closing Comments**
- **Adjourn**



**The California Energy
Commission is leading the
state to a 100% clean energy
future for all.**



Primary Functions of the California Energy Commission



Advancing State Energy Policy



Investing in Energy Innovation



Developing Renewable Energy



Preparing for Energy Emergencies



Achieving Energy Efficiency



Transforming Transportation



Overseeing Energy Infrastructure



CALIFORNIA ENERGY COMMISSION

OUR FIVE COMMISSIONERS



David Hochschild
CHAIR



Siva Gunda
VICE CHAIR



Noemí Otilia Osuna Gallardo
COMMISSIONER



J. Andrew McAllister, Ph.D.
COMMISSIONER



Nancy Skinner
COMMISSIONER

Leading the state to a 100% clean energy future for all.



WELCOME



Opt-In Certification Process

Presented by Kaycee Chang

Supervisor, CEQA Project Management Unit



Opt-In Certification Quick Facts

- Certain clean energy development projects may choose this consolidated state option
- CEC is the CEQA lead agency



Geothermal



Solar photovoltaic or terrestrial wind



Energy storage systems



Stationary power plant using thermal energy



Specific manufacturing or assembly facilities for clean energy



Hydrogen production



Opt-In Agency Coordination





CEC Findings Required to Approve Opt-In Projects



Signed community benefits agreement



Net positive economic benefit to the local government that would have had permitting authority (rebuttable presumption)



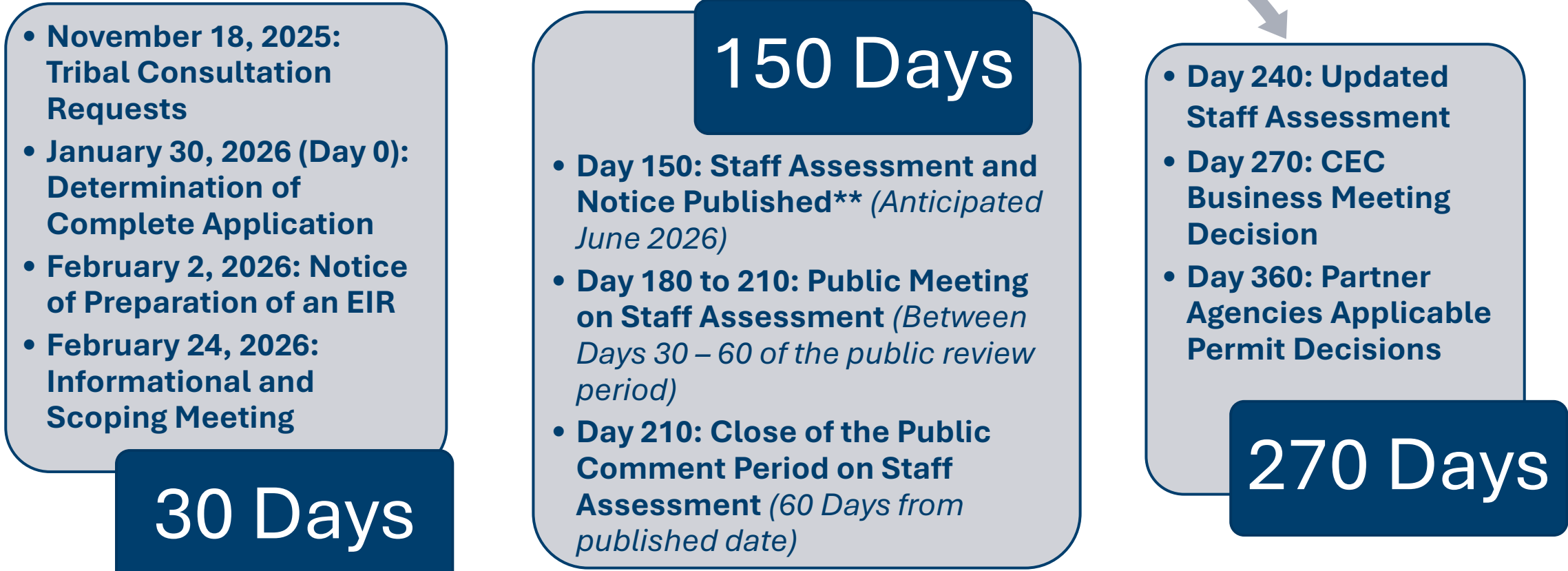
Commits to paying prevailing wage to skilled and trained workforce



Significant effects of the project will be avoided or mitigated, or statement of overriding considerations for significant effects found infeasible to avoid or mitigate



270 Day Process Milestones



**These Deadlines are subject to any substantial changes made to the project or certain other events occurring after an application is deemed complete.



Compliance, Monitoring, and Enforcement



If a proposed project is certified by the CEC, then during the operational life of the facility, CEC staff will:

- Verify compliance with license
- Perform formal site inspections
- Require monthly and annual compliance reports
- Review monthly and annual compliance reports
- Investigate complaints
- Conduct unannounced inspections



CEC Opt-In Webpage

CA.gov Share: f X in ✉ About Careers Contact Events Newsroom Resources Translate Settings

CALIFORNIA ENERGY COMMISSION

Enter keywords, e.g. Energy Code

HOME PROCEEDINGS RULES AND REGULATIONS PROGRAMS AND TOPICS FUNDING DATA AND REPORTS

California Energy Commission > Programs and Topics > All Topics > Power Plants > Opt-In Certification Program

Opt-In Certification Program

Permitting is crucial to deploy renewable energy power plants, which are essential to meet the state's climate goals. With half a century of permitting experience under the California Environmental Quality Act, Assembly Bill 205 (2022) has broadened the California Energy Commission's (CEC) authority. This expansion allows the CEC to oversee the permitting of clean and renewable energy facilities, including solar photovoltaic, onshore wind, and energy storage systems, and facilities that produce or assemble clean energy technologies or their components. Known as the Opt-In Certification Program, this permitting process offers developers an optional pathway to submit project applications, facilitating faster deployment of renewable technologies.

POWER PLANTS

- Alphabetical Power Plant Listing
- Power Plant Compliance and Siting
- Licensing and Compliance Fees for Facilities
- Opt-In Certification Program**

Opt-In Certification Program

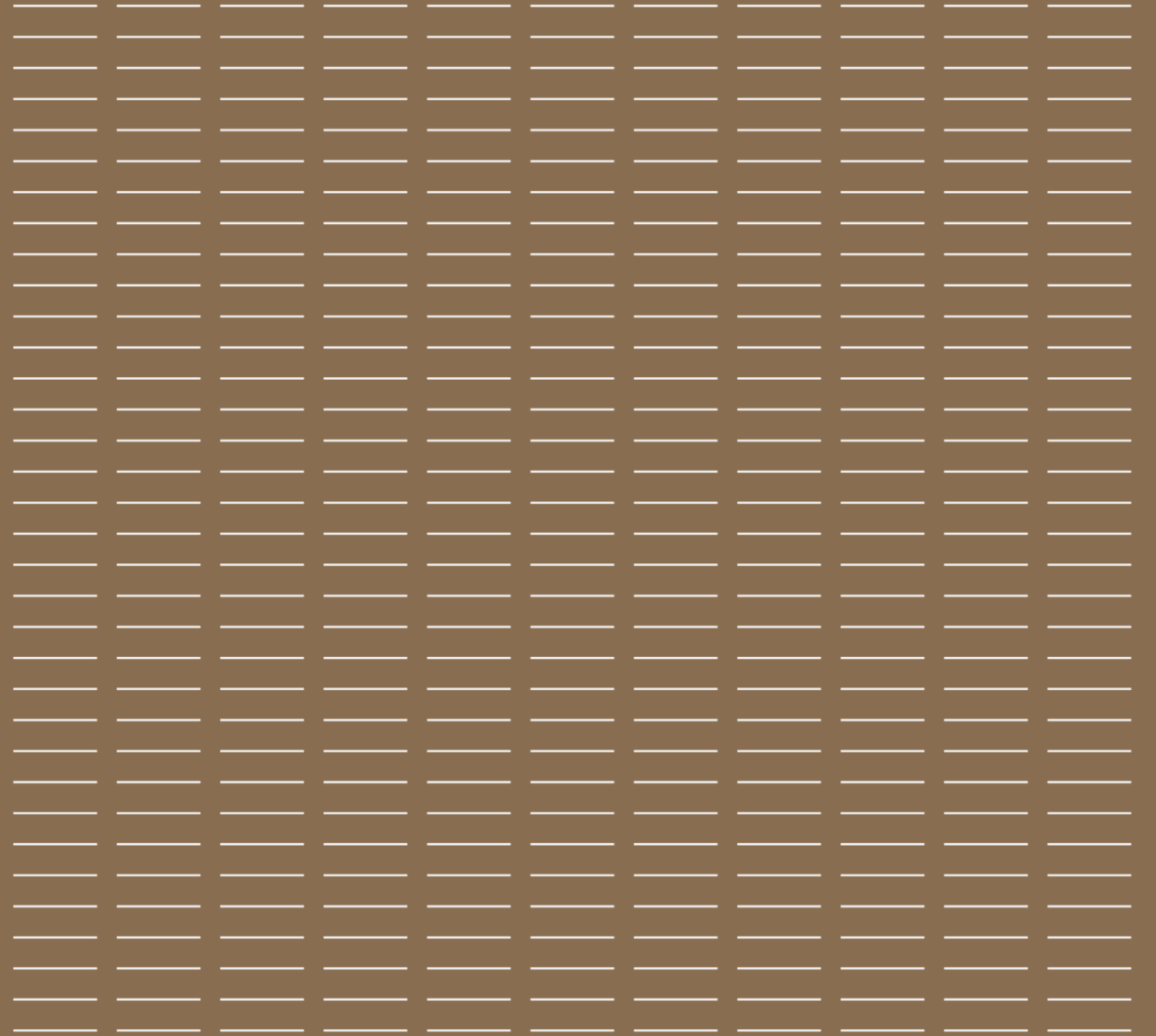
<https://www.energy.ca.gov/programs-and-topics/topics/power-plants/opt-certification-program>

- Proposed projects under review
- Opt-In fact sheet
- Opt-In FAQ
- Opt-In process timeline



Applicant Presentation on the Proposed Project

Prairie Song Reliability Project



About Us

A Trusted Industry Leader

Coval brings deep experience building, owning, and operating large-scale, grid-connected energy resources that strengthen reliability and help keep communities powered during peak demand and unexpected grid outages.

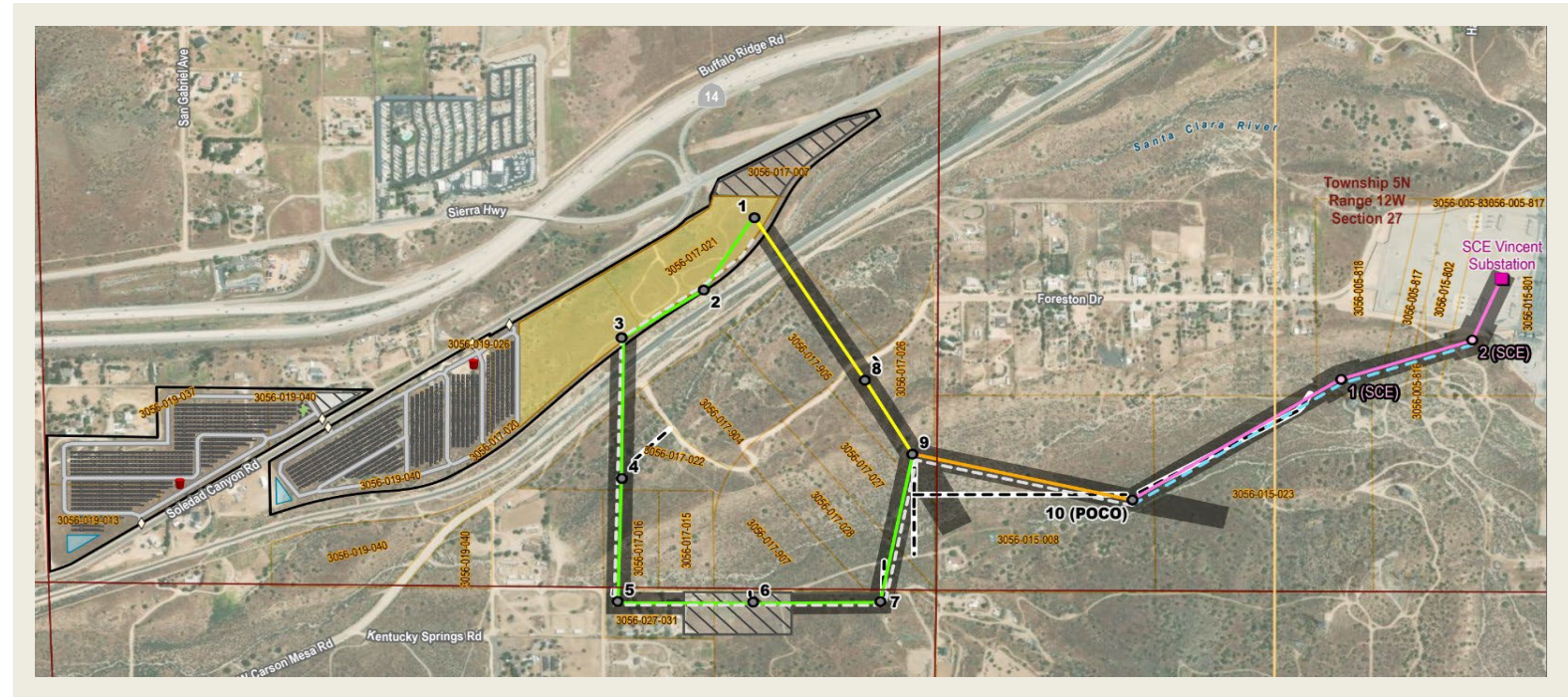
- Proven track record developing energy storage projects across 30+ U.S. states and Canada
- Strict adherence to environmental, safety, and regulatory standards for every project
- Community-first approach with meaningful engagement and localized community benefits
- Local job creation supported by a Union Project Labor Agreement
- Early engagement with Tribal Nations
- Extensive coordination with the dozens of Fire Department and safety officials on rigorous design and safety measures



About Prairie Song Reliability Project

A Critical Investment for California

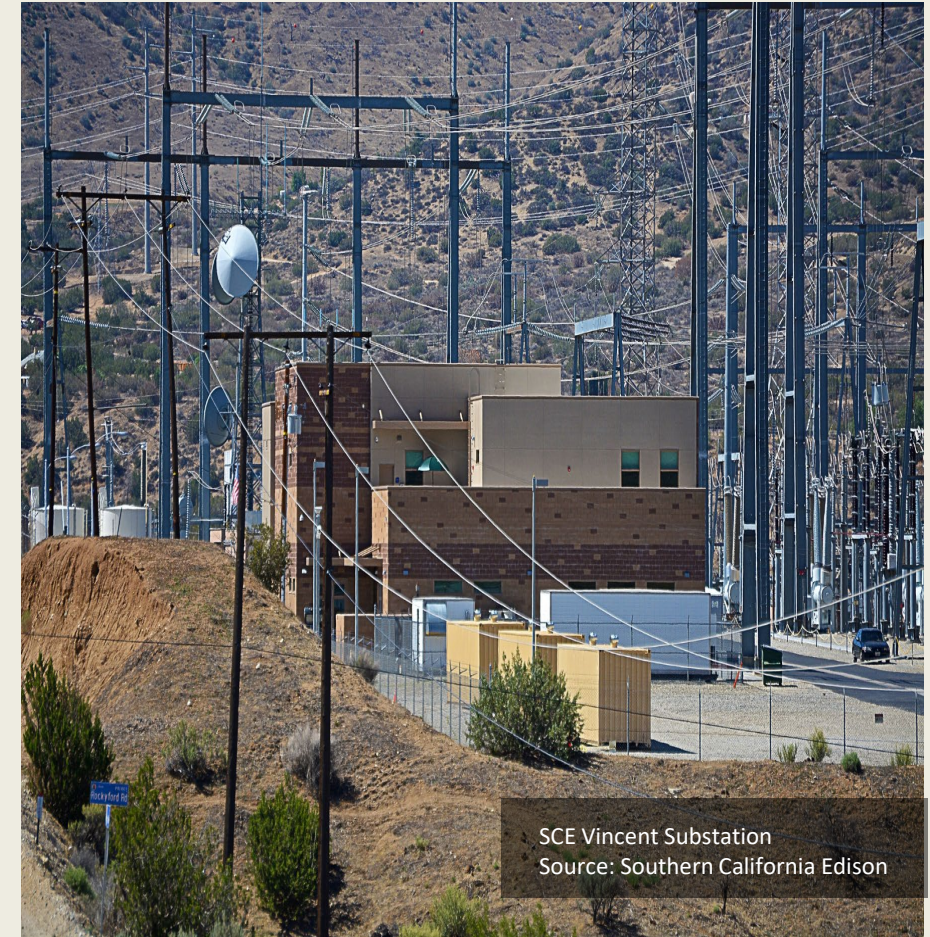
- 1,150 MW / 9,200 MWh
- Standalone battery energy storage system
- Lithium-Iron Phosphate (LFP) chemistry
- Strong economic revenue:
 - \$248M over operational life of project
 - \$98M construction-related tax revenue
 - \$6.2M Annual property tax revenue
 - \$54M to the Acton-Agua Dulce School District
- 300+ union jobs at peak construction
- Executed Project Labor Agreement
- Women's Apprenticeship Program CBA
- \$7+ Million reserved for local community benefits programs focused on economic resilience, job creation, and Environmental Justice
- Acton, California / SCE Vincent Substation



Importance of SCE Vincent Substation

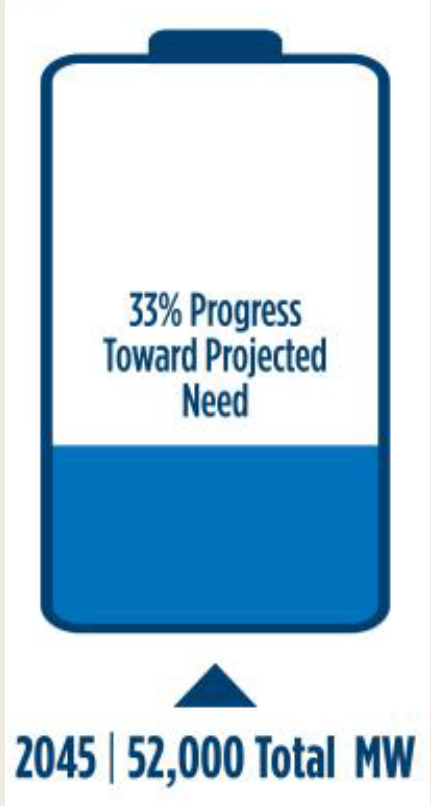
Leveraging Existing Grid Capacity to Meet Ratepayer Protections & Accelerating Demand

- SCE Vincent Substation represents a major 500 / 220 kV bulk transmission hub
- Unlocks existing infrastructure to avoid unnecessary new transmission development
- Direct access to high voltage facilities capable of supporting large scale energy storage
- Strong network topology with multiple transmission paths, enhancing system resilience and reducing outage risk
- Reduced reliance on lower voltage sub-transmission upgrades, helping limit overall system upgrade costs that can impact ratepayers
- Strategically positioned to ideally support LA Basin reliability and renewable integration, enabling cleaner energy delivery to the region
- Located within an established transmission corridor, minimizing environmental disturbance and new land impacts
- Pursuant to the Warren-Alquist Act, no feasible or environmentally superior alternative was identified that would meet project objectives while providing comparable infrastructure, reliability, environmental, and ratepayer benefits.

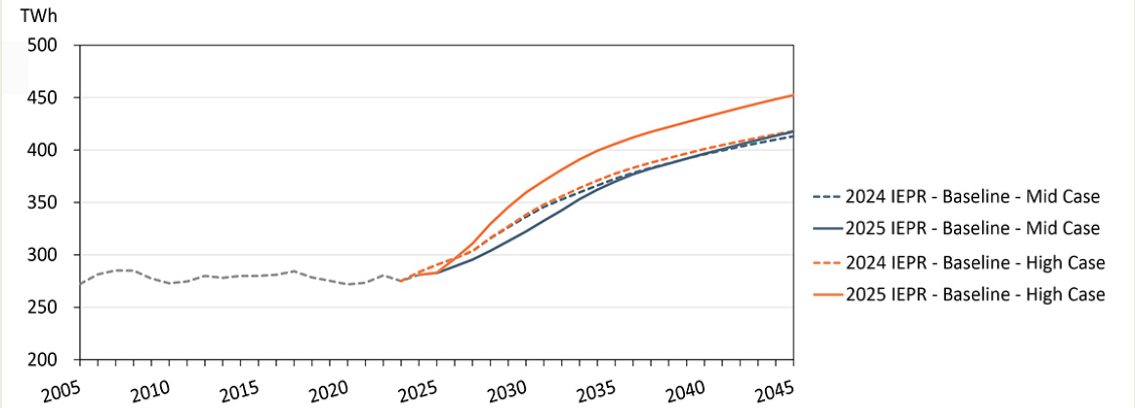


California's Need for 35,000 MW of Energy Storage Capacity by 2045

Keeping the lights on and communities strong depends on the responsible, safe, and large-scale deployment of energy storage



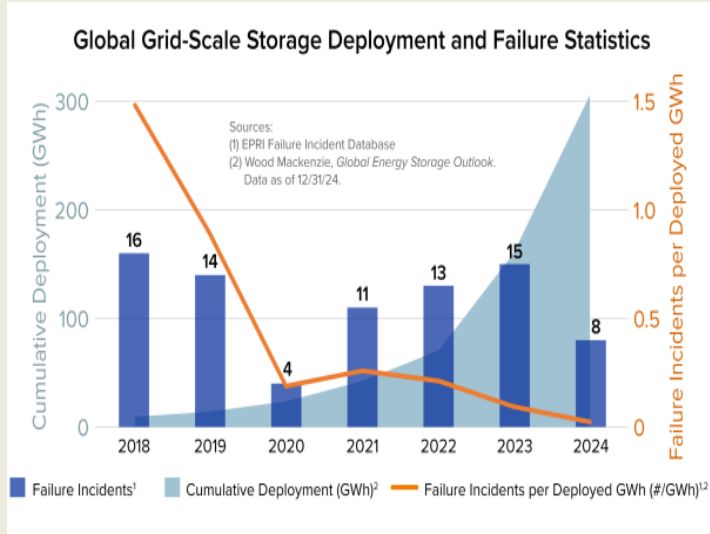
- 52,000 MW of storage needed by 2045 to meet long-term grid reliability needs
- 17,000+ MW online today
- 35,000 MW still needed -- ~70% of the 2045 target remains unmet
- 7-10 GW of natural gas retirements by early 2030's
- Energy storage is the critical resource to replace retiring capacity and maintain reliability



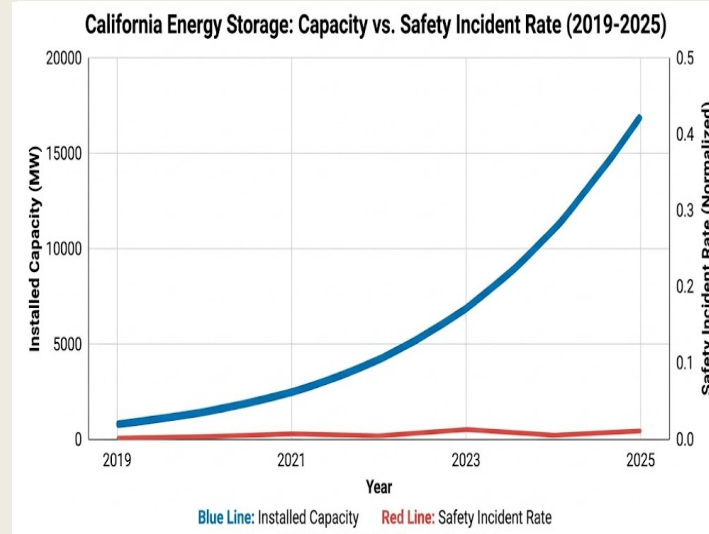
California Electricity Demand Is Rising Sharply

- Total electricity demand projected to reach ~450 TWh by 2045
- ~55% to 60% growth from today's levels
- Summer 2024 hottest on record -- Zero Flex Alerts
- Batteries supplied up to 20% of evening peak demand during heat waves

Normalized battery incident rates remain well below 1% in California and globally, despite significant growth in deployment

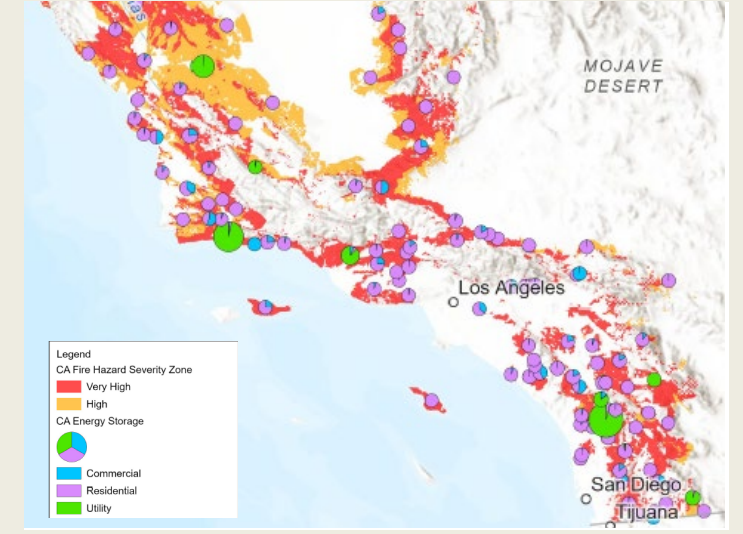


- Global grid-scale battery deployment increased over 10x from 2018 to 2024 while incident rate dropped by 98%
- 2024 shows the highest deployment levels on record with one of the lowest incident rates
- Data reflects industry learning, stronger codes and standards, improved system integration, and better fire safety practices



- Installed battery capacity grew from ~1 GW in 2019 to ~17 GW in 2025, 15x growth
- Safety incident rate remained low and relatively flat during rapid expansion; did not scale with deployment
- CA saw record deployment levels in 2025 with no proportional increase in safety events

Source: California Energy Commission



- BESS are prevalent everywhere in California
- Residential, Commercial, Utility Scale BESS are already operating in High and Very High Fire Hazard Severity Zones

Technical Studies & Safety

Technical Studies

- Aquatic Resources Delineation Report
- Biological Resources Report
- Cultural Resources Technical Report
- DOD / FAA Assessment
- Geotechnical Study
- Ground Water Feasibility Study
- Hazardous Materials Assessment
- Health and Safety Plan
- Hydrology Study
- Noise Study
- Paleontological Resource Assessment
- Phase I Environmental Site Assessment
- Socioeconomics Report
- Transportation Report
- Visual Simulations
- Water Supply Assessment

Public Health

- Plume Study Based on UL9540A tests
- Community Risk Assessment
- Expanded Plume Study including Full Container Burn and Expanded Analysis of Toxic Air Contaminants
- Hazard Mitigation Analysis
- Emergency Response Plan
- Building & Safety Code Compliance

Wildfire Safety

- Site specific wildfire study identifying that site is in a flat area with fire breaks created by the highway and railroad tracks on both side
- Minimum 100' setbacks from property line to BESS -- 10x recognized safety standard
- Minimum 8' perimeter cement blast wall
- Fire Water Assessment – two 40K gal tanks on site
- Construction and Operational Fire Risk Management Plans

Water Protection

- Containers prevent leaks from contacting the ground
- No water directed on a container in the event of an incident – keeping fire water clean
- Spill prevention and counter measure plan to be employed by O&M

A Commitment to Community Giving Where It Matters Most



Early Childhood Education
& K-12 Enrichment



Family Health
& Wellness



Women's Workforce
Training & Trades Readiness



Senior Care
& Assisted Living



Veterans Workforce
Transition Programs



Union Workforce
Development & Training



STEM Access
& Education



Energy Assistance
Programs

Community Partnership Initiatives

- ✓ Direct-to-consumer energy resilience installation projects
- ✓ Open space preservation, conservation, and equestrian resources
- ✓ Public safety and emergency preparedness
- ✓ Local school and early childhood development funding
- ✓ Community priorities identified in comments from Town Council

Matt Quinn

Fire Service Experience

- 20 years as a firefighter and fire officer
- Battalion Chief in HazMat Operations

Education

- BS in Chemical Engineering (Penn)
- MA in Public Administration (NYU)

Pro Board Certifications

- Fire Officer, Fire Instructor I and II
- Hazardous Materials - Operations
- Incident Safety Officer



FIRE & RISK
★ ★ ALLIANCE ★ ★

INDOOR BESS

OUTDOOR BESS



Battery racks
inside building

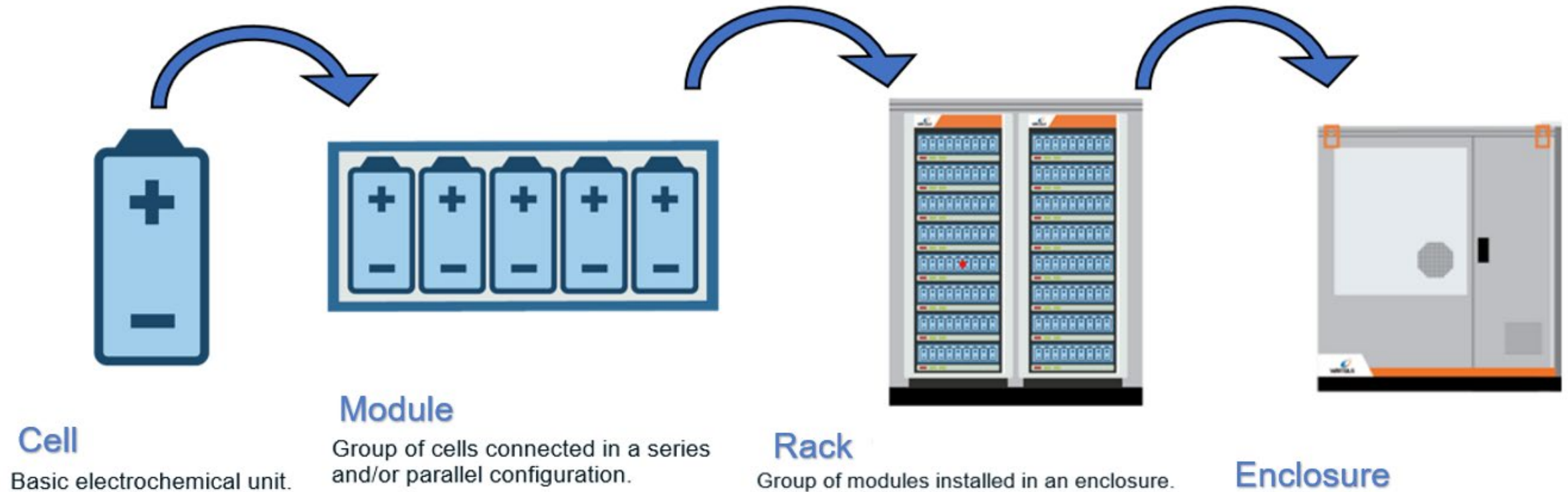
Inverters/
Transformers



Battery Enclosures

Inverters/Transformers

ENCLOSURE COMPONENTS



BATTERY CHEMISTRY



NMC (Nickel-Manganese-Cobalt)

Cathode components: *Toxic heavy metals*

- Nickel (Ni)
- Manganese (Mn)
- Cobalt (Co)

Higher thermal runaway risk

Failure produces metal aerosols

LFP (Lithium Iron Phosphate)

Cathode components: *Non-toxic substances*

- Iron (Fe)
- Phosphate (PO₄)

Higher thermal stability

Failure produces buoyant toxic gases

All Li-ion batteries contain lithium salts that travel between electrodes – NOT lithium metal

MOSS LANDING BESS FIRE

Why it was different – and won't be repeated



Why Moss Landing Was Unique

- Indoor system in large repurposed gas plant
- NMC chemistry (more volatile than LFP)
- Built before CA adopted IFC 2018 fire codes for BESS (2020)
- History of prior thermal incidents
- 100,000 batteries in single building



Industry Safeguards Today

- UL 9540 & UL 9540A fire propagation testing now standard
- NFPA 855 governs BESS installation
- IFC 2018+ adopted in most jurisdictions
- Outdoor containerized designs now preferred
- LFP chemistry now dominant



UL9540A Fire Testing

Gas		Measured %	PPM Conversion	CDC IDLH Thresholds
Carbon Monoxide	CO	4.69	46,900 PPM	1,200 PPM
Carbon Dioxide	CO2	15.27	152,700 PPM	40,000 PPM
Hydrogen	H2	54.47	544,700 PPM	N/A
Methane	CH4	5.42	54,200 PPM	N/A

Gas	Source in BESS	In Residential Fires?	Residential Sources
HF	Fluorinated electrolyte decomposition	YES	Teflon, plastics, carpeting
HCN	Nitrogen-containing materials	YES	Wool, silk, nylon, polyurethane
HCl	PVC components	YES	PVC pipe, wire insulation, vinyl



Staff Assessment and Scope and Content of the Environmental Analysis

Presented by Lisa Worrall

Project Manager, CEQA Project Management Unit



What is a Staff Assessment?

- Comprehensive, independent, technical and environmental review prepared by the CEC
- Includes an EIR following the requirements of the California Environmental Quality Act
- Key Staff Assessment information include:
 - Engineering Evaluation
 - Environmental Impact Assessment
 - Mandatory Opt-In Requirements
 - Environmental Justice Analysis
 - Compliance Conditions
 - Compliance Monitoring Requirements



Staff Assessment Purpose

- Provide objective information regarding the project's potential effects on the environment
- Identify mitigation to reduce impacts
- Describe a range of reasonable alternatives which would feasibly attain most of the basic objectives of the project
- Evaluate whether the application complies with additional licensing requirements
- Make a recommendation to the CEC Commissioners on whether to approve the project



Environmental Impact Assessment and Engineering Evaluation

Environmental Impact Assessment
Air Quality
Biological Resources
Climate Change and Greenhouse Gas Emissions
Cultural and Tribal Cultural Resources
Efficiency and Energy Resources
Geology, Paleontology, and Minerals
Hazards, Hazardous Materials/Waste, and Wildfire

Environmental Impact Assessment
Land Use, Agriculture, and Forestry
Noise and Vibration
Public Health
Socioeconomics
Solid Waste Management
Transmission Line Safety and Nuisance
Transportation
Visual Resources
Water Resources
Alternatives

Engineering Evaluation
Facility Design
Facility Reliability
Transmission System Engineering
Worker Safety and Fire Protection



Mandatory Opt-In Requirements

Requirements for Covered Project
Under the Labor Code

Legally Binding and Enforceable
Community Benefits Agreement(s)

Net Positive Economic Benefit
to the Local Government*

** Rebuttable presumption*



Preliminary Evaluation

Probable Environmental Effects

- Air Quality
- Biological Resources
- Cultural and Tribal Cultural Resources
- Geology, Paleontology, and Minerals
- Hazards, Hazardous Materials and Wildfire
- Land Use and Agriculture
- Noise and Vibration
- Public Health
- Transportation
- Visual Resources
- Water Resources
- Worker Safety and Fire Protection



Comments Submitted by the Public

Total Comments: 160 +

- Potential for fire/thermal runaway
- Safety of battery energy storage facilities
- Concerns over toxic air emissions
- Potential conflicts with local land use designations
- Project location
 - Proximity to homes, water source (Palmdale Lake), transportation corridor
 - Industrialization of rural area
 - High fire hazard severity zone
- Alternative location: Mojave Desert, less populated area

CA.gov | Contact Us | Accessibility

CA.GOV CALIFORNIA ENERGY COMMISSION

Home About Us Analysis & Stats Efficiency Funding Power Plants Renewables Research Transportation

Docket Log

Docket: 25-OPT-02
Project Title: Prairie Song Reliability Project
Generated On: 2/13/2026 8:11:19 AM

Include: Documents Comments Transcripts

↓ TN #	Docketed Date	Document Title	Exhibit #	To	From
268555	2/10/2026	Email Correspondence between Applicant and the US Army Corps of Engineers 2 page(s)		CEC Docket Unit	Dudek
268447	2/3/2026	Who is LACo Building Trades Council Socioeconomics 1 page(s)		CEC Docket Unit	Ruthie Brock



California Battery Energy Safety Collaborative

MISSION

ADVANCE BATTERY SAFETY
AND RELIABILITY



CALIFORNIA
AIR RESOURCES BOARD



Cal OES
GOVERNOR'S OFFICE
OF EMERGENCY SERVICES



Discussion of Worker Safety, Fire Protection, BESS Incidents, and Safety Analysis

Presented by Dr. Alvin Greenberg



Worker Safety and Fire Protection

Probable Environmental Effects

- Review history of Battery Energy Storage Systems (BESS) fire incidents and the evolving strategies for BESS safety
- Considers potential impacts and available mitigation measures for the transporting of the battery storage containers to the proposed project site.



Previous Battery Energy Storage System Incidents

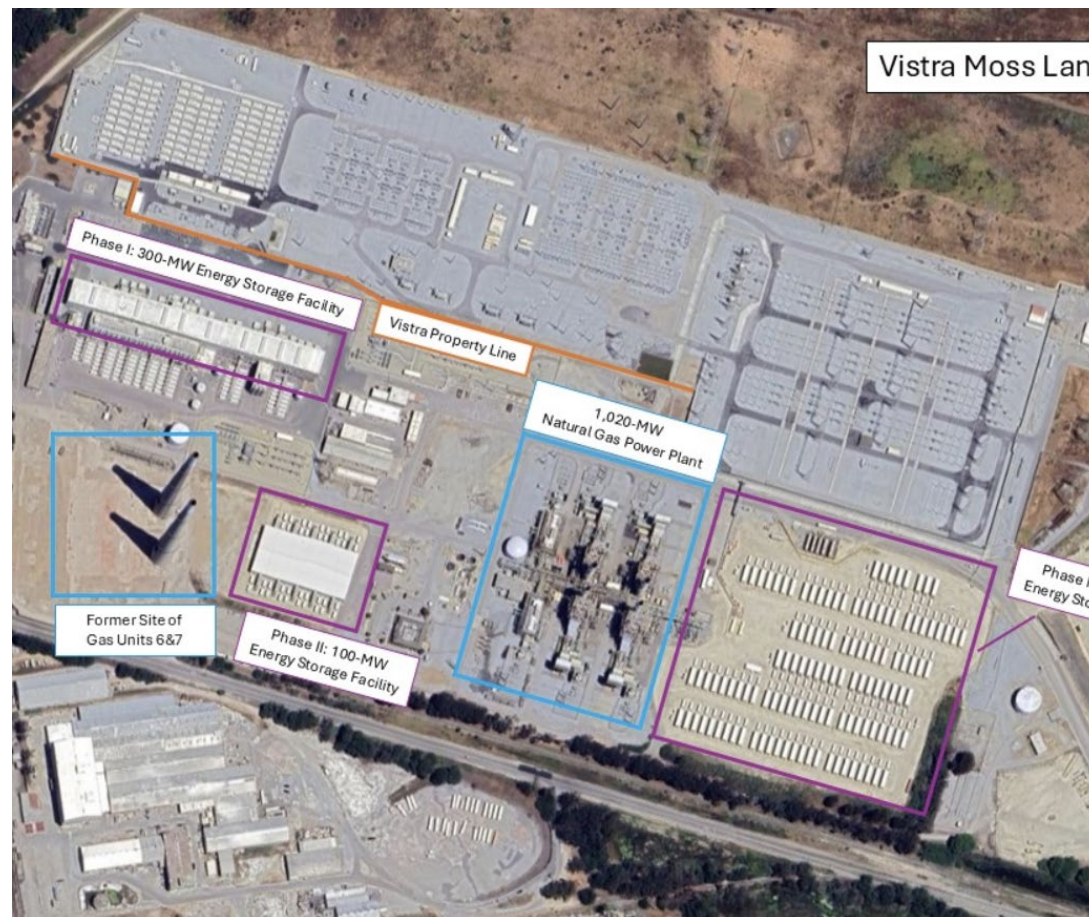
Vistra Moss Landing Energy Storage Facility*, Phase 1

Capacity: 300 MW, up to 1,200 MWh

Chemistry: Nickel, Manganese, Cobalt Lithium-Ion

Housed: In a refurbished concrete building

*Not certified by the CEC



Source: Vistra.



Previous Battery Energy Storage System Incidents Continued

Gateway Energy Storage Facility*

Capacity: 250 MW, up to 1,000 MWh

Chemistry: Nickel, Manganese, Cobalt Lithium-Ion

Housed: In a building

*Not certified by the CEC



Source: cbcsteelbuildings.com



Evolving Strategies for Battery Safety

Layout

Older Units Indoors



New Units Outdoors



Source: Vistra (Moss Landing)

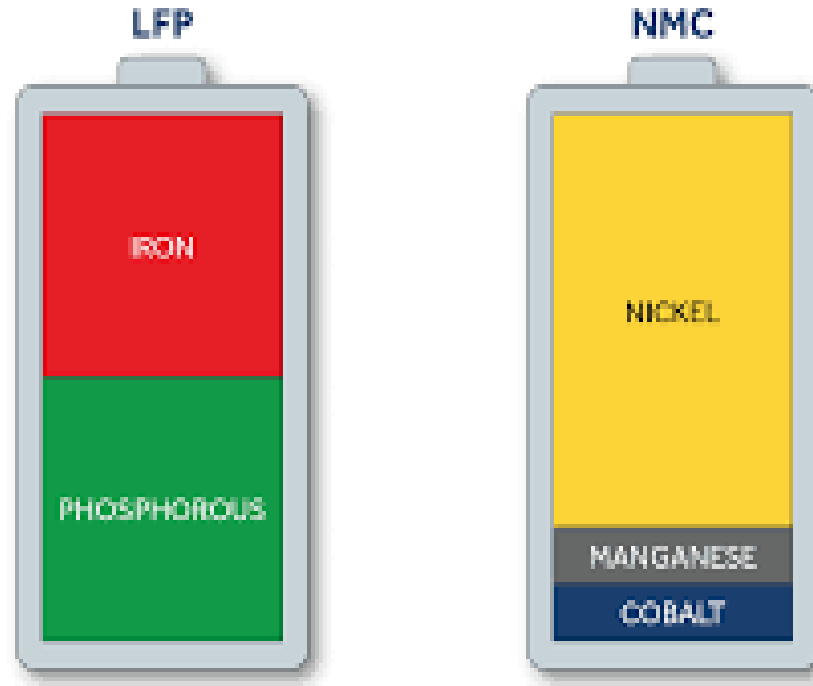


Source: Arevon Asset Management



Evolving Strategies for Battery Safety

Battery Chemistries



Source: Mayfield Renewables accessed at:

<https://www.mayfield.energy/technical-articles/comparing-nmc-and-lfp-lithium-ion-batteries-for-ci-applications/>

LFP = Lithium Iron Phosphate

NMC = Nickle Manganese Cobalt



Battery Systems Certified by CEC



Henrietta
BESS

Kings County



Border
BESS

City of San
Diego



Russell
City
Energy
Center
BESS

City of
Hayward



Marsh
Landing
BESS

Contra Costa
County



Stanton
Energy
Reliability
Center
BESS

Orange
County



Sentinel
Energy
Center
BESS

Riverside
County



simulation

Darden
Renewable
Energy
Project

Fresno
County
*under
construction*



Risk Assessment and Management

Identify potential hazards

Assess probability and impacts

Recommend measures to mitigate risks/impacts



CEC Safety Evaluations

CEC will be evaluating projects against these new BESS safety standards



Solutions





Installation Safety Standard



National Fire Protection Association (NFPA) Standards for Installation of Stationary Energy Storage Systems

CEC staff requirements:

- Be compliant with the new 2026 Edition of **NFPA 855 Code**

Key Updates to 855:

- Hazard Mitigation Analysis
- Enhanced Testing Requirements
- Thermal Runaway Protection



UL Safety Standards



UL Solutions 9540-A Test Method for Evaluating Thermal Runaway

CEC staff requirements:

- Be certified to the latest edition of the **UL 9540 Standard and to UL 1973**



State Fire Safety Code



California Fire Code Chapter 12 Fire Safety Requirements for Stationary Lithium-Ion Battery Energy Storage Systems

CEC staff requirements:

- Apply the Fire Code provisions of Chapter 12



Operation and Maintenance Standards



California Public Utilities Commission General Order 167-C

CEC staff requirements:

- Review and ensure that the project follows the new operation and maintenance requirements of GO 167-C



Mitigation Measures Already Required for BESS Projects



Deflagration panels



Thermal infrared cameras



Construction and operations & maintenance fire protection program



Command and control center



Real-time environmental air monitoring



Partnerships for enhanced safety



Biological Resources

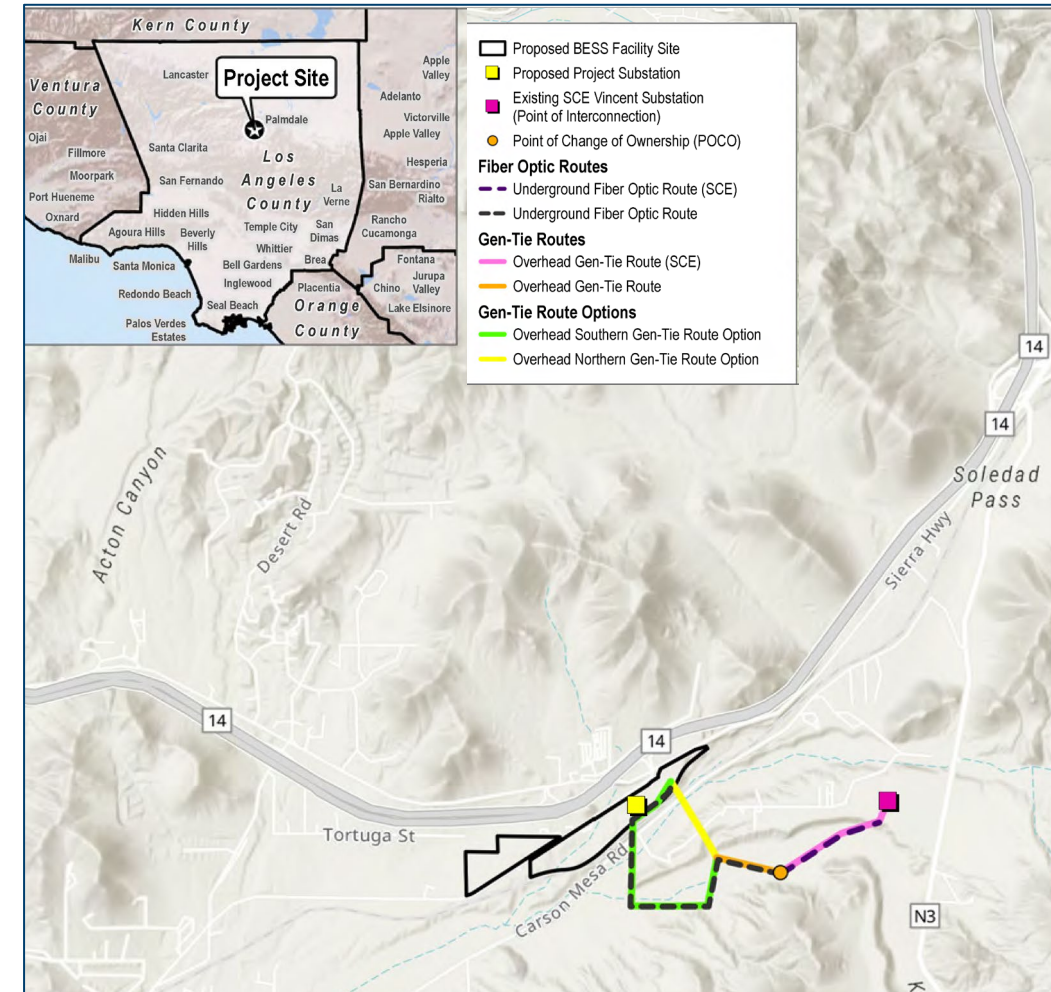
Probable Environmental Effects

Direct and Indirect Effects to Special Status Plants & Vegetation

- Raven's blazing-star – California Rare Plant Rank (CRPR) 1B.3
- Short-joint beavertail cactus – CRPR 1B.2
- Mason's neststraw - CRPR 1B.1
- California juniper tree woodlands - a sensitive community

Direct and Indirect Effects to Special Status Wildlife

- Crotch's bumblebee – State Candidate Species
- Southern California ringtail – State Fully Protected Species
- Mountain lion; Southern California/Central Coast Evolutionarily Significant Unit – State Threatened Species



Source: Based on Figure 1-1 Regional Map, TN 264413



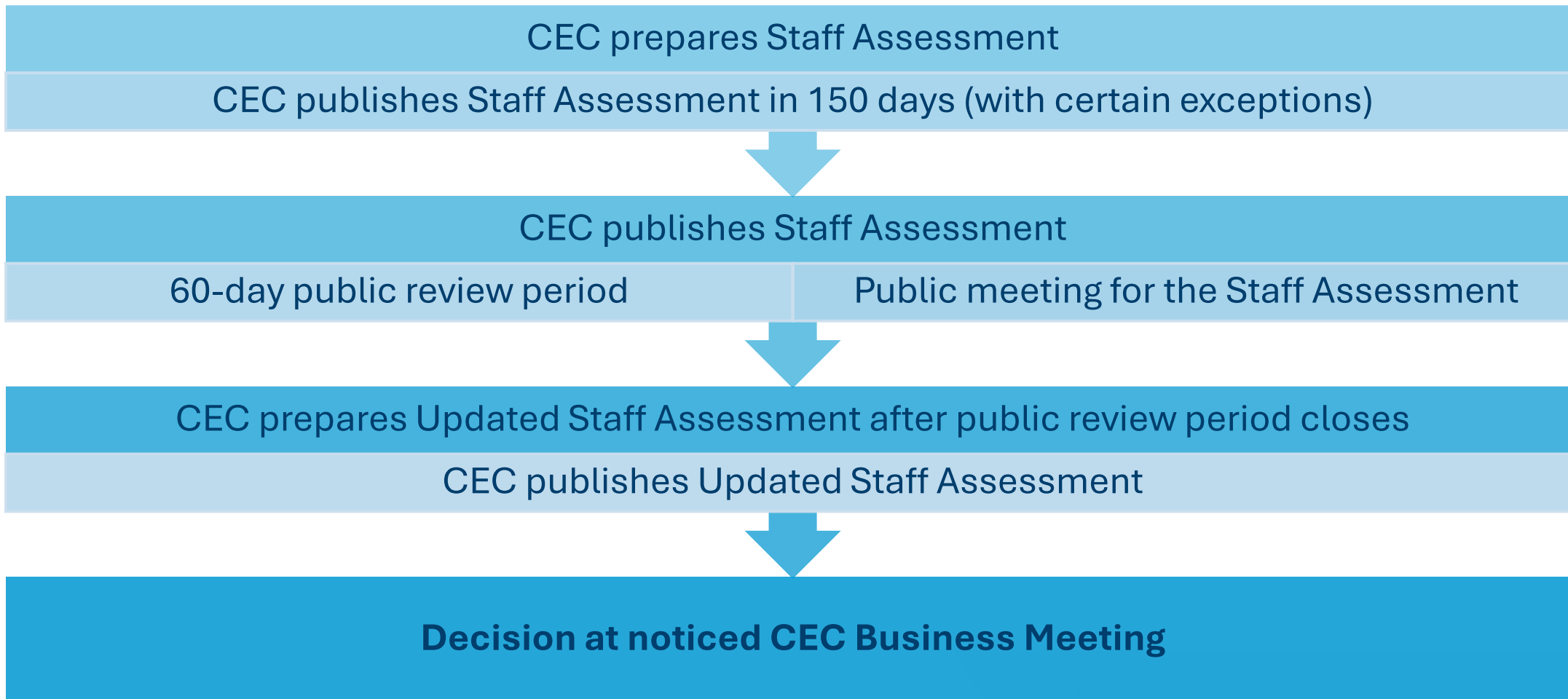
Biological Resources

Probable Environmental Effects

- Disruption of nesting for common and special-status bird species under the Migratory Bird Treaty Act and California Fish and Game Code (Sections 3503, 3503.5, and 3513)
- Direct impacts to native vegetation communities due to grading and vegetation removal
- Direct impacts to special status species evaluated under CEQA
- Impacts to potential state jurisdictional waters
- Impacts within the Santa Clara River Significant Ecological Area (SEA)



Staff Assessment / Next Steps





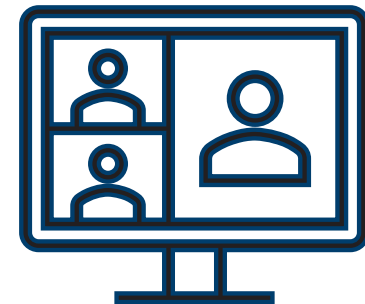
Office of the Public Advisor, Energy Equity, and Tribal Affairs

Presented by Ryan Young, Public Advisor



Office of the Public Advisor, Energy Equity, and Tribal Affairs

Advise and support the CEC, stakeholders, California Native American tribes, and interested members of the public in meaningful engagement and participation in CEC programs, policies, and energy equity efforts.





Multiple Ways to Participate

1. Follow
2. Comment
3. Tribal Consultation





Follow Via Web, Email, and Events

Prairie Song Reliability Project

PROJECT OWNER
Prairie Song Reliability Project, LLC.

DOCKET NUMBER
25-OPT-02

CAPACITY
1,150 MW (9,200 MWh)

LOCATION
Los Angeles County

TECHNOLOGY
Battery Storage System

PROJECT STATUS
Under Review

PROJECT TYPE
Opt-In

ORIGINAL PROCEEDING

[Submit e-Comment](#)

[Submit e-Filing](#)

[Docket Log \(25-OPT-02\)](#)

[Exhibit List](#)

[Proof of Service List](#)

[Search All Power Plant Documents](#)

CONTACTS

PROJECT MANAGER
Lisa Worrall
Stepsiting@energy.ca.gov

(Please enter project name in the email subject line)
916-661-8367

Project Description

Prairie Song Reliability Project, LLC (applicant), proposes to construct, own, and operate the Prairie Song Reliability Project (project). The project is a 1,150-megawatt (MW), approximately 9,200-megawatt hour (MWh), battery energy storage system that would be constructed on privately owned land in the community of Acton in unincorporated Los Angeles County, California. Development includes the containerized battery energy storage system with individualized fire prevention systems, a project substation, inverters, and related facilities, such as fencing, operations and maintenance buildings, stormwater retention and infiltration basins, and communication systems. The project would connect to the existing Southern California Edison (SCE) Vincent Substation via either a 1.1-mile or a 1.8-mile generation intertie (gen-tie) line

Visit CEC project webpage for links to comment, sign up for email updates, project docket, project information, and more:
<https://www.energy.ca.gov/powerplant/battery-storage-system/prairie-song-reliability-project>

California ENERGY COMMISSION

CA.gov | Contact Us | Accessibility | Quick Links

[Home](#) | [About Us](#) | [Analysis & Stats](#) | [Efficiency](#) | [Funding](#) | [Power Plants](#) | [Renewables](#) | [Research](#) | [Transportation](#)

Docket Log

Docket: 25-OPT-02
 Project Title: Prairie Song Reliability Project
 Generated On: 2/14/2026 10:12:49 AM

Include: Documents Comments Transcripts

↓ TN #	Docketed Date	Document Title	Exhibit #	To	From
268647	2/13/2026	Aviso de la reunión informativa y para determinar el alcance ambiental del Proyecto de Fiabilidad de Prairie Song propuesto Aviso de la reunión informativa y para determinar el alcance ambiental del Proyecto de Fiabilidad de Prairie Song propuesto 24 de febrero de 2026 3:00 p.m. – 8:00 p.m. 6 page(s)		CEC/Docket Unit	California Energy Commission
268646	2/13/2026	Coalition for Clean Air Comments - Coalition for Clean Air Comment on Prairie Song Reliability Project Air Quality, Public Health 3 page(s)		CEC/Docket Unit	Coalition for Clean Air

Visit Docket 24-OPT-03 for free 24/7 access to project documents:
<https://efiling.energy.ca.gov/Lists/DocketLog.aspx?docketnumber=25-OPT-02>



Verbal and Written Comments

A screenshot of the California Energy Commission's "Add Comment" web form. The page features the CA.GOV logo and the California Energy Commission name at the top. Below the header, there is a search bar for "Select a Proceeding" with a dropdown menu and a search button. A message box indicates that a proceeding must be selected before continuing. At the bottom, there is contact information for e-commenting: "For any questions regarding e-commenting, please send an e-mail to e-CommentHelp@energy.ca.gov or call 800-622-6228 or 916-654-4488." The footer includes links for Accessibility, Conditions of Use, and Privacy Policy, along with a copyright notice for 2016 State of California.

<https://www.energy.ca.gov/events>

<https://efiling.energy.ca.gov/EComment/ECommentSelectProceeding.aspx>



Tribal Consultation

The CEC invites consultation in this proceeding with California Native American tribes.

Contact: Patrick Riordan, Energy Commission Specialist I,
Cultural Resources Unit; patrick.riordan@energy.ca.gov;
(279) 226-1087



Thank You

Email

publicadvisor@energy.ca.gov

Phone

(916) 957-7910

Online

<https://www.energy.ca.gov/about/divisions-and-offices/office-public-advisor>



Government Comment

California Native American tribes

Government Agencies

Elected Officials



Break

Please Return at



Public Comment



Public Comment

Instruction

- 2 minutes or less per person
- 1 representative per organization

Zoom App/Online

- Click “raise hand”

Telephone

- Press *9 to raise hand
- Press *6 to mute and unmute

When called upon

- CEC staff will open your line
- Unmute, spell name and state affiliation, if any

2-MINUTE TIMER





Break

Please Return at



Public Comment Continued



Public Comment

Instruction

- 2 minutes or less per person
- 1 representative per organization

Zoom App/Online

- Click “raise hand”

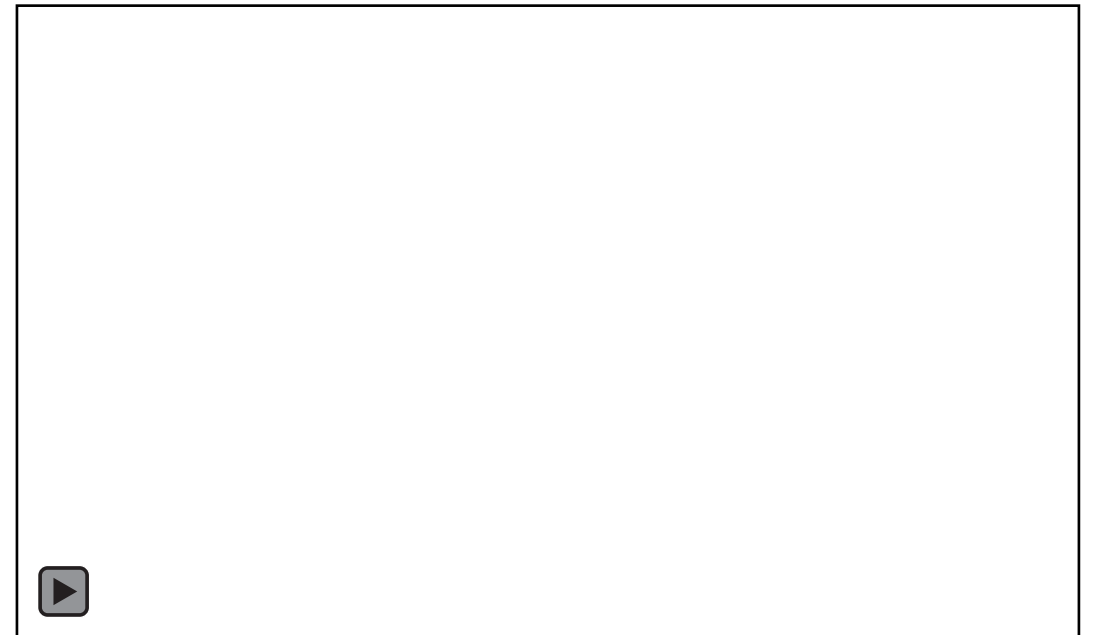
Telephone

- Press *9 to raise hand
- Press *6 to mute and unmute

When called upon

- CEC staff will open your line
- Unmute, spell name and state affiliation, if any

2-MINUTE TIMER





Comments Due

March 4, 2026, on the Notice of Preparation and Scope and Content of the EIR

Methods to Submit

1. Submit e-comments to project’s docket, accessible at: <https://efiling.energy.ca.gov/Ecomment/Ecomment.aspx?docketnumber=25-OPT-02>

2. Email comments to: docket@energy.ca.gov*
**Please include "25-OPT-02 Prairie Song Reliability Project NOP Comments" in subject line*

3. Send via U.S. mail, public comments postmarked by March 4, 2026, to:

Re: Prairie Song Reliability Project
California Energy Commission
715 P Street, MS 40
Sacramento, CA 95814

Docket Log

Docket: 25-OPT-02
Project Title: Prairie Song Reliability Project
Generated On: 2/13/2026 8:11:19 AM

Include: Documents Comments Transcripts

↓ TN #	Docketed Date	Document Title
268555	2/10/2026	Email Correspondence between Applicant and the US Army Corps of Engineers 2 page(s)
268447	2/3/2026	Who is LACo Building Trades Council Socioeconomics 1 page(s)
268445	2/2/2026	Notice of Preparation of a Draft Environmental Impact Report for the Prairie Song Reliability Project (25-OPT-02) 15 page(s)



Next Steps

Timeframe	Activity
March 4, 2026	Close Public Comment Period
June 2026	File Staff Assessment

Visit CEC project webpage for links to comment, sign up for email updates, project docket, project information, and more: <https://www.energy.ca.gov/powerplant/battery-storage-system/prairie-song-reliability-project>





Thank You

List of CEC Presenters (in order of first appearance)

- Kaycee Chang, CEQA Project Management Unit Supervisor
- Drew Bohan, Executive Director
- Noemi Gallardo, Commissioner
- Caroline Grey, Senior Advisor to Chair Hochschild
- Ryan Young, Public Advisor
- Lisa Worrall, Project Manager
- Dr. Alvin Greenberg, Risk Science Associates, consultant to CEC

Siting, Transmission, and Environmental Protection Division

STEPsiting@energy.ca.gov