

<b>DOCKETED</b>	
<b>Docket Number:</b>	24-OPT-04
<b>Project Title:</b>	Potentia-Viridi Battery Energy Storage System
<b>TN #:</b>	266086
<b>Document Title:</b>	PPP regarding Informational and Environmental Scoping Meeting for the Proposed Potentia-Viridi Battery Energy Storage System
<b>Description:</b>	Power Point Presentation
<b>Filer:</b>	Marichka Haws
<b>Organization:</b>	California Energy Commission
<b>Submitter Role:</b>	Commission Staff
<b>Submission Date:</b>	9/19/2025 4:28:38 PM
<b>Docketed Date:</b>	9/19/2025



# Potentia-Viridi Battery Energy Storage System Application

Informational and Environmental Scoping Meeting

Docket Number: 24-OPT-04

September 18, 2025



# Pledge of Allegiance



**I pledge allegiance to  
the flag of the United  
States of America, and  
to the Republic for  
which it stands, one  
Nation under God,  
indivisible, with liberty  
and justice for all.**



# Meeting Logistics

- Meeting is hybrid and recorded.
- Instruction for Zoom closed captioning service:
  - **To Activate:** click on “live transcript” icon and then choose either “show subtitle” or “view full transcript”.
  - **To Stop:** click "exit" from “live transcript” or select “hide subtitle” icon.
- Please be mindful of the audio for those participating online; speak slowly and clearly.
- Agenda includes time for public comment and input.





# Agenda

---

- **Welcome**
- **CEC Staff Presentation**
  - Opt-In Certification Program
- **Applicant Presentation**
  - Proposed project
- **CEC Staff Presentation**
  - Staff Assessment and Scope and Content of the Environmental Analysis
- **CEC Presentation**
  - Public participation and California Native American tribal consultation opportunities
- **Government Comments**
  - California Native American tribes
  - Government Agencies
  - Elected Officials
- **Public Comment**
- **Next Steps**
- **Closing Comments**
- **Adjourn**

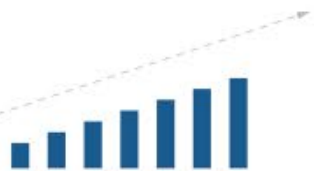


**The California Energy Commission is leading the state to a 100% clean energy future for all.**



PRIMARY FUNCTIONS OF THE

# CALIFORNIA ENERGY COMMISSION



**Advancing State  
Energy Policy**



**Investing in  
Energy Innovation**



**Developing  
Renewable Energy**



**Preparing for  
Energy Emergencies**



**Achieving  
Energy Efficiency**



**Transforming  
Transportation**



**Overseeing  
Energy Infrastructure**



CALIFORNIA ENERGY COMMISSION

# OUR FIVE COMMISSIONERS



**David Hochschild**  
*Chair*



**Siva Gunda**  
*Vice Chair*



**J. Andrew McAllister**  
*Commissioner*



**Noemí Otilia Osuna Gallardo**  
*Commissioner*



**Nancy Skinner**  
*Commissioner*

Leading the state to a 100% clean energy future for all.





# Welcome



# **Opt-In Certification Process**

**Presented by Kaycee Chang  
Supervisor, CEQA Project Management Unit**



# Opt-In Certification Quick Facts

- Certain clean energy development projects may choose a consolidated state permitting option
- CEC is the CEQA lead agency



Solar photovoltaic or terrestrial wind



Energy storage systems



Stationary power plant using thermal energy



Specific manufacturing or assembly facilities for clean energy



Hydrogen production



# Opt-In Agency Coordination







# CEC Findings Required to Approve Opt-In Projects

Provides an overall net positive economic benefit to the local government\*

Entered into one or more legally binding community benefits agreements

Commits to prevailing wage to skilled and trained workforce

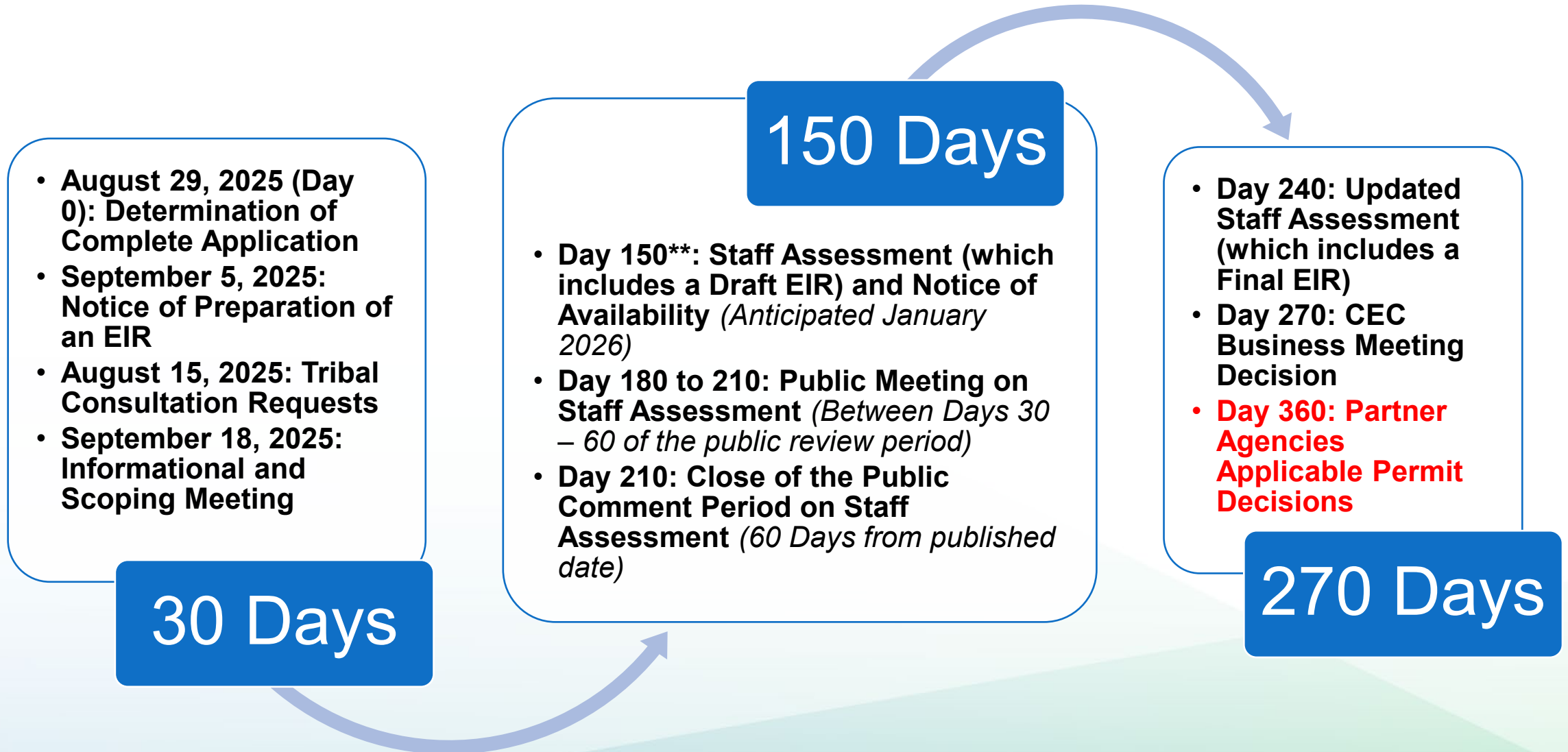
Complies with applicable laws, ordinances, regulations, and standards\*

Significant effects of the project will be avoided or substantially lessened

*\* If SB 254 is signed by the Governor, these required findings will change.*



# 270 Day Process Milestones



<sup>\*\*</sup>These Deadlines are subject to any substantial changes made to the project or certain other events occurring after an application is deemed complete.



# Compliance Monitoring and Enforcement



If a proposed project is certified by the CEC, then during the operational life of the facility, CEC staff will:

- Verify compliance with license
- Perform formal site inspections
- Require monthly and annual compliance reports
- Review monthly and annual compliance reports
- Investigate complaints
- Conduct unannounced inspections



# CEC Opt-In Webpage

The screenshot shows the California Energy Commission website. The header includes the CEC logo, navigation links (About, Careers, Contact, Events, Newsroom, Resources, Translate, Settings), and a search bar. The main navigation menu has links for HOME, PROCEEDINGS, RULES AND REGULATIONS, PROGRAMS AND TOPICS, FUNDING, and DATA AND REPORTS. The breadcrumb trail reads: California Energy Commission > Programs and Topics > All Topics > Power Plants > Opt-In Certification Program. The main heading is 'Opt-In Certification Program'. Below it, a paragraph states: 'Permitting is crucial to deploy renewable energy power plants, which are essential to meet the state's climate goals. With half a century of permitting experience under the California Environmental Quality Act, Assembly Bill 205 (2022) has broadened the California Energy Commission's (CEC) authority. This expansion allows the CEC to oversee the permitting of clean and renewable energy facilities, including solar photovoltaic, onshore wind, and energy storage systems, and facilities that produce or assemble clean energy technologies or their components. Known as the Opt-In Certification Program, this permitting process offers developers an optional pathway to submit project applications, facilitating faster deployment of renewable technologies.' To the right, a green box titled 'POWER PLANTS' contains links: 'Alphabetical Power Plant Listing', 'Power Plant Compliance and Siting', 'Licensing and Compliance Fees for Facilities', and 'Opt-In Certification Program'.

**Opt-In Certification Program**

Permitting is crucial to deploy renewable energy power plants, which are essential to meet the state's climate goals. With half a century of permitting experience under the California Environmental Quality Act, Assembly Bill 205 (2022) has broadened the California Energy Commission's (CEC) authority. This expansion allows the CEC to oversee the permitting of clean and renewable energy facilities, including solar photovoltaic, onshore wind, and energy storage systems, and facilities that produce or assemble clean energy technologies or their components. Known as the Opt-In Certification Program, this permitting process offers developers an optional pathway to submit project applications, facilitating faster deployment of renewable technologies.

**POWER PLANTS**

- Alphabetical Power Plant Listing
- Power Plant Compliance and Siting
- Licensing and Compliance Fees for Facilities
- Opt-In Certification Program**

**Opt-In Certification Program**  
<https://www.energy.ca.gov/programs-and-topics/topics/power-plants/opt-certification-program>

- Proposed projects under review
- Opt-In fact sheet
- Opt-In FAQ
- Opt-In process timeline





# **Applicant Presentation on the Proposed Project**



# California Energy Commission

## Public Scoping Meeting

---

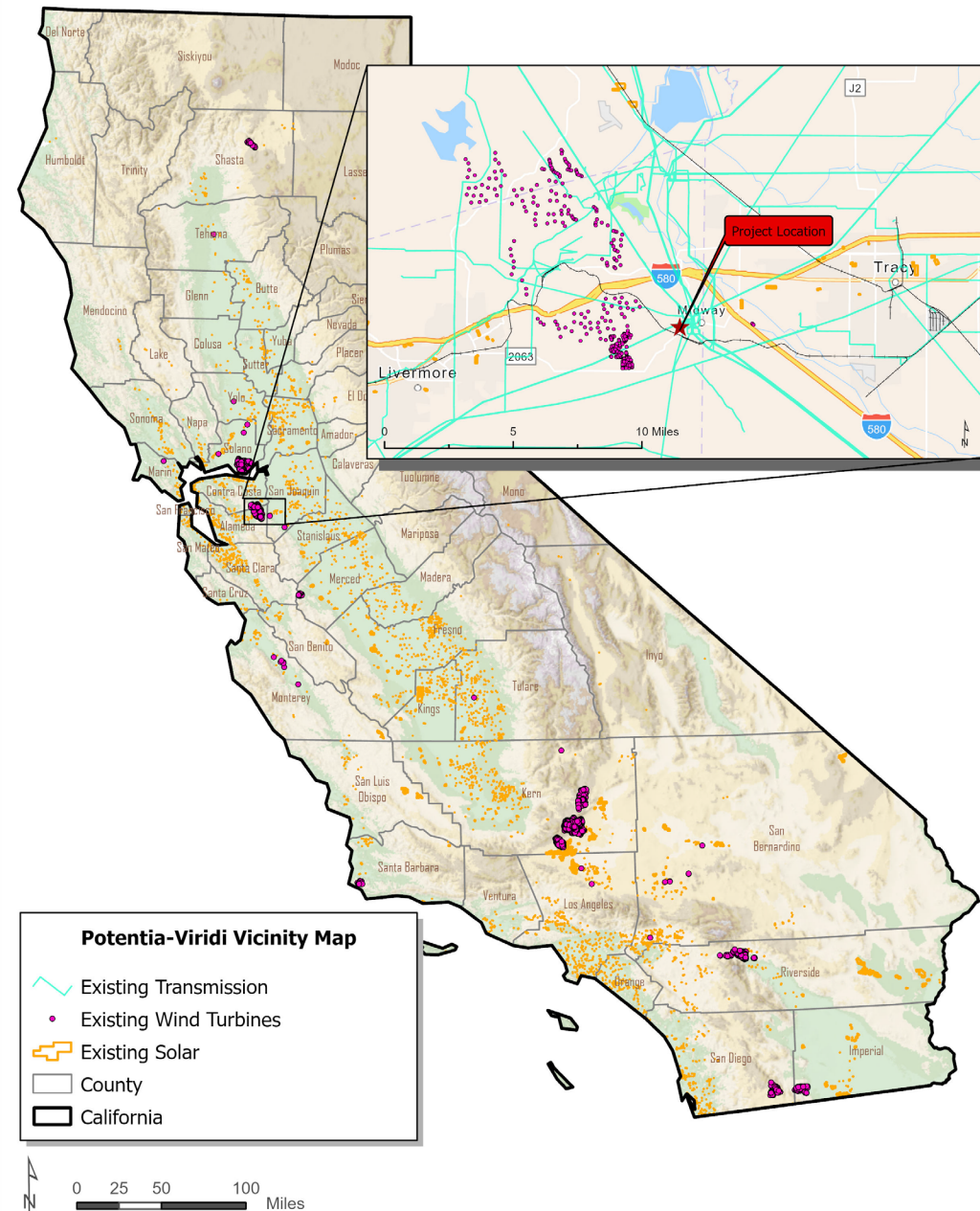
Potencia-Viridi Battery Energy Storage System Project

24-OPT-04

September 18, 2025, 2PM PDT

# Project Location

- Located in eastern part of Alameda County, ~5 miles west of Tracy
- ~2 miles southwest of I-580 / I-205 Interchange
- Adjacent to PG&E Tesla Substation
- Site access via Patterson Pass Rd.
- Up to 70-acre BESS facility lease area within ~233-acre parcel (GP: Large Parcel Agriculture)
- Other existing uses in project vicinity:
  - Electric transmission lines and substations
  - Wind turbine generators and associated infrastructure
  - Solar PV arrays and infrastructure
  - Undeveloped grazing lands
  - Transportation infrastructure: railroads, interstate highways, county and local roads
  - Industrial warehousing ~2 miles east on eastern side of I-580

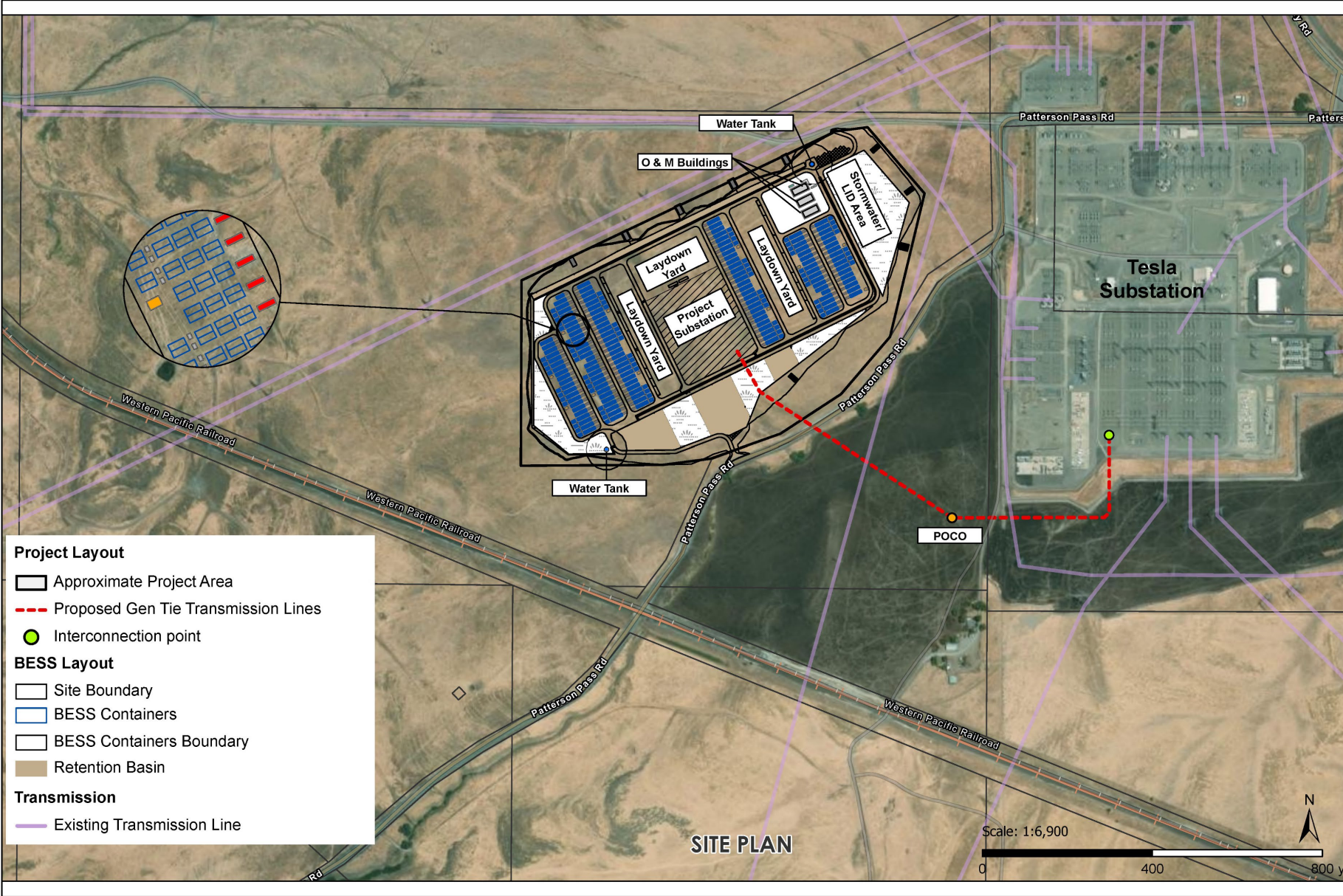


# Project Overview

- Project Components:
  - 400MW, up to 3200 MWh battery energy storage system
  - Onsite project substation
  - 500-kV gen-tie line (approx. ½ mile from project substation to the Point of Interconnection)
  - Onsite project operations & maintenance building
- Project Construction & Operations:
  - Approximately 18-month construction duration
  - Work within PG&E substation footprint / interconnection upgrades
  - Project will operate for an approx. 35-year life



## Project Site





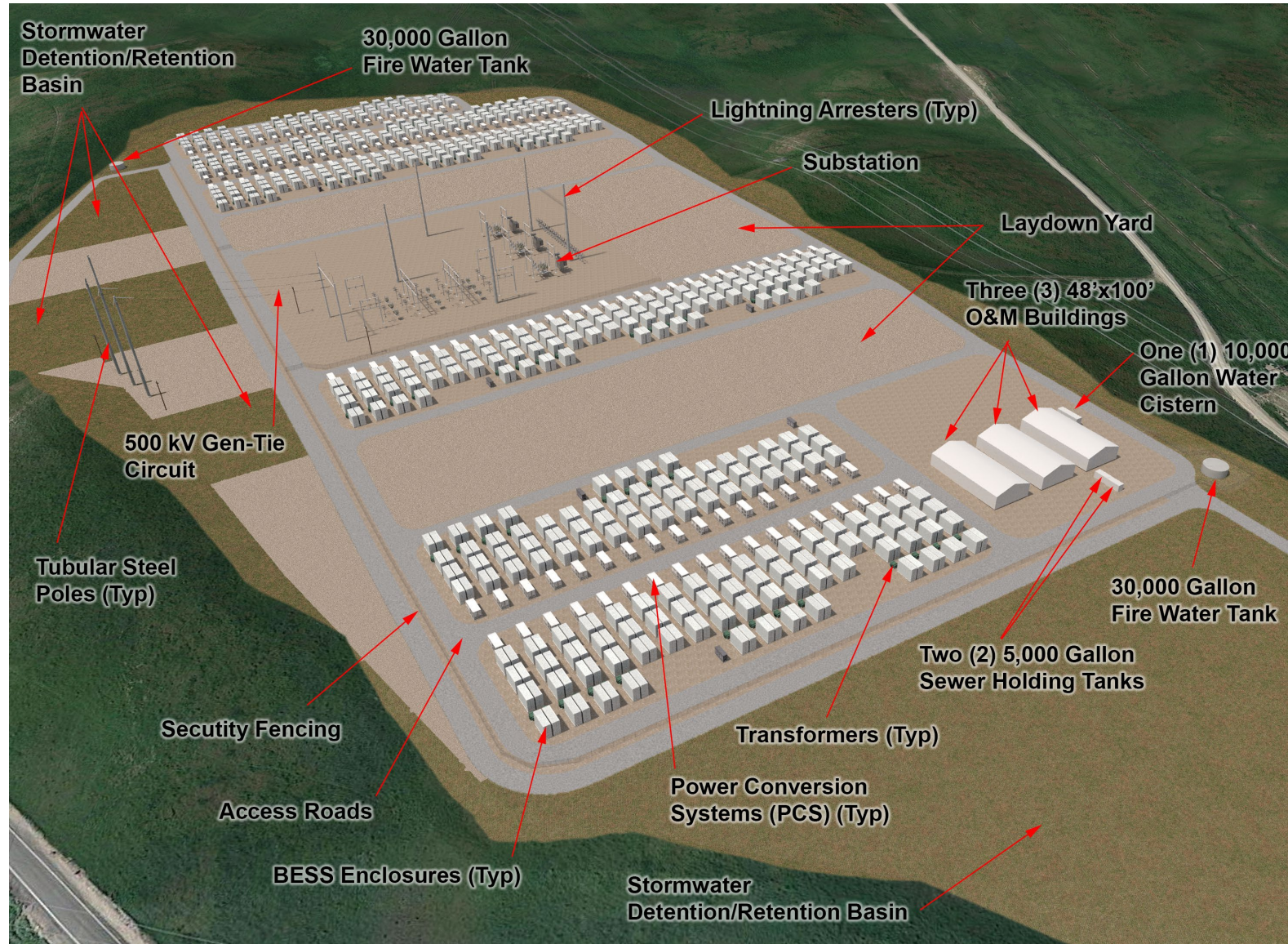
# Current Site View

- View facing southwest from Patterson Pass Road





# 3D Aerial Perspective



# Site Selection Strategy

- Adjacent to PG&E substation, allowing excess renewable generation from the grid to be stored and then discharged during times of heightened demand while minimizing environmental impacts
- Project is sited in an optimal location next to existing major electrical infrastructure while still being far removed from residential communities
- Provides electric grid enhancement benefits through a small footprint
- Multiple load centers proximate to point of interconnection (Tri-Valley and Bay Area metro, Sacramento metro, central valley communities, and proximate energy intensive land uses like industrial warehousing)



# Community Engagement

We wanted to create a Community Benefit Agreement that would align with their respective cultures while providing lasting benefits for the communities we operate within. The group decided to focus on organizations with a strong emphasis on education and community support for youth and those in need (food, mental health support, housing).

## Community Benefit Plan Structure

- Benefit agreements may be structured as an upfront cash payment, with possible additional annual payments, to ensure the programs are being supported into the future to warrant the greatest impact

## Progress

- 20+ organizations identified as potential partners
- 17 organizations were initially contacted to determine interest
- Narrowed the field and held discussions with 4 potential candidates
- We are continuing to discuss detailed terms with 2 finalist organizations (education focused, community support focused)

## Next Steps

- Final funding agreements are ready for signature

# Technical Studies Completed

- Air Quality, Greenhouse Gas, and Energy Technical Report
- Biological Resources Assessment and Aquatic Resources Delineation
- Cultural Resources and Paleontological Resources Reports
- Emergency Response Plan
- Fire Safety Plan
- Geotechnical Study
- Hazardous Materials Business Plan
- Health and Safety Plan
- Hydrology Study
- Noise Technical Report
- Phase I Environmental Site Assessment
- Socioeconomics Report
- Transportation Report
- Visual Simulations
- Water Supply Assessment
- Wildfire Study
- Worker Environmental Awareness Plan



# Unique Project Safety Considerations

Serious consideration has been given to safety based on lessons learned from projects and incidents that have occurred previously.

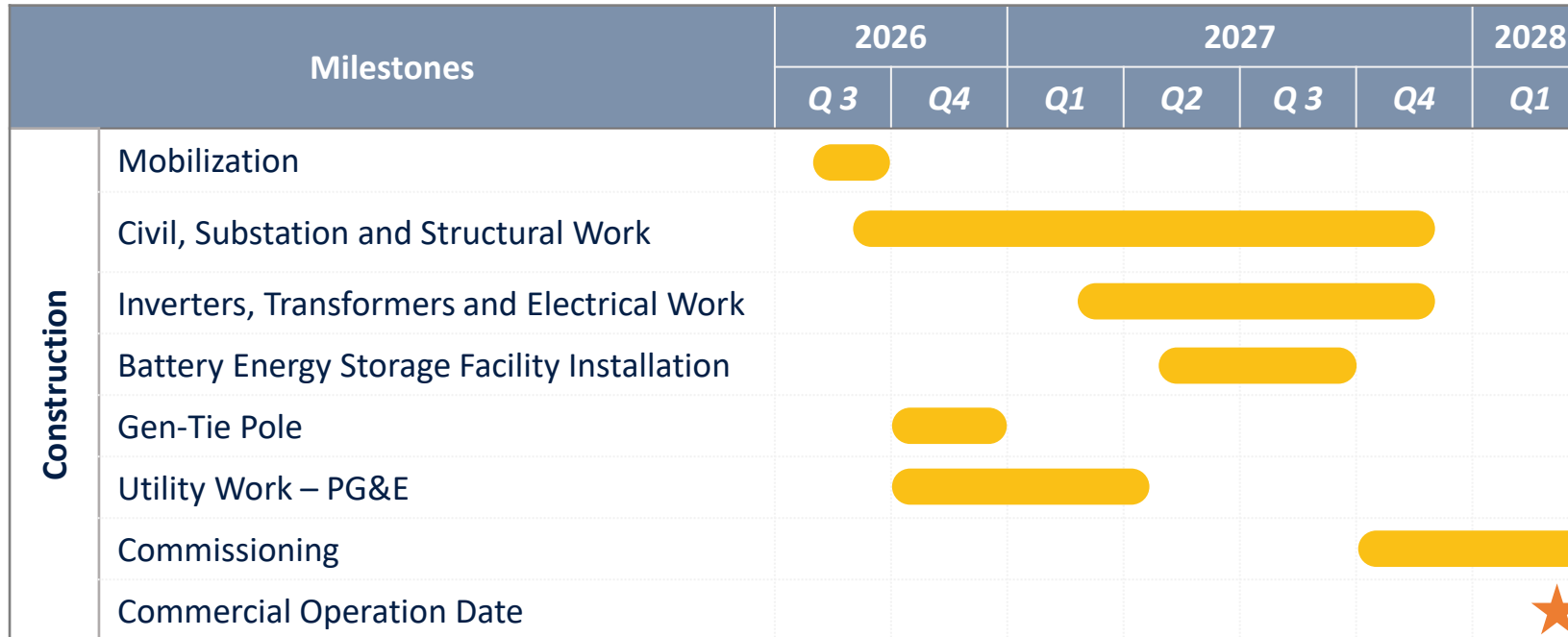
## Key Project Safety Highlights:

- Project is sited in an optimal location next to existing major electrical infrastructure far removed from residential communities
- Latest Battery Chemistry: Lithium Iron Phosphate Chemistry
- BESS units are designed to track and eliminate thermal runaway conditions
- BESS units are compartmentalized and spaced to reduce the risk of unit-to-unit fire propagation
- Battery containers are outside utilizing compartmentalized, non-walk in enclosures
- Layout complies with “Remote Outdoor Installation” definition which requires a minimum setback of 100-feet from lot lines. Current code allows for ESS equipment to be within 10-feet of lot line. Site is 10x better than Code
- Fully Compliant with: UL9540, UL9540A, NFPA 855, and CFC
- Early consultation with CalFire and local fire detachments to establish ERP’s and proper site layout
- Site has 2x the required fire-water storage, to assist in ensuring no propagation of the fire and to protect the facility from wildfires outside the project site

# Project Benefits

- Assists in meeting rising electricity demand without the need for extensive new transmission infrastructure
- Enables additional renewable generation to be added to the grid, sooner
- Assist the State in meeting its target of 60% renewable energy in CA by 2030, and 100% renewable and zero carbon energy resources to supply all retail sales of electricity in CA by 2045
- Creates local construction jobs and project labor agreements

# Construction Timeline



# Conclusion

*The Potentia-Viridi project has been designed with Public Safety front and center. Everything from the chosen location, BESS technology, emergency response planning, and operating philosophy is focused on reducing fire risk at the facility while maintaining a safe environment for the public at large. The project will provide key infrastructure support at one of the busiest substations in California (PG&E's Tesla Substation).*

*The lessons learned have been included in our design and the Original Equipment Manufacturers have made significant technological strides in the control of, monitoring of, and eliminating the weaknesses of early battery installations. We look forward to collaborating with stakeholders to answer any questions and find the optimal solution for a successful and safe project.*



# Potentia-Viridi Battery Energy Storage System

Levy Alameda, LLC

*Building a Partnership to Deliver a Carbon Free Energy Future*



*Thank You!*



# **Staff Assessment and Scope and Content of the Environmental Analysis**

**Presented by Kaycee Chang  
Supervisor, CEQA Project Management Unit**



# What is a Staff Assessment?

- Comprehensive, independent, technical and environmental review prepared by the CEC
- Includes an EIR following the requirements of the California Environmental Quality Act
- Key Staff Assessment information include:
  - Engineering Evaluation
  - Environmental Impact Assessment
  - Mandatory Opt-In Requirements
  - Environmental Justice Analysis
  - Compliance Conditions
  - Compliance Monitoring Requirements



# Staff Assessment Purpose

---

- Provide objective information regarding the project's potential effects on the environment
- Identify mitigation to reduce impacts
- Describe a range of reasonable alternatives which would feasibly attain most of the basic objectives of the project
- Assess the project's conformance with applicable local, state, and federal laws, ordinances, regulations, and standards
- Evaluate whether the application complies with additional licensing requirements
- Make a recommendation to the CEC Commissioners on whether to approve the project





# Environmental and Engineering Impact Assessment

Environmental Evaluation	Environmental Evaluation	Engineering Evaluation
Air Quality	Land Use, Agriculture, and Forestry	Facility Design
Biological Resources	Noise and Vibration	Facility Reliability
Climate Change and Greenhouse Gas Emissions	Public Health	Transmission System Engineering
Cultural and Tribal Cultural Resources	Socioeconomics	Worker Safety and Fire Protection
Efficiency and Energy Resources	Solid Waste Management	
Geology, Paleontology, and Minerals	Transmission Line Safety and Nuisance	
Hazards, Hazardous Materials/Waste, and Wildfire	Transportation	
	Visual Resources	
	Water Resources	
	Alternatives	



# Mandatory Opt-In Requirements

Requirements for Covered Project  
Under the Labor Code

Legally Binding and Enforceable  
Community Benefits Agreement(s)

Net Positive Economic Benefit  
to the Local Government\*

*\* If SB 254 is signed by the Governor, some Mandatory Opt-In requirements will change.*



# Preliminary Evaluation – Probable Environmental Effects

- Air Quality
- Biological Resources
- Cultural and Tribal Cultural Resources
- Geology, Paleontology, and Minerals
- Hazards, Hazardous Materials and Wildfire
- Land Use
- Noise and Vibration
- Public Health
- Socioeconomics
- Solid Waste
- Transportation
- Visual Resources
- Water Resources
- Worker Safety and Fire Protection



# Biological Resources

## Probable Environmental Effects

### Direct and Indirect Effects to Special Status Wildlife

- California tiger salamander (*Ambystoma californiense*) - State and Federal Threatened
- Western Burrowing owl (*Athene cunicularia hypugaea*) - *State Candidate for Listing*
- California red-legged frog (*Rana draytonii*) - Federal Threatened
- San Joaquin kit fox (*Vulpes macrotis mutica*) - State Threatened and Federal Endangered
- Crotch's bumble bee (*Bombus crotchii*) - State Candidate for Listing





# Biological Resources

## Probable Environmental Effects

- Disruption of nesting for common and special-status bird species
- Loss of habitat for common and special-status species
- Adverse effect on an ephemeral stream under state and federal jurisdiction - Patterson Run Creek
- Operational effects to burrowing owls, migratory birds, and other sensitive wildlife



# Cultural and Tribal Cultural Resources

## Probable Environmental Effects

- Records checks and surveys complete
- One cultural resource
  - Tesla Substation (recommended ineligible)
- Native American consultation is ongoing
- Will adopt protocols for unanticipated discoveries



# Visual Resources

## Probable Environmental Effects

- Substantial visual change to existing landscape.
- Degradation of existing visual character or quality of public views of site and surroundings from Patterson Pass Road.
- Introduction of additional sources of daytime glare and night lighting.
- Inconsistencies with local regulations, standards, and policies pertaining to protection and management of existing landscapes and scenic resources.



# ***Water Resources***

## **Probable Environmental Effects**

### **Stormwater Outfall to Waters of the U.S.**

CEC staff will evaluate whether the stormwater outfall to Patterson Run complies with Clean Water Act:

- Two of the detention basins would flow from an outlet riser into a storm drain that would outfall to Patterson Run.
- Approximately 846 feet of Patterson Run along the southeast boundary of the project was identified as potential waters of the United States.





# Worker Safety/Fire Protection

## Probable Environmental Effects

- CEC will review the history of battery energy storage system (BESS) fires and evolving strategies for BESS safety
- Applicant is proposing BESS in containers using lithium iron phosphate batteries
- Transportation impacts of BESS container movements will be analyzed



# Staff Assessment / Next Steps

CEC prepares Staff Assessment which includes a Draft EIR

CEC publishes Staff Assessment in 150 days (with certain exceptions)



CEC publishes Staff Assessment

60-day public review period

Public meeting for the Staff Assessment



CEC prepares Updated Staff Assessment after public review period closes

CEC publishes Updated Staff Assessment



**Decision at noticed CEC Business Meeting**



# **Office of the Public Advisor, Energy Equity, and Tribal Affairs**



# Office of the Public Advisor, Energy Equity and Tribal Affairs

Advise and support the CEC, stakeholders, California Native American tribes, and interested members of the public in meaningful engagement and participation in CEC programs, policies, and energy equity efforts.







# Multiple Ways to Participate

1. Follow
2. Comment
3. Tribal Consultation





# Follow Via Web, Email, and Events

## Potentia-Viridi Battery Energy Storage System

### PROJECT OWNER

Levy Alameda, LLC

### DOCKET NUMBER

24-OPT-04

### CAPACITY

400 megawatts, 3,200 megawatt-hours

### LOCATION

Alameda County

### TECHNOLOGY

Battery Storage System

### PROJECT STATUS

Under Review

### PROJECT TYPE

Opt-In

### ORIGINAL PROCEEDING


[Submit e-Comment](#) 

[Submit e-Filing](#) 

[Docket Log \(24-OPT-04\)](#) 

[Exhibit List](#) 

[Proof of Service List](#) 

[Search All Power Plant Documents](#) 

- Proposed project and event information
- Comment
- Sign up for email updates
- Link for project docket
- More

<https://www.energy.ca.gov/powerplant/battery-storage-system/potentia-viridi-battery-energy-storage-system>



# Proposed Project Docket

## Docket Log

Docket: 24-OPT-04

Project Title: Potentia-Viridi Battery Energy Storage System

Generated On: 9/5/2025 2:40:24 PM

Include: ☒ Documents ☒ Comments ☒ Transcripts

↓ TN #	Docketed Date	Document Title	Exhibit #	To	From
265853	9/2/2025	<a href="#">Notice of Preparation Draft Environmental Impact Report</a> Supersedes TN 265840 Alternatives 16 page(s)		CEC Docket Unit	California Energy Commission
265840	9/2/2025	<a href="#">Notice of Preparation Draft Environmental Impact Report</a> Potentia-Viridi Battery Energy Storage Project (24-OPT-04) Alternatives 16 page(s)		CEC/Docket Unit	California Energy Commission
265819	8/29/2025	<a href="#">Determination of Complete Application for Potentia-Viridi Battery Energy Storage System</a> 2 page(s)		CEC/Docket Unit	California Energy Commission
265753	8/5/2025	<a href="#">CEC Data Request – Air Quality and Public Health Follow-Up Response August 2025 - Public</a> On July 17, 2025, Levy Alameda, LLC (Applicant) received an email from the California Energy Commission (CEC) for the Potentia-Viridi Battery Energy Storage Project (Project; Docket Number 24-OPT-04 requesting additional information related to air quality and public health. This document responds to the CEC's request and provides further clarification		CEC/Docket Unit	Dudek

Visit Docket 24-OPT-04 for free 24/7 access to project documents

<https://efiling.energy.ca.gov/Lists/DocketLog.aspx?docketnumber=24-OPT-04>



# Verbal and Written Comments



The screenshot shows the 'Add Comment' page on the California Energy Commission website. The header includes the CA.GOV logo, the California Energy Commission logo, and navigation links: CA.gov, Contact Us, Accessibility, Quick Links, Home, About Us, Analysis & Stats, Efficiency, Funding, Power Plants, Renewables, Research, and Transportation. The main heading is 'Add Comment'. Below it, a note states: 'Fields denoted by an asterisk (\*) are required.' There is a dropdown menu labeled 'Select a Proceeding \*' and a search input field with the placeholder text 'Enter a project title, docket #, or county'. A search button with a magnifying glass icon is next to the input field, followed by a link 'or View All Projects'. A blue message box states: 'You will need to select a proceeding before continuing'. At the bottom, a note provides contact information: 'For any questions regarding e-commenting, please send an e-mail to [e-CommentingHelp@energy.ca.gov](mailto:e-CommentingHelp@energy.ca.gov) or call 800-822-6228 or 916-654-4489.' The footer contains links for Accessibility, Conditions of Use, and Privacy Policy, along with the copyright notice 'Copyright © 2016 State of California'.

<https://www.energy.ca.gov/events>

<https://efiling.energy.ca.gov/EComment/ECommentSelectProceeding.aspx>



# Tribal Consultation

---

The CEC invites consultation in this and other opt-in proceedings with California Native American tribes.

Contact: Gabriel Roark, Assistant Tribal Liaison  
[Gabriel.Roark@energy.ca.gov](mailto:Gabriel.Roark@energy.ca.gov) (916) 237-2544





# Thank You

## Email

publicadvisor@energy.ca.gov

## Phone

(916) 269-9595

## Online

<https://www.energy.ca.gov/about/divisions-and-offices/office-public-advisor>



# **Government Comment**

**California Native American tribes**

**Government Agencies**

**Elected Officials**



# Public Comment



# Public Comment

## Instruction

- 2 minutes or less per person
- 1 representative per organization

## Zoom App/Online

- Click “raise hand”

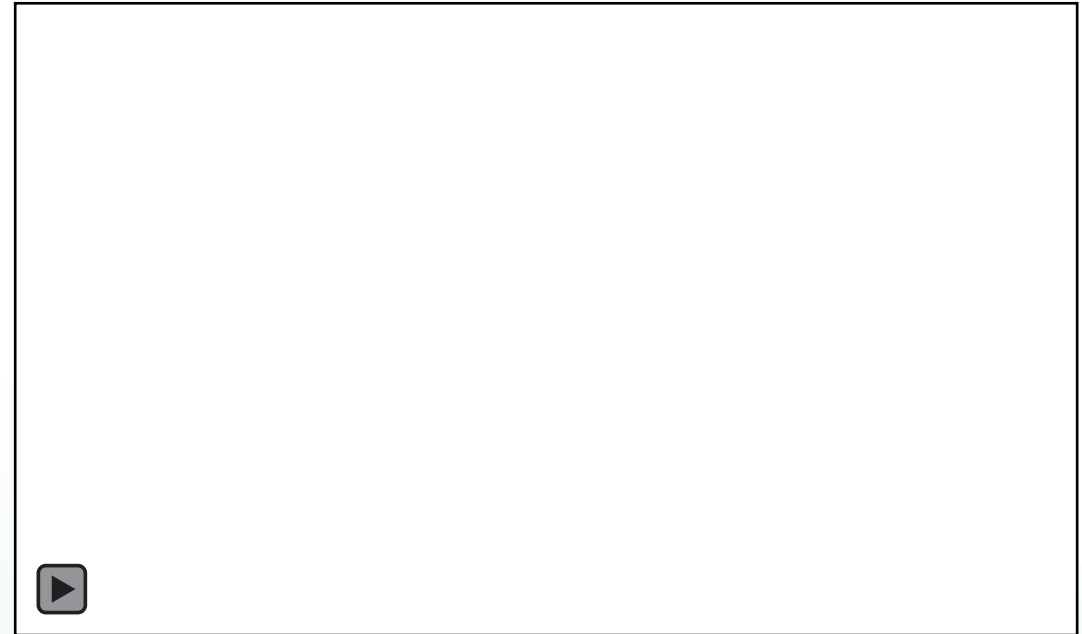
## Telephone

- Press \*9 to raise hand
- Press \*6 to mute and unmute

## When called upon

- CEC staff will open your line
- Unmute, spell name and state affiliation, if any

## 2-MINUTE TIMER



Timer

# **BREAK**

**Please return at**

## **AGENDA**

- **Welcome**
- **CEC Staff Presentation**
- **Applicant Presentation**
- **CEC Staff Presentation**
- **Lunch Break**
- **CEC Presentation**
  - Public participation and California Native American tribal consultation opportunities
- **Government Comments**
  - California Native American tribes
  - Government Agencies
  - Elected Officials
- **Break**
- **Public Comment**
- **Next Steps**
- **Closing Comments**
- **Adjourn**





# Comments Due

**October 3, 2025**, on the Notice of Preparation and Scope and Content of the EIR

## Methods to Submit

1. Submit e-comments to project's docket, accessible at:  
<https://efiling.energy.ca.gov/Ecomment/Ecomment.aspx?docketnumber=24-OPT-04>
2. Email comments to: [docket@energy.ca.gov](mailto:docket@energy.ca.gov)\*  
*\*Please include "24-OPT-04 and Potentia-Viridi Battery Energy Storage System NOP Comments" in subject line*
3. Send via U.S. mail, public comments postmarked by October 3, 2025 to:  
Re: Potentia-Viridi Battery Energy Storage System  
California Energy Commission  
715 P Street, MS 40  
Sacramento, CA 95814

## Docket Log

Docket: 24-OPT-04

Project Title: Potentia-Viridi Battery Energy Storage System

Generated On: 9/5/2025 3:26:18 PM

include: ☒ Documents ☒ Comments ☒ Transcripts

↓ TN #	Docketed Date	Document Title	E> #
265853	9/2/2025	Notice of Preparation Draft Environmental Impact Report Supersedes TN 265840 Alternatives 16 page(s)	
265840	9/2/2025	Notice of Preparation Draft Environmental Impact Report	



# Next Steps

Activity	Timeframe
Close Public Comment Period on the Notice of Preparation	October 3, 2025
Close State Agency Comment Period on the Notice of Preparation	October 6, 2025
Publish Staff Assessment**	January 2026

\*\*This deadline is subject to any substantial changes made to the proposed project or certain other events occurring after an application is deemed complete.



# **Thank You!**

**Siting, Transmission, and Environmental Protection Division**

**[STEPSiting@energy.ca.gov](mailto:STEPSiting@energy.ca.gov)**