

<b>DOCKETED</b>	
<b>Docket Number:</b>	21-AFC-02
<b>Project Title:</b>	Willow Rock Energy Storage Center
<b>TN #:</b>	265103
<b>Document Title:</b>	Willow Rock Data Request Set 2 Response, Attachment DR35-1_Part 3
<b>Description:</b>	Resubmission of files previously submitted through Kiteworks
<b>Filer:</b>	Kathryn Stevens
<b>Organization:</b>	WSP USA Inc.
<b>Submitter Role:</b>	Applicant Consultant
<b>Submission Date:</b>	7/29/2025 5:00:47 PM
<b>Docketed Date:</b>	7/30/2025



PATH: G:\Hydrostor\Aerial\09\_PROJECTS\US0029687\_4225\_GEM\_A-CAES\_DISCOVERY\110\_DATA\_ADEQUACY\02\_PRODUCTION\A\02\_FIGURES\CEC\_Data\Request\_210305\Hydrostor\_FigGen\_CEC\_DR.aprx PRINTED: 9/13/2024 at 2:55 PM BY: USMK02001



LEGEND

Project Components

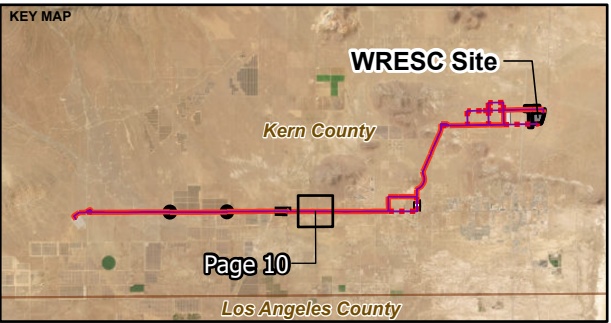
- Proposed Location of Transmission Line Pole
- Preferred Route, Aboveground
- Preferred Route, Underground
- Route Options 1-6, Aboveground
- Route Options 1-6, Underground

Project Areas

- WRESC Site
- P1
- P1 - No Right of Entry
- P2 North
- P2 South
- Villa Haines
- Project ROW

DRAFT

	Preferred Route Length (miles)	Percent of Total Preferred Route
Aboveground	19.32	97.53%
Underground	0.49	2.47%
Total (miles)	19.81	



NOTE(S)

1. PROJECT ROW IS 62.5 FT ON EITHER SIDE OF THE PROPOSED TRANSMISSION LINE ROUTE

REFERENCE(S)

1. PROPOSED TRANSMISSION LINE, PROPOSED T-LINE POLE, HYDROSTOR 2024
2. COORDINATE SYSTEM: NAD 1983 STATEPLANE CALIFORNIA V FIPS 0405 FEET
3. MAP SERVICE LAYER CREDITS: WORLD IMAGERY: EARTHSTAR GEOGRAPHICS  
WORLD IMAGERY: MAXAR

CLIENT

GEM A-CAES LLC

PROJECT

WILLOW ROCK ENERGY STORAGE CENTER  
CEC DATA REVISIONS

TITLE

ABOVE/BELOWGROUND GEN-TIE LINE AND PROPOSED  
TRANSMISSION LINE POLE LOCATIONS

CONSULTANT



YYYY-MM-DD	2024-09-13
DESIGNED	MK
PREPARED	MK
REVIEWED	NN
APPROVED	JP

PROJECT NO.  
US0029687.4225

PHASE  
100

REV.  
A

FIGURE  
DR35-10

IF THIS MEASUREMENT DOES NOT MATCH WHAT IS SHOWN, THE SHEET SIZE HAS BEEN MODIFIED FROM: ANSI B



PATH: G:\Hydrostor\Ansel\09\_PROJECT\US0029687\_4225\_GEM\_A-CAES\_DISCOVERY\110\_DATA\_ADEQUACY\02\_PRODUCTION\A\02\_FIGURES\CEC\_Data\Request\_210\PSB\Hydrostor\_FigGen\_CEC\_DR.apr PRINTED: 9/13/2024 at 2:55 PM BY: USMK02001



**LEGEND**  
**Project Components**

- Proposed Location of Transmission Line Pole
- Preferred Route, Aboveground
- Preferred Route, Underground
- Route Options 1-6, Aboveground
- Route Options 1-6, Underground

**Project Areas**

- WRESC Site
- P1
- P1 - No Right of Entry
- P2 North
- P2 South
- Villa Haines
- Project ROW

**DRAFT**

	Preferred Route Length (miles)	Percent of Total Preferred Route
Aboveground	19.32	97.53%
Underground	0.49	2.47%
Total (miles)	19.81	

**KEY MAP**

0 500 1,000  
1" = 500 ft FEET

**NOTE(S)**

1. PROJECT ROW IS 62.5 FT ON EITHER SIDE OF THE PROPOSED TRANSMISSION LINE ROUTE

**REFERENCE(S)**

1. PROPOSED TRANSMISSION LINE, PROPOSED T-LINE POLE, HYDROSTOR 2024  
2. COORDINATE SYSTEM: NAD 1983 STATEPLANE CALIFORNIA V FIPS 0405 FEET  
3. MAP SERVICE LAYER CREDITS: WORLD IMAGERY: EARTHSTAR GEOGRAPHICS  
WORLD IMAGERY: MAXAR

**CLIENT**

GEM A-CAES LLC

**PROJECT**

WILLOW ROCK ENERGY STORAGE CENTER  
CEC DATA REVISIONS

**TITLE**

**ABOVE/BELOWGROUND GEN-TIE LINE AND PROPOSED TRANSMISSION LINE POLE LOCATIONS**

	CONSULTANT	YYYY-MM-DD	2024-09-13
	DESIGNED	MK	
	PREPARED	MK	
	REVIEWED	NN	
	APPROVED	JP	

PROJECT NO.	PHASE	REV.	FIGURE
US0029687.4225	100	A	DR35-11

IF THIS MEASUREMENT DOES NOT MATCH WHAT IS SHOWN, THE SHEET SIZE HAS BEEN MODIFIED FROM: ANSI B 11



PATH: G:\Hydrostor\Annel109\_PROJECT\B05029687\_4225\_GEM\_A-CAES\_DISCOVERY\100\_DATA\_ADEQUACY\02\_PRODUCTION\A\02\_FIGURES\CEC\_Data\Request\_210305\Hydrostor\_FigGen\_CEC\_DR.apr PRINTED: 9/13/2024 at 2:55 PM BY: USMK02001



LEGEND

Project Components

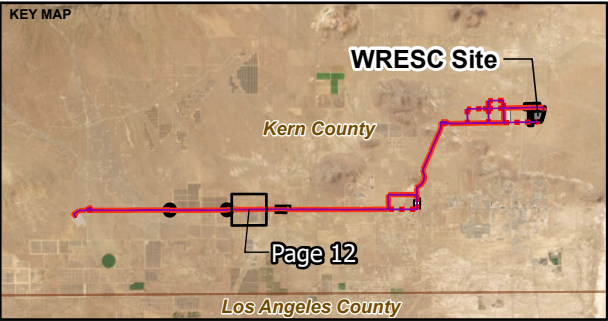
- Proposed Location of Transmission Line Pole
- Preferred Route, Aboveground
- Preferred Route, Underground
- Route Options 1-6, Aboveground
- Route Options 1-6, Underground

Project Areas

- WRESC Site
- P1
- P1 - No Right of Entry
- P2 North
- P2 South
- Villa Haines
- Project ROW

DRAFT

	Preferred Route Length (miles)	Percent of Total Preferred Route
Aboveground	19.32	97.53%
Underground	0.49	2.47%
Total (miles)	19.81	



NOTE(S)  
1. PROJECT ROW IS 62.5 FT ON EITHER SIDE OF THE PROPOSED TRANSMISSION LINE ROUTE

REFERENCE(S)  
1. PROPOSED TRANSMISSION LINE, PROPOSED T-LINE POLE, HYDROSTOR 2024  
2. COORDINATE SYSTEM: NAD 1983 STATEPLANE CALIFORNIA V FIPS 0405 FEET  
3. MAP SERVICE LAYER CREDITS: WORLD IMAGERY: EARTHSTAR GEOGRAPHICS  
WORLD IMAGERY: MAXAR

CLIENT  
GEM A-CAES LLC

PROJECT  
WILLOW ROCK ENERGY STORAGE CENTER  
CEC DATA REVISIONS

TITLE  
ABOVE/BELOWGROUND GEN-TIE LINE AND PROPOSED  
TRANSMISSION LINE POLE LOCATIONS

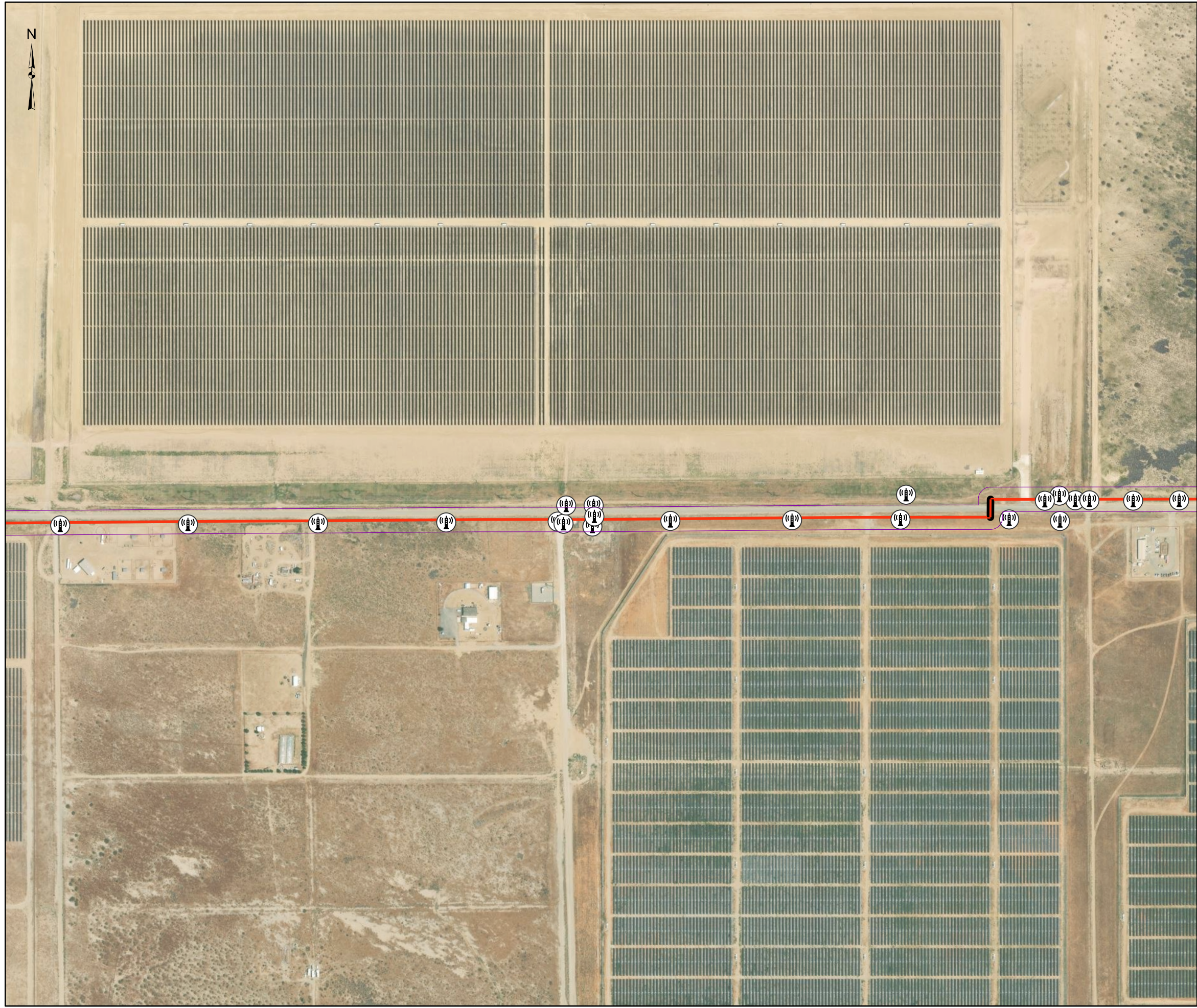
	CONSULTANT	YYYY-MM-DD	2024-09-13
	DESIGNED	MK	
	PREPARED	MK	
	REVIEWED	NN	
	APPROVED	JP	

PROJECT NO.	PHASE	REV.	FIGURE
US0029687.4225	100	A	DR35-12

IF THIS MEASUREMENT DOES NOT MATCH WHAT IS SHOWN, THE SHEET SIZE HAS BEEN MODIFIED FROM: ANSI B 1



PATH: G:\Hydrostor\Annel\09\_PROJECTS\US0029687\_4225\_GEM\_A-CAES\_DISCOVERY\110\_DATA\_ADEQUACY\02\_PRODUCTION\A\A\FIGURES\CEC\_Data\Request\_210305\Hydrostor\_FigGen\_CEC\_DR.aprx PRINTED: 9/13/2024 at 2:55 PM BY: USMK02001



LEGEND

Project Components

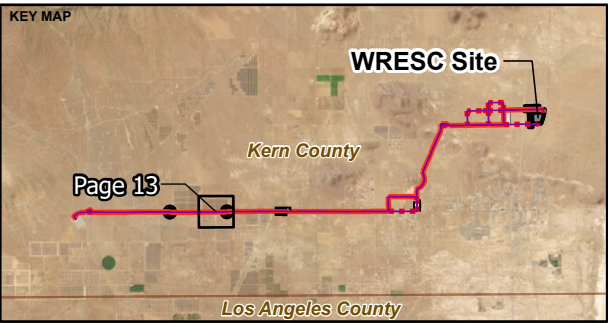
- Proposed Location of Transmission Line Pole
- Preferred Route, Aboveground
- Preferred Route, Underground
- Route Options 1-6, Aboveground
- Route Options 1-6, Underground

Project Areas

- WRESC Site
- P1
- P1 - No Right of Entry
- P2 North
- P2 South
- Villa Haines
- Project ROW

DRAFT

	Preferred Route Length (miles)	Percent of Total Preferred Route
Aboveground	19.32	97.53%
Underground	0.49	2.47%
Total (miles)	19.81	



NOTE(S)

- PROJECT ROW IS 62.5 FT ON EITHER SIDE OF THE PROPOSED TRANSMISSION LINE ROUTE

REFERENCE(S)

- PROPOSED TRANSMISSION LINE, PROPOSED T-LINE POLE, HYDROSTOR 2024
- COORDINATE SYSTEM: NAD 1983 STATEPLANE CALIFORNIA V FIPS 0405 FEET
- MAP SERVICE LAYER CREDITS: WORLD IMAGERY: EARTHSTAR GEOGRAPHICS  
WORLD IMAGERY: MAXAR

CLIENT

GEM A-CAES LLC

PROJECT

WILLOW ROCK ENERGY STORAGE CENTER  
CEC DATA REVISIONS

TITLE

ABOVE/BELOWGROUND GEN-TIE LINE AND PROPOSED  
TRANSMISSION LINE POLE LOCATIONS

CONSULTANT



YYYY-MM-DD	2024-09-13
DESIGNED	MK
PREPARED	MK
REVIEWED	NN
APPROVED	JP

PROJECT NO.  
US0029687.4225

PHASE  
100

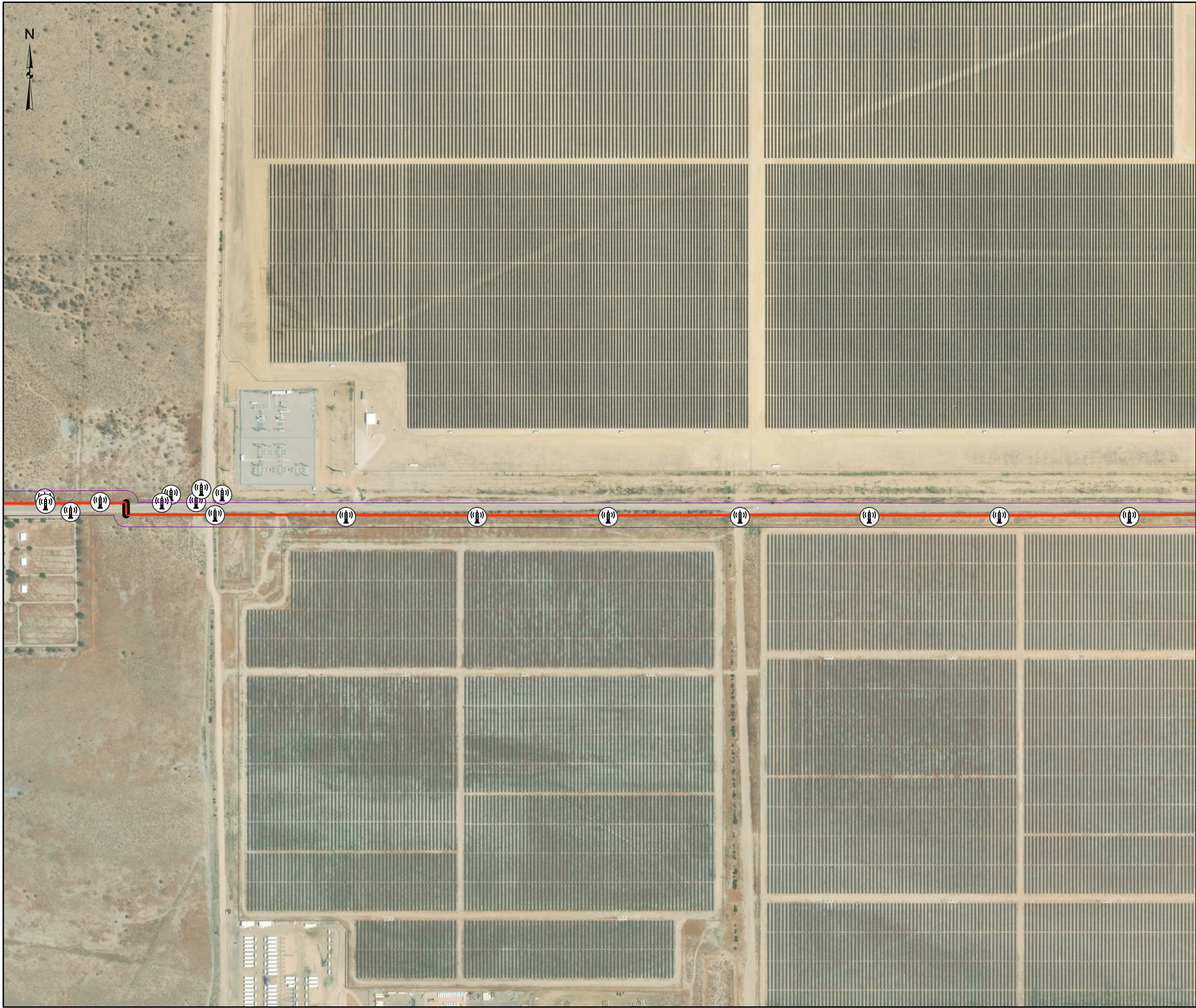
REV.  
A

FIGURE  
DR35-13

IF THIS MEASUREMENT DOES NOT MATCH WHAT IS SHOWN, THE SHEET SIZE HAS BEEN MODIFIED FROM: ANSI B



PATH: G:\Hydrostor\Ansel\09\_PROJECTS\US0029687\_4225\_GEM\_A-CAES\_DISCOVERY\110\_DATA\_ADEQUACY\02\_PRODUCTION\A\02\_FIGURES\CEC\_Data\Request\_210358\Hydrostor\_FigGen\_CEC\_DR.apr PRINTED: 9/13/2024 at 2:58 PM BY: USMK02001



LEGEND

Project Components

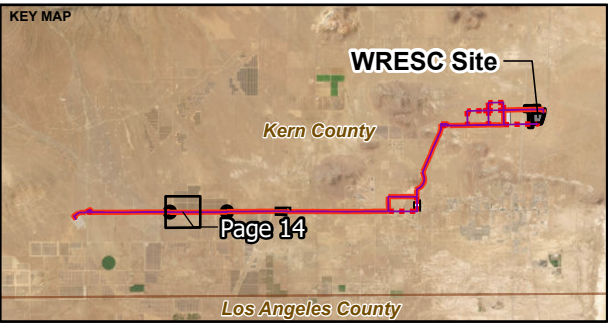
- Proposed Location of Transmission Line Pole
- Preferred Route, Aboveground
- Preferred Route, Underground
- Route Options 1-6, Aboveground
- Route Options 1-6, Underground

Project Areas

- WRESC Site
- P1
- P1 - No Right of Entry
- P2 North
- P2 South
- Villa Haines
- Project ROW

DRAFT

	Preferred Route Length (miles)	Percent of Total Preferred Route
Aboveground	19.32	97.53%
Underground	0.49	2.47%
Total (miles)	19.81	



NOTE(S)

- PROJECT ROW IS 62.5 FT ON EITHER SIDE OF THE PROPOSED TRANSMISSION LINE ROUTE

REFERENCE(S)

- PROPOSED TRANSMISSION LINE, PROPOSED T-LINE POLE, HYDROSTOR 2024
- COORDINATE SYSTEM: NAD 1983 STATEPLANE CALIFORNIA V FIPS 0405 FEET
- MAP SERVICE LAYER CREDITS: WORLD IMAGERY: EARTHSTAR GEOGRAPHICS  
WORLD IMAGERY: MAXAR

CLIENT

GEM A-CAES LLC

PROJECT

WILLOW ROCK ENERGY STORAGE CENTER  
CEC DATA REVISIONS

TITLE

ABOVE/BELOWGROUND GEN-TIE LINE AND PROPOSED  
TRANSMISSION LINE POLE LOCATIONS

CONSULTANT



YYYY-MM-DD	2024-09-13
DESIGNED	MK
PREPARED	MK
REVIEWED	NN
APPROVED	JP

PROJECT NO.  
US0029687.4225

PHASE  
100

REV.  
A

FIGURE  
DR35-14

IF THIS MEASUREMENT DOES NOT MATCH WHAT IS SHOWN, THE SHEET SIZE HAS BEEN MODIFIED FROM: ANSI B

1 in