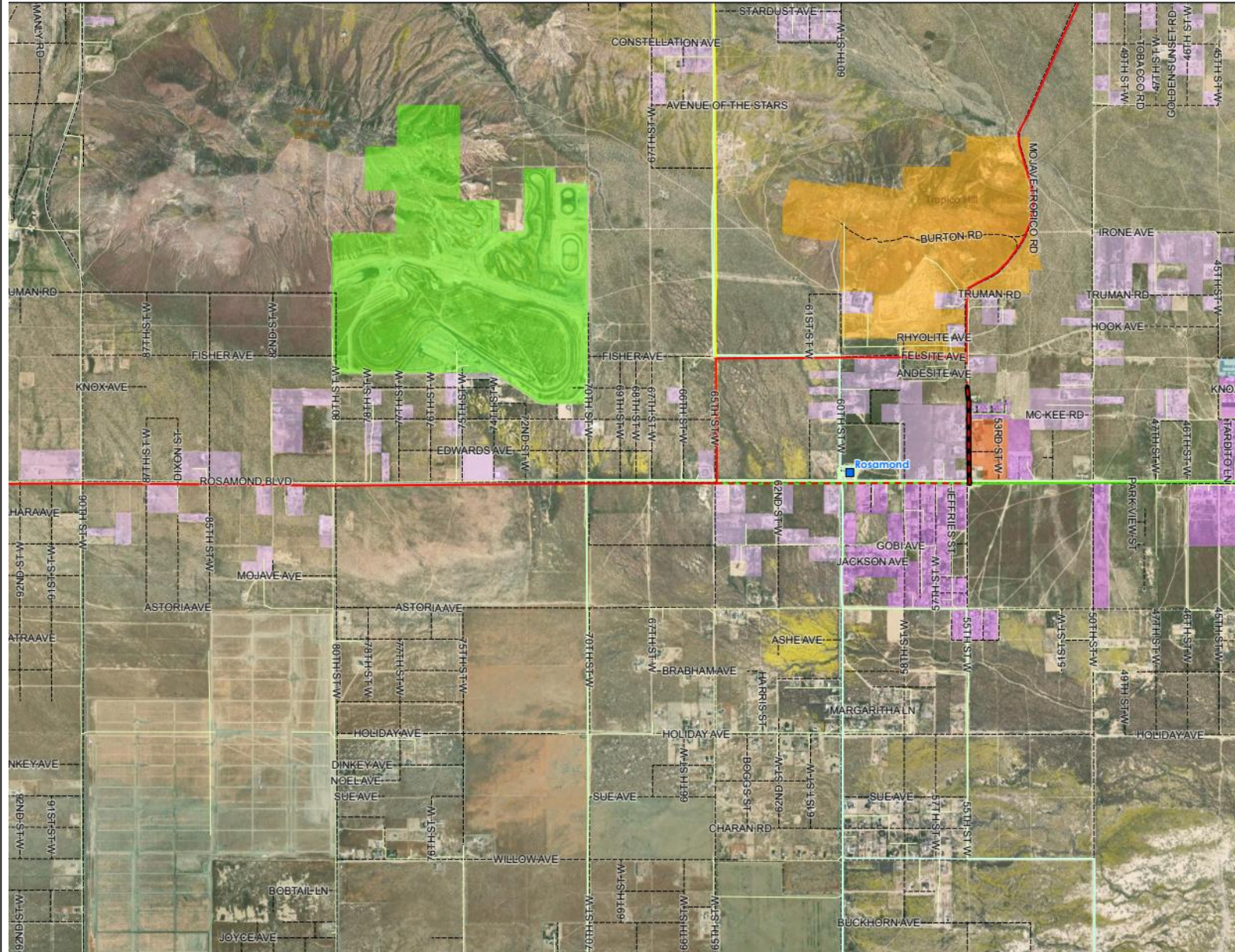


DOCKETED	
Docket Number:	21-AFC-02
Project Title:	Willow Rock Energy Storage Center
TN #:	265067
Document Title:	Willow Rock Data Adequacy Response, Attachment PD-3
Description:	Resubmission of files previously submitted through Kiteworks
Filer:	Kathryn Stevens
Organization:	WSP USA Inc.
Submitter Role:	Applicant Consultant
Submission Date:	7/29/2025 2:21:08 PM
Docketed Date:	7/29/2025

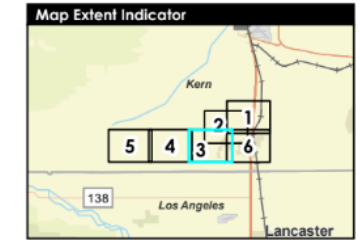
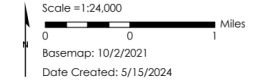
\\P014\GIS\Hydro\Avalanche\6_00_AltRoutes\6_00_AltRoutes\Map\6_00_AltRoutes\TLine 246 Route Map_5_15_24_Templates.aprx PRINTED: 5/20/2024 at 4:15 PM BY: KShenae
PROJECT: 31406639.003 PRODUCTION: 31406639.003 HYDRO: 31406639.003



- Project Boundary
- WREC Site
- Other Project Parcel
- Preferred Route Primary
- Aboveground
- Underground
- Preferred Route Options
- Aboveground
- Underground
- Alternative Routes
- Alternative A
- Alternative B
- Alternative C
- Existing Transmission

- Existing Substations
- Existing Transmission Lines (CEC 2023)
- Existing Subtransmission Lines (SCE 2023)
- Existing Primary Distribution Lines (SCE 2023)

- General Land Use Classifications
- Residential (Low-Moderate Density)
- Residential (Moderate-High Density)
- School
- Airport
- Gold Mine
- Race Park
- Solar Development
- Adjacent Wind Turbines
- Mountain Peak



REFERENCE(S)
1. PREFERRED AND ALTERNATIVE ROUTES - PANORAMA, 2023
2. COORDINATE SYSTEM: NAD 1983 STATEPLANE CALIFORNIA V FIPS 0405 FEET
3. MAP SERVICE LAYER CREDITS: SOURCES: ESRI, HERE, GARMIN, INTERMAP, INCREMENT P, SORP, GEBCO, USGS, FAO, NPS, NRCAN, GEOBASE, IGN, KADASTER NL, ORDNANCE SURVEY, ESRI JAPAN, METI, EASRI CHINA (HONG KONG), (C) OPENSTREET MAP CONTRIBUTORS, AND THE GIS USER COMMUNITY

CLIENT
GEM A-CAES LLC

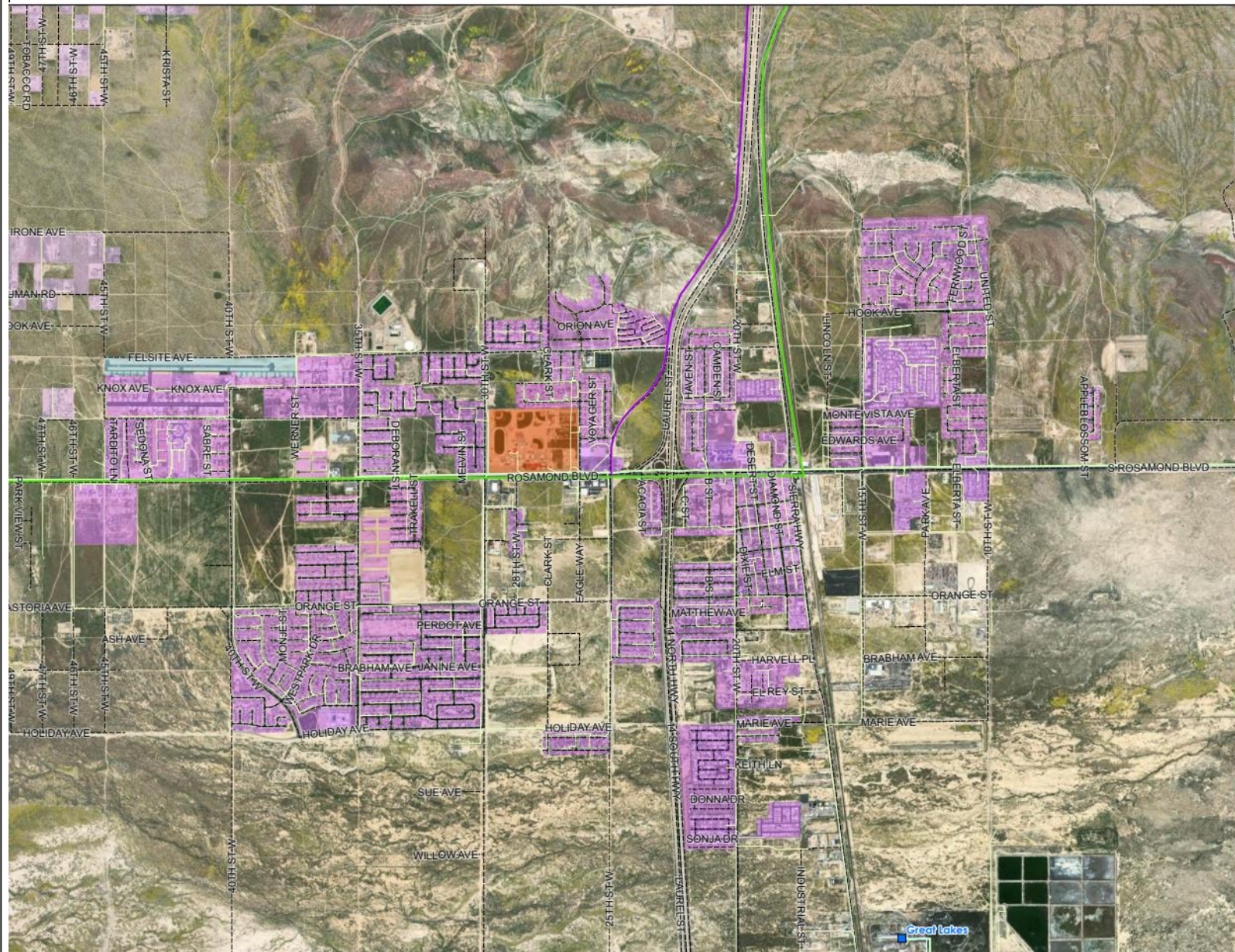
PROJECT
WILLOW ROCK ENERGY STORAGE CENTER SUPPLEMENTAL AFC

TITLE
PREFERRED AND ALTERNATIVE ROUTES

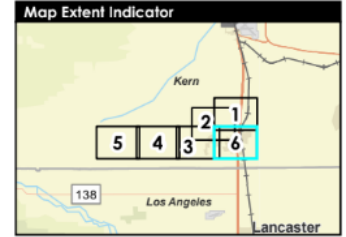
CONSULTANT	YYYY-MM-DD	2024-05-20
DESIGNED	KAS	
PREPARED	KAS	
REVIEWED	JP	
APPROVED	VG/L	

PROJECT NO. 31406639.003 CONTROL 01 REV 1 FIGURE 6-2.3

\\P014-GIS\Hydro\Avalon\99_PROJECTS\31406639_003_AltRoutes\Avalon_6_AltRoutes\TLine 246_Route Maps_5-15-24_Templates.aprx PRINTED: 5/20/2024 at 4:15 PM BY: KShenave



- Project Boundary
- WRESC Site
- Other Project Parcel
- Preferred Route Primary
 - Aboveground
 - Underground
- Preferred Route Options
 - Aboveground
 - Underground
- Alternative Routes
 - Alternative A
 - Alternative B
 - Alternative C
- Existing Transmission
 - Existing Substations
 - Existing Transmission Lines (CEC 2023)
 - Existing Subtransmission Lines (SCE 2023)
 - Existing Primary Distribution Lines (SCE 2023)
- General Land Use Classifications
 - Residential (Low-Moderate Density)
 - Residential (Moderate-High Density)
 - School
 - Airport
 - Gold Mine
 - Race Park
 - Solar Development
 - Adjacent Wind Turbines
 - Mountain Peak



REFERENCE(S)
1. PREFERRED AND ALTERNATIVE ROUTES - PANORAMA, 2023
2. COORDINATE SYSTEM: NAD 1983 STATEPLANE CALIFORNIA V FIPS 0405 FEET
3. MAP SERVICE LAYER CREDITS: SOURCES: ESRI, HERE, GARMIN, INTERMAP, INCREMENT P, SORP, GEBCO, USGS, FAO, NPS, NRCAN, GEOBASE, IGN, KADASTER NL, ORDANCE SURVEY, ESRI JAPAN, METI, EASRI CHINE (HONG KONG), (C) OPENSTREET MAP CONTRIBUTORS, AND THE GIS USER COMMUNITY

CLIENT
GEM A-CAES LLC

PROJECT
WILLOW ROCK ENERGY STORAGE CENTER SUPPLEMENTAL AFC

TITLE
PREFERRED AND ALTERNATIVE ROUTES

CONSULTANT	YYYY-MM-DD	2024-05-20
DESIGNED	KAS	
PREPARED	KAS	
REVIEWED	JP	
APPROVED	VG/L	