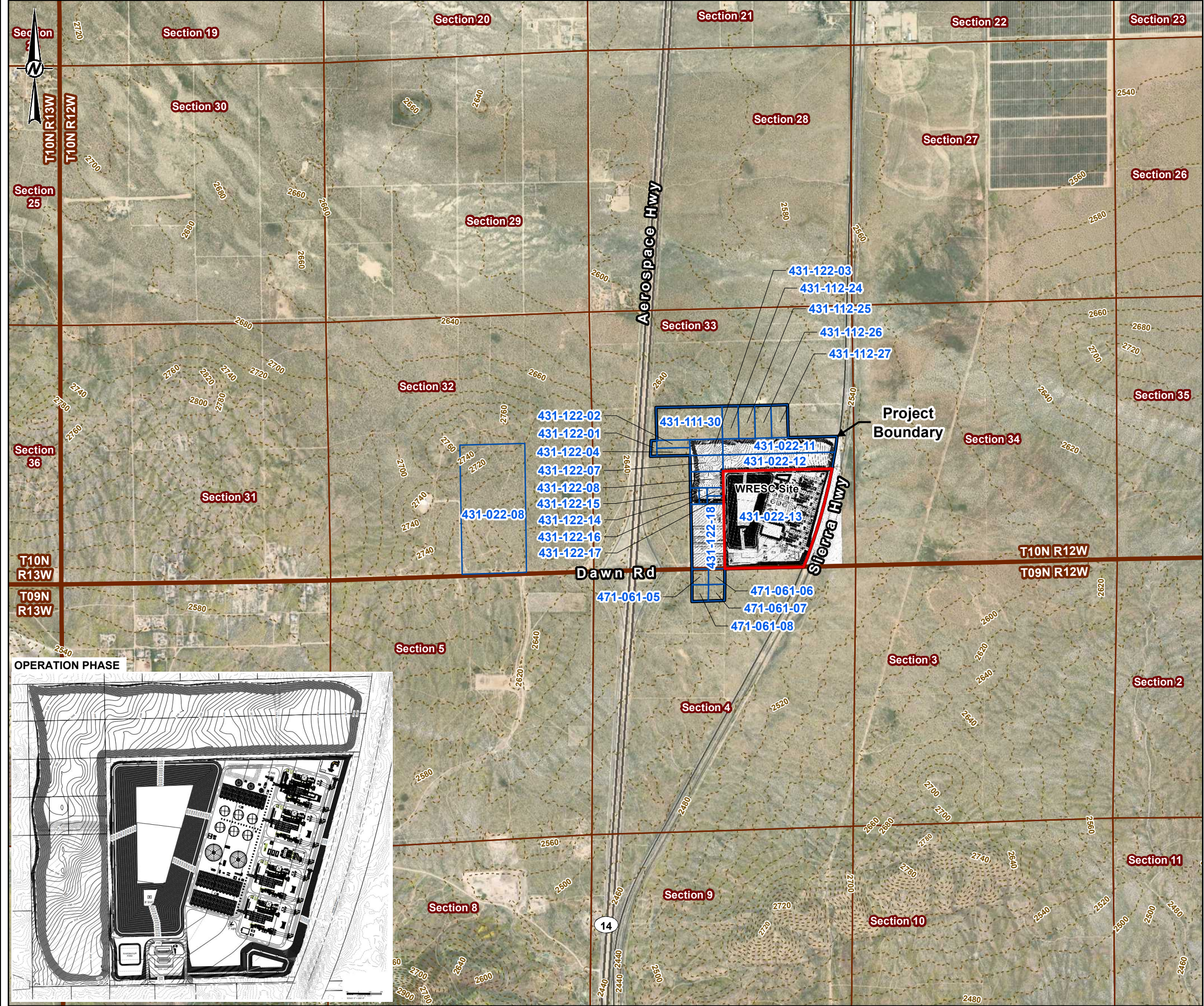


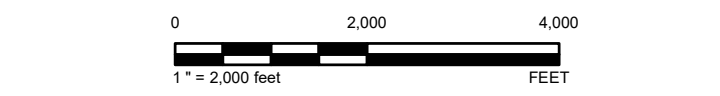
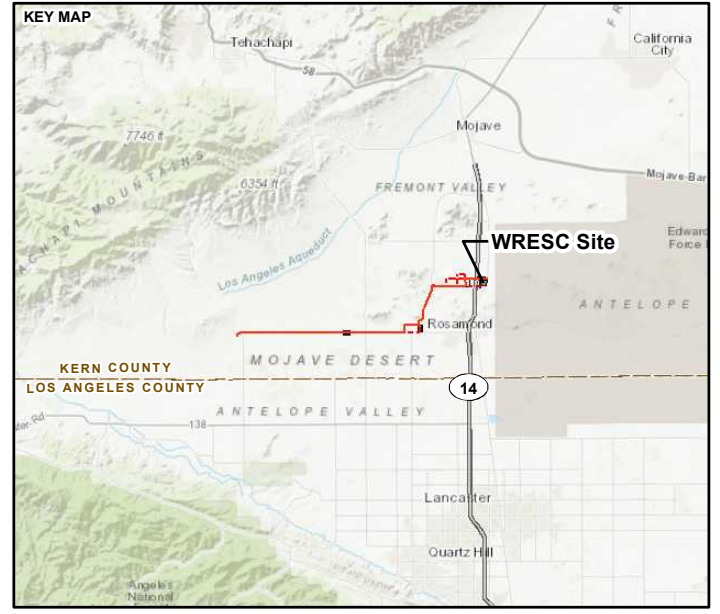
**DOCKETED**

<b>Docket Number:</b>	21-AFC-02
<b>Project Title:</b>	Willow Rock Energy Storage Center
<b>TN #:</b>	265069
<b>Document Title:</b>	Willow Rock Data Adequacy Response, Attachment PD-1
<b>Description:</b>	Resubmission of files previously submitted through Kiteworks
<b>Filer:</b>	Kathryn Stevens
<b>Organization:</b>	WSP USA Inc.
<b>Submitter Role:</b>	Applicant Consultant
<b>Submission Date:</b>	7/29/2025 2:17:24 PM
<b>Docketed Date:</b>	7/29/2025



**LEGEND**

- WRES Site
- Other Project Parcel
- Project Boundary
- PLSS Township and Range
- PLSS Section



- REFERENCE(S)**
1. WRES SITE RENDERING - KIEWIT 2024
  2. PLSS - CALIFORNIA STATE GEOPORTAL PLSS DB, 2023
  3. PARCEL BOUNDARIES - KERN COUNTY, 2023
  4. COORDINATE SYSTEM: NAD 1983 STATE PLANE CALIFORNIA V FIPS 0405 FEET
  5. MAP SERVICE LAYER CREDITS: SOURCES: ESRI, HERE, GARMIN, INTERMAP, INCREMENT P CORP, GEBCO, USGS, FAO, NPS, NRCAN, GEOBASE, IGN, KADASTER NL, ORDNANCE SURVEY, ESRI JAPAN, METI, ESRI CHINA (HONG KONG), (C) OPENSTREETMAP CONTRIBUTORS, AND THE GIS USER COMMUNITY SOURCE: ESRI, MAXAR, EARTHSTAR GEOGRAPHICS, AND THE GIS USER COMMUNITY

**CLIENT**  
GEM A-CAES LLC

**PROJECT**  
WILLOW ROCK ENERGY STORAGE CENTER  
SUPPLEMENTAL AFC

**TITLE**  
PROJECT LOCATION MAP OF WILLOW ROCK ENERGY STORAGE CENTER WITH ARCHITECTURAL BERM (CONSTRUCTION PHASE)

CONSULTANT		DATE
		YYYY-MM-DD 2024-05-17
		DESIGNED MK
		PREPARED MK
		REVIEWED SCH
		APPROVED VG/LL

PROJECT NO.	CONTROL	REV.	FIGURE
31406639.003	01	1	1-4

PATH: G:\Hydro\Armed\003\_PROD\ECT031406639\_003\_HydroArea\Section102\_PROD\DUCTION\XREF\FIGURES\Section\_102\_Rev1\31406639\_003\_01\_0103\_F-4\_Rev1\_ProjectLocation\_WRESStorage.sld.mxd PRINTED ON: 2024-05-17 AT 5:42:17 PM

1in IF THIS MEASUREMENT DOES NOT MATCH WHAT IS SHOWN, THE SHEET SIZE HAS BEEN MODIFIED FROM ANSI B

