

**DOCKETED**

<b>Docket Number:</b>	16-OIR-06
<b>Project Title:</b>	Senate Bill 350 Disadvantaged Community Advisory Group
<b>TN #:</b>	264208
<b>Document Title:</b>	20250613 - Item 6 – CEC Presentation on Opt-In
<b>Description:</b>	N/A
<b>Filer:</b>	Dorothy Murimi
<b>Organization:</b>	California Energy Commission
<b>Submitter Role:</b>	Commission Staff
<b>Submission Date:</b>	6/12/2025 8:22:22 AM
<b>Docketed Date:</b>	6/12/2025



# Update on the Opt-In Certification Program

Siting, Transmission, and Environmental Protection Division

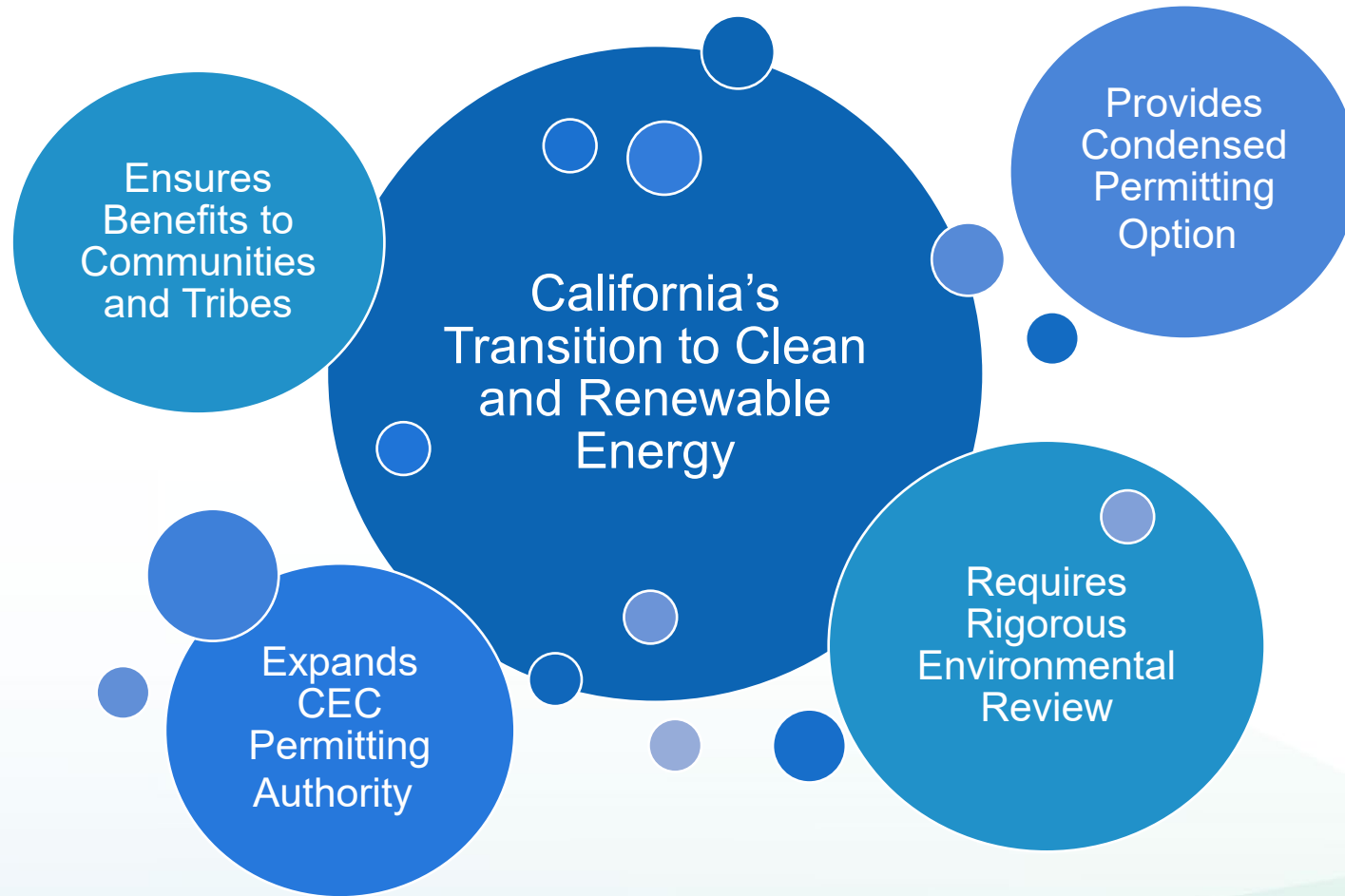
June 13, 2025



# Opt-In Certification Program



# Opt-In Certification Intent





# Opt-In Certification Program Eligible Projects



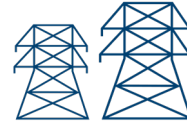
Solar photovoltaic or terrestrial wind electrical generating power plants 50 megawatts (MW) or greater



Energy storage systems capable of storing 200 megawatt-hours (MWh) or more



Stationary power plants using any source of thermal energy, excluding fossil or nuclear fuels, 50 MW or greater



Certain transmission lines associated with these generating and storage facilities



Specified facilities that manufacture or assemble clean energy or storage technologies or related components



Hydrogen production facilities (not derived from fossil fuel feedstock) and associated onsite storage and processing facilities





# Agency Coordination



*Source: CDFW*



*Source: State Water Board*



*Source: DTSC*



# Opt-In Process Outline

## Pre-Filing Meeting

- 30 Days Prior to Filing Application
- Project Docket Established
- Fees Submitted with Application

## Data Completeness Review

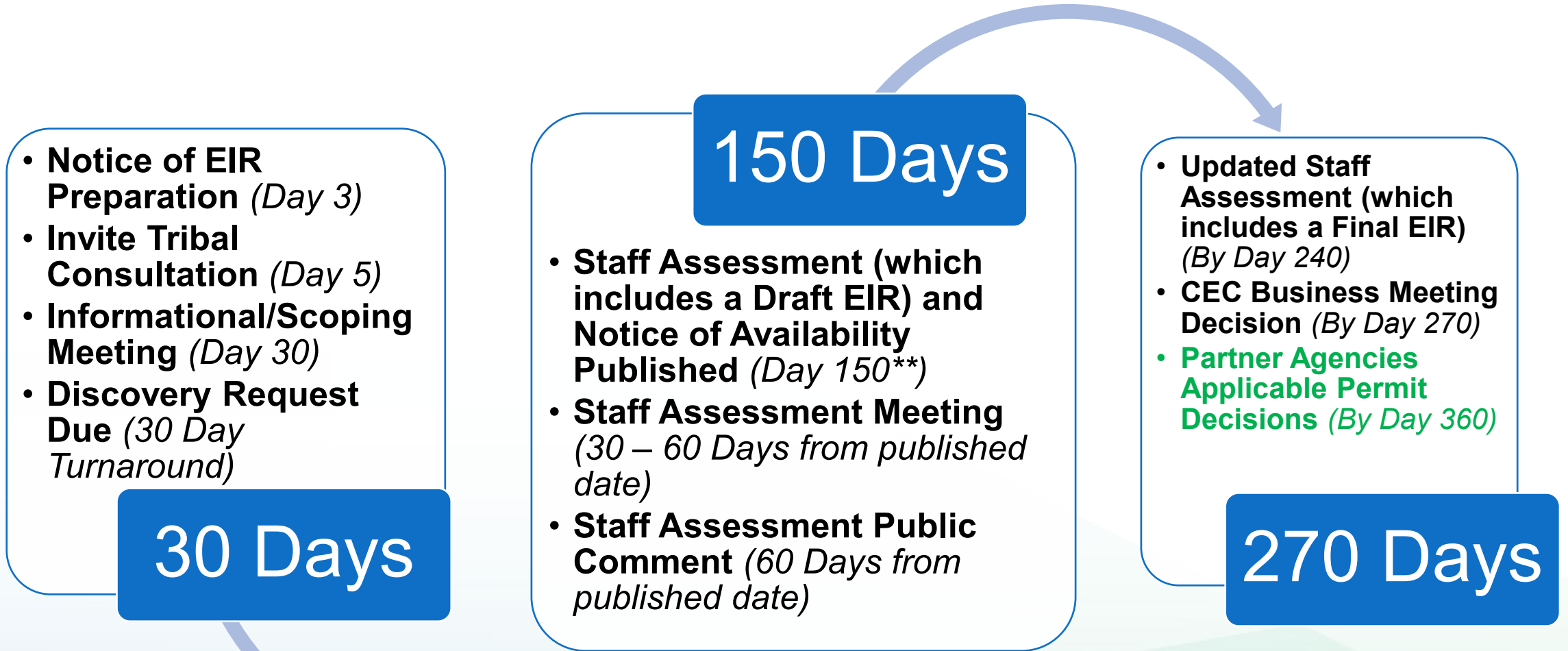
- 30 Days to Conduct Application Completeness Review
- Additional Data and Information Can Be Requested
- Notice and Application Shared with Local Government, Other Public Agencies, and Tribes
- Deem Application Complete

## Environmental Review

- 270 Days to Conduct Environmental Review and Bring Staff Recommendation to a CEC Business Meeting



# 270 Day Process Milestones

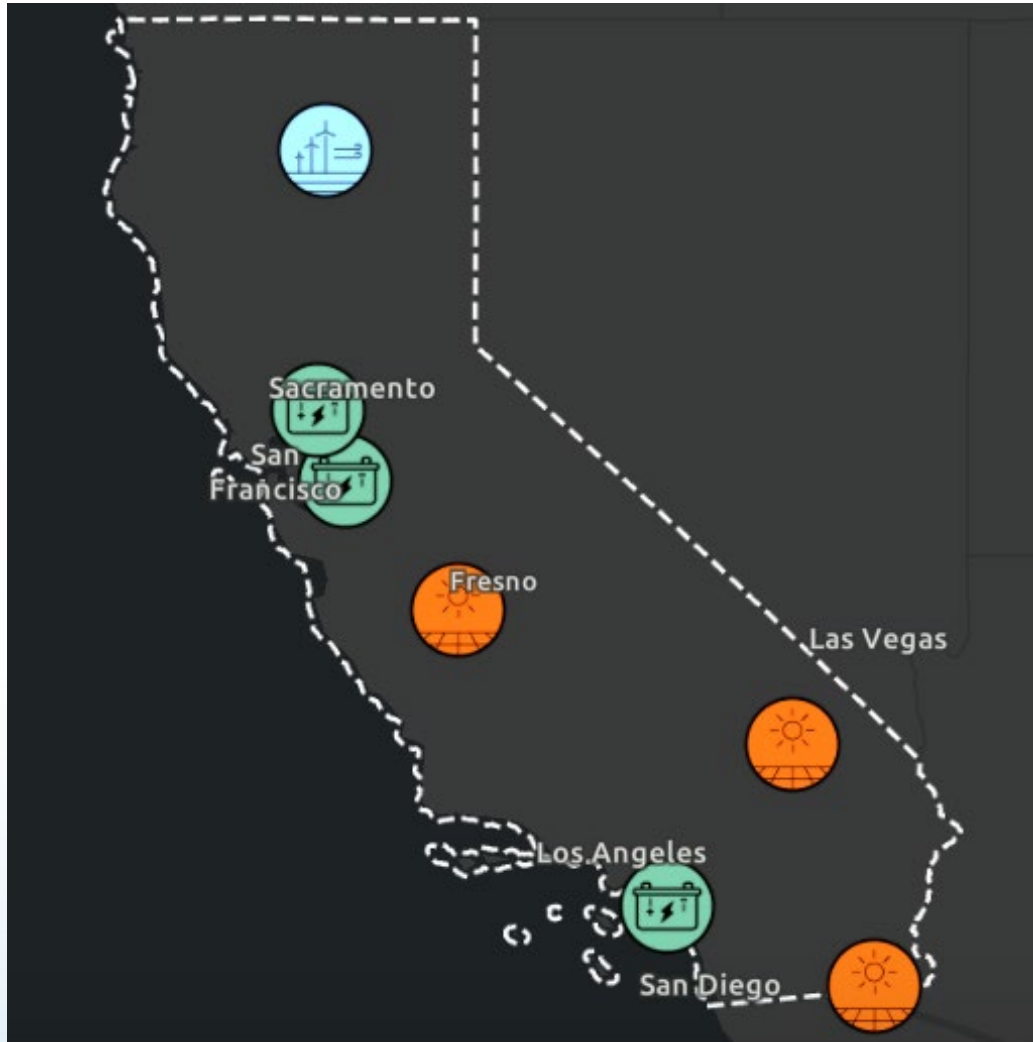


\*\*These Deadlines are subject to any substantial changes made to the project or certain other events occurring after an application is deemed complete.





# Applications Overview



8

total submitted applications

3

complete  
applications

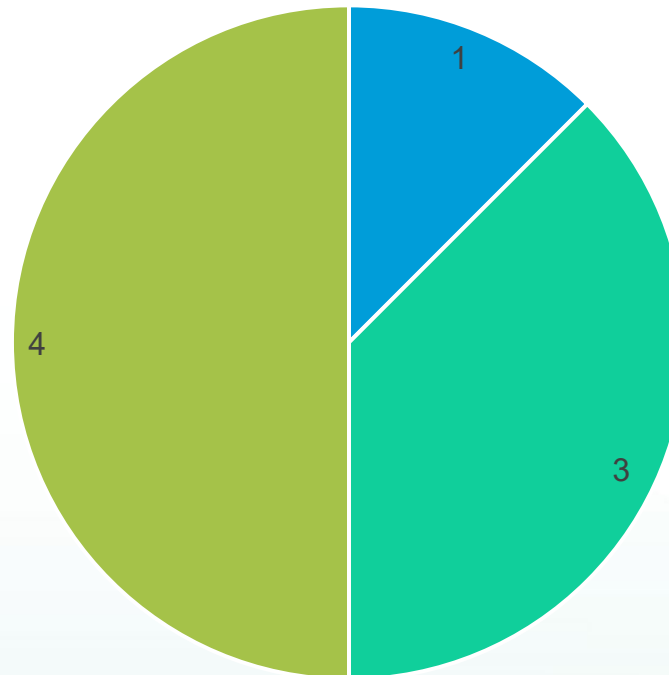
5

incomplete  
applications



# Facility Types

Facility Types

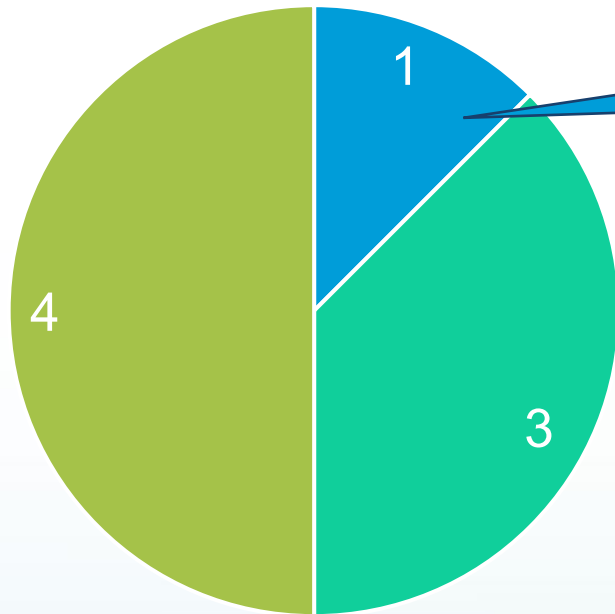


■ Wind ■ Solar PV + Storage ■ Storage



# Projects by Type: Wind

Facility Types



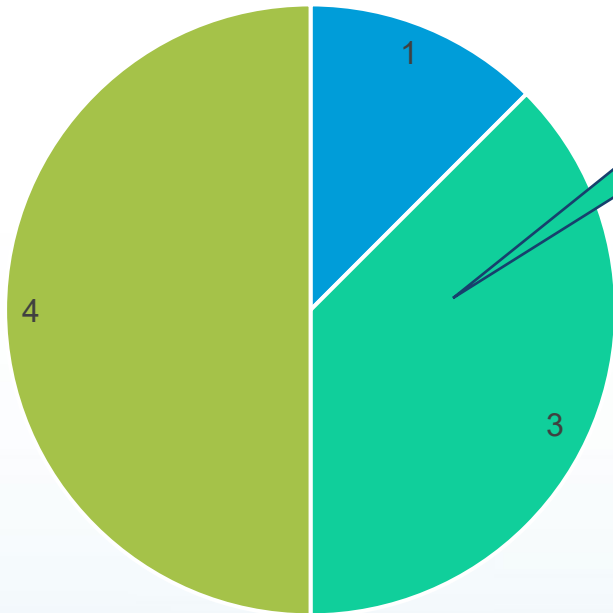
■ Wind ■ Solar PV + Storage ■ Storage

**Project Name:** Fountain Wind Project  
**Location:** Shasta County  
**Capacity:** 205 MW generating  
**Application Complete:** Yes  
**Status:** Staff preparing Updated Staff Assessment



# Projects by Type: Solar PV + Storage

Facility Types



■ Wind ■ Solar PV + Storage ■ Storage

**Project Name:** Darden Clean Energy Project  
**Location:** Fresno County  
**Capacity:** 1,150 MW generating, 1,150 MW storage  
**Application Complete:** Yes  
**Status:** Approved at June 11 Business Meeting

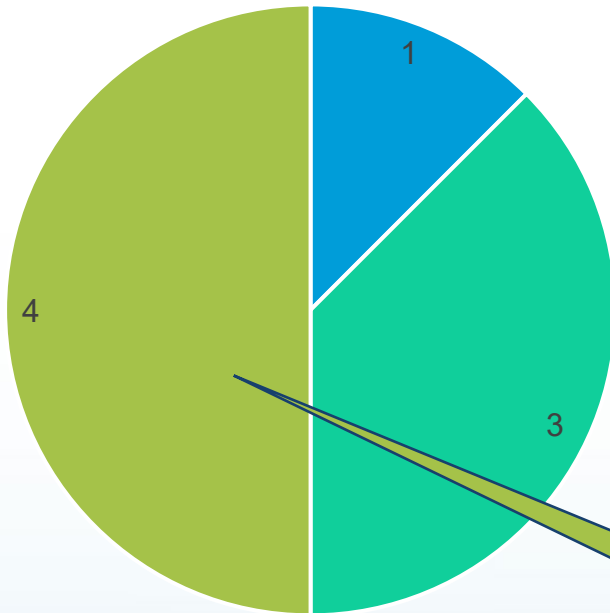
**Project Name:** Perkins Renewable Energy Project  
**Location:** Imperial County  
**Capacity:** 1,150 MW generating, 1,150 MW storage  
**Application Complete:** No

**Project Name:** Soda Mountain Solar Project  
**Location:** San Bernardino County  
**Capacity:** 300 MW generating, 300 MW storage  
**Application Complete:** No



# Projects by Type: Storage

Facility Types



■ Wind ■ Solar PV + Storage ■ Storage

**Project Name:** Compass Energy Storage Project

**Location:** Orange County

**Capacity:** 250 MW storage

**Application Complete:** Yes

**Status:** Staff preparing Staff Assessment

**Project Name:** Potentia-Viridi Battery Energy Storage System

**Location:** Alameda County

**Capacity:** 400 MW storage

**Application Complete:** No

**Project Name:** Corby Battery Energy Storage System Project

**Location:** Solano County

**Capacity:** 300 MW storage

**Application Complete:** No

**Project Name:** Viracocha Hill Battery Energy Storage System Project

**Location:** Alameda County

**Capacity:** 90.7 MW storage

**Application Complete:** No





# Environmental and Engineering Impact Assessment

Environmental Evaluation	Environmental Evaluation	Engineering Evaluation
Air Quality	Land Use and Agriculture	Facility Design
Biological Resources	Noise and Vibration	Facility Reliability
Climate Change and Greenhouse Gas Emissions	Public Health	Transmission System Engineering
Cultural and Tribal Cultural Resources	Socioeconomics	Worker Safety and Fire Protection
Efficiency and Energy Resources	Solid Waste Management	
Geology, Paleontology, and Minerals	Transmission Line Safety and Nuisance	
Hazards, Hazardous Materials/Waste, and Wildfire	Transportation	
	Visual Resources	
	Water Resources	
	Alternatives	



# CEC Findings Required to Approve Opt-In Projects

Provides an overall net positive economic benefit to the local government

Signed a community benefits agreement

Commits to paying prevailing wage to skilled and trained workforce

Complies with applicable laws, ordinances, regulations, and standards or is required for public convenience or necessity

Significant effects of the project will be avoided or mitigated, or statement of overriding considerations for significant effects found infeasible to avoid or mitigate



# Community Benefits Agreements

## Mandatory Opt-In Requirement

Enter into one or more legally binding and enforceable agreements with, or that benefit, a coalition of one or more community-based organizations

Before  
application is  
deemed  
complete

- Plan or strategy, including a timeline for execution, to obtain community benefit agreement(s)

After application  
is deemed  
complete

- Within 45 days of being deemed complete, signed community benefits agreement(s)



# Darden Clean Energy Project

## Opt-In Community Benefits Requirements Met



**CENTRO LA FAMILIA**  
ADVOCACY SERVICES  
NEIGHBORHOOD RESOURCE CENTER

### About Centro La Familia Advocacy Services

- California 501(c)(3) non-profit organization
- Located in Fresno, California

### Applicant Funding

- Support wide-ranging programs to assist crime victims, promote family wellness, and encourage civic engagement in rural communities



# Risk Assessment and Management

**Identify potential hazards**

**Assess probability and impacts**

**Recommend measures to mitigate risks/impacts**





# CEC Safety Evaluations

CEC will be evaluating projects against these latest BESS safety standards





# More Information

---

## [Power Plant Licensing](https://www.energy.ca.gov/programs-and-topics/topics/power-plants/power-plant-licensing)

<https://www.energy.ca.gov/programs-and-topics/topics/power-plants/power-plant-licensing>

## [Opt-In Certification Program](https://www.energy.ca.gov/programs-and-topics/topics/power-plants/opt-certification-program)

<https://www.energy.ca.gov/programs-and-topics/topics/power-plants/opt-certification-program>



# Thank You!